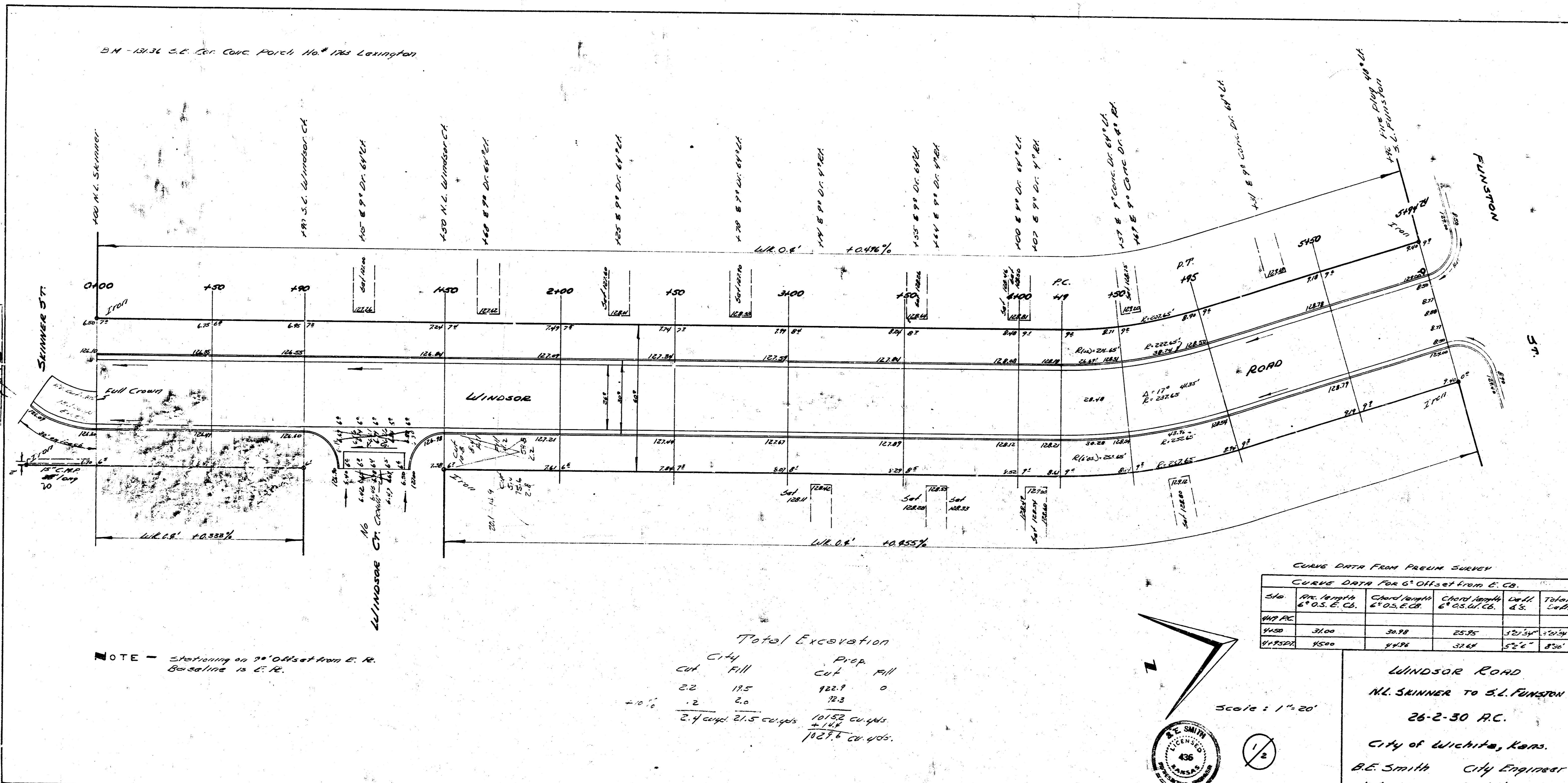


B.M. - 121.36 S.E. Cor. Conc. Patch No. 1784 Lexington



Survey Stationed on B.M. 1717
at 100' offset from
centerline
of
road

NOTE - Stationing on 7' Offset from E. R. Baseline is C.R.

Total Excavation

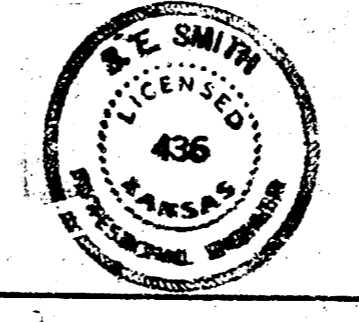
City		Prop.	
Cut	Fill	Cut	Fill
2.2	17.5	92.7	0
2	2.0	72.3	
2.4 cu yds 21.5 cu yds		165.0 cu yds	
		+1.1	
		162.7 cu yds.	

CURVE DATA FROM PRELIM SURVEY

Sta	Pre. Station at O.S.E. C.	Chord Length at O.S.E. C.	Chord Length at C.S.O. C.	Dist at C.	Total Curve
1400	31.00	30.98	25.95	120.34	100.34
1415.50	15.00	14.98	11.67	57.67	47.67



Scale: 1" = 20'



WINDSOR ROAD
N.E. SKINNER TO S.E. FINSTON
26-2-30 P.C.
City of Wichita, Kans.
B.E. Smith City Engineer
July 1953 Proj. No. C18-17

1745 69