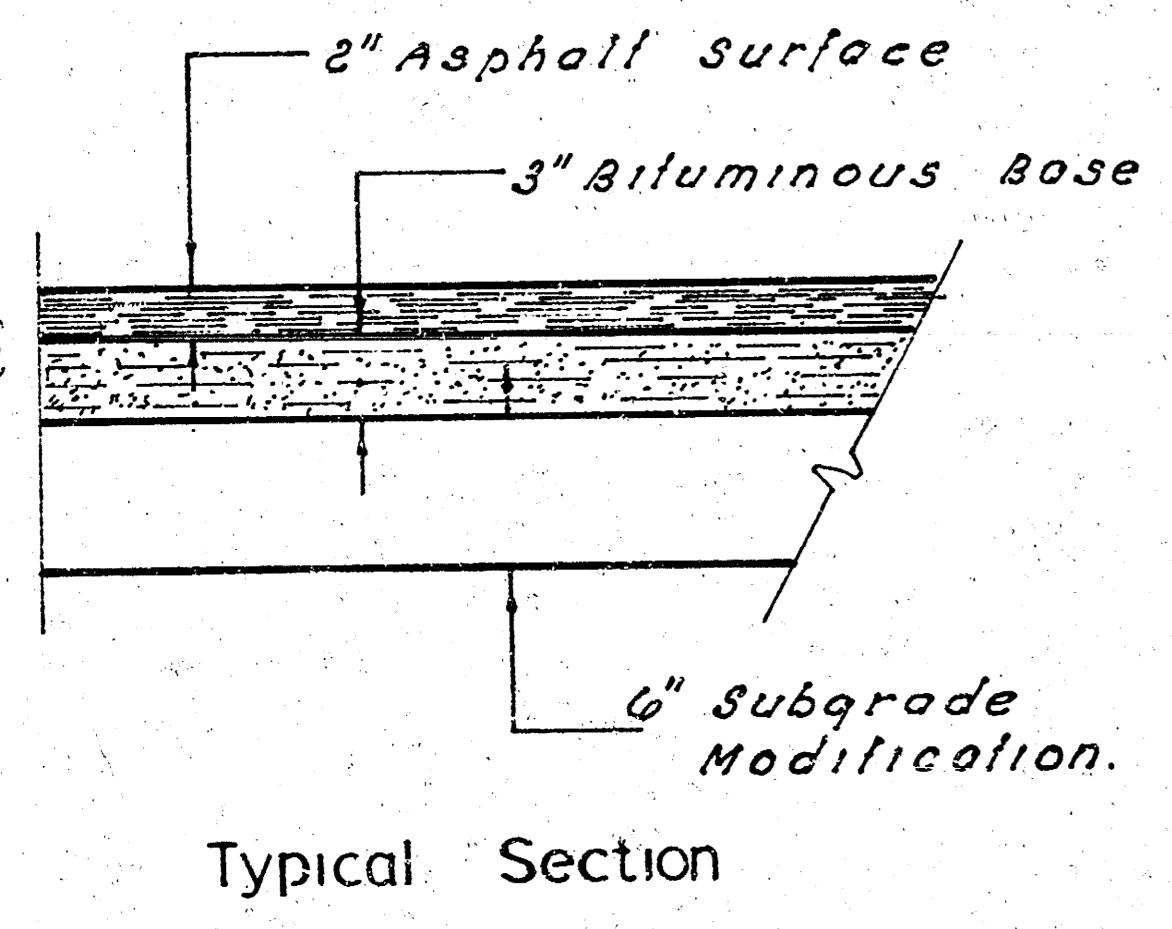
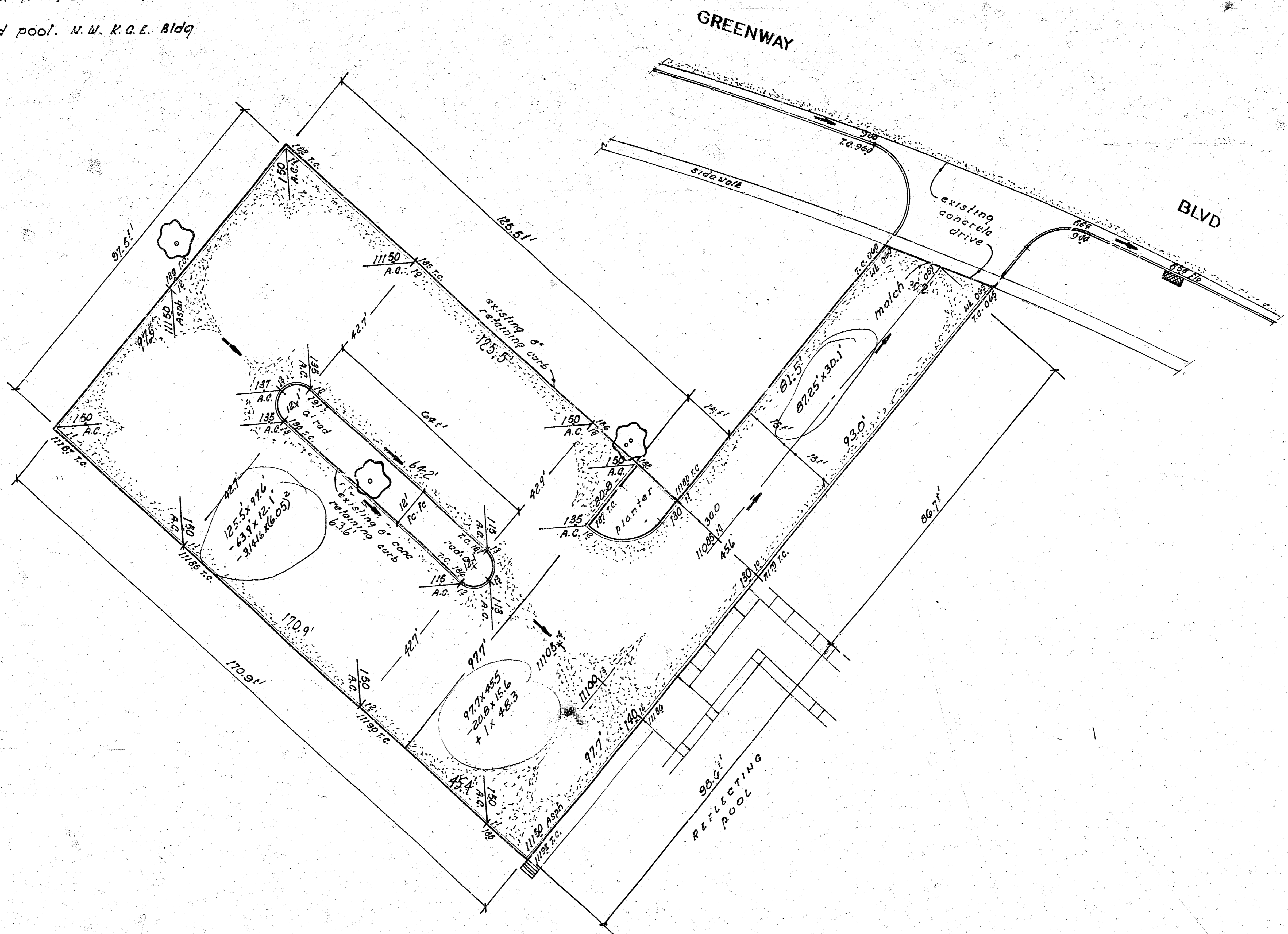


B.M. 11842 "D" on S.E. Cor wingwall on S.E. Cor Little River Bridge of N.M.S.  
 300ft N. of GREENWAY BLVD.  
 B.M. 11336 R.R. Spike N.E. side large walnut tree, 60' N.E. of N.E. Cor  
 R.G.E. Bldg.  
 B.M. 11316 Top N.E. Cor conc wall around pool. N.W. K.G.E. Bldg  
 on GREENWAY BLVD.

**CAUTION**  
 UNDEGROUND  
 UTILITIES  
 SEE PLAN FOR LOCATION  
 Kansas City, Mo. Co. for Location

N  
 Scale 1"=20'

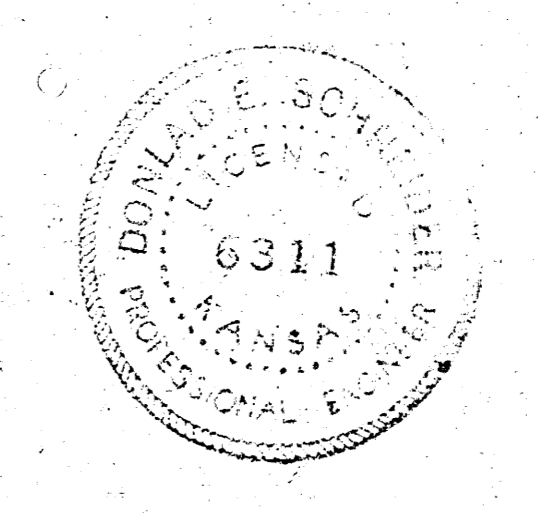


NOTE: Standard compacted fill or sub-grade treatment to be determined by the field engineer.

"EXCAVATION" 199.6 cu yds  
~~195.3~~ 19.5  
 110% 19.5  
 214.8 cu yds

NOTE TO CONTRACTOR: use minimum tolerance when constructing flow line grades, to insure proper drainage to the street.

Contractor to use EXTREME CAUTION when performing work adjacent to existing curb to prevent damage. Any curb damage as a result of contractors operations shall be repaired by contractor at his own expense.



REFLECTING POOL PARKING LOT  
 CENTRAL and GREENWAY BLVD  
 CITY of WICHITA, KANSAS  
 R.W. LINN CITY ENGINEER  
 Date DEC. 1972 Proj No. D&KB.500007

1/2