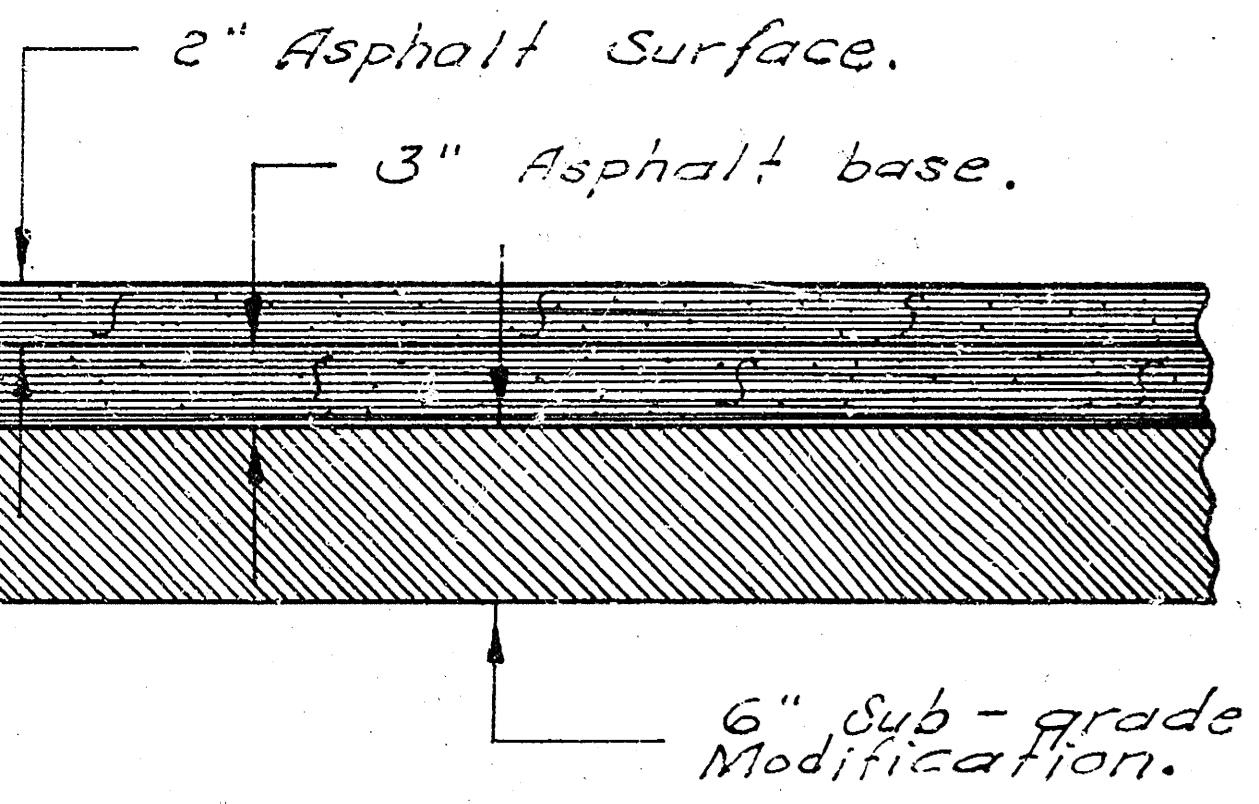


1. 115.31 "B" in Ball ctr. of wk. No. @ N.W. cor. 9th & Piatt.  
 2. 115.69 1/2" a Spike N. side Power Pole @ NW cor. 9th & Minnesota.

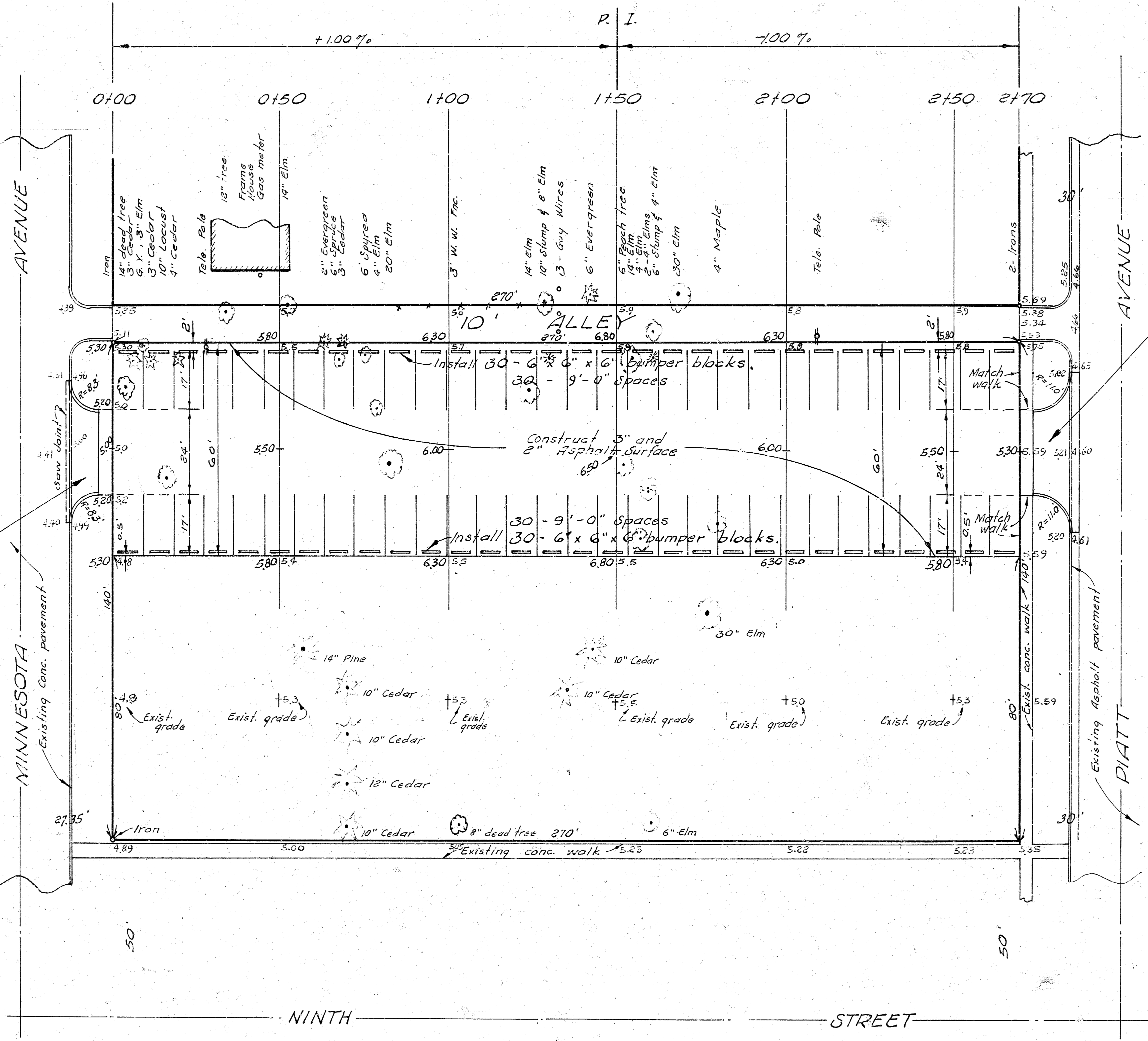


TYPICAL SECTION

NOTE: Remove curb. Const. Conc. drive to elevation shown.

NOTE TO CONTRACTOR

This project will be constructed under the supervision of the CITY ENGINEER and conforming to the SPECIFICATIONS of the CITY OF WICHITA. The CONTRACTOR will reimburse the City of Wichita for all cost of Engineering, Plans, and Inspection.



NOTE TO CONTRACTOR  
 This project will be constructed under the supervision of the CITY ENGINEER and conforming to the SPECIFICATIONS of the CITY OF WICHITA. The CONTRACTOR will reimburse the City of Wichita for all cost of Engineering, Plans, and Inspection.

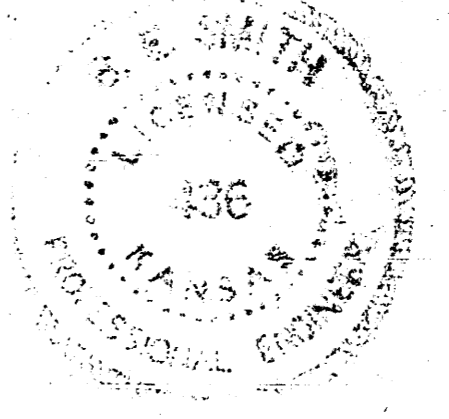
NOTE: Remove curb, gutter and sidewalk. Const. conc. drive to elevation shown.

GENERAL NOTES

- Contractor required to clear Right-of-Way as necessary.
- Contractor to excavate and or compact fill.
- Sub-grade modification to be used as per City Engineering Specifications. Triox Weed Killer (or equal) is to be applied to sub-grade using the ratio of one gallon of weed killer to ten gallons of water at the rate of one gallon per ten sq. yards coverage.
- 5" asphaltic concrete pavement. (3" asphalt base, 2" asphalt surface)
- Concrete bumper blocks (6' long) to be installed as shown on plan. Anchor with steel dowel bars.
- Contractor to supply paint to meet City of Wichita Traffic Division specifications for striping stalls. Traffic Division to do the striping of lot.

The following Bill of Materials, are estimated quantities only. The Contractor shall have full responsibility for providing all materials necessary as shown on detailed plans, or so stated in related Specifications to complete the project.

BILL OF MATERIALS	
1800	Sq. Yds Asphalt Conc base
894	Sq. ft. 6" drive
62	Lin. ft. Separate curb
100	Sq. ft. of walk remove
45	Lin. ft. Comb. cb and gutter Rem.
42	Lin. ft. of saw joint
7	Sq. yds pavement Rem.
185	Cu. yds. of 6" Subgrade modification
78	Cu. yds. excavation
130	Cu. yds. Compacted fill
70	Cu. yds. Estimated Borrow material
60	6'-6"x6" bumper blocks.
Right of Way clearing as required	



PARKING LOT  
 NORTH OF NINTH ST.  
 MINNESOTA AVE. TO PIATT AVE.  
 WICHITA - SEDGWICK COUNTY  
 DEPARTMENT OF COMMUNITY HEALTH  
 MAY 1970