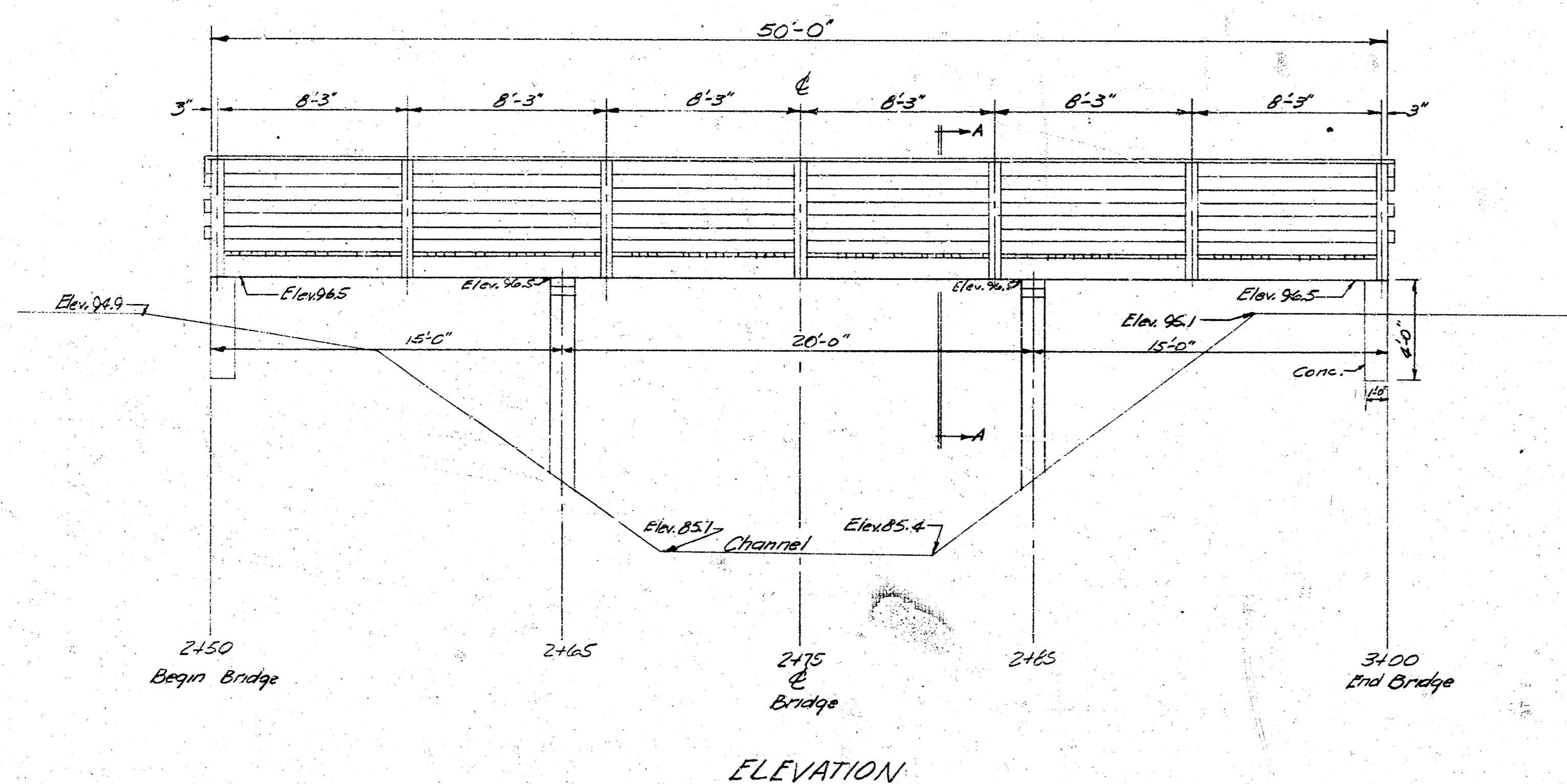
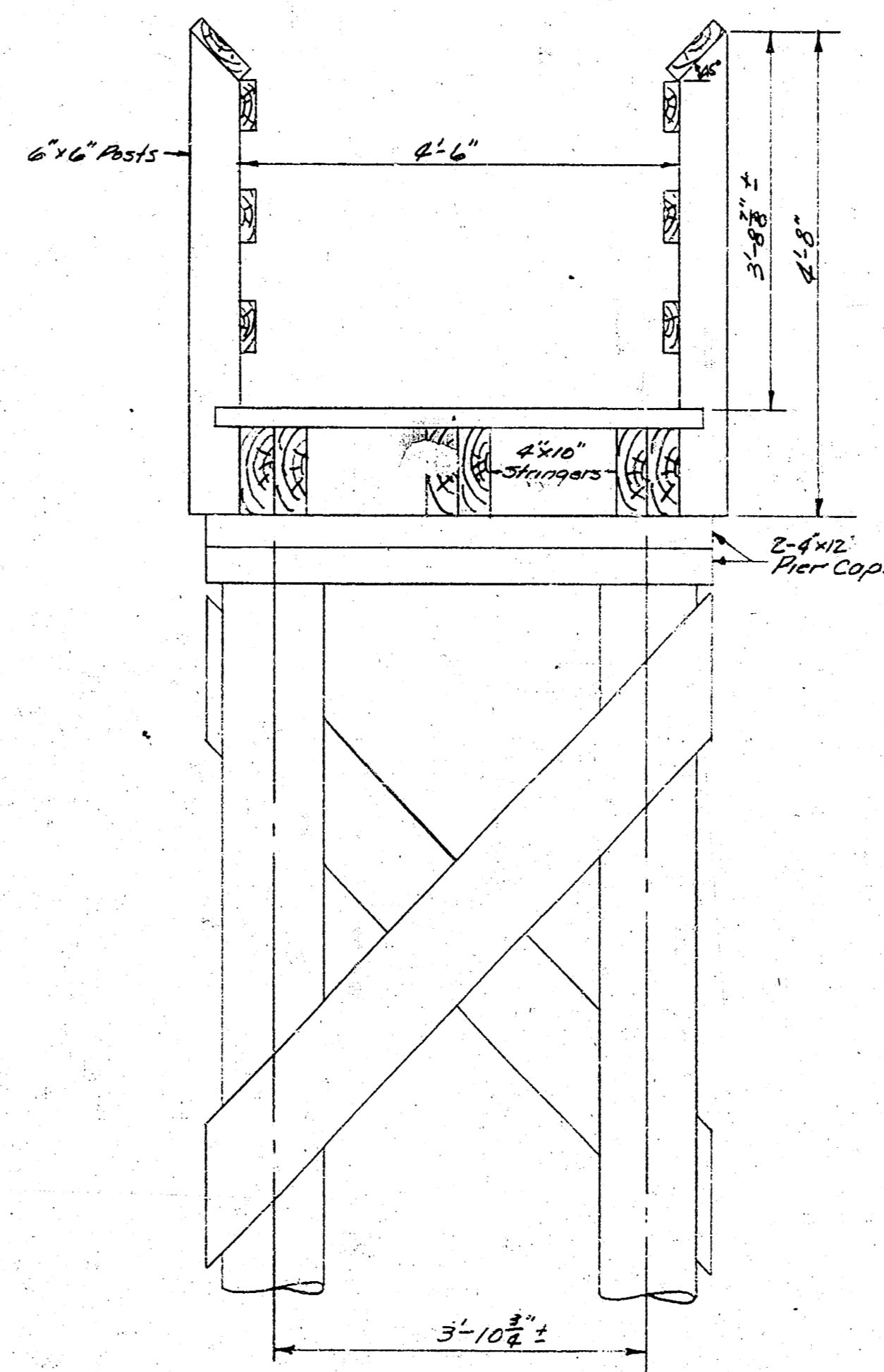


B.M. 98.62 M in Mueller F.R. N.W. Corner Cheyenne and El Rancho Road

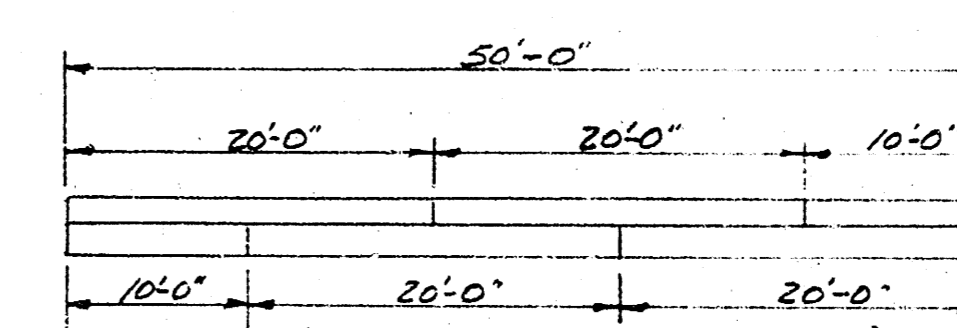
NOTE: Base line 3<sup>d</sup> East of W. Cheyenne  
 0+00 is 5<sup>d</sup> East of Iron N.L. El Rancho Road West



ELEVATION



SECTION A-A



STRINGER SPLICE

FOOT BRIDGE  
 OVER DRYCREEK  
 AT CHEYENNE BLVD.  
 CITY OF WICHITA, KANSAS  
 B.E. SMITH CITY ENGINEER  
 SEPT. 1955

Checked  
 Drawn  
 3/17/55