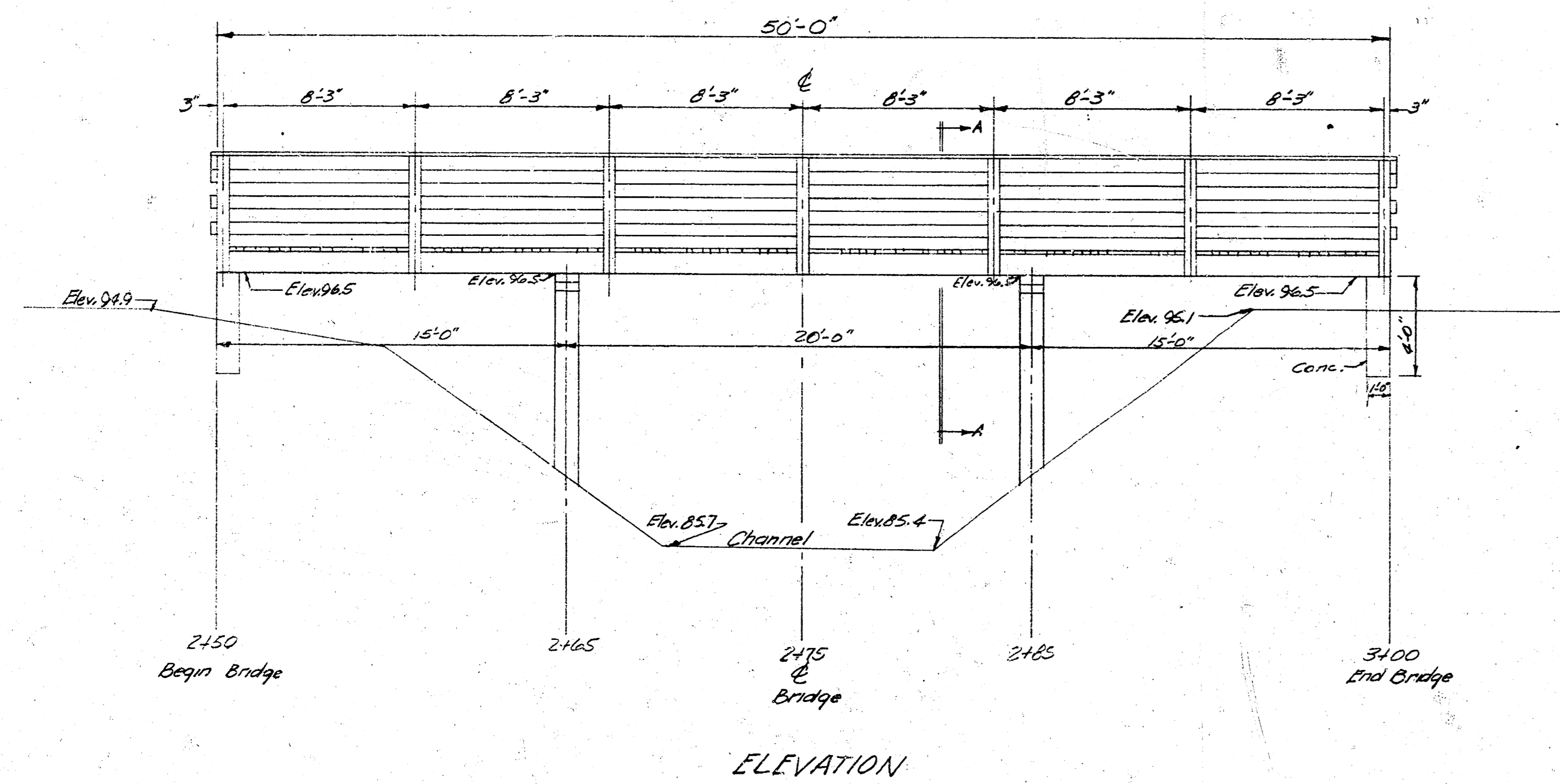
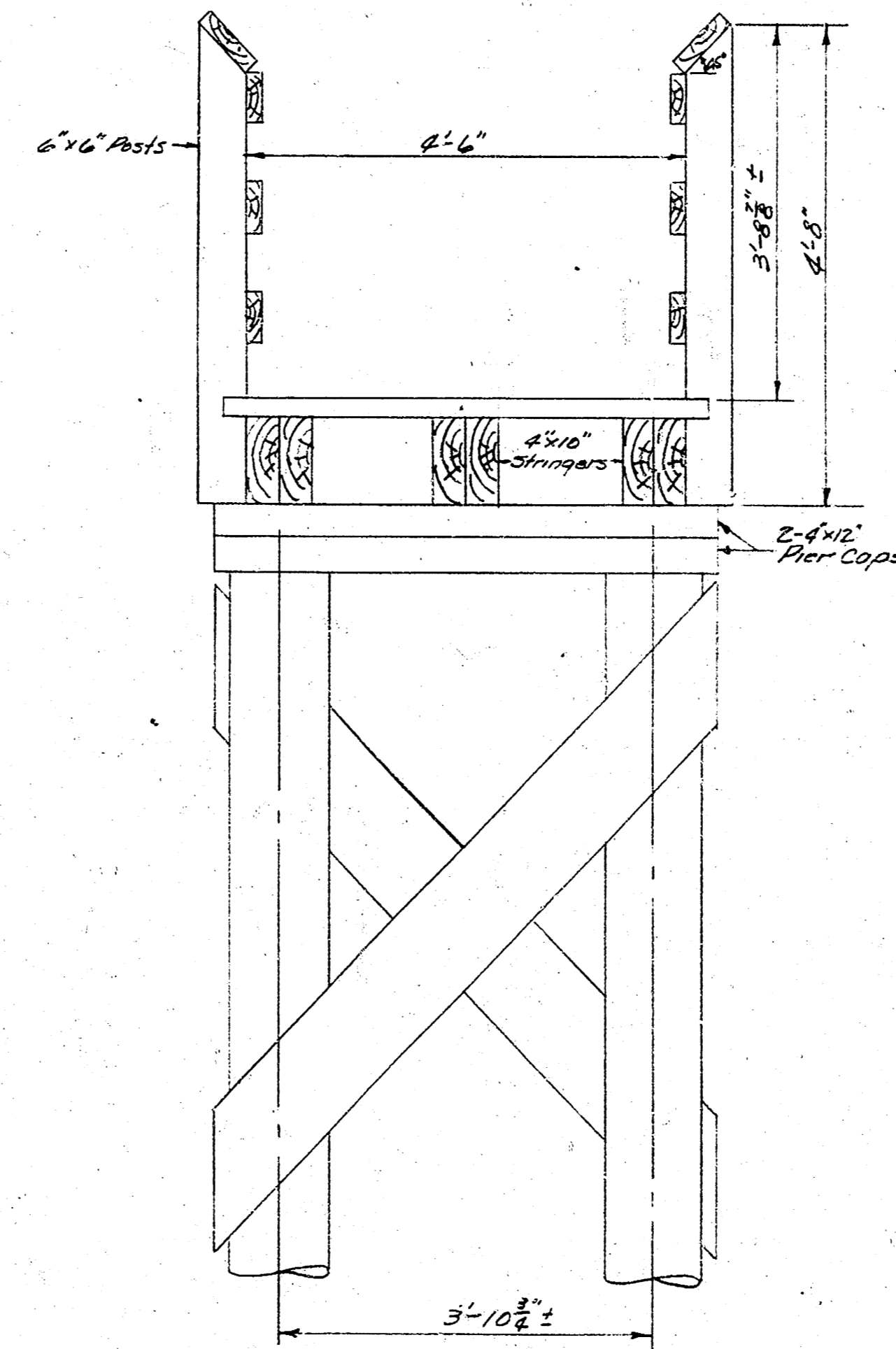


8,198.62 M. Mueller F.R. N.W. Corner Cheyenne and El Rancho Road

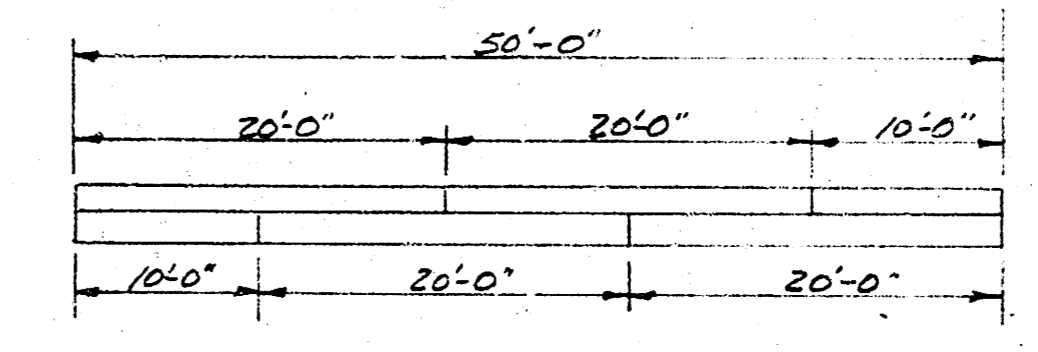
NOTE: Bas. line 3' East of W.L. Cheyenne
 0+00 is 5' East of Iron N.L. El Rancho Road West



ELEVATION



SECTION A-A



STRINGER SPLICE

Checked
 BK 10/16/55

FOOTBRIDGE
 OVER DRYCREEK
 AT CHEYENNE BLVD.
 CITY OF WICHITA, KANSAS
 B.E. SMITH CITY ENGINEER
 SEPT 1955

1 13 1 8