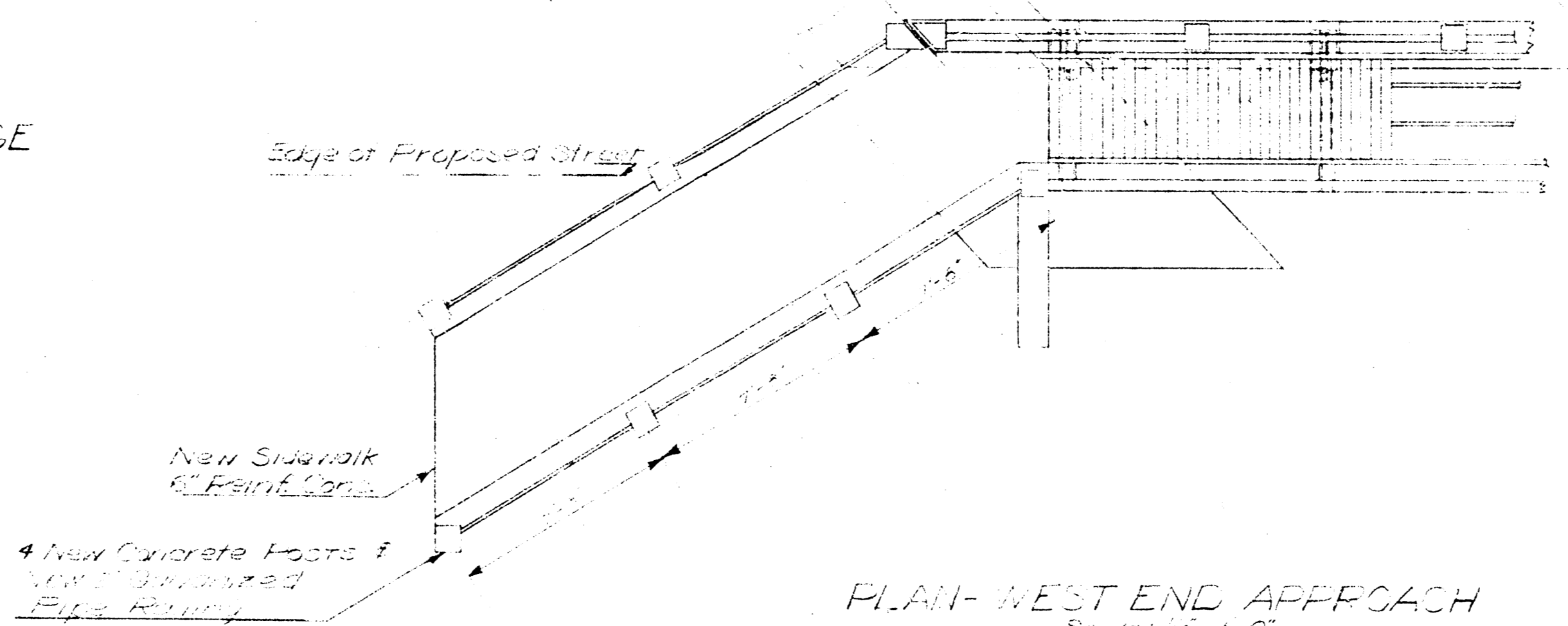
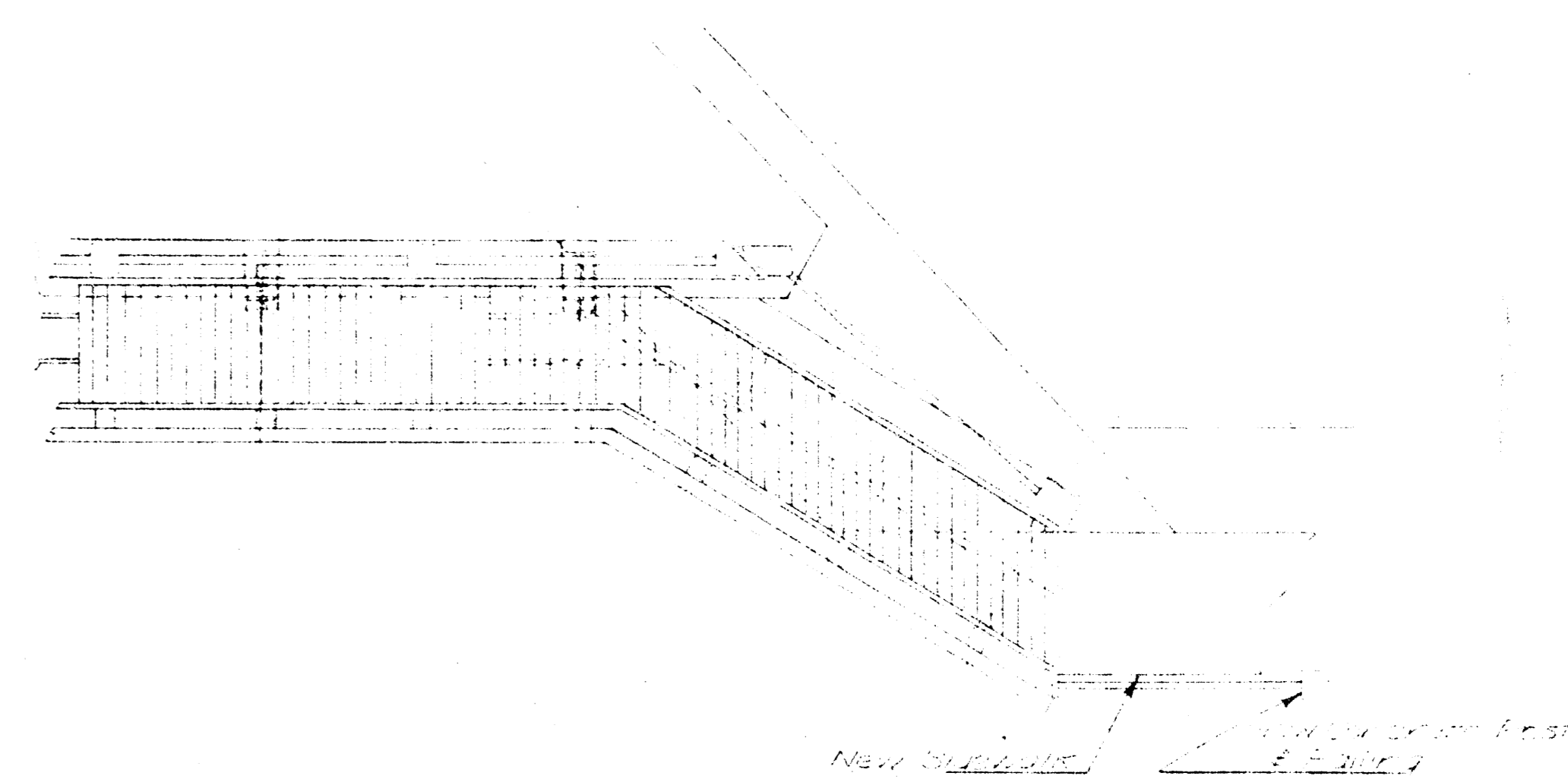


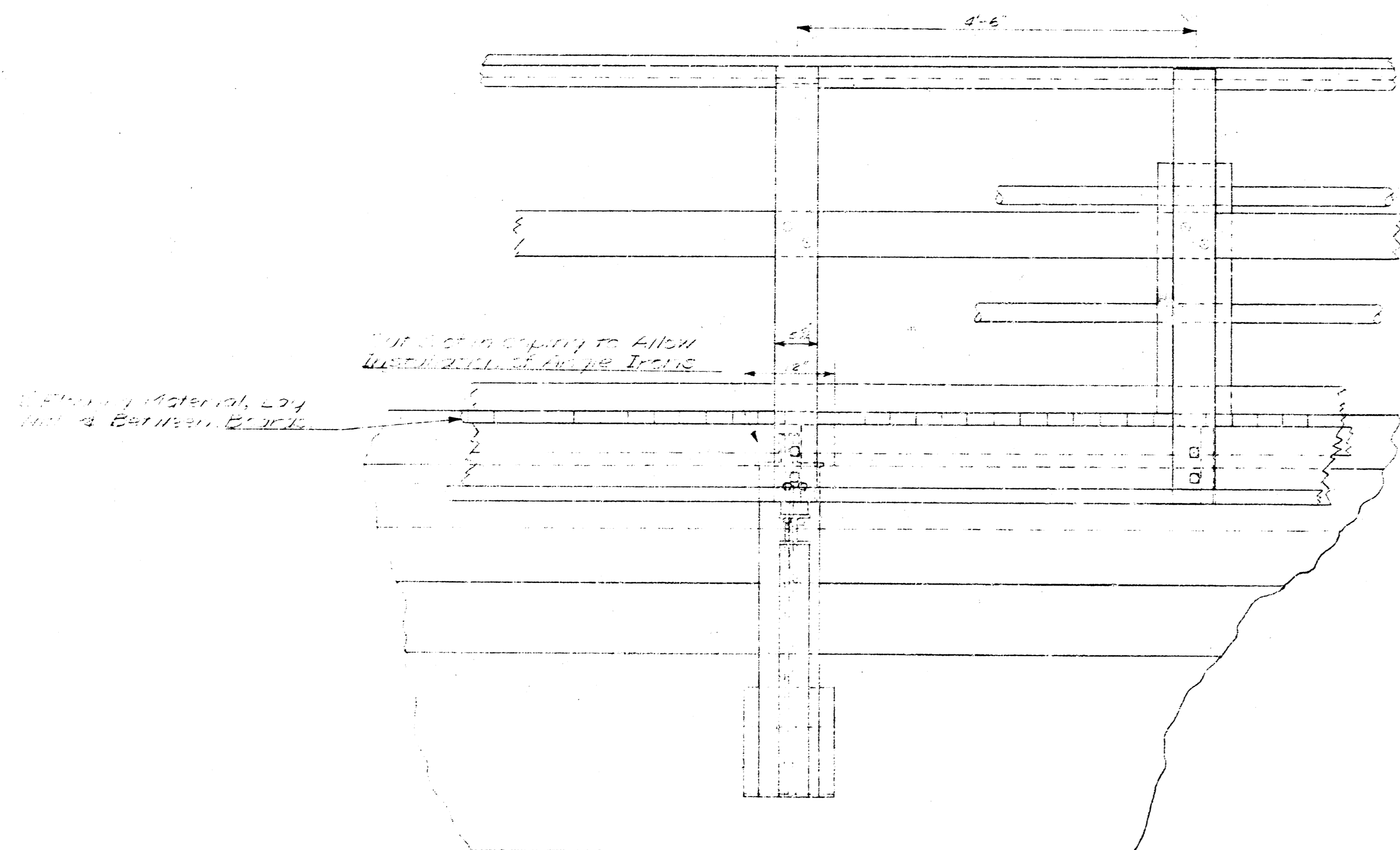
ELEVATION OF FOOTBRIDGE
Scale: 1/4" = 1'-0"



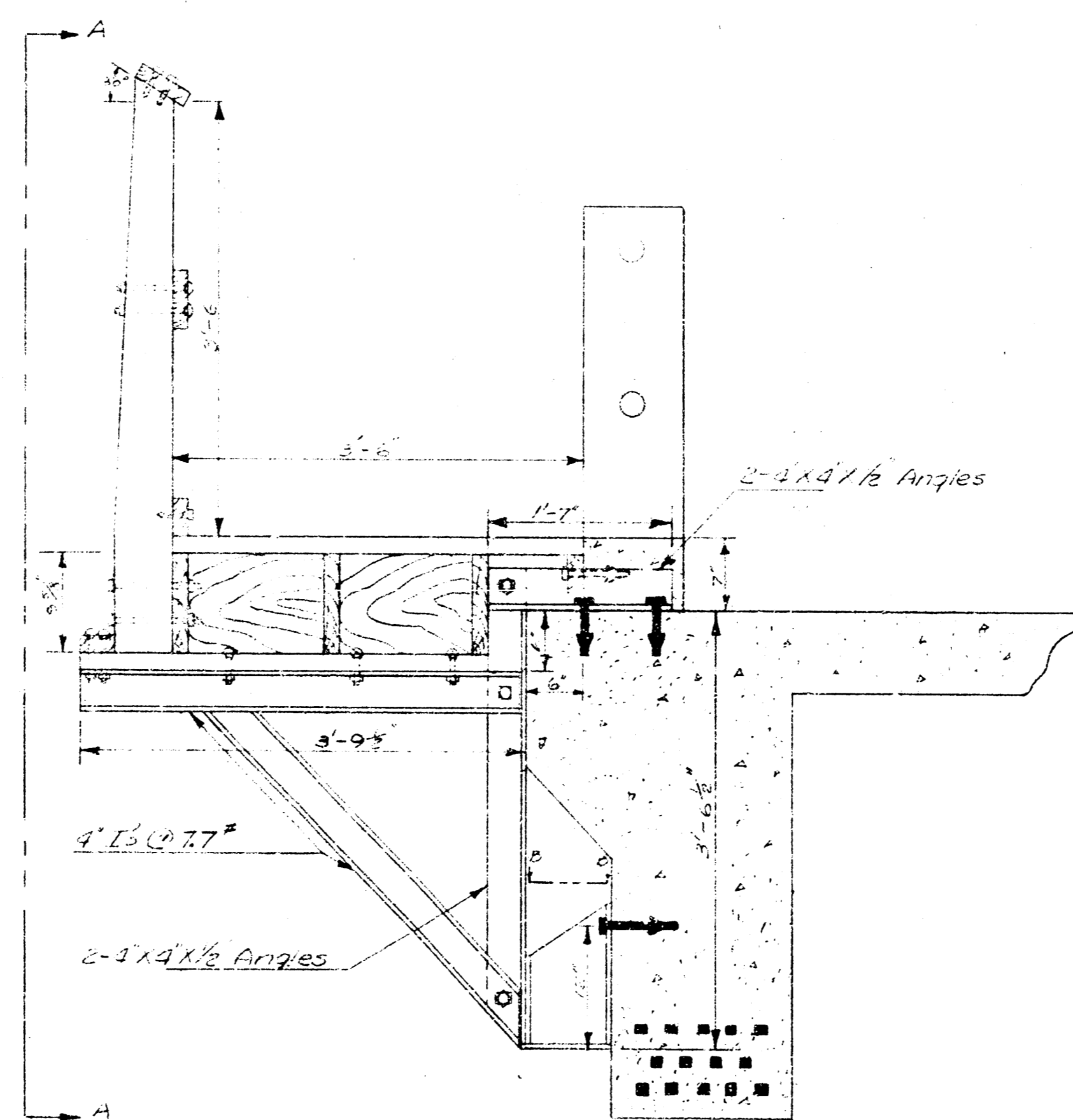
PLAN - WEST END APPROACH
Scale: 1/4" = 1'-0"



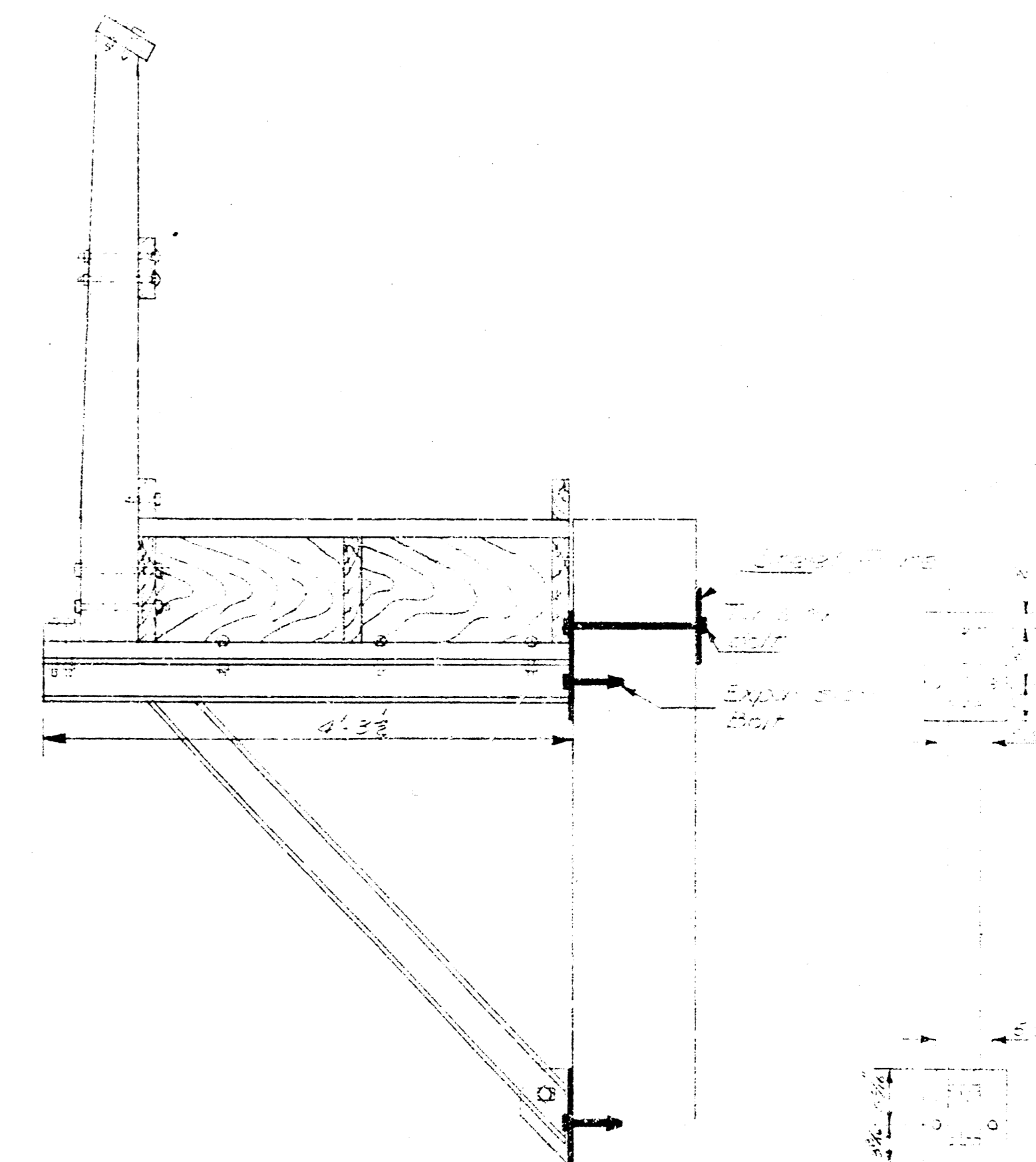
PLAN - EAST END APPROACH
Scale: 1/4" = 1'-0"



SECTION A-A
Scale: 1" = 1'-0"



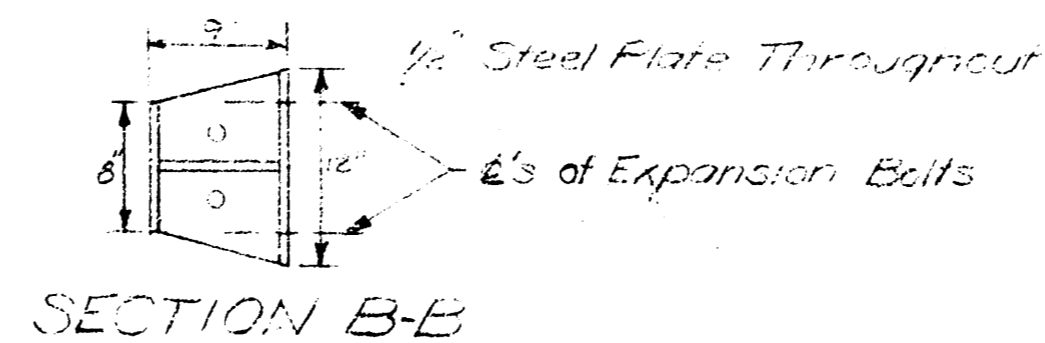
SECTION AT SUPPORT ON BRIDGE
Scale: 1" = 1'-0"



SECTION AT SUPPORT ON WING WALL
Scale: 1" = 1'-0"

INSTALLATION OF ANCHOR PLATES
Scale: 1" = 1'-0"

FOOT BRIDGE
ATTACHED TO
GEORGE WASHINGTON BLVD BRIDGE
ACROSS
DRAINAGE CANAL
WICHITA, KANSAS
PLAN ELEVATION & VARIOUS DETAILS
L. K. WHITE, CITY ENGINEER
JULY 1947



SECTION B-E