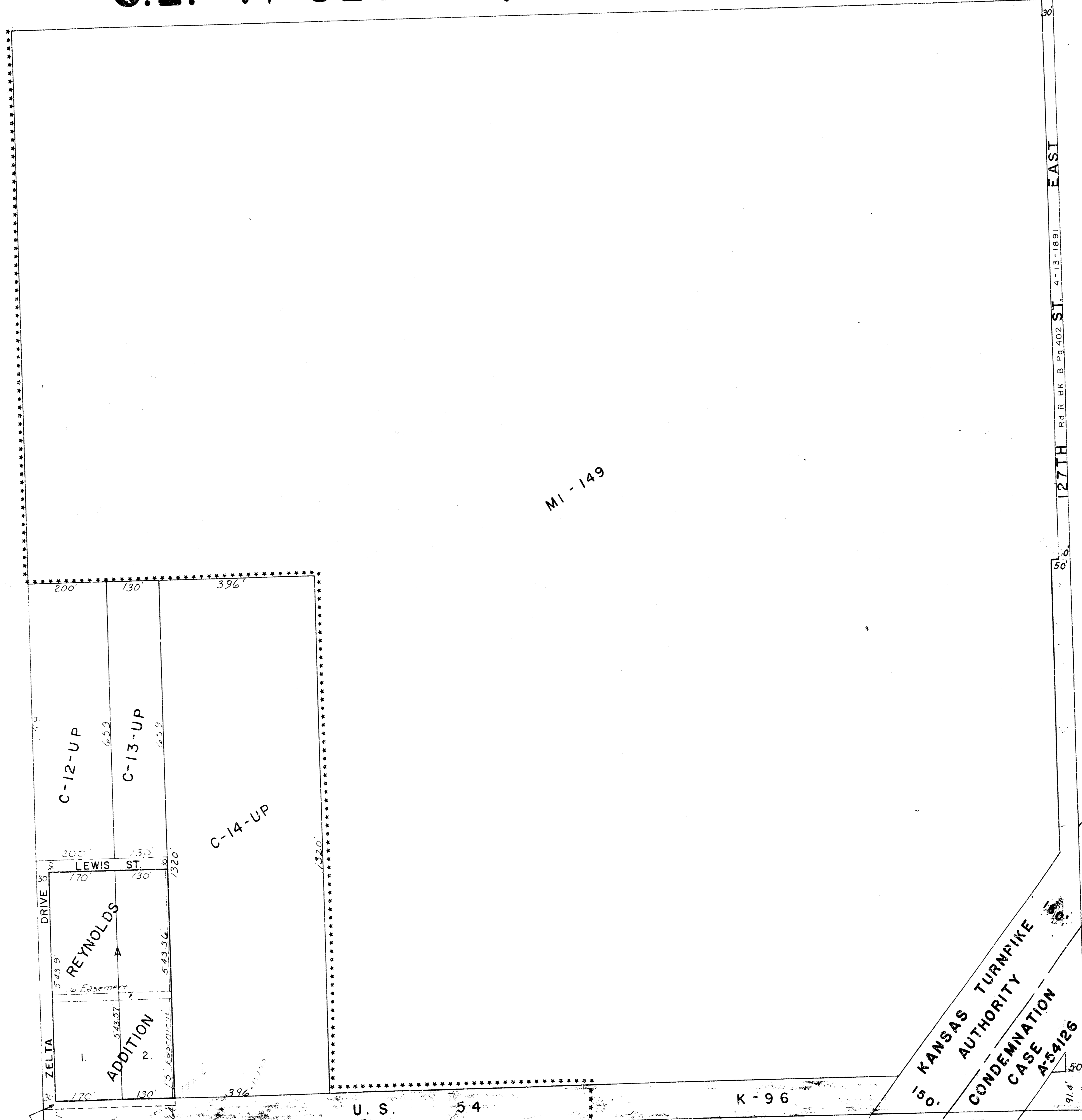


S.E. 1/4 SEC. 22, TWP. 27S, R2E. 14-53

14-53



KANSAS TURNPIKE
AUTHORITY
CONDEMNATION
CASE
A-34126

Access control acquired by state
between Kellogg Drive & Kellogg ST.

THIS SHEET PREPARED UNDER SUPERVISION OF
MARIE WARDEN, SEDGWICK COUNTY CLERK