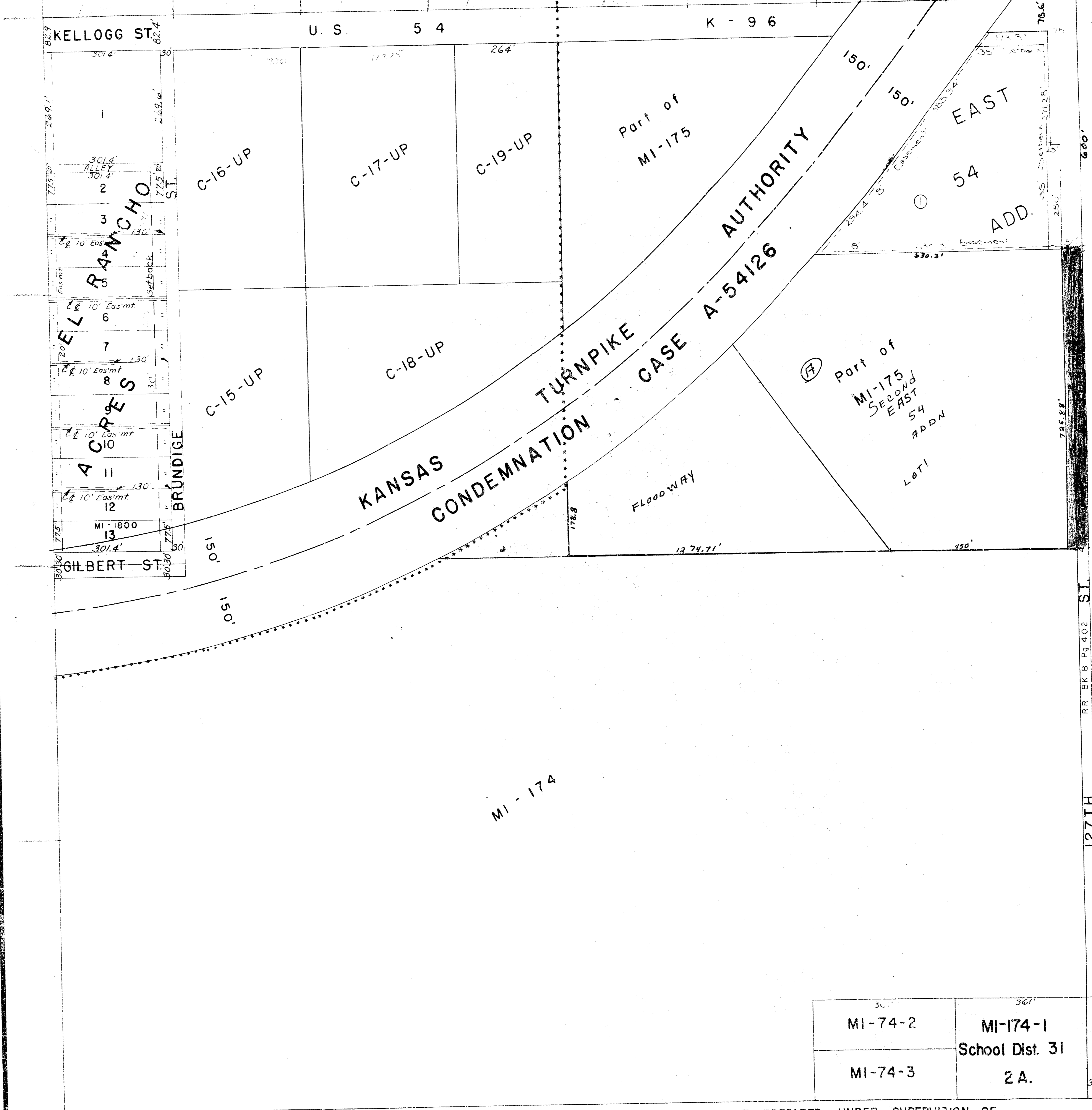


14-56

N.E. 1/4 SEC. 27, TWP. 27S, R2E.

C-14-56



MI-74-2	MI-174-1
MI-74-3	School Dist. 31
	2 A.

THIS SHEET PREPARED UNDER SUPERVISION OF
 MARIE WARDEN, SEDGWICK COUNTY CLERK