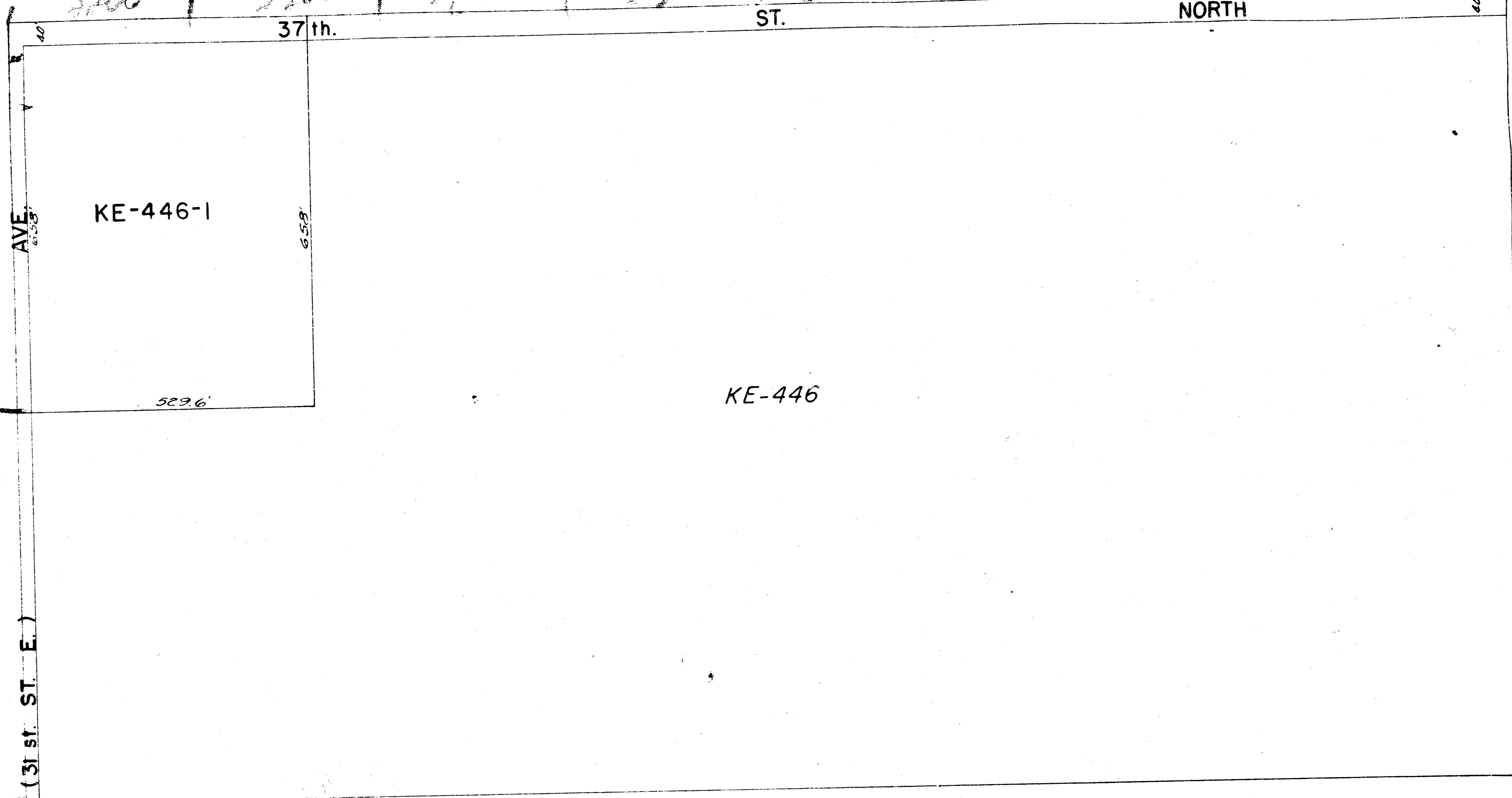


10-27

N.W. 1/4 SEC. 35. TWP. 26 S. R. 1 E.

3700 | 3300 | 3400 | 3500 | 3600 | 3700 | 3800 | 3900
ST. NORTH



KE-446-1

KE-446

KE-447

3700

3600

3500

3400

(31st. ST. E.)

HILLSIDE

AVE.

MO. PAC. R.R.
Part of
KE-451

THIS SHEET PREPARED UNDER SUPERVISION OF
MARIE WARDEN, SEDGWICK COUNTY CLERK

142 6