

S.W. 1/4 of SEC. 22 TWP. 27, R.1.E.

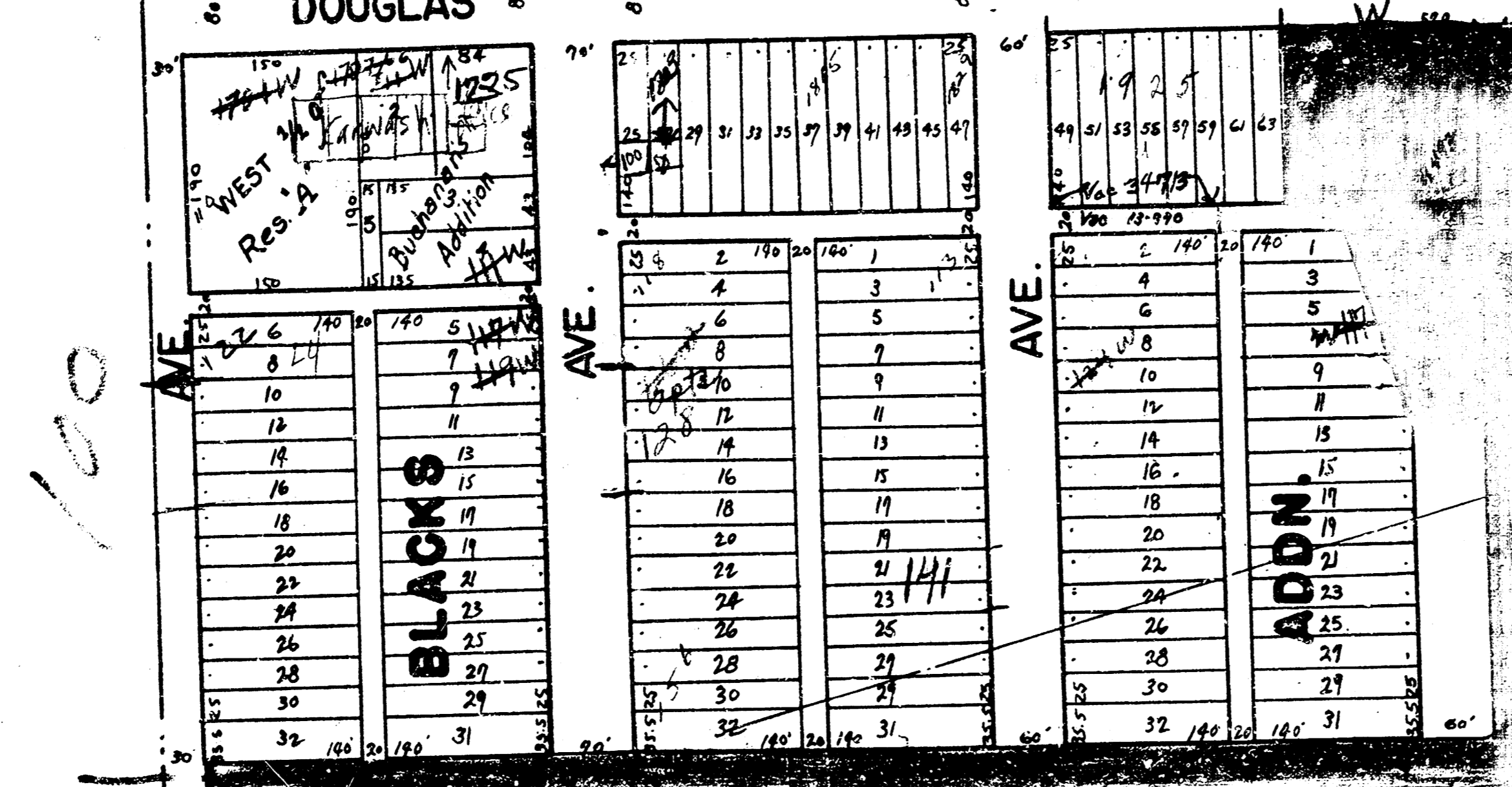
10-52

22

1700 | 1800 | 1900 | 2000 | 2100 | 2200 | 2300

DOUGLAS AVE.

AVE.

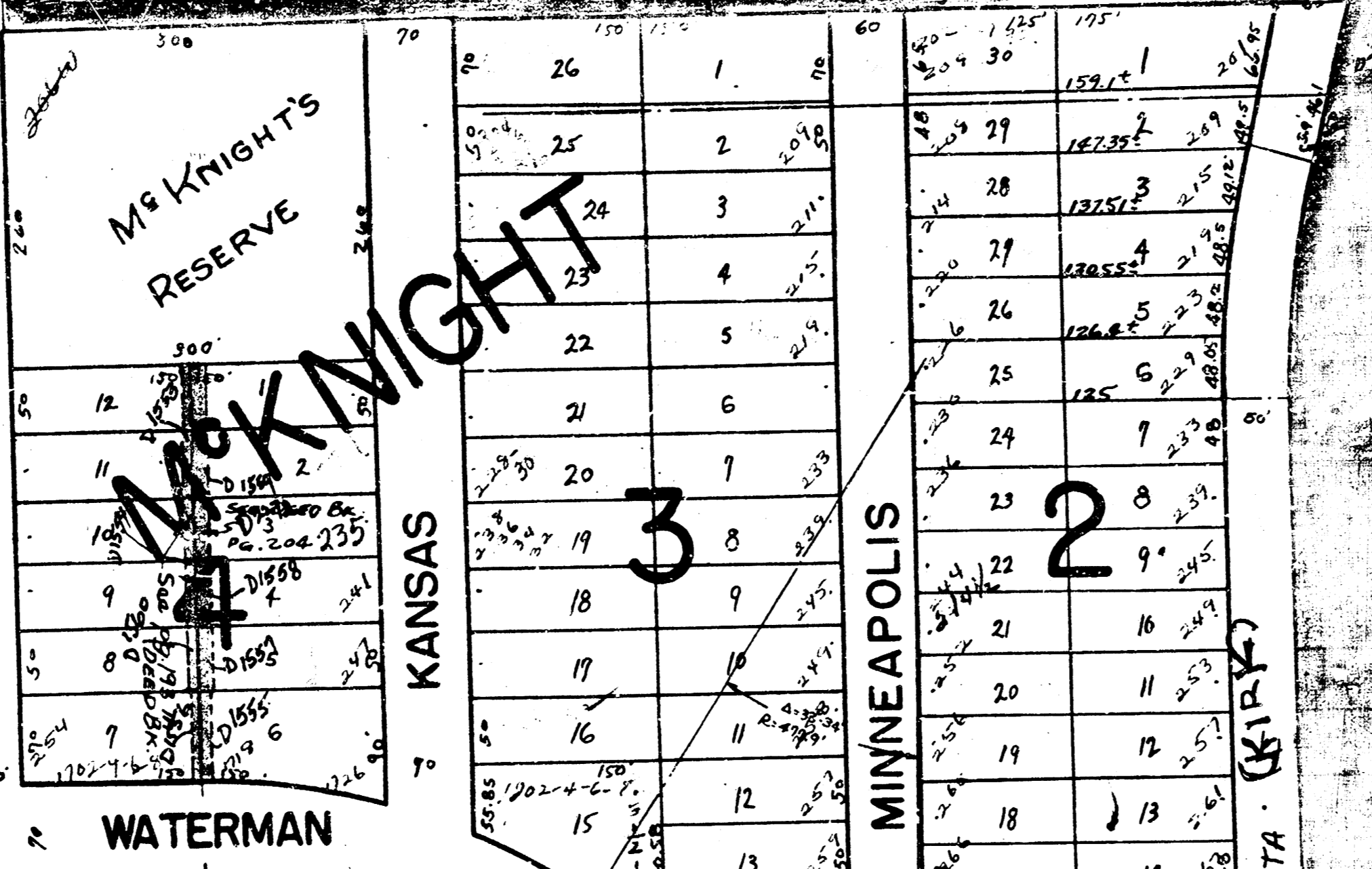


2301  
Riverside  
High

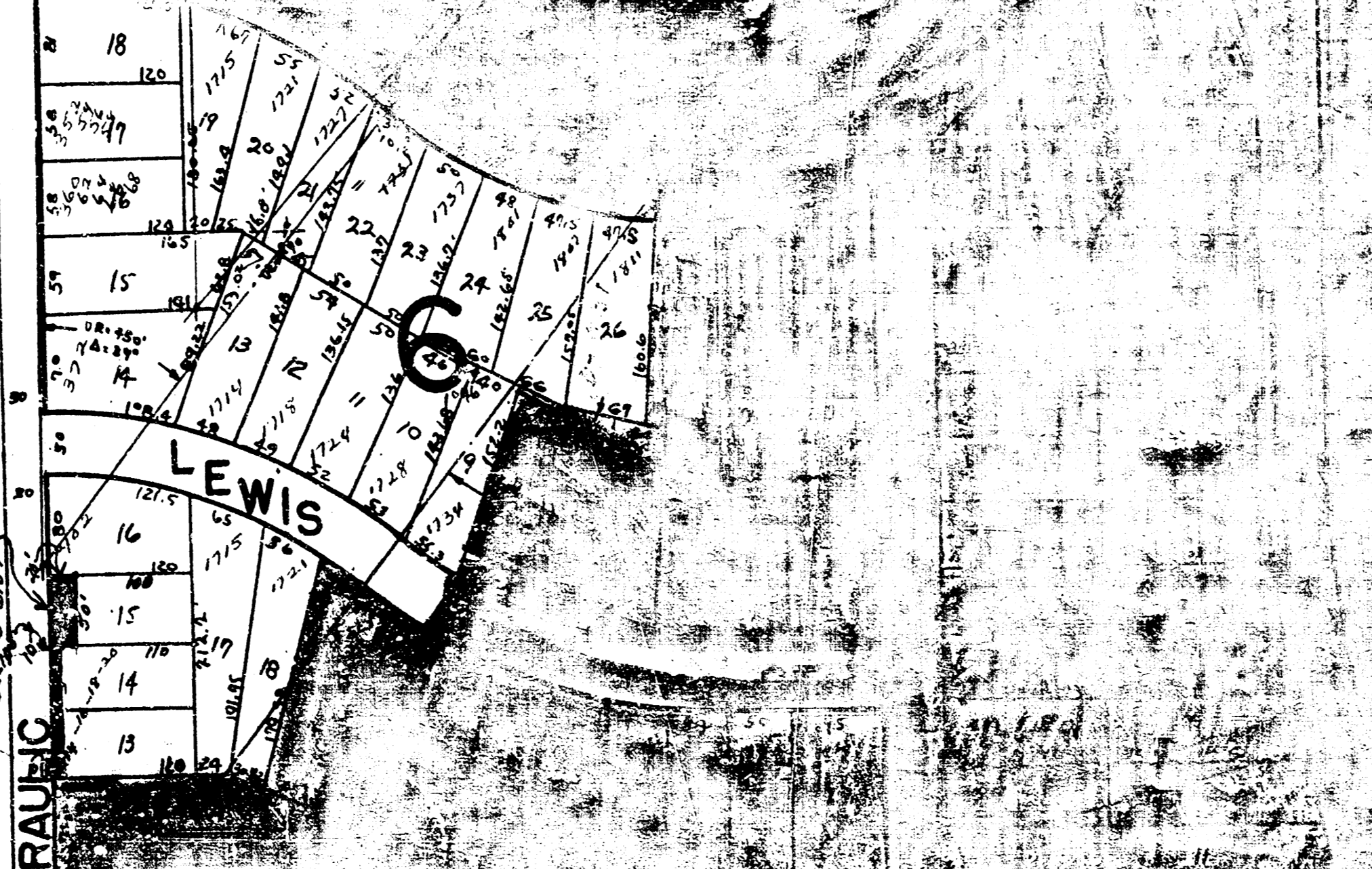
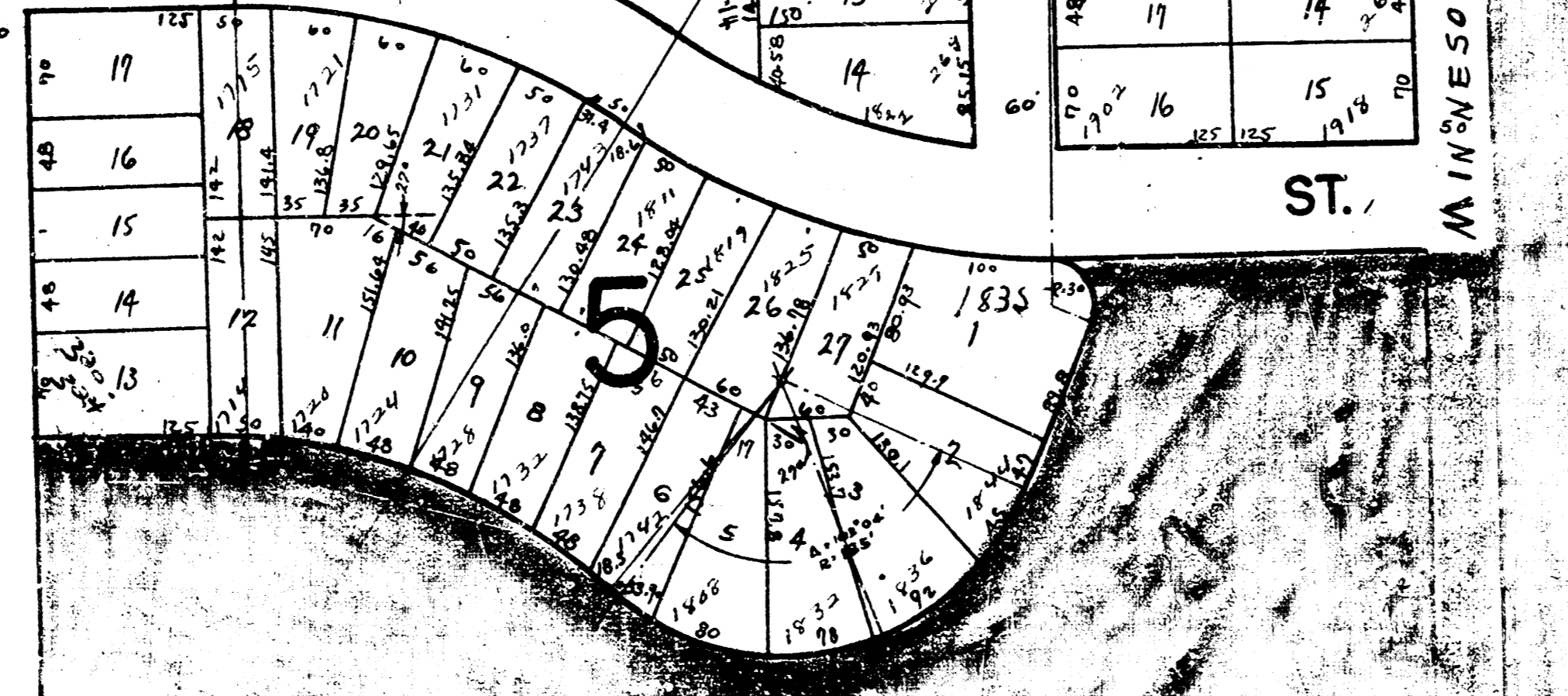
2301  
East High

K&E  
S&L STATION  
Former Substation  
located from the  
2121 E Douglas

100  
200  
300  
400



EAST HIGH SCHOOL



Comp. Dec. 15-736  
ORD # 16-183  
cc# A-29784  
BR M 252 P 225

Comp. Dec. 14-683  
ORD # 14-990  
cc# A-21971  
BR M 222 P 297

Comp. Dec. 14-683  
ORD # 14-990  
cc# A-21971  
BR M 222 P 297

ORD # 14-990  
cc# A-21971  
BR M 222 P 297