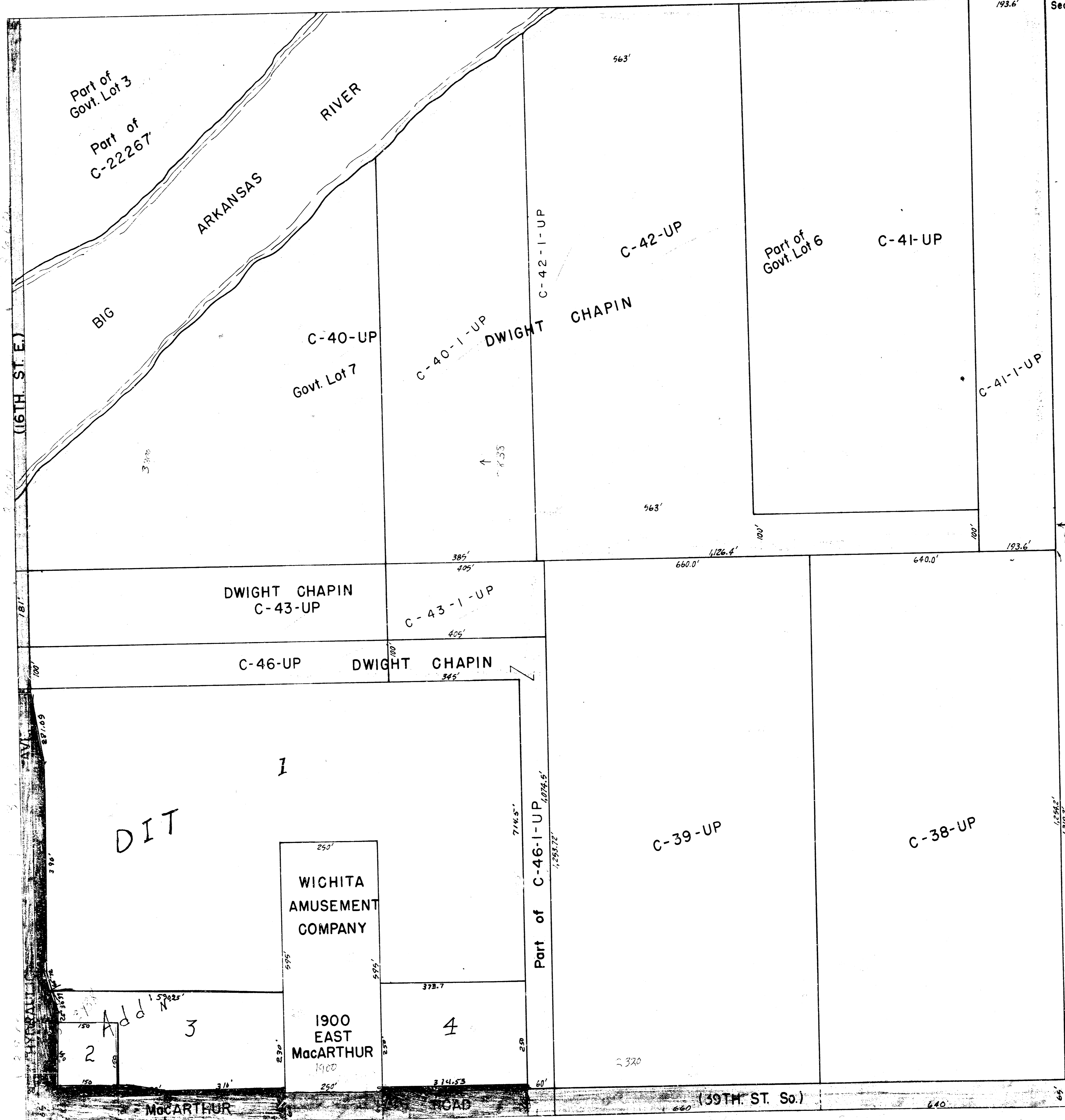


10-76

10-76

S.W. 1/4 SEC. 10, TWP. 28 S. R. 1 E.

N.E. Cor.  
S.W. 1/4  
Sec. 10



CITY COUNTY LANDFILL

Part of  
Govt. Lot 3  
Part of  
C-22267

ARKANSAS  
RIVER

BIG

C-40-UP  
Govt. Lot 7

C-40-1-UP

DWIGHT  
CHAPIN

C-42-UP

Part of  
Govt. Lot 6

C-41-UP

C-41-1-UP

DWIGHT CHAPIN  
C-43-UP

C-43-1-UP

C-46-UP DWIGHT CHAPIN

DIT

1

WICHITA  
AMUSEMENT  
COMPANY

1900  
EAST  
MacARTHUR

4

Part of C-46-1-UP

C-39-UP

C-38-UP

Add  
2 3

MacARTHUR

ROAD

(39TH ST. So.)