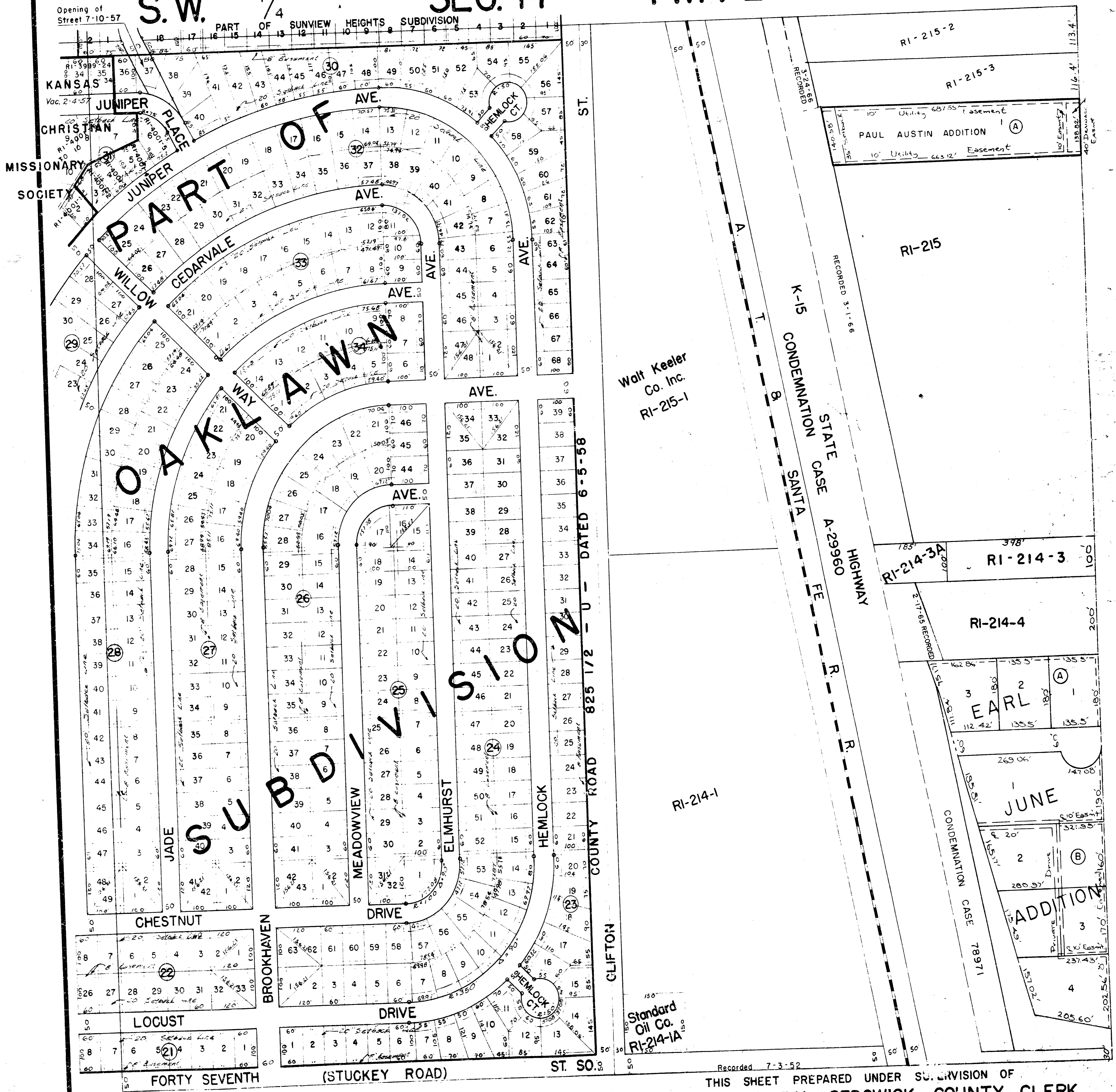


S.W. 1/4 SEC. 14

TWP. 28S

R. 1 E.



Walt Keeler Co. Inc. RI-215-1

RI-214-1

RI-215

RI-214-3A

RI-214-3

RI-214-4

EARL

JUNE

ADDITION

Standard Oil Co. RI-214-1A

THIS SHEET PREPARED UNDER SUPERVISION OF MARIE WARDE N, SEDGWICK COUNTY CLERK