

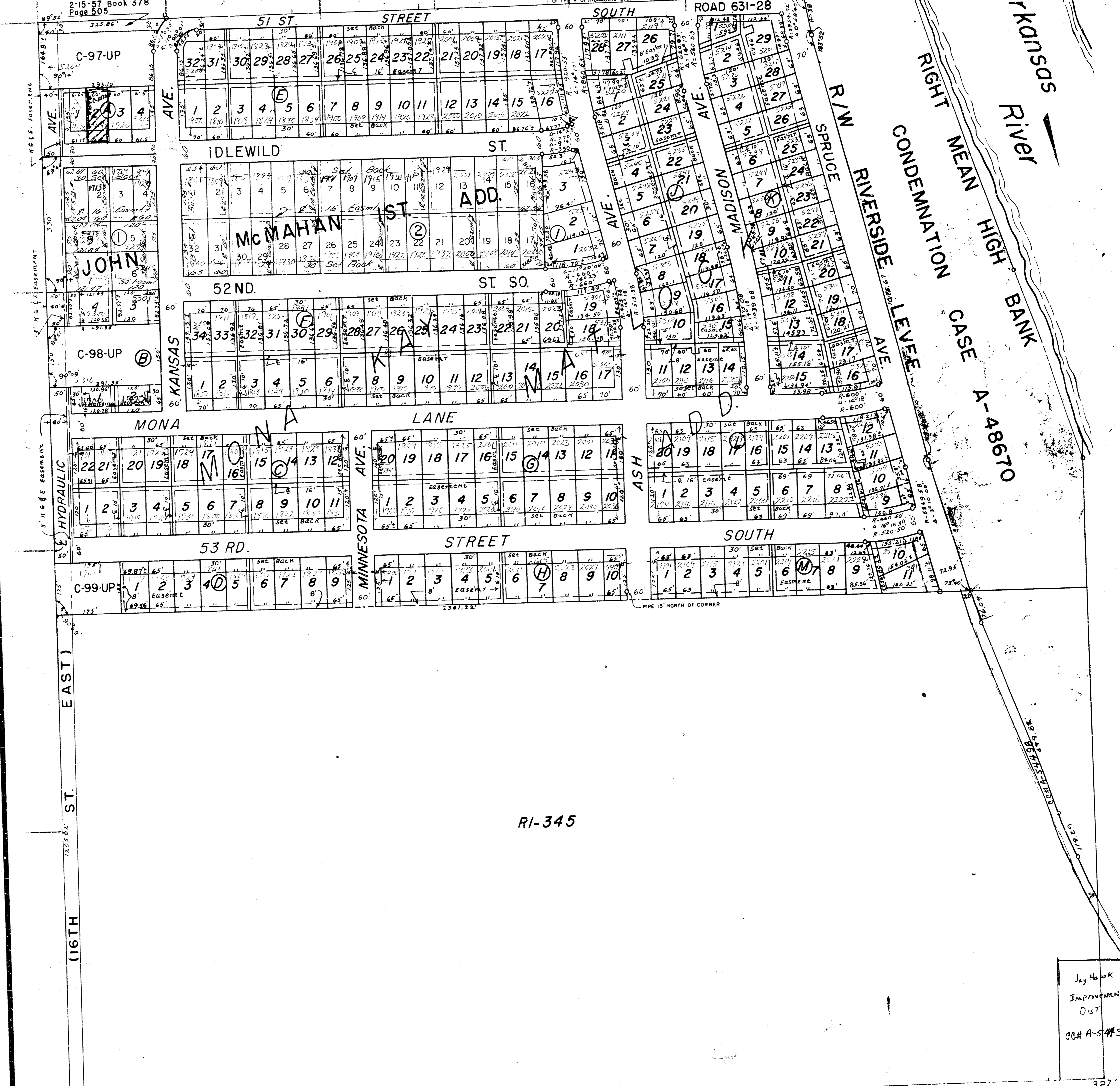
10-88

S.W. 1/4 SEC. 22, TWP. 28S. R. 1 E.

10-88

NOTES: (K.G.B.E. STANDS FOR KANSAS GAS & ELECTRIC CO.)
BUILDING SETBACK 30' FRONT OF LOT
ANCHOR EASEMENT 15' SIDE OF LOT
K.G.B.E. EASEMENT 4" CENTERED ON A LINE 4'-0" EAST
OF THE E. OF HYDRAULIC. SEE MAP IS 3'-0" WEST

Deed Recorded
2-15-57 Book 378
Page 505



RI-345

Jay Hawk
IMPROVEMENT
DIST
88# A-5498

327
3223.94
NET PREPARED UNDER SUPERVISION OF