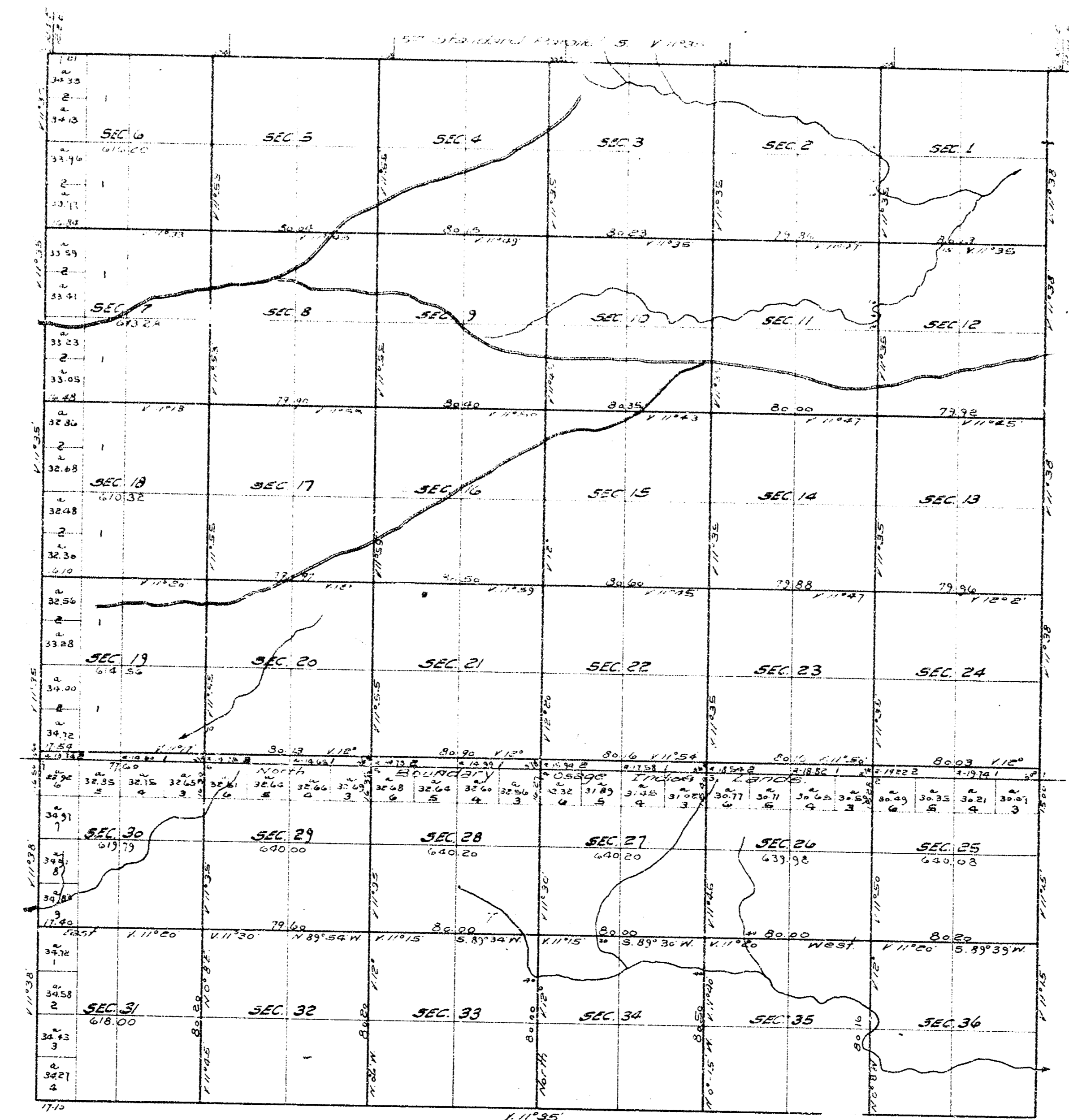


TOWNSHIP No 26 SOUTH OF RANGE No 2 EAST OF THE 6TH PRINCIPAL MERIDIAN, KAN.



Scale 20 Chains to one Inch.
Variations of the needle East.

The above Map of Township No. 26 South of Range No. 2 East of the 6th Principal Meridian, Kansas, is a true copy of the original plat Surveyor General's Office Lawrence, Kan. July 24-1872. C. H. BABCOCK
Surveyor General.

Copied Oct. 23-1930.
By RANSOM H. BEOWN
County Surveyor.