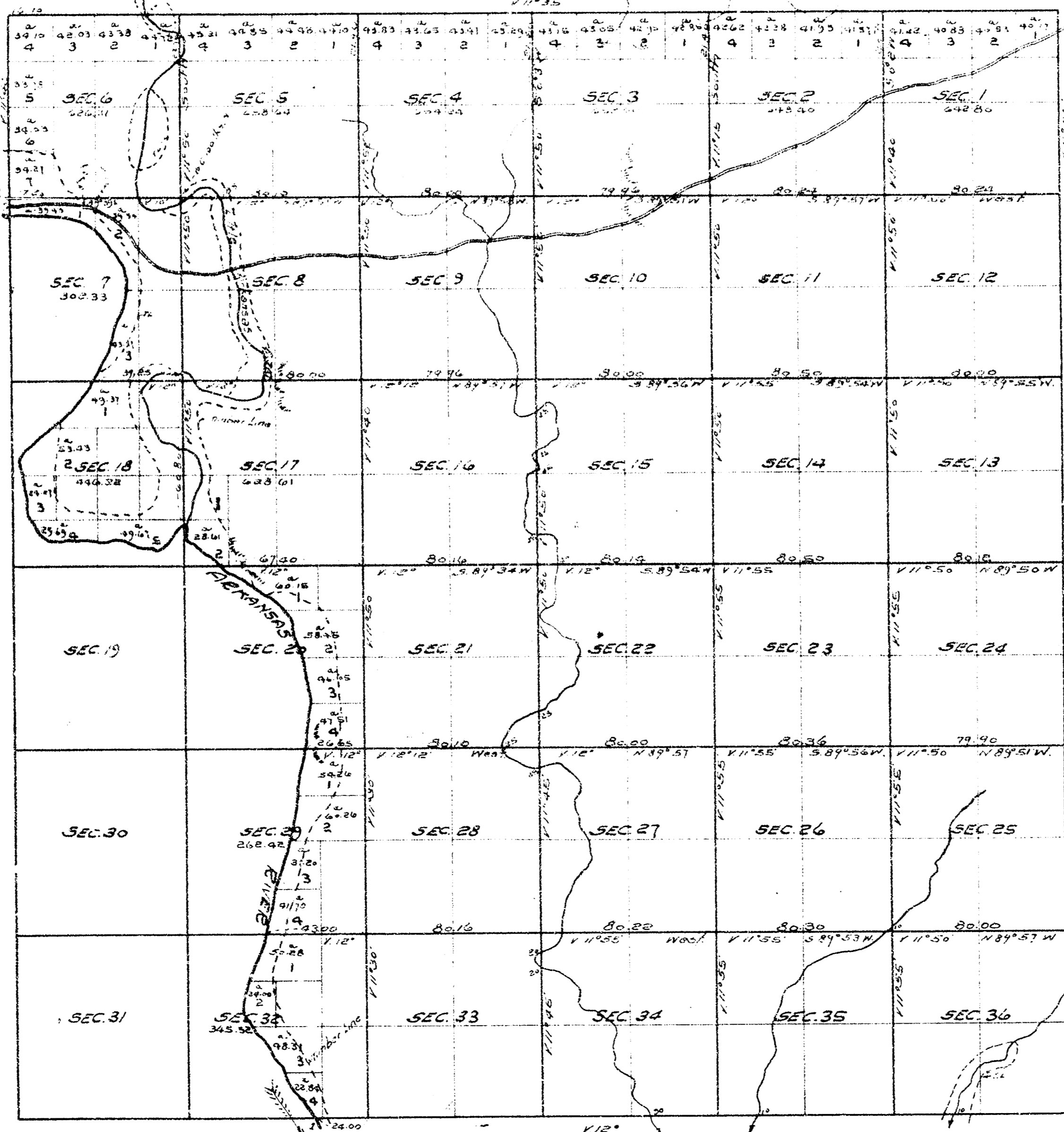


TOWNSHIP No. 27 SOUTH OF RANGE No. 1 EAST OF THE 6TH PRINCIPAL MERIDIAN, KAN.



Scale 40 chains to one Inch
Variations of the needle East

The above map of Township No. 27 South of Range No. 1 East of the
6th Principal Meridian, Kansas, is a true copy of the original plat
Surveyor General's Office
Lawrence, Kan. July 24th 1874. C. N. BABCOCK
Surveyor General.
Copied October 27th 1930.
By EMANUEL H. BROWN
County Surveyor.