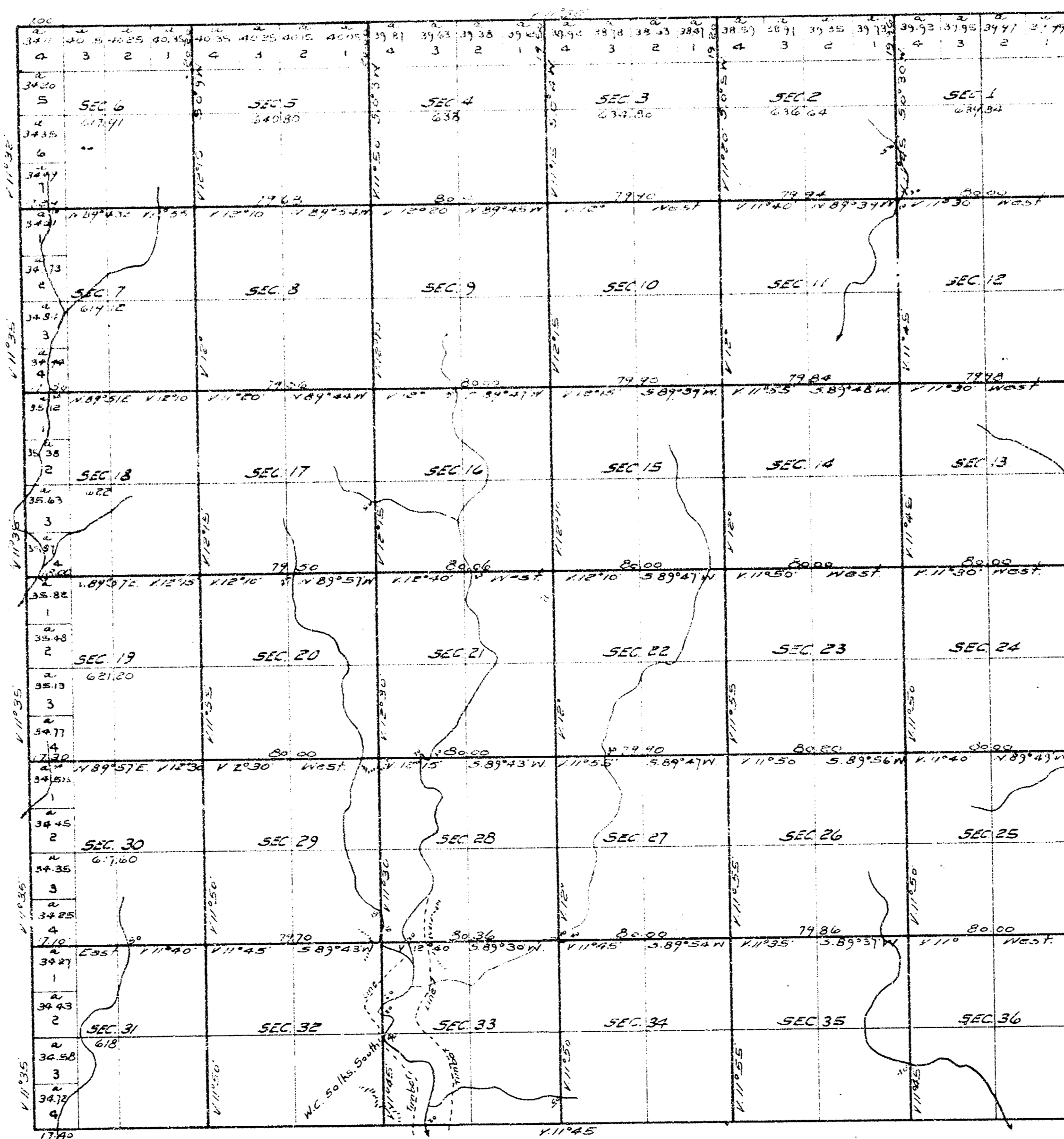


TOWNSHIP No 28 SOUTH OF RANGE No 2 EAST OF THE 6TH PRINCIPAL MERIDIAN KAN



Scale 40 Chains to one Inch,
Variations of the needle East.

The above map of Township No 28 South of Range No 2 East of the
6th Principal Meridian, Kansas, is a true copy of the original plat.
Surveyor General's Office
Lawrence, Kan, July 24-1874. C.W. BABCOCK
Surveyor General.
Copied Sept 25-1930
By ERANSON H BROWN
County Surveyor