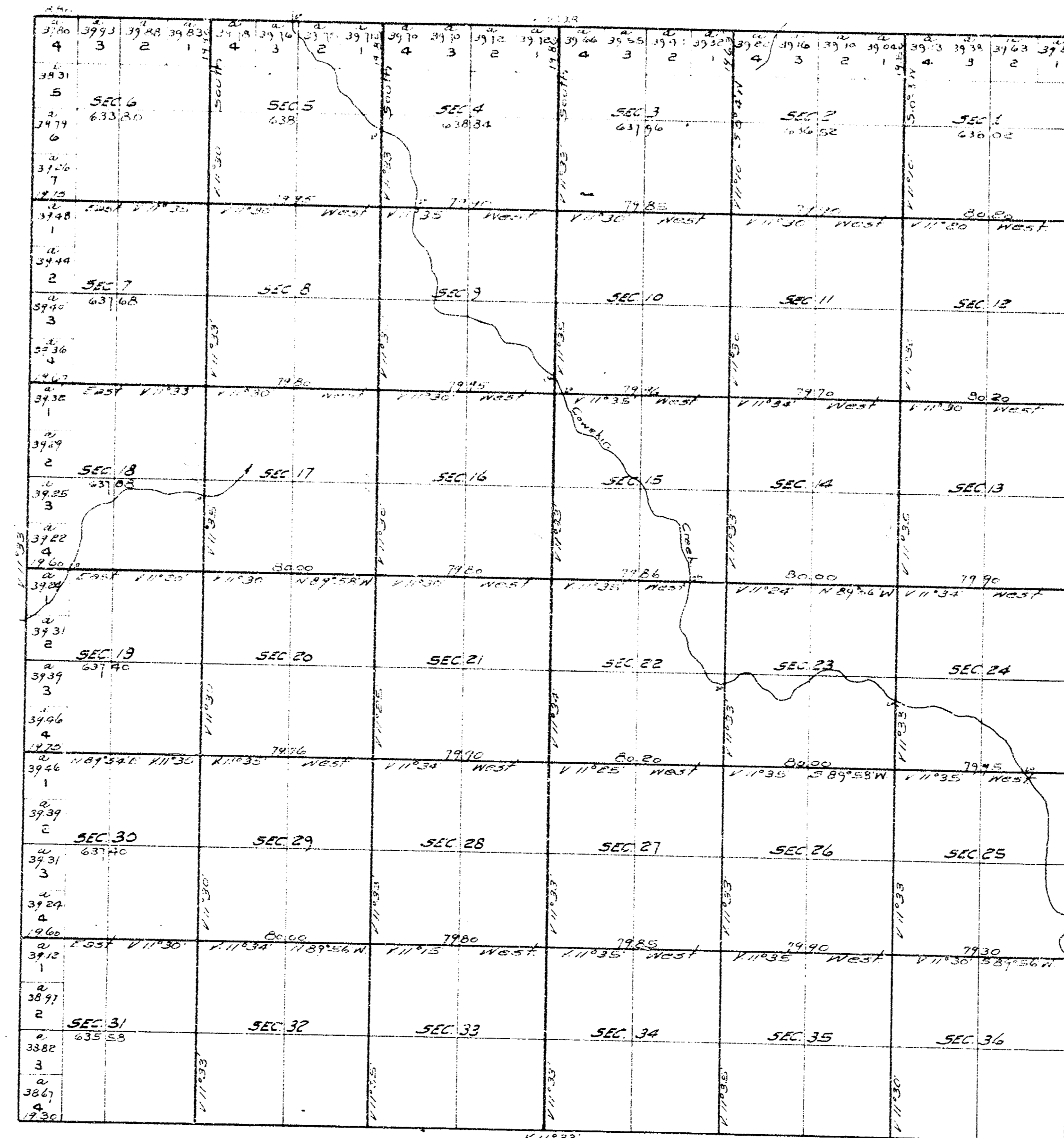


TOWNSHIP No. 28 SOUTH OF RANGE No. 1 WEST OF THE 6TH PRINCIPAL MERIDIAN, KAN.



Scale 40 chains to one inch
Variations of the needle East

The above Map of Township No. 28 South of Range No. 1 West of the
6th Principal Meridian, Kansas is a true copy of the original plat.
Surveyor General's Office,
Lawrence, Kan July 24, 1874 } C. H. BABCOCK
Surveyor General

Copied Sept. 25, 1930.
By, EANSON H. BROWN,
County Surveyor