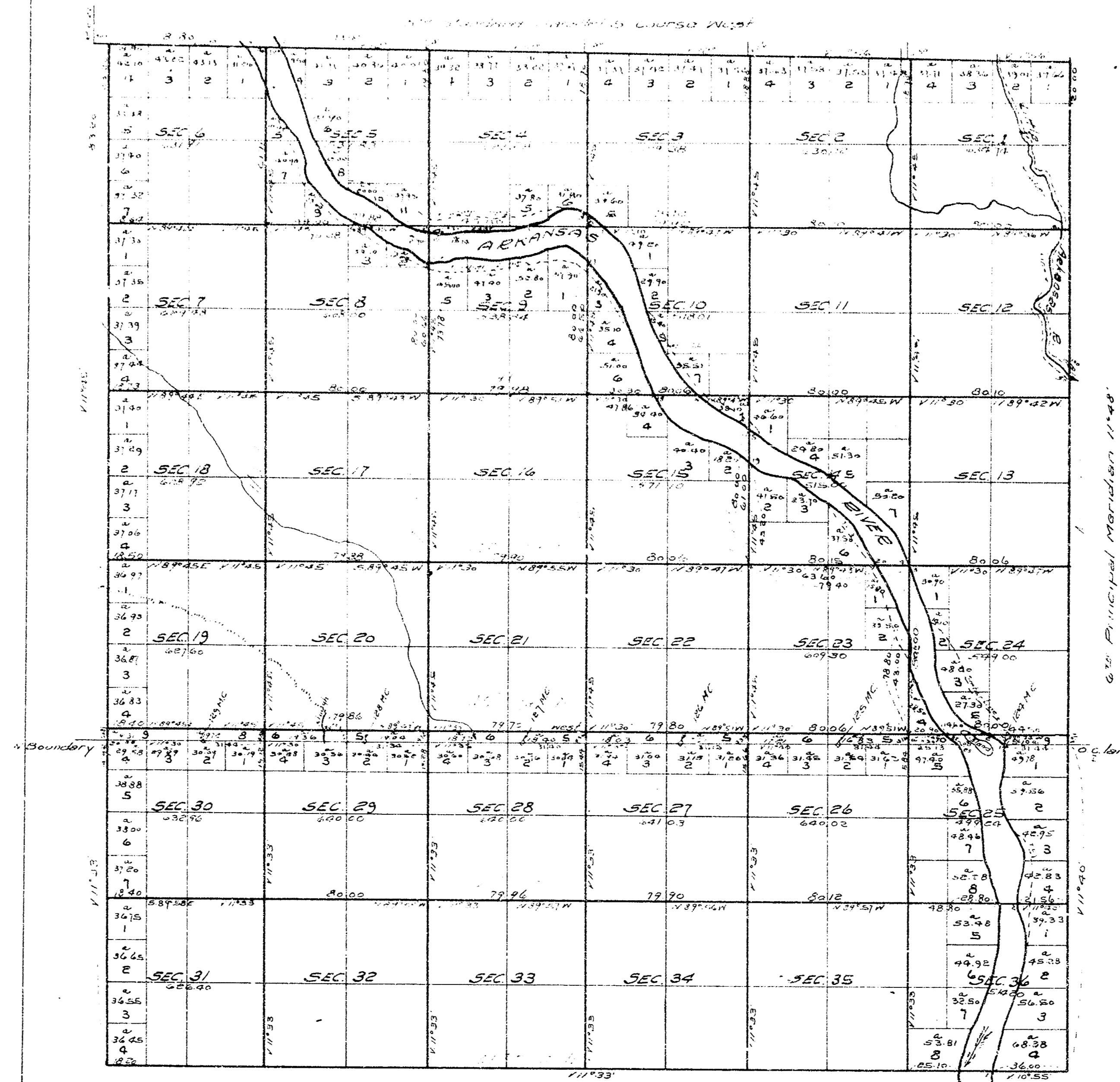


TOWNSHIP No 26 SOUTH OF RANGE No 1 WEST OF THE 6<sup>TH</sup> PRINCIPAL MERIDIAN, KAN. 14



Scale 40 Chains to One Inch  
Variations of the Needle East

The above Map of Township No 26 South of Range No 1 West of the  
6<sup>th</sup> Principal Meridian Kansas is a true copy of the original plat  
Surveyor General's Office  
Lawrence, Kan. July 24<sup>th</sup> 1875. C. W. BABCOCK  
Surveyor General.

Copied Oct 17<sup>th</sup> 1930.  
By - RANSOM H. BROWN  
County Surveyor