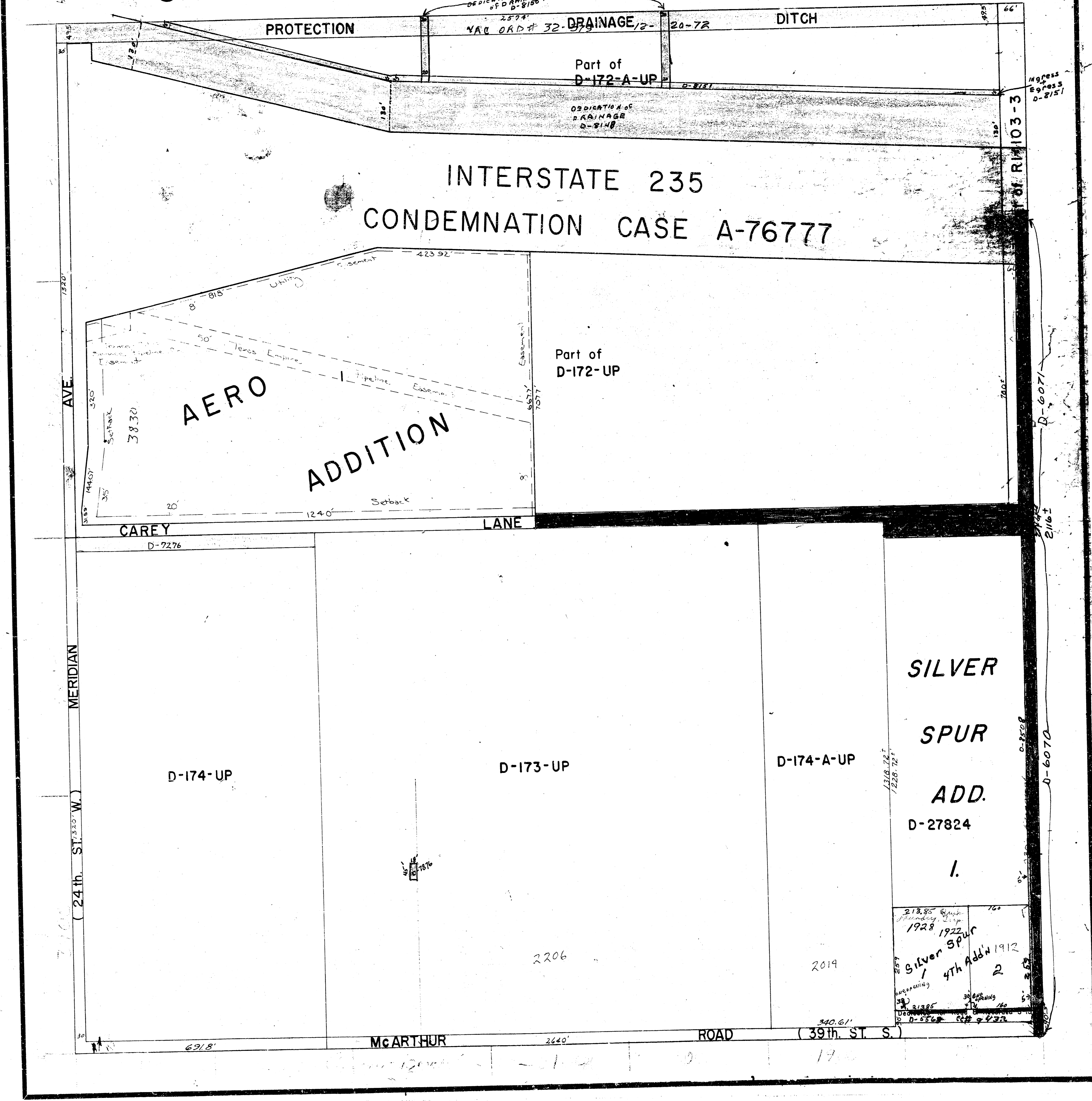


8-76 RI 28

# S.W. 1/4 SEC. 7, TWP. 28 S. R. 1 E.



SILVER  
SPUR  
ADD.  
D-27824  
I.

213.85	160
1928	1922
Silver Spur	4th Add'n 1912
1	2

2206

2019

6918'

McARTHUR ROAD

2640'

ROAD (39th. ST. S.)

340.61'

17