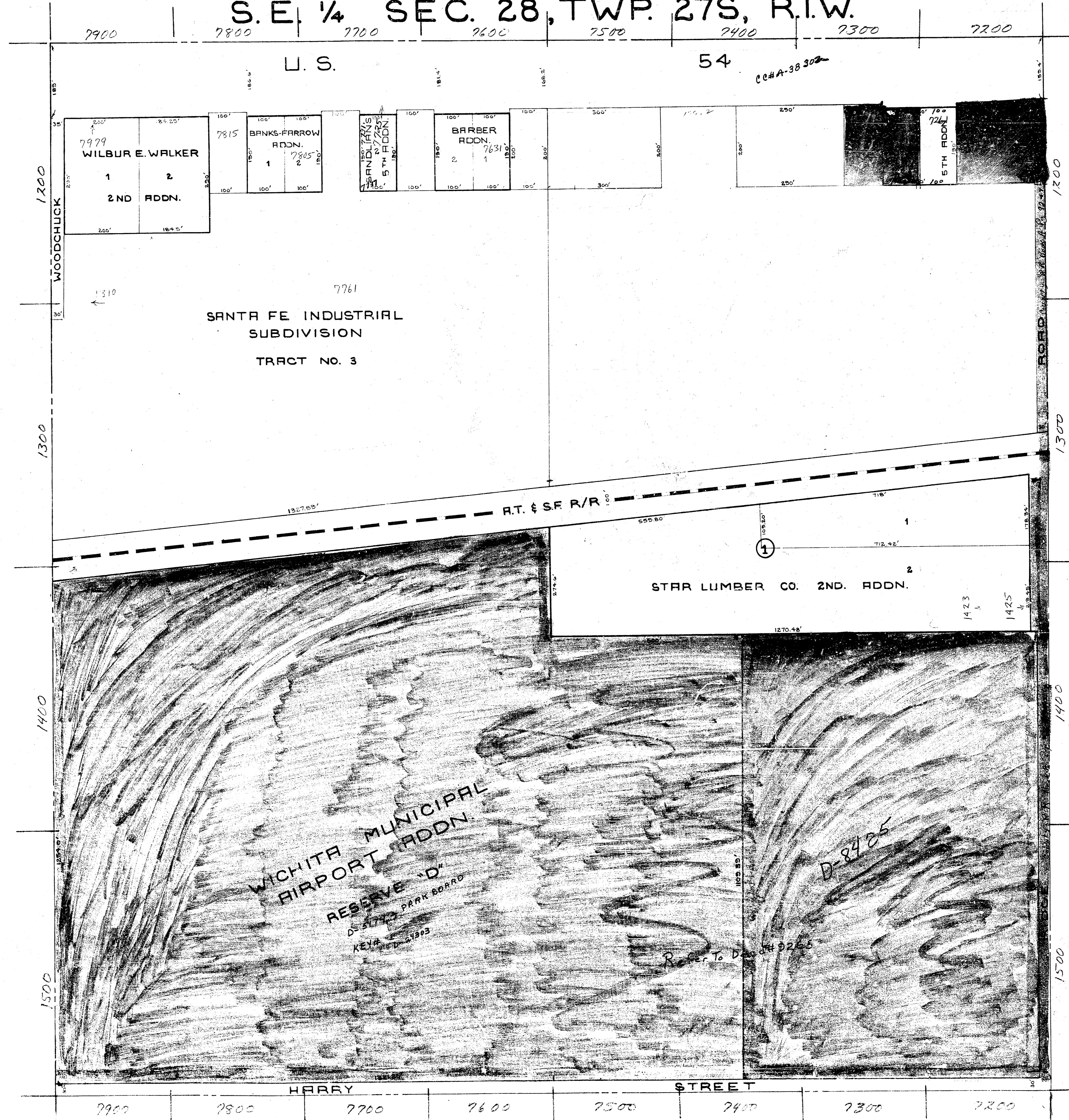


5-60

5-60

S. E. 1/4 SEC. 28, TWP. 27S, R.1.W.



7900 7800 7700 7600 7500 7400 7300 7200

U. S. 54

1200
WOODCHUCK

1300

1400

1500

1200

1300

1400

1500

WOODCHUCK

7761
SANTA FE INDUSTRIAL
SUBDIVISION
TRACT NO. 3

7979
WILBUR E. WALKER
2ND ADDN.

7815
BANKS-FARROW
ADDN.

7631
BARBER
ADDN.

7241
5TH ADDN.

STAR LUMBER CO. 2ND. ADDN.

WICHITA MUNICIPAL
AIRPORT ADDN.
RESERVE "D"
DESIGNED BY PARK BOARD
KEY

D-8425

HARRY STREET

7900 7800 7700 7600 7500 7400 7300 7200