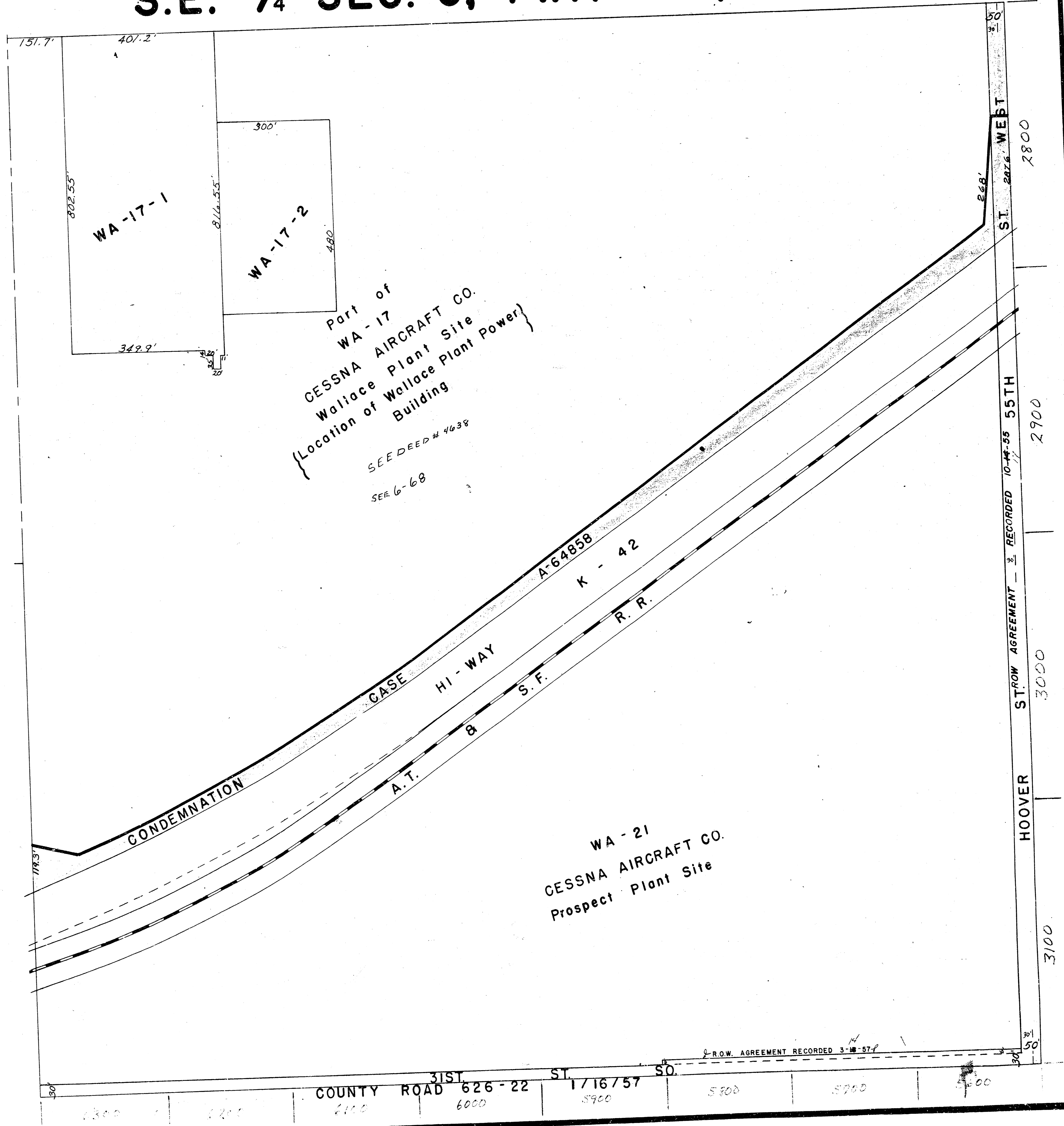


6-71

6-71

S.E. 1/4 SEC. 3, TWP. 28S, R.1W.



WA-17-1

WA-17-2

Part of
WA-17
CESSNA AIRCRAFT CO.
Wallace Plant Site
(Location of Wallace Plant Power)

SEE DEED # 4638
SEE 6-68

CONDEMNATION

GASE

HI-WAY

A.T.

&

S.F.

R.R.

A-64858

K - 42

WA-21
CESSNA AIRCRAFT CO.
Prospect Plant Site

ST. 2876 WEST

ST. 10-14-55 55TH

HOOVER

COUNTY ROAD 626-22

ST. 1/16/57

R.O.W. AGREEMENT RECORDED 3-18-57

2300 2200 2100 6000 5900 5800 5700 5600