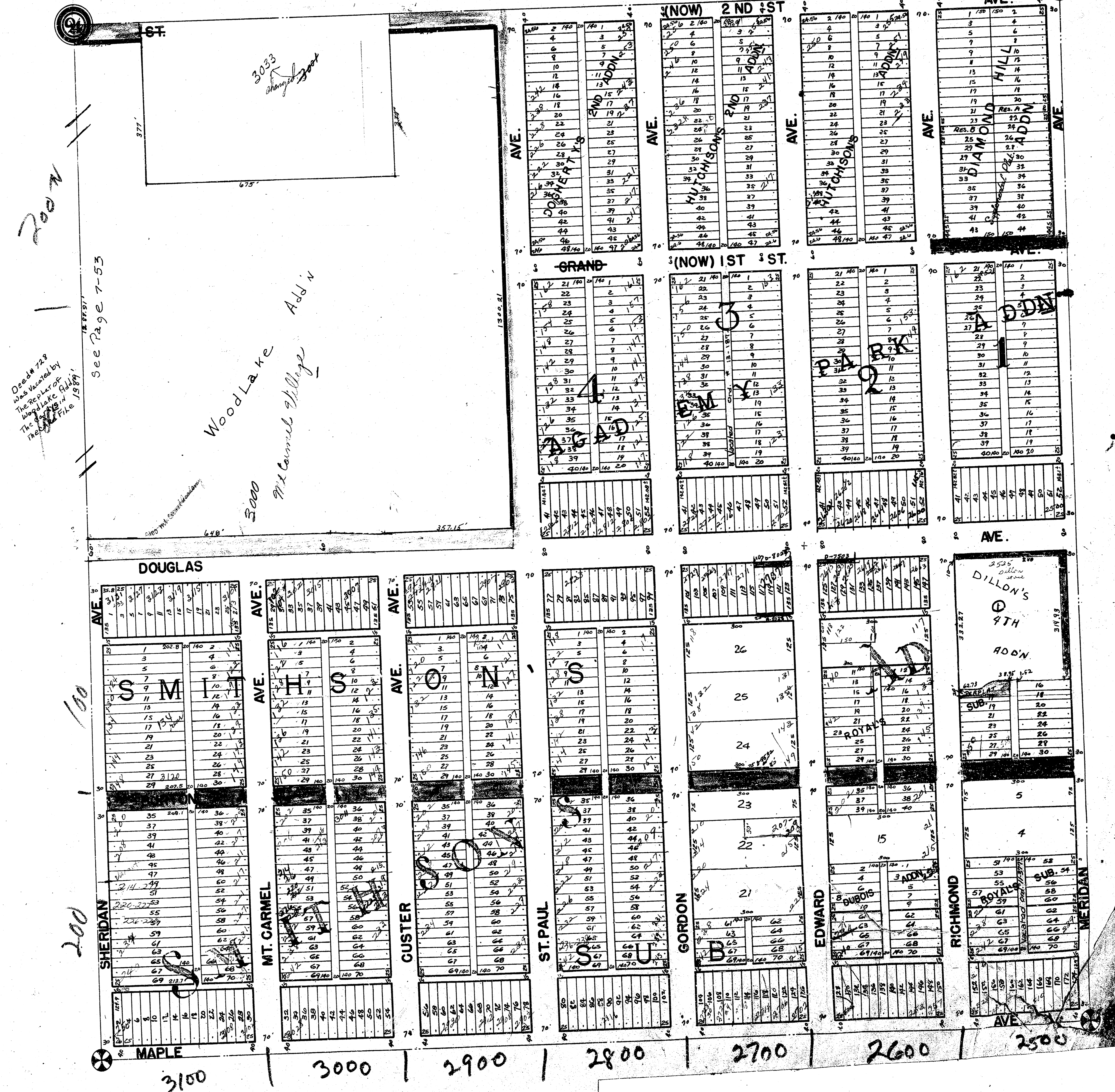


S.E. QUARTER SEC. 24, TWP. 27 S. R. 1 W.

7-54



Dead # 728
Was Varied by
The Registrar of
The State of W.
The File 19891

See Page 7-53

Wood Lake Add'n
3000
974 Cornish Village

Dillon's
4th
Add'n

3100

3000

2900

2800

2700

2600

2500