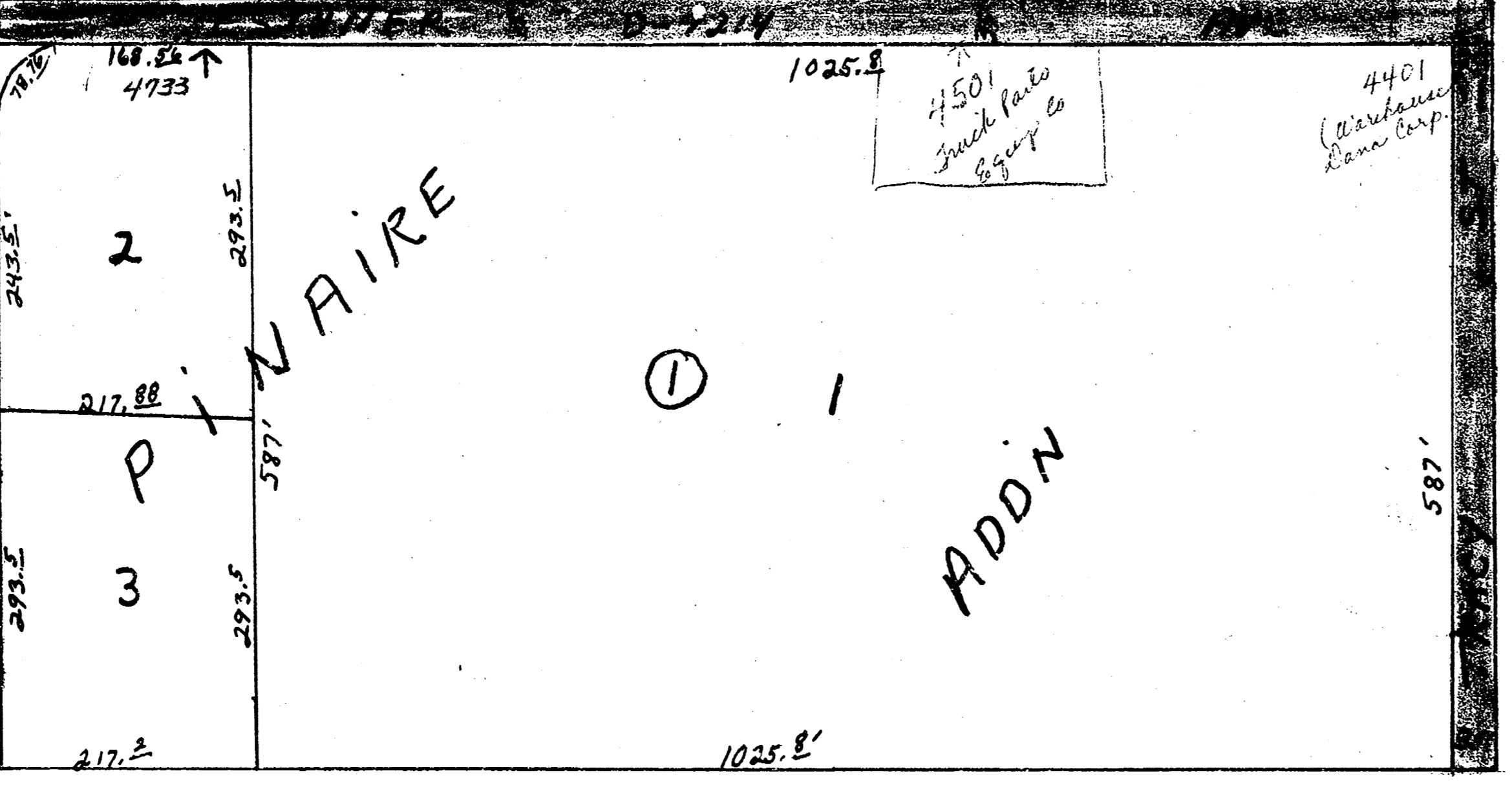
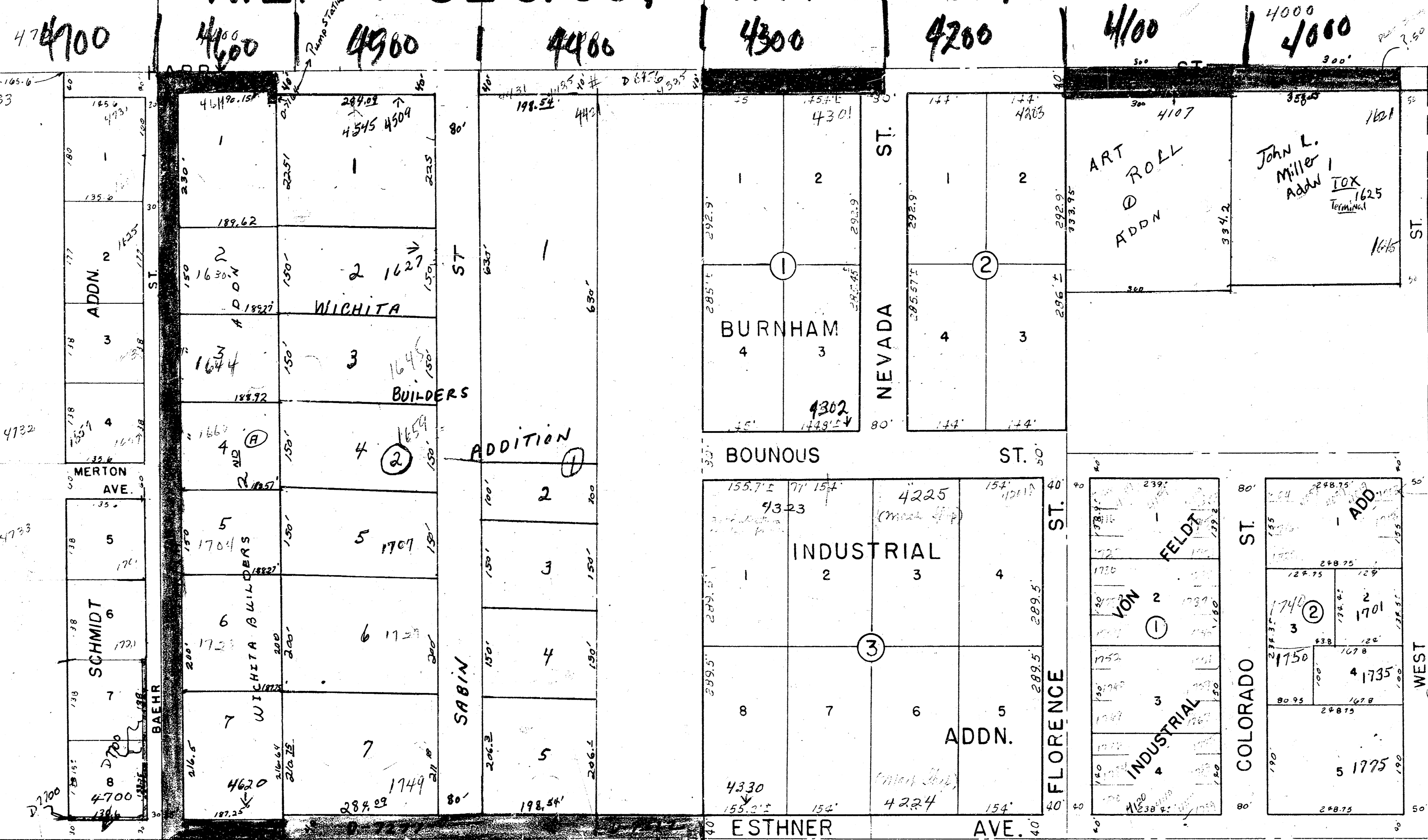


N.E. 1/4 SEC. 35, TWP. 27 S., R. 1 W.

7-61
MAY 20 1961



1600

1700

1800

1900

ANNA

1600

ADDN.

1

2

3

4733

217.88

293.5

217.3

1025.8

1025.8

4501

4401

587'

587'

587'

4401

4401

587'

587'

587'

4733

4732

4733

4732

4733

4732

4733

4732

4733

4732

4733

4732

4733

4732

4733

4732

4733

4732

4733

4732

4733

4732

168.22

168.22

168.22

168.22

168.22

168.22

168.22

168.22

168.22

168.22

168.22

168.22

168.22

168.22

168.22

168.22

168.22

168.22

168.22

168.22

168.22

168.22

168.22

168.22

168.22

168.22

168.22

168.22

168.22

168.22

168.22

168.22

168.22

168.22

168.22

168.22

168.22

168.22

168.22

168.22

168.22

168.22

168.22

168.22

168.22

168.22

168.22

168.22

168.22

168.22

168.22

168.22

168.22

168.22

168.22

168.22

168.22

168.22

168.22

168.22

168.22

168.22

168.22

168.22

168.22

168.22

168.22

168.22

168.22

168.22

168.22

168.22

168.22

168.22

168.22

168.22

168.22

168.22

168.22

168.22

168.22

168.22

168.22

168.22

168.22

168.22

168.22

168.22

168.22

168.22

168.22

168.22

168.22

168.22

168.22

168.22

168.22

168.22

168.22

168.22

168.22

168.22

168.22

168.22

168.22

168.22

168.22

168.22

168.22

168.22

168.22

168.22

168.22

168.22

168.22

168.22

168.22

168.22

168.22

168.22

168.22

168.22

168.22

168.22

168.22

168.22

168.22

168.22

168.22

168.22

168.22

168.22

168.22

168.22

168.22

168.22

168.22

168.22

168.22

168.22

168.22

168.22

168.22

168.22

168.22

168.22

168.22

168.22

168.22

168.22

168.22

168.22

168.22

168.22

168.22

168.22

168.22

168.22

168.22

168.22

168.22

168.22

168.22

168.22

168.22

168.22

168.22

168.22

168.22

168.22

168.22

168.22

168.22

168.22

168.22

168.22

168.22

168.22

168.22

168.22

168.22

168.22

168.22

168.22

168.22

168.22

168.22

168.22

168.22

168.22

168.22

168.22

168.22

168.22

168.22

168.22

168.22

168.22

168.22

168.22

168.22

168.22

168.22

168.22

168.22

168.22

168.22

168.22

168.22

168.22

168.22

168.22

168.22

168.22

168.22

168.22

168.22

168.22

168.22

168.22

168.22

168.22

168.22

168.22

168.22

168.22

168.22

168.22

168.22

168.22

168.22

168.22

168.22

168.22

168.22

168.22

168.22

168.22

168.22

168.22

168.22

168.22

168.22

168.22

168.22

168.22

168.22

168.22

168.22

168.22

168.22

168.22

168.22

168.22