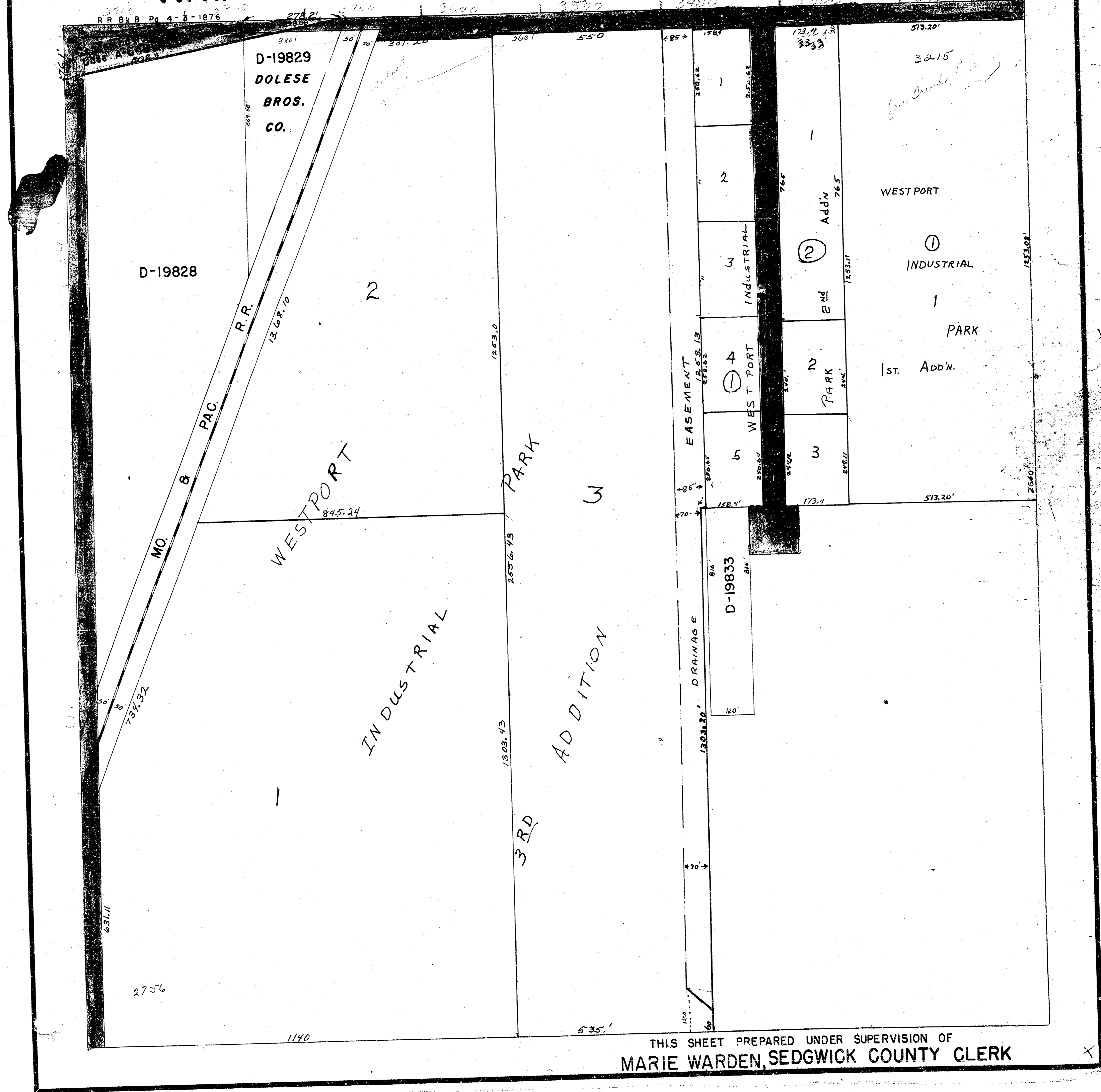


7-68

N.W. 1/4 SEC. I, TWP. 28 S. R. 1 W. 7-68

RR Bk B Pg 4-5-1876 3700 3740 3780 3820 3860 3900 3940



THIS SHEET PREPARED UNDER SUPERVISION OF MARIE WARDEN, SEDGWICK COUNTY CLERK