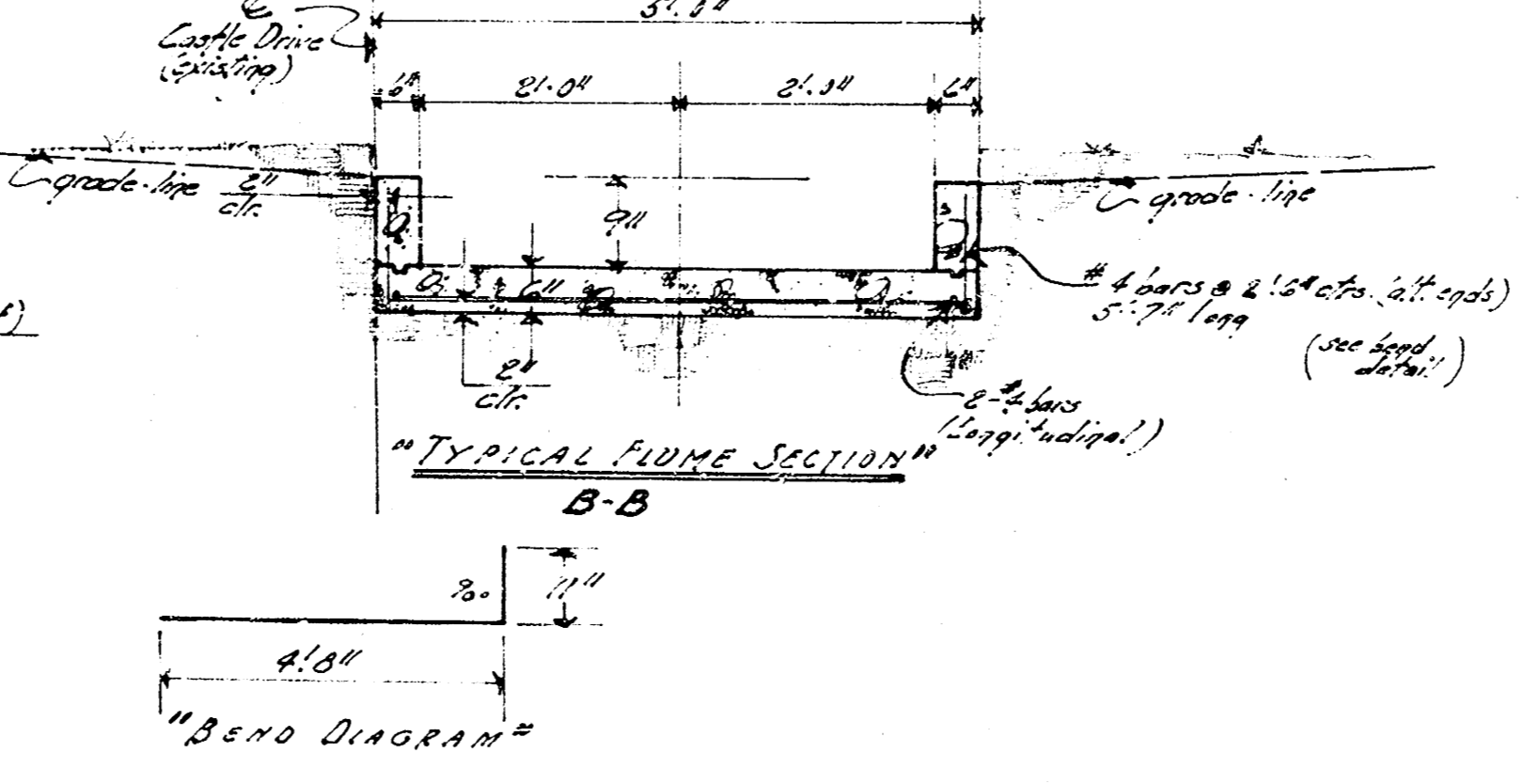
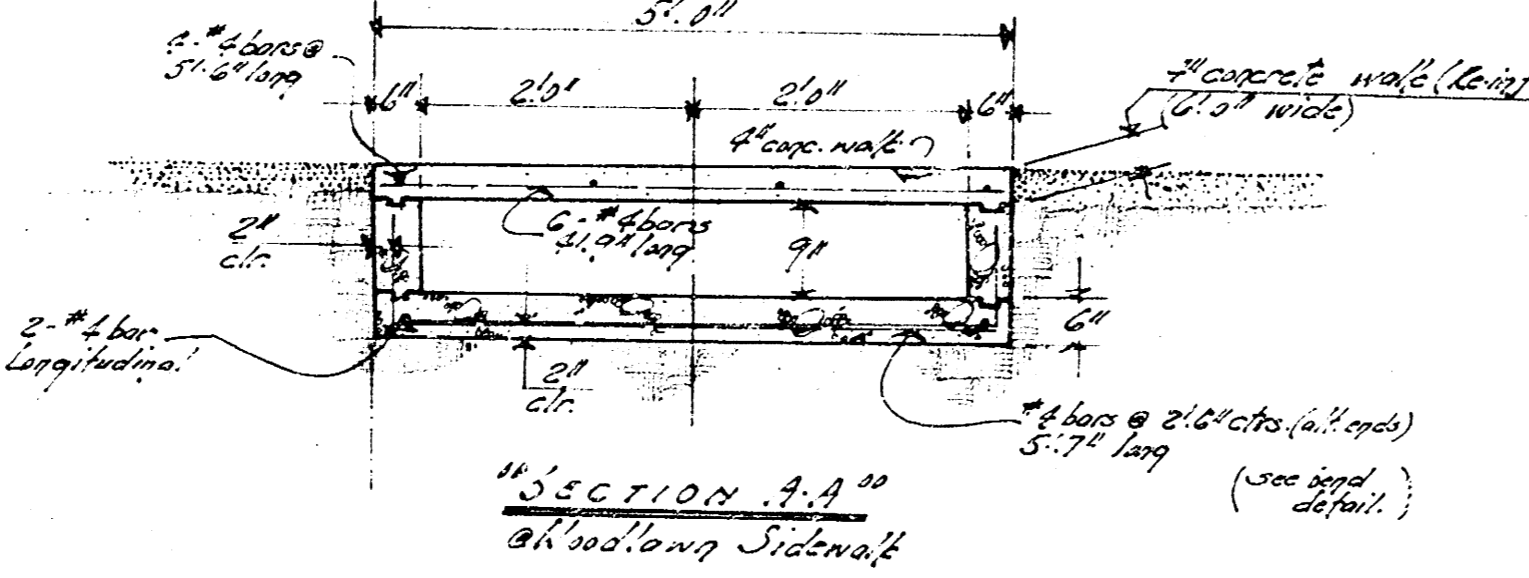
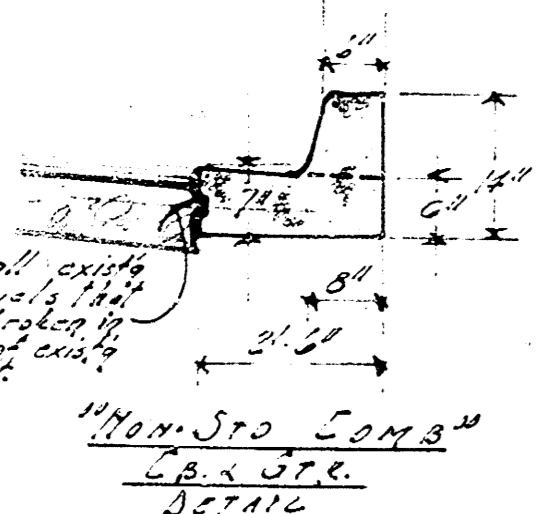


36" dia. 36" dia. flume south end of drive, east side Woodlawn Blvd
 36" dia. Castle Drive
 Intersection & alignment east of Woodlawn Blvd



"BILL OF MATERIALS"		
Quan.	Unit	Item
2300	cu ft	Concrete (excav)
50	cu yd	Gravel Excavation
40	cu yd	Backfill
345	lb	Reinforcing Steel
100	cu yd	Grass Seed
60	cu yd	Manhole Cover

"4" REINF. CONC. FLUME"
 Between Castle Drive and Woodlawn Blvd
 in "Melroy's Addition"
CITY OF WICHITA, KANSAS
 S.E. Smith City Engineer
 Date: 5/14/68 Private Engineer

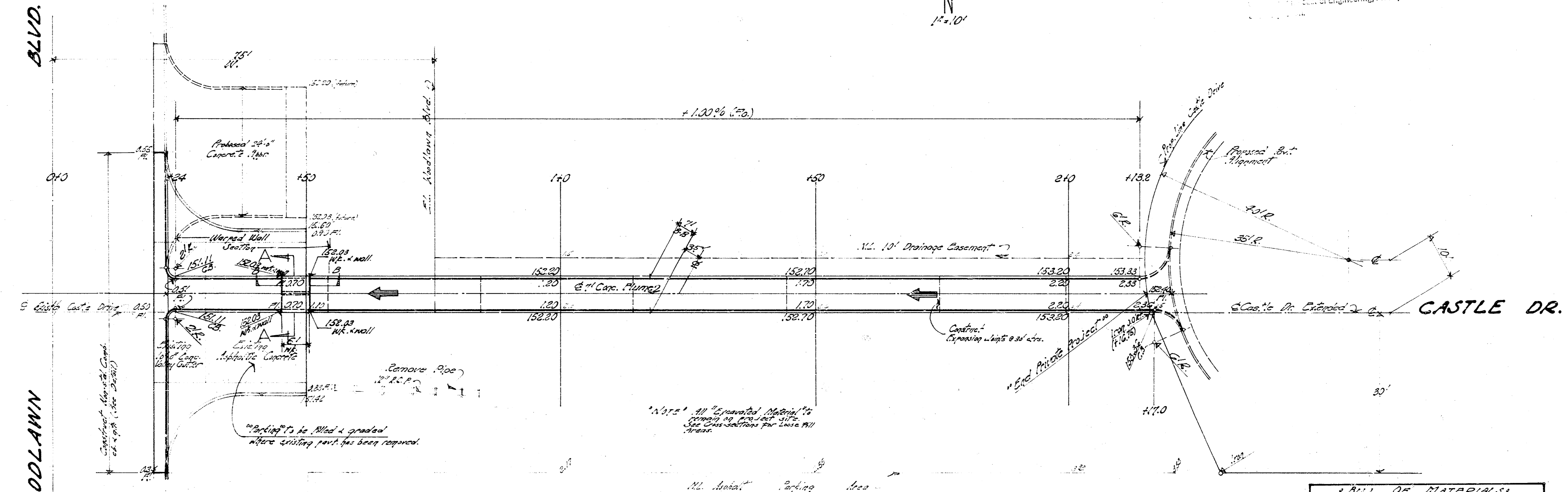


S.E. Smith
 City Engineer
 Date: 5/14/68

11/10/35
 11/10/35
 11/10/35

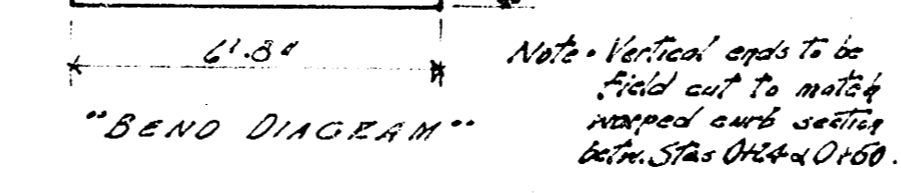
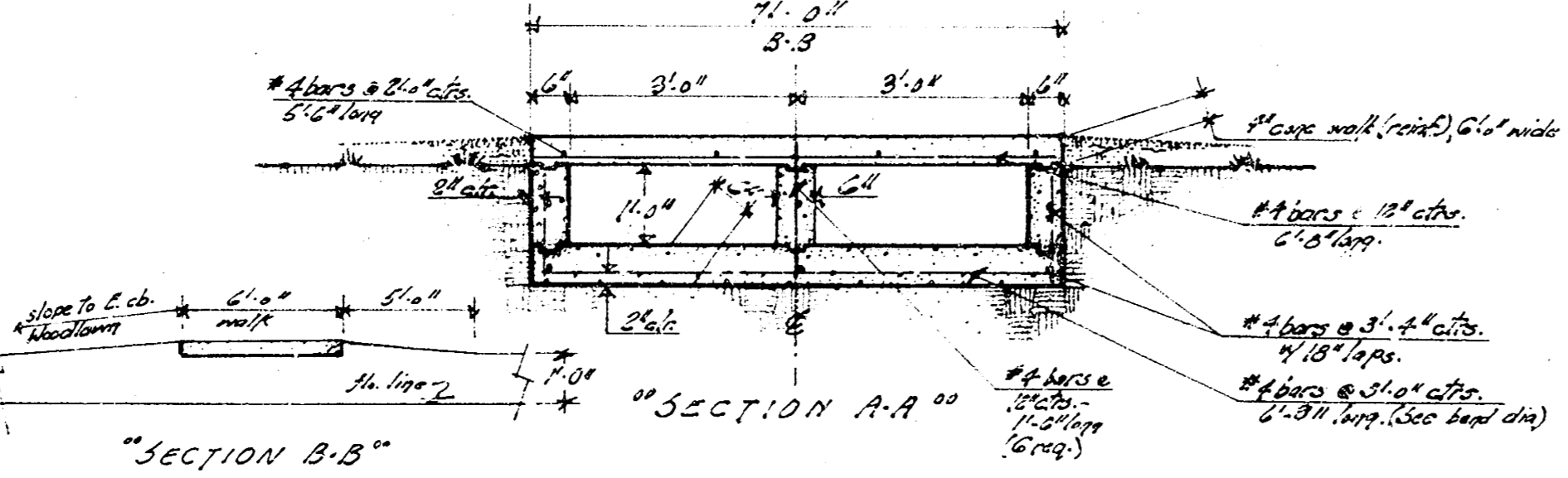
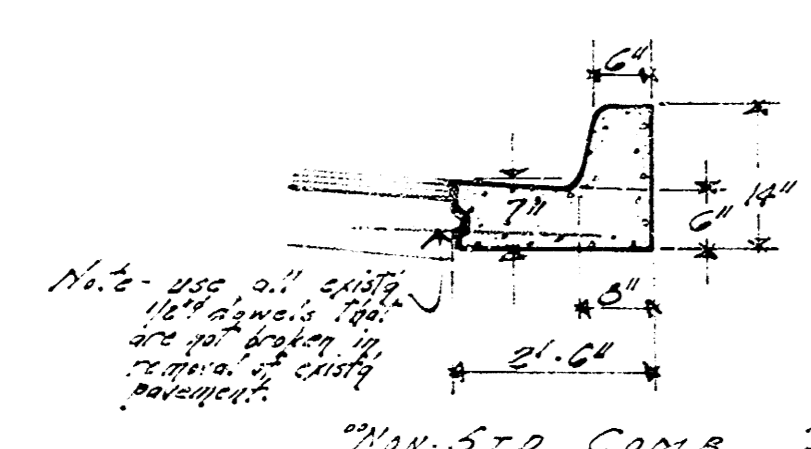
B.M. = 56.88 7' by 7' boxes North, East of Drive, East Side Woodlawn
 5' So. Castle Drive
 base line = starting East of E. Castle Drive

NOTE TO CONTRACTOR
 This project will be constructed under
 the supervision of the CITY ENGINEER
 conforming to the SPECIFICATIONS
 of the CITY OF WICHITA. The CON-
 TRACTOR shall reimburse the City of
 Wichita for the cost of Engineering Plans,
 etc.



BILL OF MATERIALS

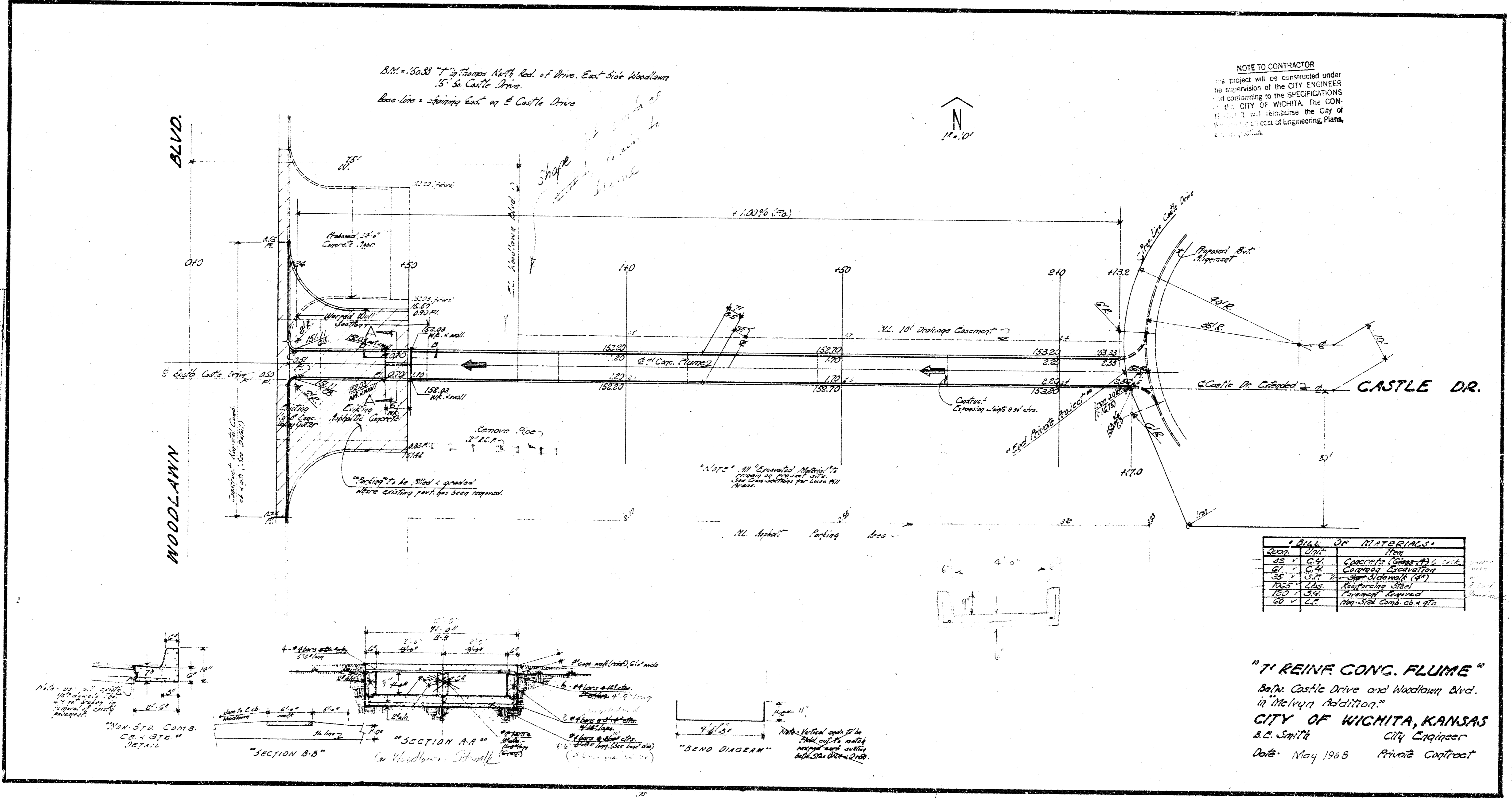
Item	Qty	Description
1000	1.00	Concrete (Class B)
50	5.00	Reinforcing Steel
1000	1.00	Formwork (sq. ft.)
1000	1.00	Excavation (cu. yd.)
1000	1.00	Backfill (cu. yd.)
1000	1.00	Gravel (cu. yd.)
1000	1.00	Other materials



"7' REINF. CONG. FLUME"
 Between Castle Drive and Woodlawn Blvd.
 in Melvyn Addition.
CITY OF WICHITA, KANSAS
 S. E. Smith City Engineer
 Date: May 1935 Private Contract

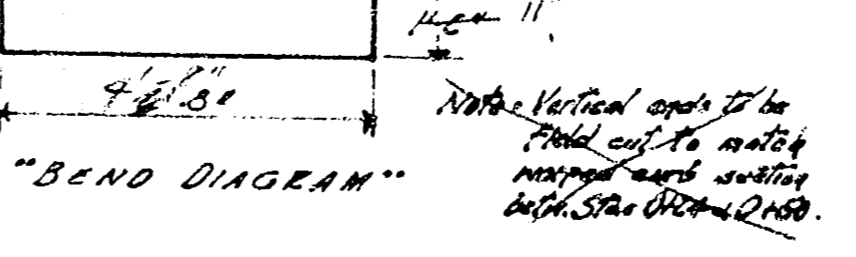
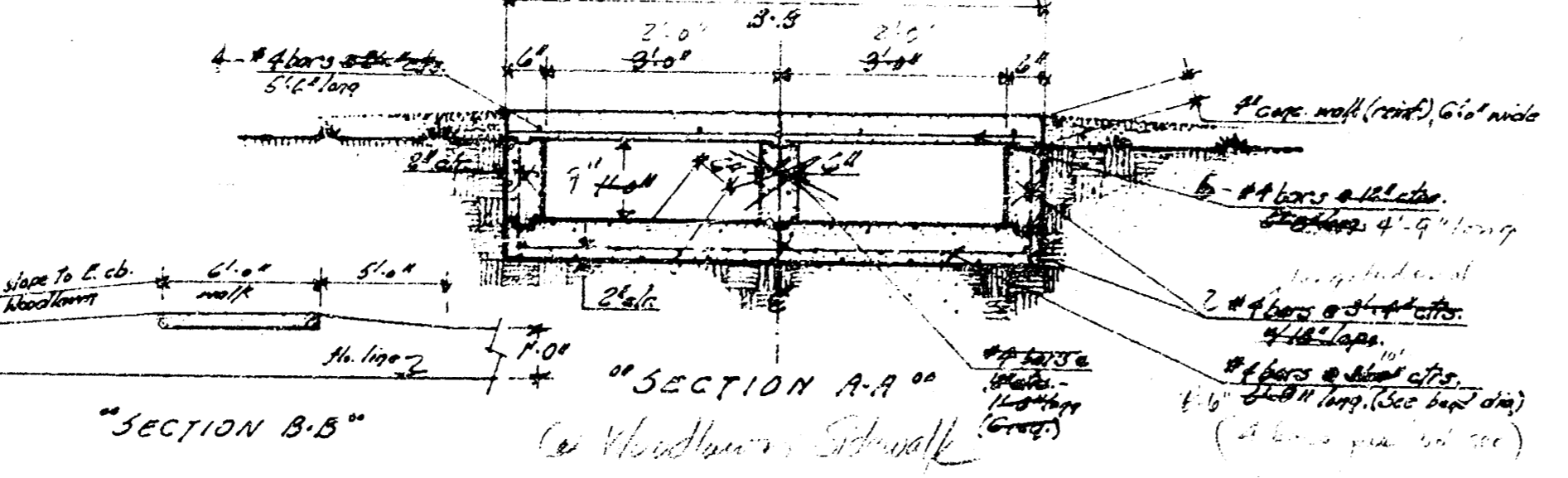
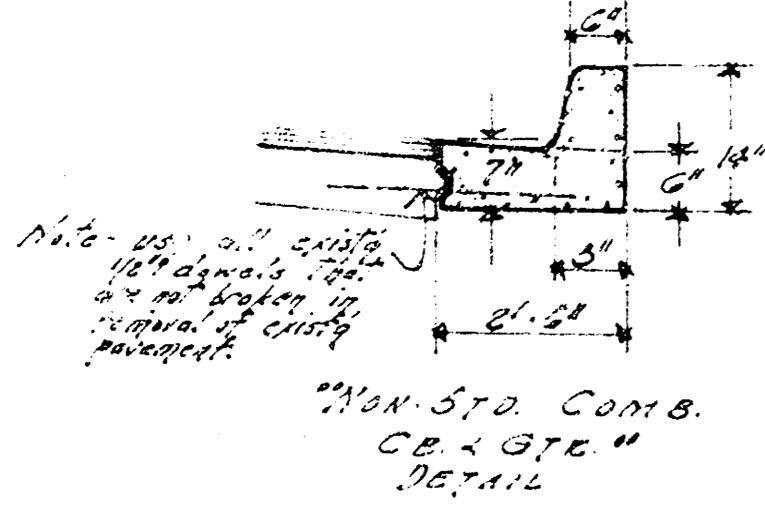
B.M. = 50.88 "Top of House North End of Drive, East Side Woodlawn Blvd.
 15' to Castle Drive.
 Base Line = Springing East of E. Castle Drive

NOTE TO CONTRACTOR
 This project will be constructed under the supervision of the CITY ENGINEER and conforming to the SPECIFICATIONS of the CITY OF WICHITA. The CONTRACTOR shall reimburse the City of Wichita for the cost of Engineering, Plans, and Printing.



BILL OF MATERIALS

QTY	UNIT	ITEM
52	CY	Concrete (incl. 4% adm.)
21	CS	Rebar (4\"/>



"7' REINF. CONG. FLUME"
 Betw. Castle Drive and Woodlawn Blvd.
 in Melvyn Addition.
CITY OF WICHITA, KANSAS
 A.E. Smith City Engineer
 Date: May 1968 Private Contract