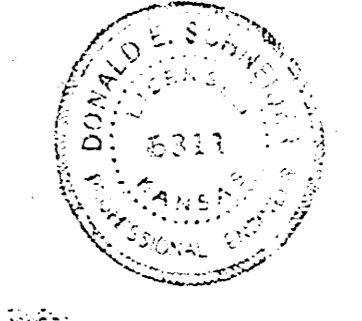


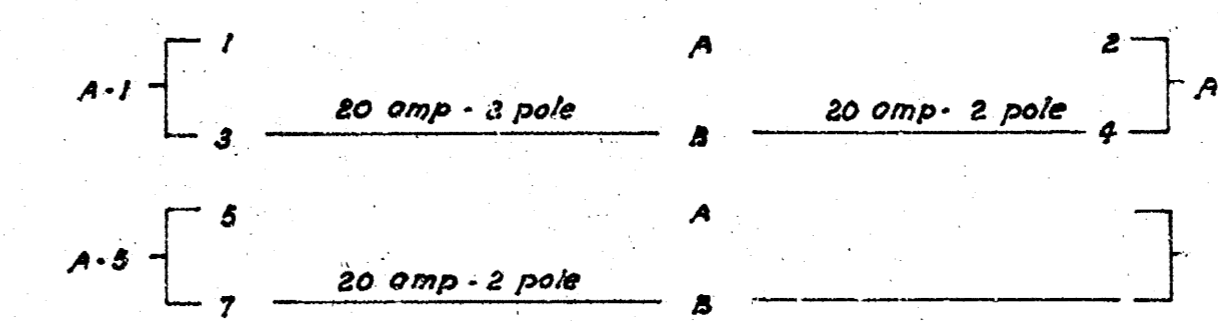
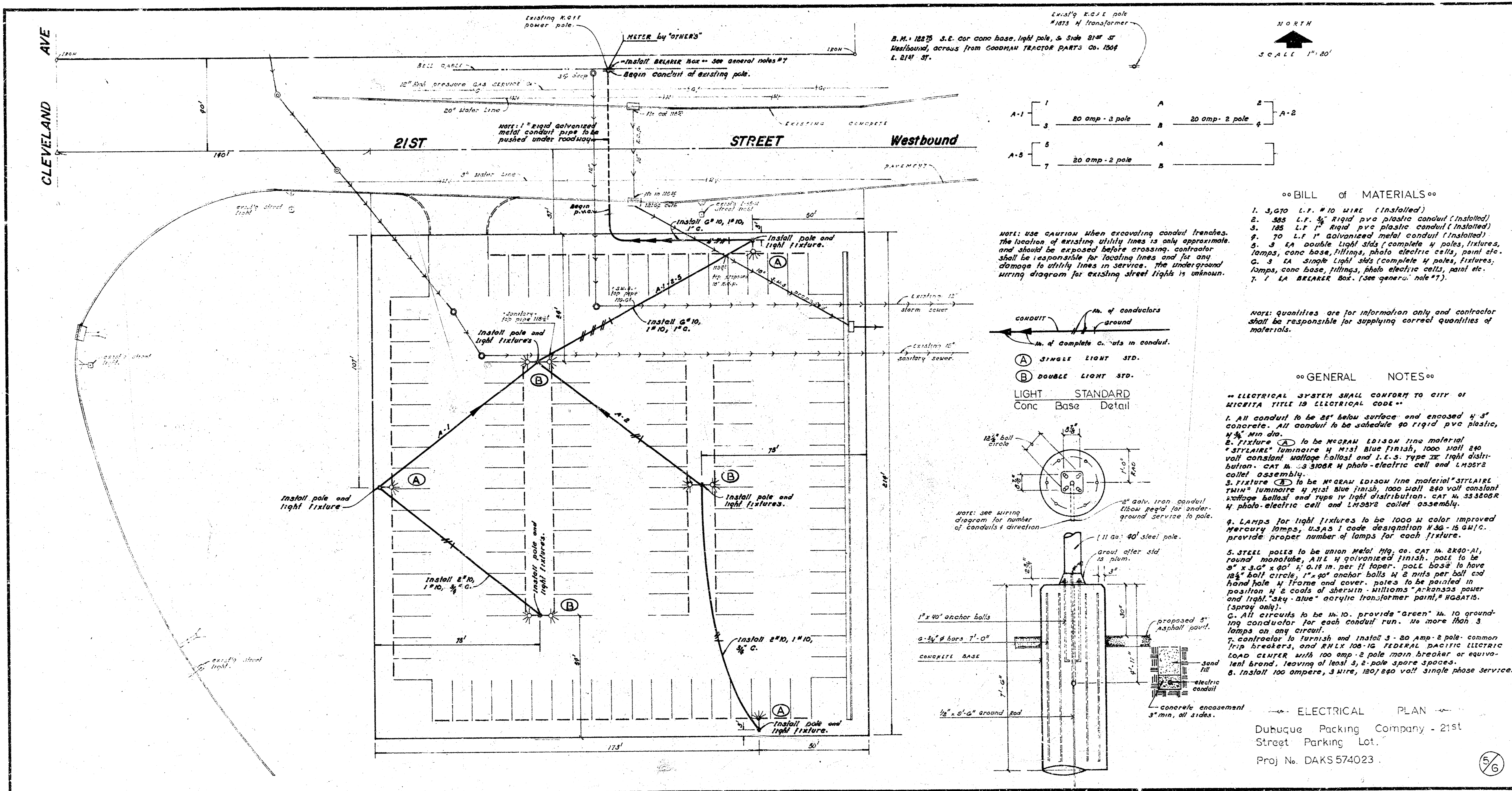
SHIRLEY GULLER  
City Engineer  
DUBUQUE



**DUBUQUE PACKING COMPANY -**  
**21st STREET PARKING LOT at**  
**I-35W Interchange.**

**CITY of WICHITA, KANSAS**  
 R.W. LINN CITY ENGINEER  
 DATE MAY 1974 Proj No DAKS 574023

1/6



“BILL OF MATERIALS”

1. 3,070 L.F. #10 WIRE (installed)
2. 385 L.F. 3/4" rigid pvc plastic conduit (installed)
3. 185 L.F. 1" rigid pvc plastic conduit (installed)
4. 70 L.F. 1" galvanized metal conduit (installed)
5. 3 EA double light std (complete w poles, fixtures, lamps, cone base, fittings, photo electric cells, paint etc)
6. 3 EA single light std (complete w poles, fixtures, lamps, cone base, fittings, photo electric cells, paint etc)
7. 1 EA BREAKER BOX. (see gener. note #7)

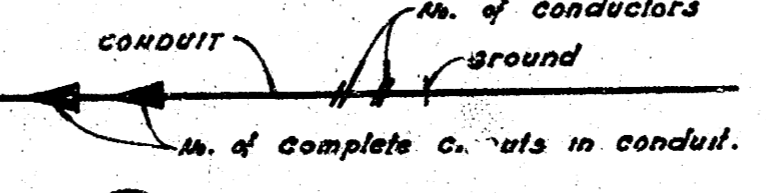
NOTE: USE CAUTION when excavating conduit trenches. The location of existing utility lines is only approximate and should be exposed before crossing. Contractor shall be responsible for locating lines and for any damage to utility lines in service. The underground wiring diagram for existing street lights is unknown.

NOTE: QUANTITIES ARE FOR INFORMATION ONLY AND CONTRACTOR SHALL BE RESPONSIBLE FOR SUPPLYING CORRECT QUANTITIES OF MATERIALS.

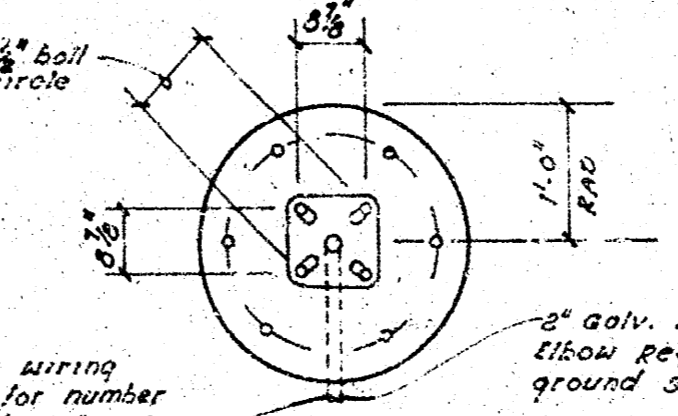
“GENERAL NOTES”

“ELECTRICAL SYSTEM SHALL CONFORM TO CITY OF MICRITA TITLE 19 ELECTRICAL CODE”

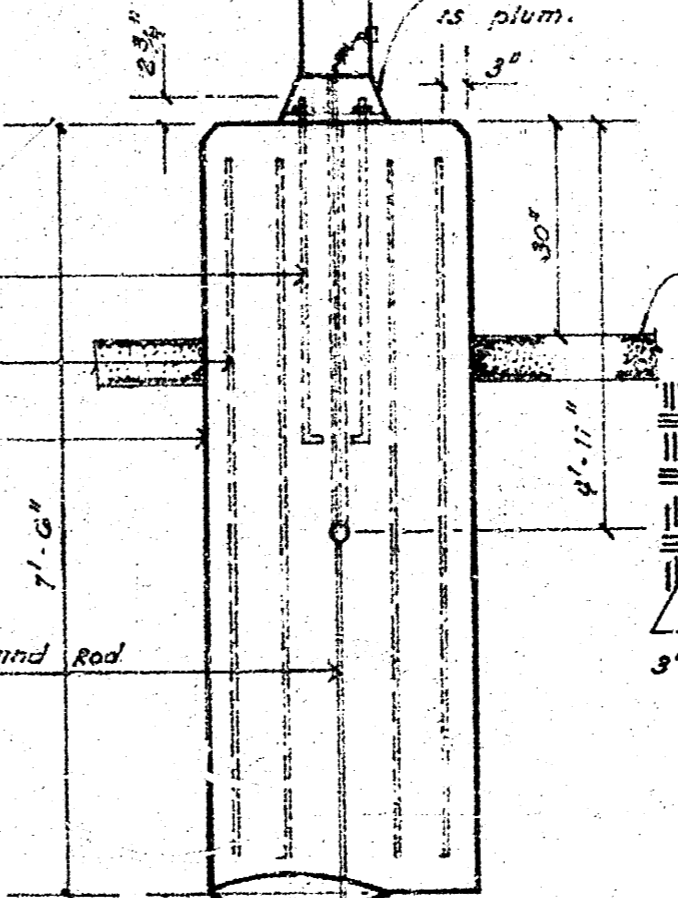
1. All conduit to be 2' below surface and exposed w 3" concrete. All conduit to be schedule 40 rigid pvc plastic, 1/2" min dia.
2. Fixture (A) to be GEORGE LANSON fine material "STYLARK" luminaire w mist blue finish, 1000 watt 240 volt constant voltage ballast and I.L.S. type XX light distribution. CAT # 33108R w photo-electric cell and LMS222 collet assembly.
3. Fixture (B) to be GEORGE LANSON fine material "STYLARK TWIN" luminaire w mist blue finish, 1000 watt 240 volt constant voltage ballast and type IV light distribution. CAT # 333108R w photo-electric cell and LMS222 collet assembly.
4. LAMPS for light fixtures to be 1000 w color improved mercury lamps, type I code designation #36-15 4110. provide proper number of lamps for each fixture.
5. STEEL poles to be union metal mfg. co. cat # 2K90-A1, round monotube, A1E w galvanized finish. pole to be 6" x 3.0" x 40' h, 0.18 in. per ft taper. pole base to have 1 1/2" ball circle, 1" dia anchor bolts w 2 nuts per bolt and hand hole w frame and cover. poles to be painted in position w 2 coats of Sherwin-Williams "arkansas power and light" grey "acrylic transformer paint" #868715. (spray only).
6. All circuits to be w. 10. provide "green" w. 10 ground-ing conductor for each conduit run. no more than 3 lamps on any circuit.
7. contractor to furnish and install 3 - 20 amp 2 pole common trip breakers, and 200 amp 100 lb FEDERAL PACIFIC ELECTRIC LOAD CENTER with 100 amp 2 pole main breaker or equivalent brand, leaving of least 3, 2 pole spare spaces.
8. install 100 ampere, 3 wire, 120/240 volt single phase service.



- (A) SINGLE LIGHT STD.
  - (B) DOUBLE LIGHT STD.
- LIGHT STANDARD  
Conc Base Detail



NOTE: SEE WIRING diagram for number of conductors & direction



ELECTRICAL PLAN

Duquesne Packing Company - 21st Street Parking Lot.  
Proj No. DAKS 574023.



