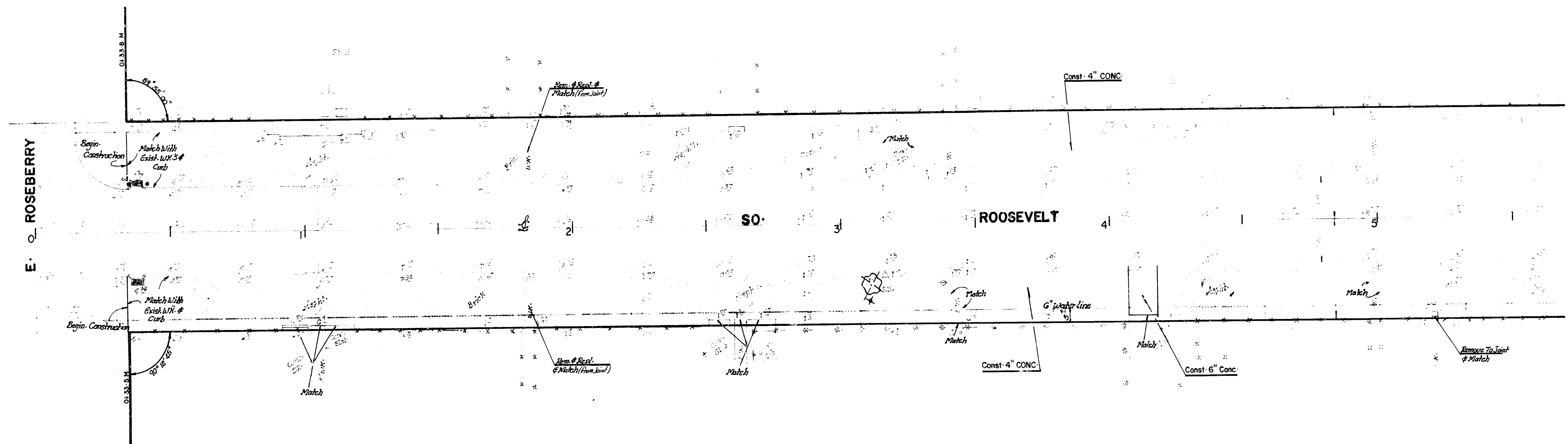
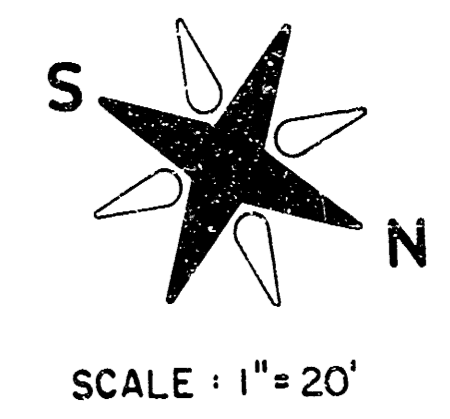
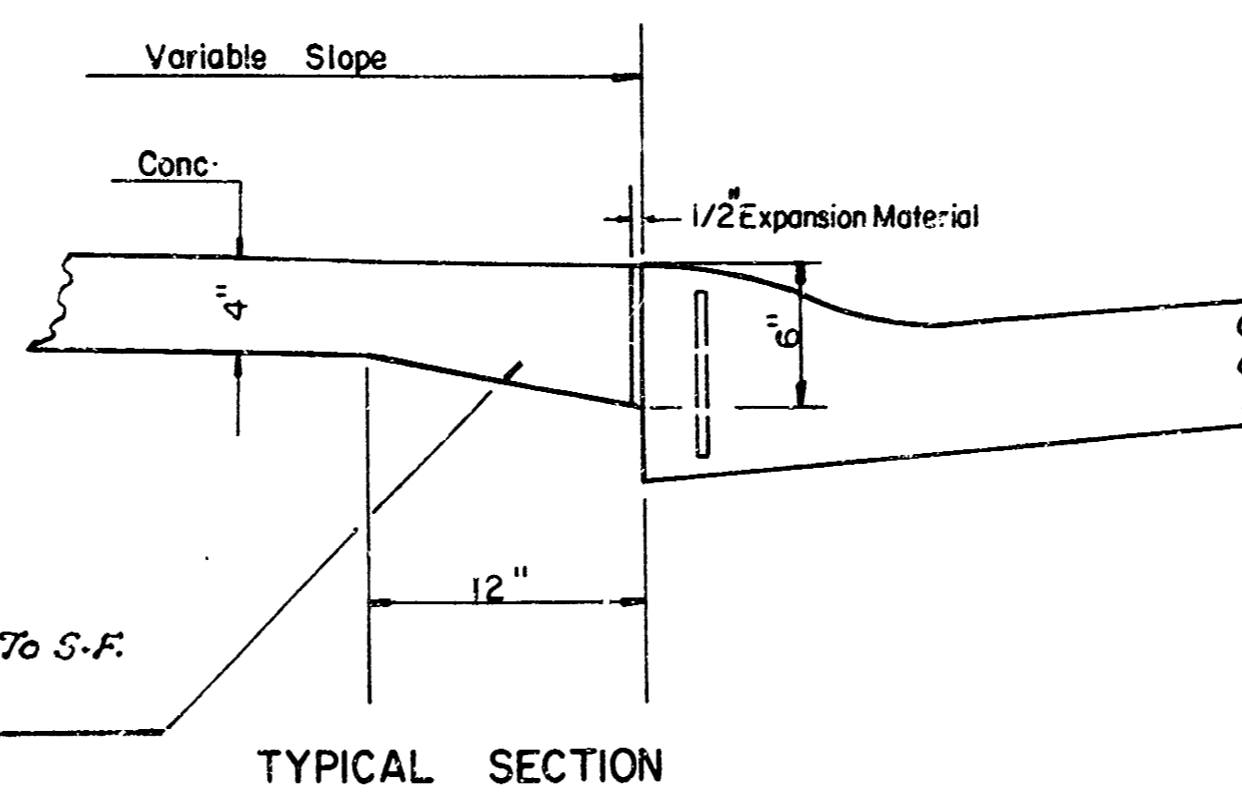
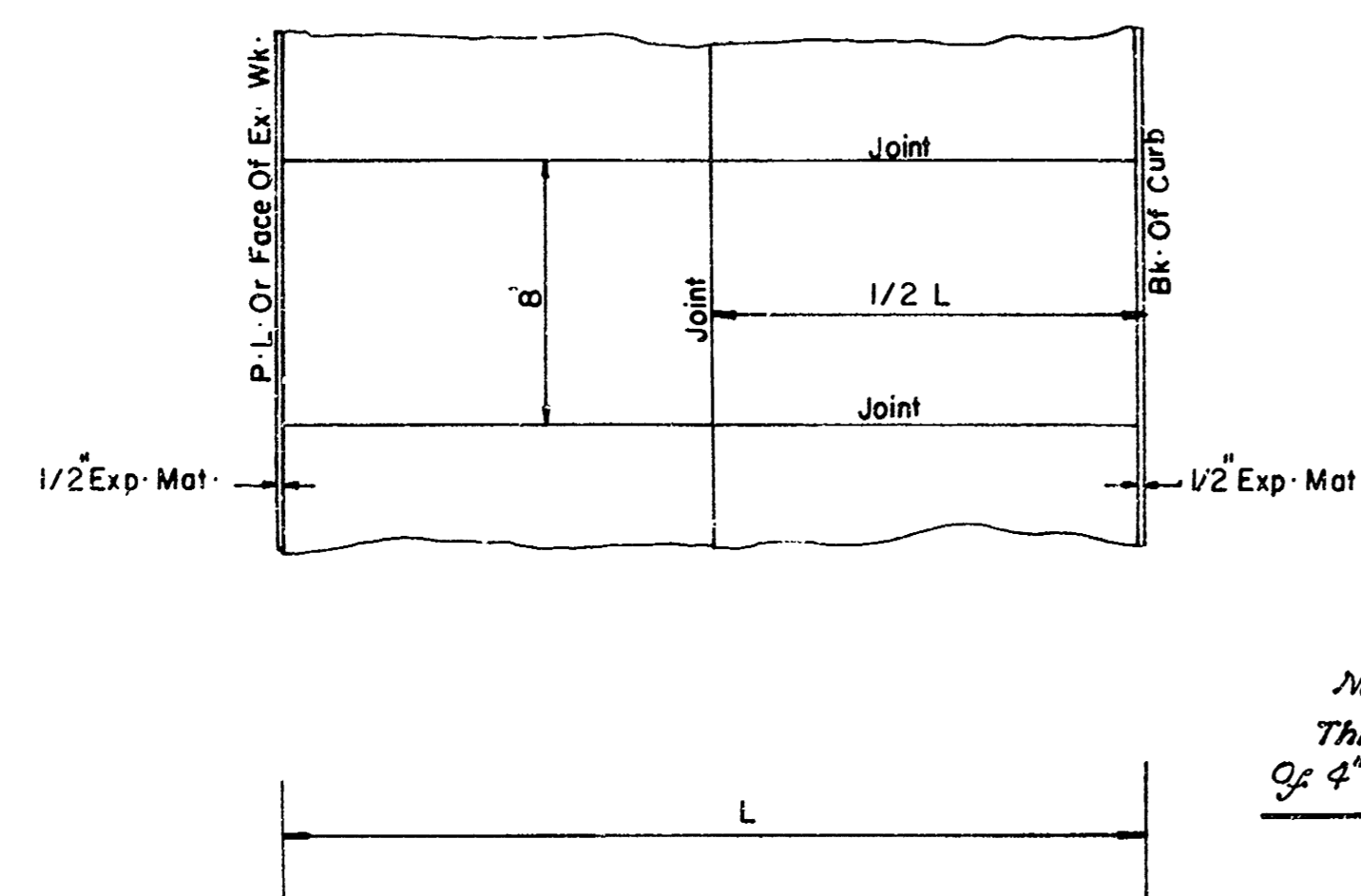


B.M. = 114-25 Brass Cap S.W. Cor RCBC, Cessna, Dry Creek (Stamped 1301-65)
 B.M. = 113-22 " " N.E. " " Roseberry " " (" 1300-62)
 B.M. = 117-20 S.E. Cor. Bottom Step 3790 Roseberry
 B.L. Is 2' W. Of C.L.



Project: Cessna
 Date: 11/1/62
 Sheet: 1



Note:
 Thickening Is Incidental To S.F.
 Of 4\"/>

Note:

1. Match 4\"/>

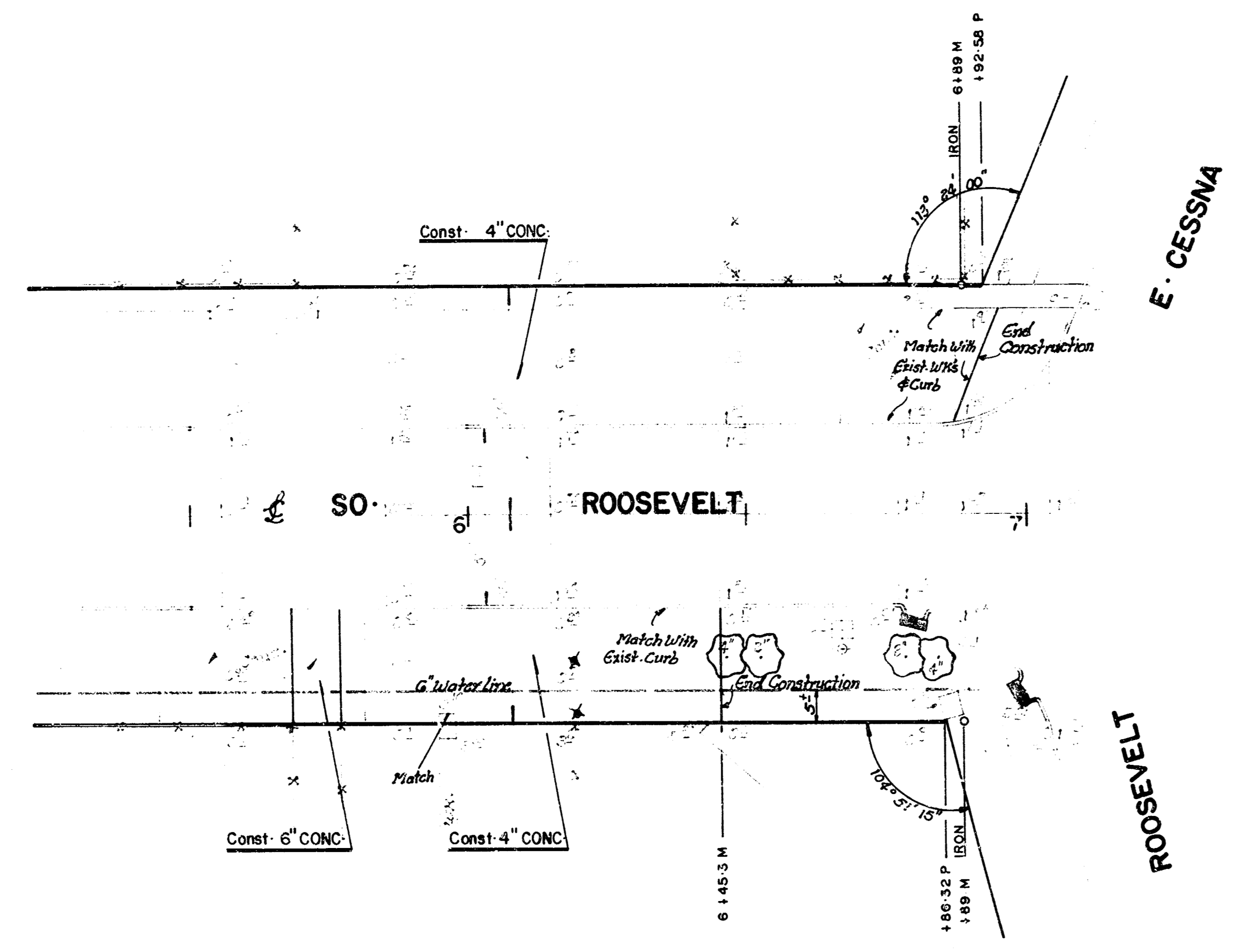
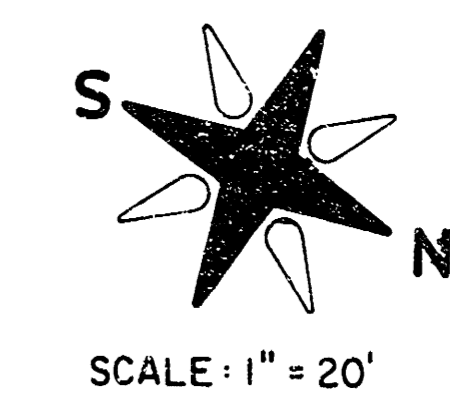
So. Roosevelt City Of Wichita, Kansas

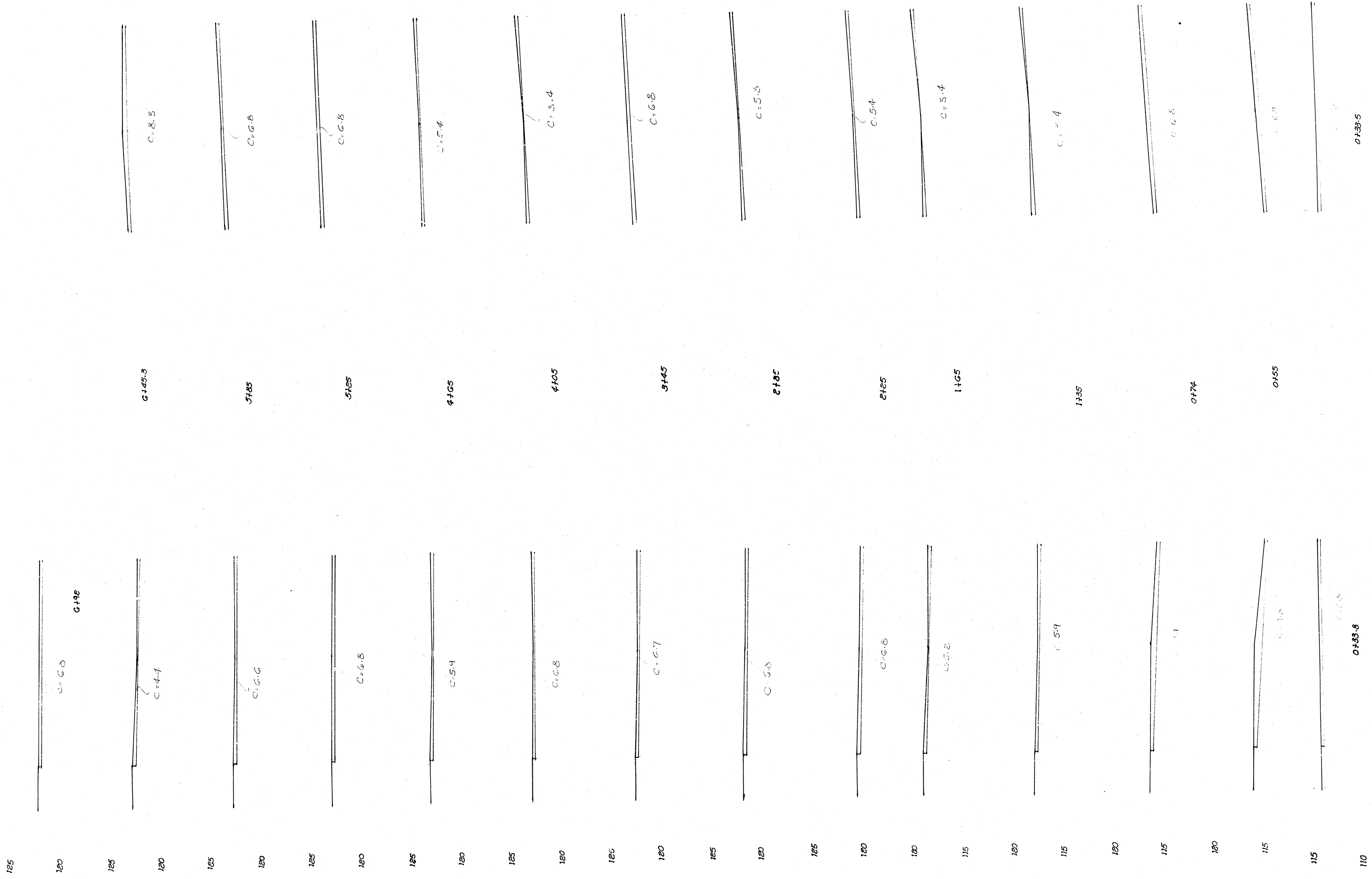
R. W. Bruggeman Director Of Engr./City Engineer

Pro. No. 818-58-192-50119-430-000-000

Construction Of Parking Pads On Roosevelt Between
 Cessna & Roseberry

FILMED FROM THE BEST
 AVAILABLE COPY





So. Roosevelt
 Proj. No. 616-56-192-50119-430-000-000

16 10 4 0 $\frac{3}{3}$ $\frac{3}{3}$

FILMED FROM THE BEST AVAILABLE COPY.....