

Bakerman  
Island

S 28° 25' E	3.15 Chains
S 45° 25' E	2.01
S 71° 01' W	8.85
S 56° 15' W	1.25
S 34° 37' W	2.20
S 41° 47' W	2.50
S 54° 31' W	5.52
S 59° 52' W	7.70
S 41° 41' W	1.93
S 75° 44' W	1.07

The contents as delineated in Lat. 34. 1/2 is given and goes for one hundredth (1/100) acre.

The island is very low and sandy soil high, no land is and but a small quantity of water and a few small trees.

It is situated to the S. of Victoria, in Queen's County, Ontario, and is upon the immediate left bank of the Ontario river close to the island its name.

The only important part of the island is a small wooded tract about 10 x 15 acres more or less high.

It is worth bearing in mind that the

The survey was made with a theodolite and in order to determine the position of the monument a traverse was run from the right of the beach to the monument which is located in a line with the monument and the monument was found to be 11' 15" East.

At the bearing of the 15° S. commenced the survey at the monument corner stone found on the right bank of the Ontario, where the river is intersected by the eastern boundary line of Township 19, Range 3, 4th E. of the 5th Range meridian in the State of Ontario.

Thence a line variation 11' 15" E.

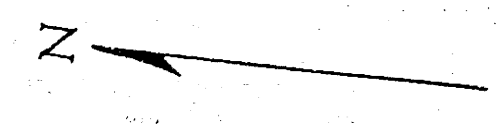
S 54° 51' E. 10 chains on the right bank of the Ontario river and from which a meander corner line 20 x 25 1/2 inches 208-11 in in the ground on the N.W. Cor. of the island bears S 34° 35' E.

Thence in same course S 52° 52' E. 10 chains further in a line line to terminate from the meander corner on the island is not visible from the meander corner where the survey was begun.

The meander corner on the island bears from the center end of base line N 10° 51' E. and from which two bearings and base line in triangulation the bearing and distance from north bearing to meander corner on island is found to be S 70° 01' E. 19.15 chains.

Thence to run on the island with the meanderage

S 35° 25' E	2.07 Chains
S 45° 25' E	7.63
S 59° 35' E	3.49
S 41° 41' E	2.17
S 15° 25' E	5.52
S 1° 25' E	3.46
S 41° 35' E	2.09

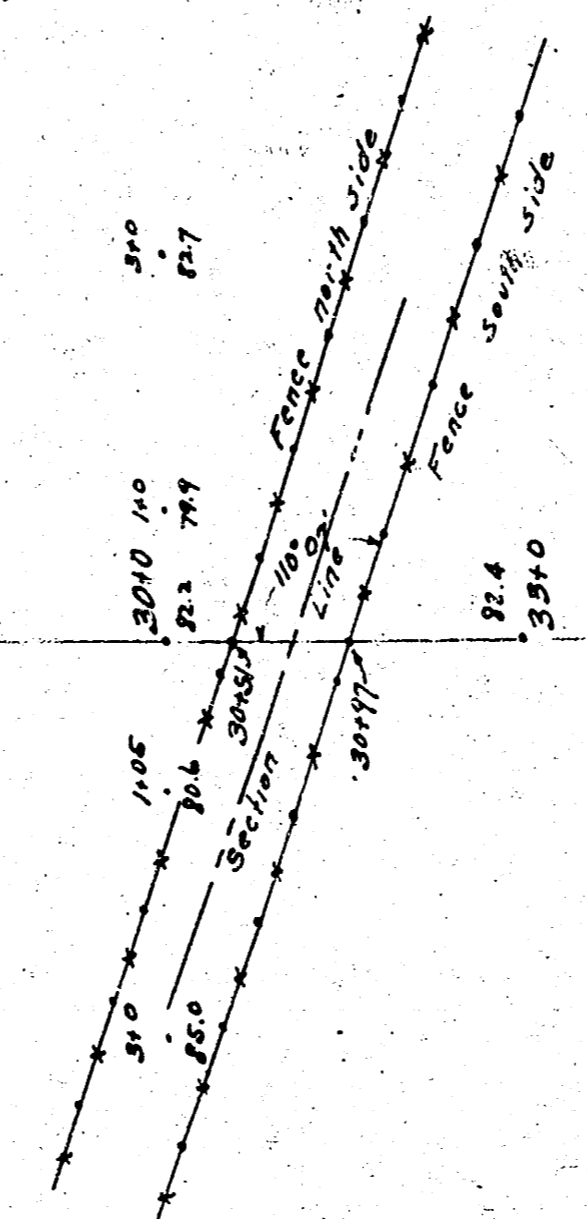
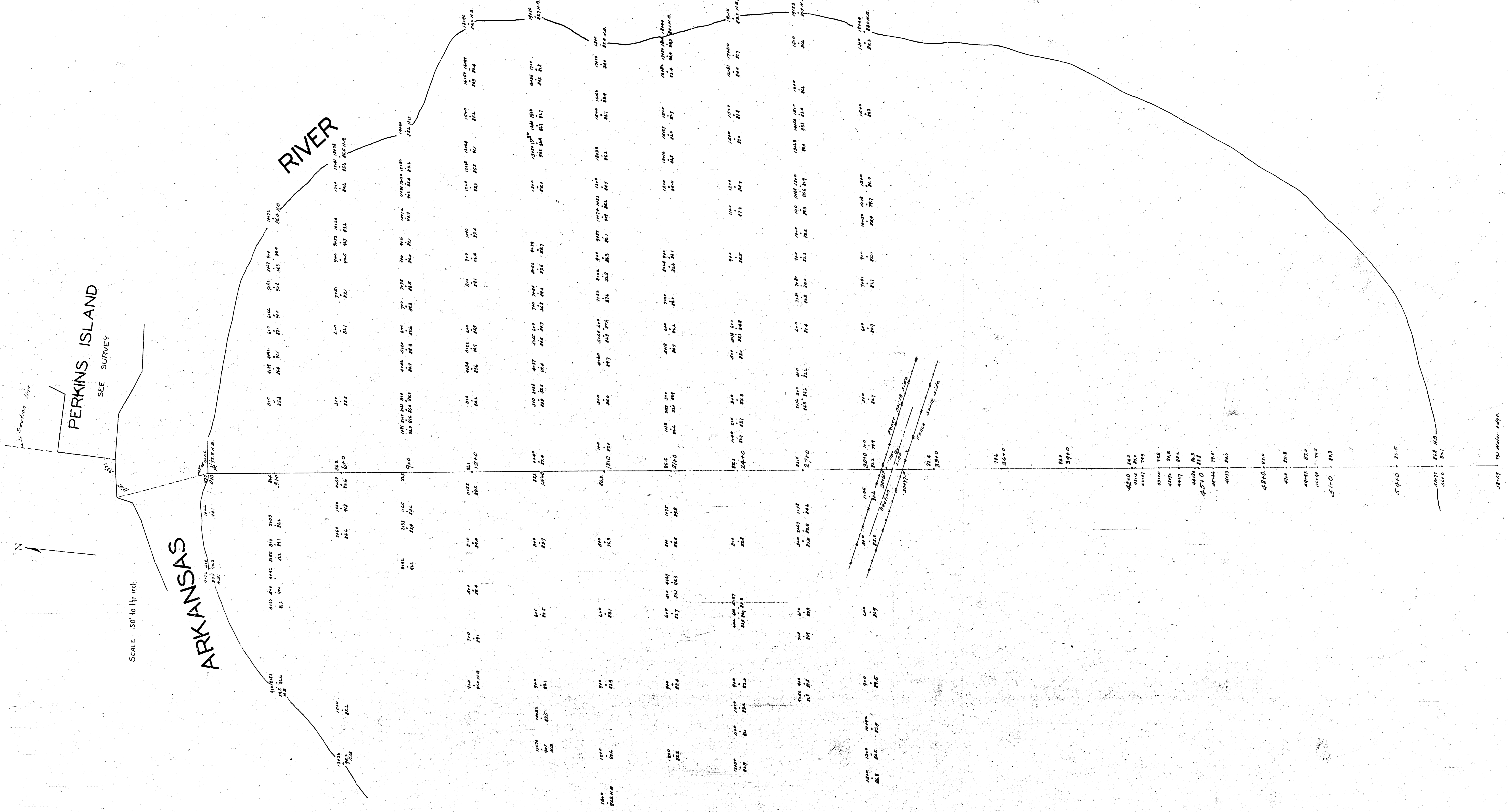


PERKINS ISLAND  
SEE SURVEY

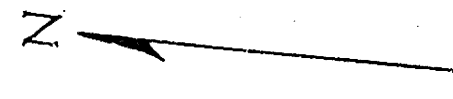
SCALE: 150 to 1 in

ARKANSAS

RIVER



SEE SURVEY

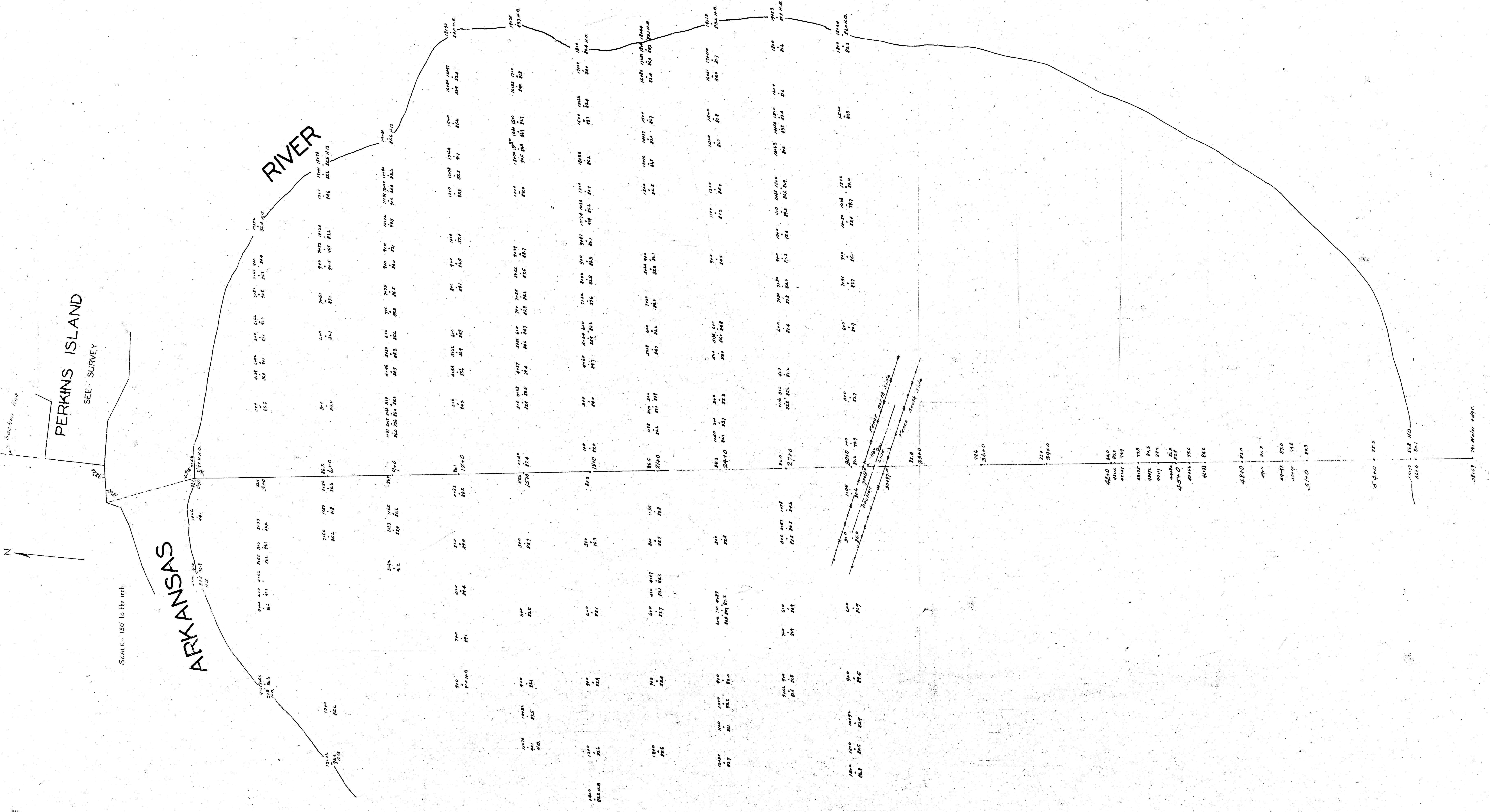


SCALE: 150 to 1 in.

PERKINS ISLAND  
SEE SURVEY

ARKANSAS

RIVER



Numbered edge