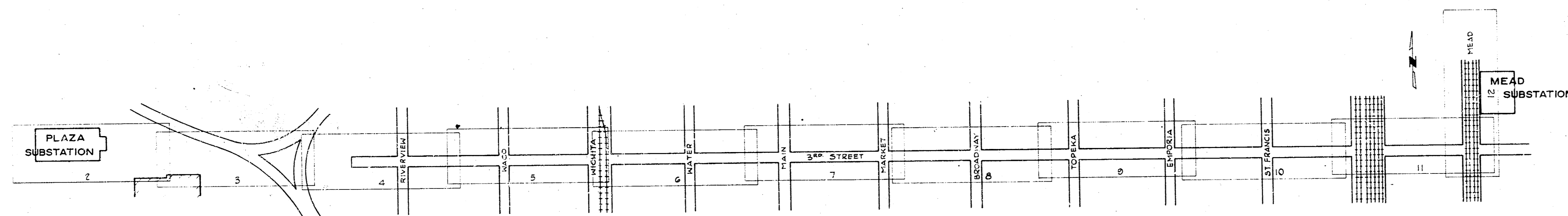
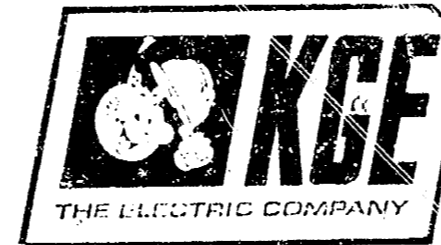


K G & E, THE ELECTRIC COMPANY

RALPH FIEBACH, P.E. President

ELMER S. HALL, P.E. Vice President, Operations

JOHN H. HANSBERRY, P.E. Chief Engineer



69 KV UNDERGROUND TRANSMISSION LINE PLAZA SUBSTATION TO MEAD SUBSTATION WICHITA, KANSAS

SEPTEMBER, 1969

Plans Prepared by:
R. S. DELAMATER & ASSOCIATES
Consulting Engineers

LEGEND:

- SURVEY ϵ & P.O.T.'s
- ϵ CABLE PIPE
- WATER LINE
- SANITARY SEWER
- STORM SEWER
- GAS LINE (CITIES SERVICE)
- GAS LINE (ARKLA GAS)
- K.G. & E. U.G. LINES
- TELEPHONE CABLES, U.G.

- THIMBLE (Survey Monument)
- MANHOLE - SAN. or ST. SEW.
- MANHOLE WITH GRATE
- TRAFFIC SIGNAL
- VALVE - GAS or WATER
- CURB INLET
- POWER POLE
- TELEPHONE POLE

*A. L. H. IT
7/10/69
10-10-70*

PLAZA-MEAD 69KV U.G. LINE
TITLE SHEET & INDEX MAP

NO.	DATE	REVISION	BY	CK	APP	NO.	DATE	REVISION	BY	CK	APP	NO.	DATE	REVISION	BY	CK	APP

DR. P.P. _____ DATE _____

CK. _____ DATE _____

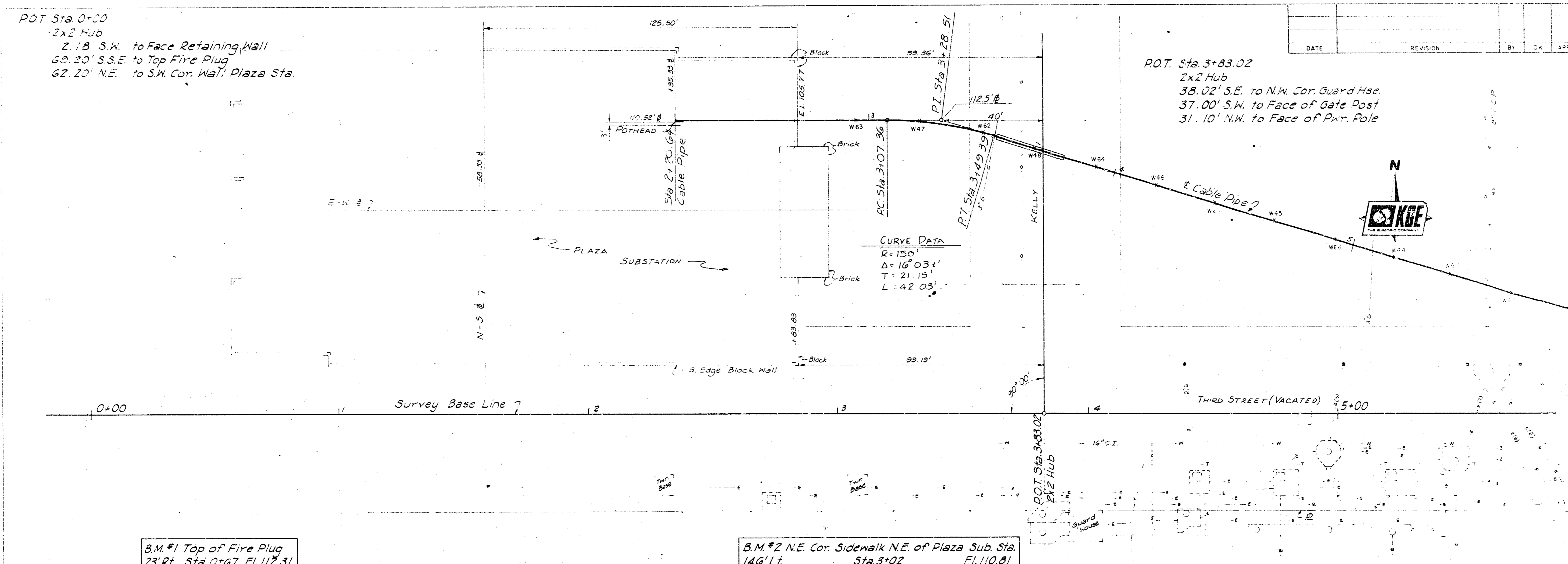
APP. _____ DATE _____

ENGINEER: J.H. HANSBERRY

SCALE: 1" = 100'

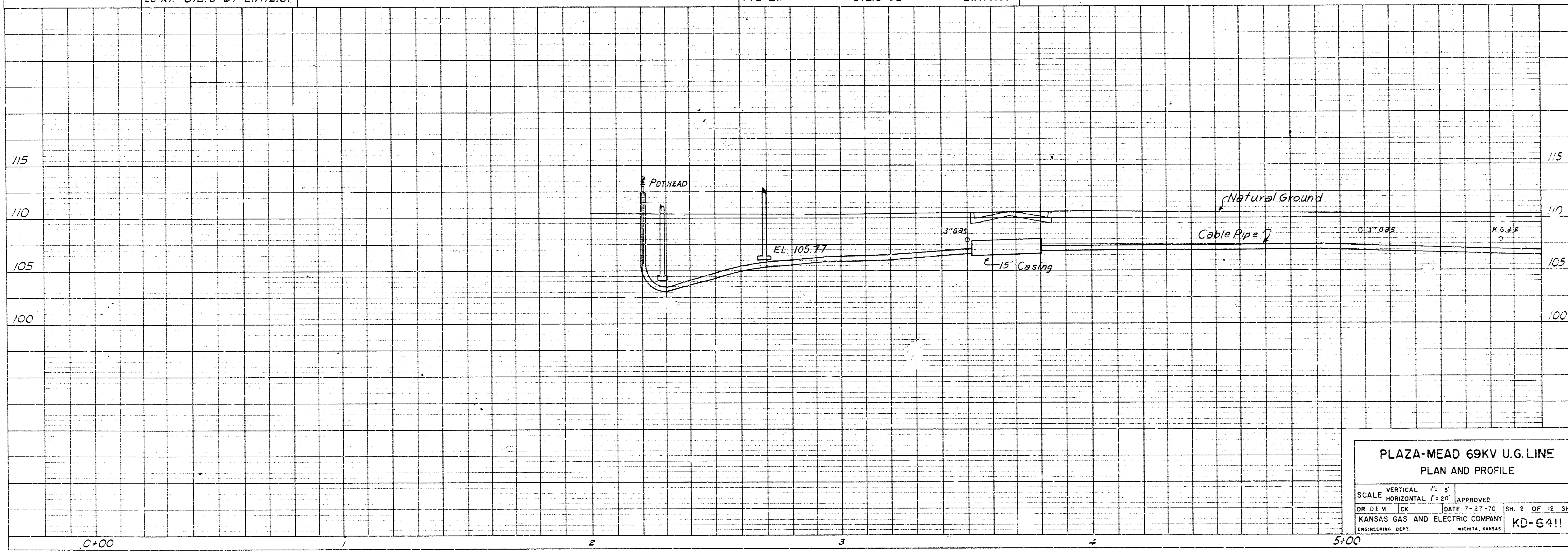
KANSAS GAS AND ELECTRIC COMPANY

KD-6411



B.M.#1 Top of Fire Plug
23' Rt. Sta. 0+67 El. 112.31

B.M.#2 N.E. Cor. Sidewalk N.E. of Plaza Sub. Sta.
146' Lt. Sta. 3+02 El. 110.81



**PLAZA-MEAD 69KV U.G. LINE
PLAN AND PROFILE**

VERTICAL SCALE: 1" = 5'
HORIZONTAL SCALE: 1" = 25'

APPROVED: [Signature]
DATE: 7-27-70 SH. 2 OF 12 SHETS

KANSAS GAS AND ELECTRIC COMPANY
ENGINEER: [Signature] KGE-6411

The undersigned hereby certifies that the above is a true and correct copy of the original as shown to him by the engineer in charge of the project.

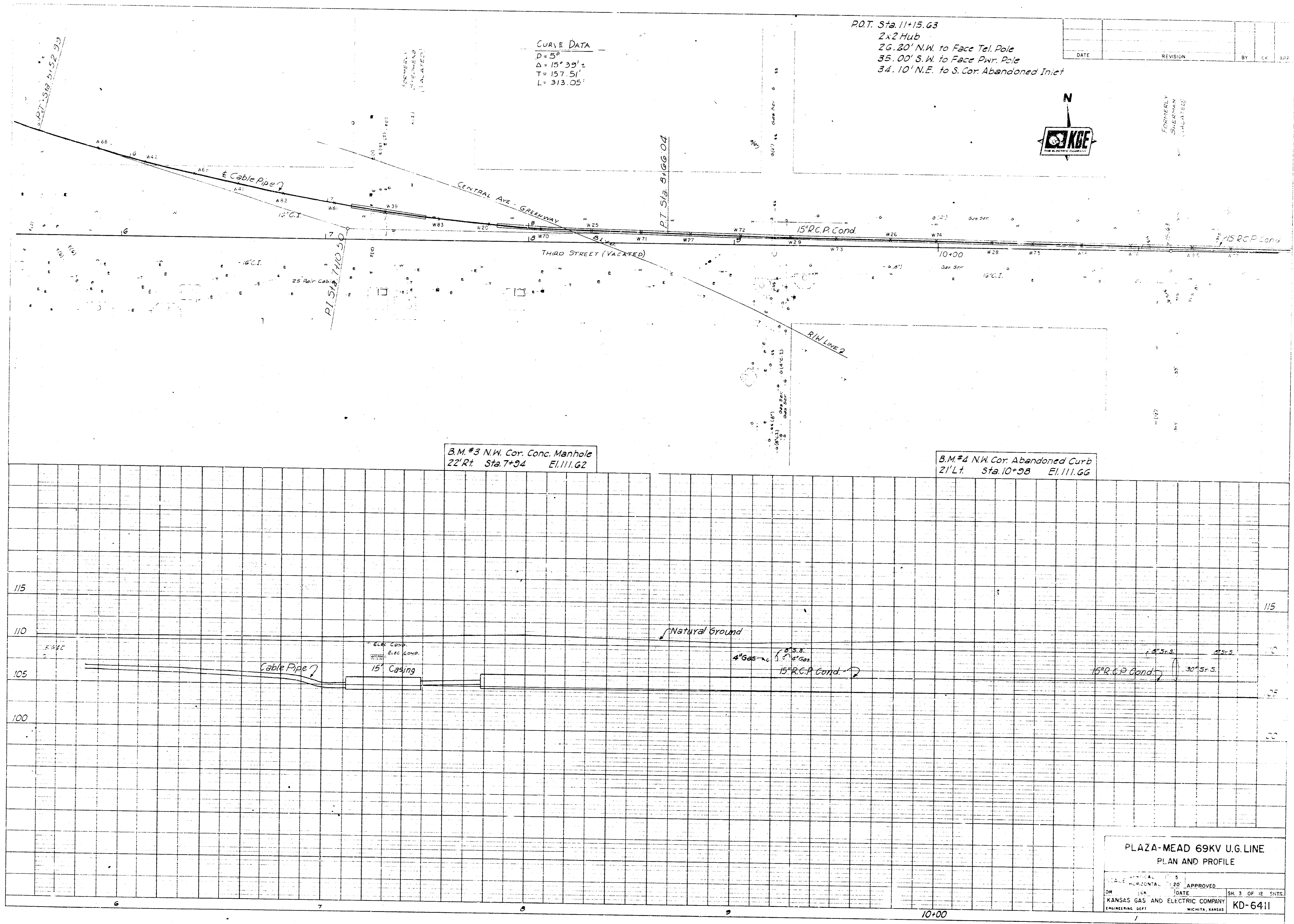
I hereby certify that the above is a true and correct copy of the original as shown to me by the engineer in charge of the project.

The undersigned hereby certifies that the above is a true and correct copy of the original as shown to him by the engineer in charge of the project.

I hereby certify that the above is a true and correct copy of the original as shown to me by the engineer in charge of the project.

The pipe in which this cable is installed is covered with a half-inch walling of concrete to provide the necessary protection. Do not remove the pipe at any point unless you are authorized to do so. If you are authorized to do so, you must first notify the engineer in charge of the project. The pipe is also covered with a half-inch walling of concrete to provide the necessary protection. Do not remove the pipe at any point unless you are authorized to do so. If you are authorized to do so, you must first notify the engineer in charge of the project.

Yours very truly,
[Signature]
[Name]
[Title]



CURVE DATA
 D = 58'
 Δ = 151° 33' ±
 T = 157.51'
 L = 313.05'

P.O.T. Sta. 11+15.63
 2x2 Hub
 26.20' N.W. to Face Tel. Pole
 35.00' S.W. to Face Pwr. Pole
 34.10' N.E. to S. Cor. Abandoned Inlet



B.M.#3 N.W. Cor. Conc. Manhole
 22' Lt. Sta. 7+34 El. 1111.62

B.M.#4 NW Cor. Abandoned Curb
 21' Lt. Sta. 10+38 El. 1111.66

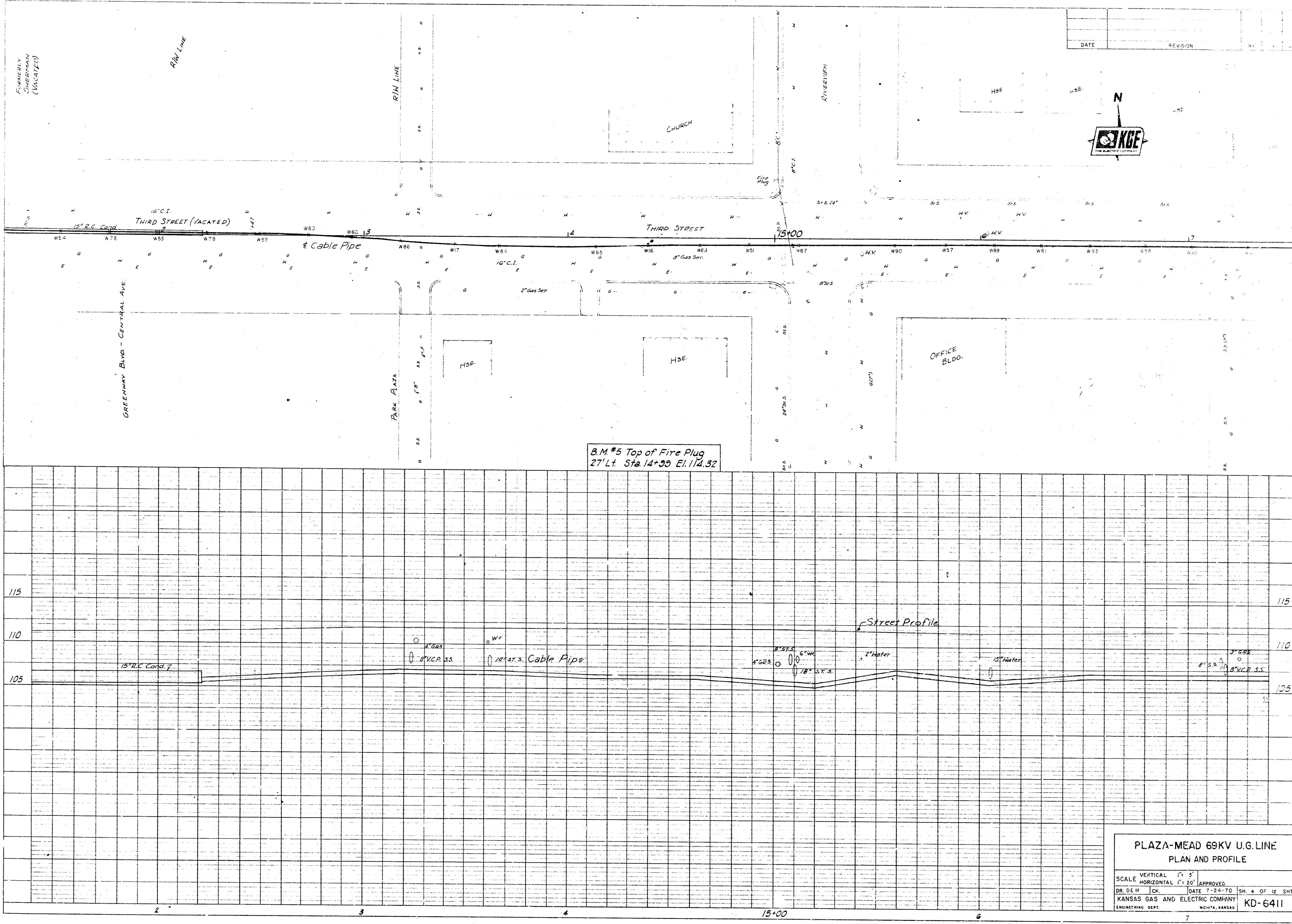
PLAZA-MEAD 69KV U.G. LINE
 PLAN AND PROFILE

DATE	REVISION	BY	CHK	APP

APPROVED: _____
 DATE: _____
 KANSAS GAS AND ELECTRIC COMPANY
 ENGINEERING DEPT. WICHITA, KANSAS

SK. 3 OF 12 SHEETS
 KD-6411

10+00



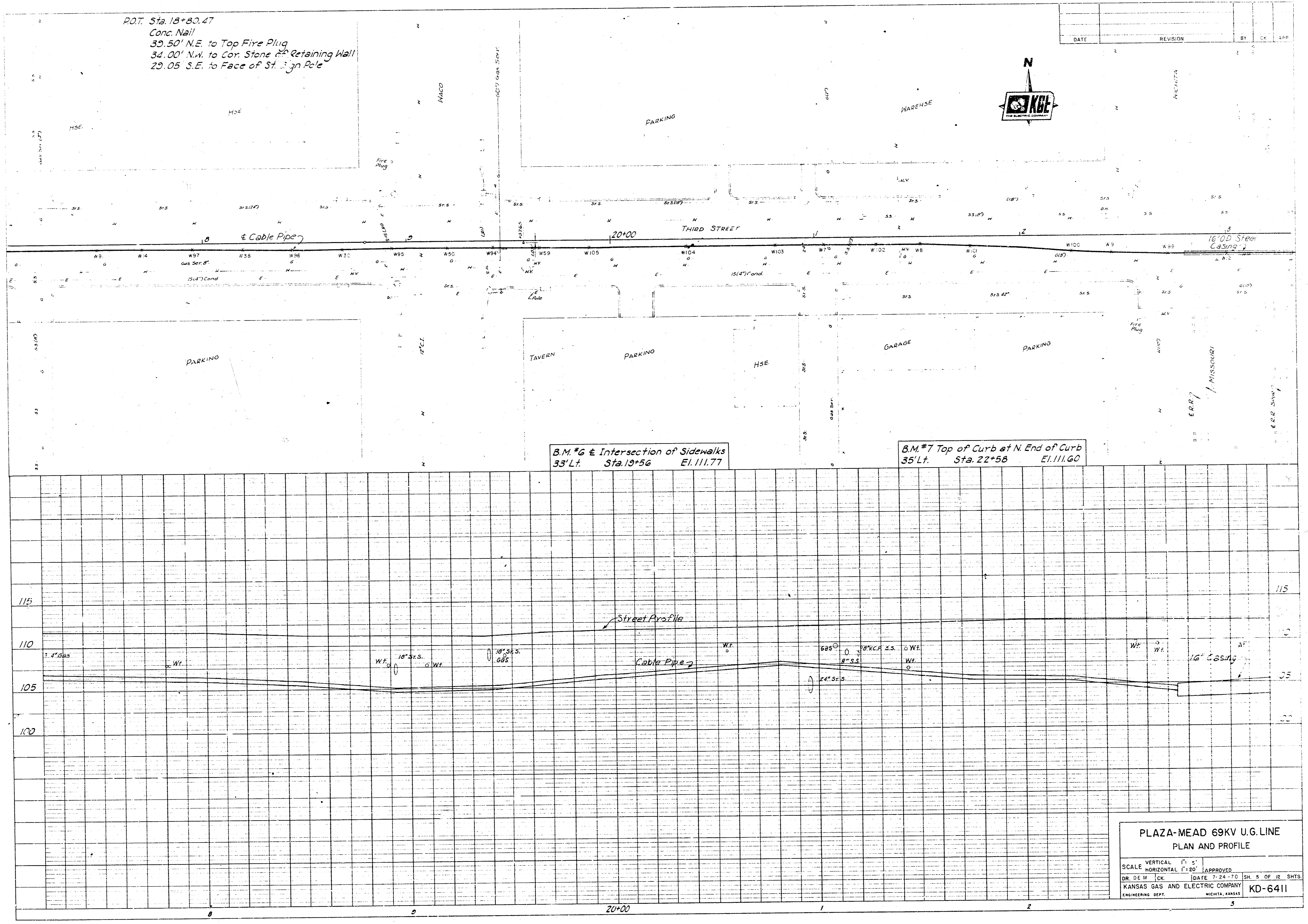
DATE	REVISION



B.M. #5 Top of Fire Plug
27' Lt. Sta. 14+00 El. 114.32

PLAZA-MEAD 69KV U.G. LINE
PLAN AND PROFILE

SCALE VERTICAL 1" = 5'
HORIZONTAL 1" = 20' APPROVED
DR. S.C.W. [Signature] DATE 7-24-70 DN. # 02 12 SMTS.
KANSAS GAS AND ELECTRIC COMPANY
ENGINEERING DEPT. WICHITA, KANSAS **KD-6411**



P.O.T. Sta. 18+80.47
 Conc. Nail
 39.50' N.E. to Top Fire Plug
 3d. 00' N.W. to Cor. Stone Retaining Wall
 29.05' S.E. to Face of St. Sign Pole

DATE	REVISION	BY	CHK	APP



B.M. #6 @ Intersection of Sidewalks
 35' Lt. Sta. 19+56 El. 111.77

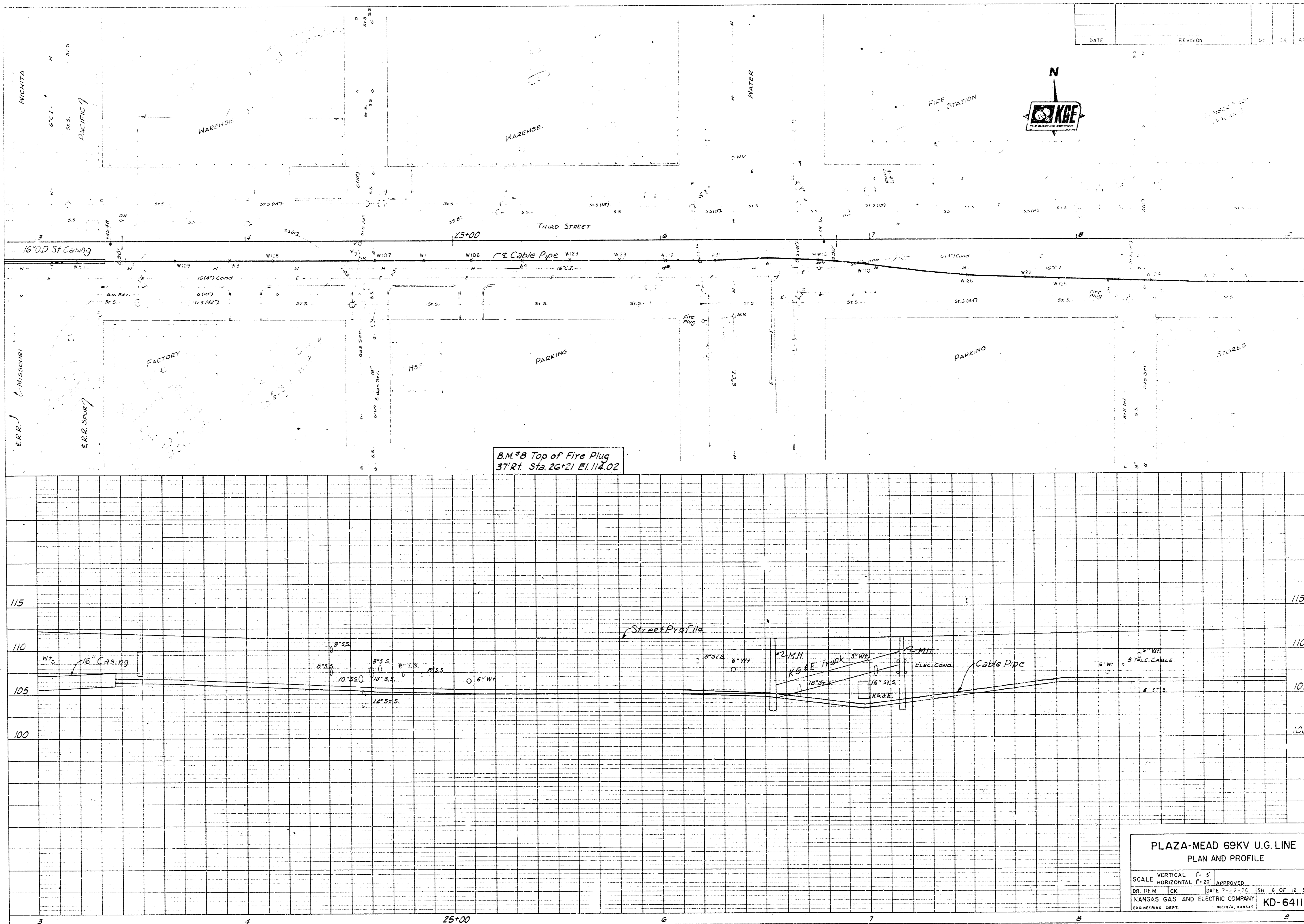
B.M. #7 Top of Curb at N. End of Curb
 35' Lt. Sta. 22+58 El. 111.60

PLAZA-MEAD 69KV U.G. LINE
 PLAN AND PROFILE

SCALE: VERTICAL 1" = 5'
 HORIZONTAL 1" = 20'

DR. D.E. MCKAY
 KANSAS GAS AND ELECTRIC COMPANY
 ENGINEERING DEPT. WICHITA, KANSAS

APPROVED: [Signature]
 DATE: 7-24-70
 SHEET 5 OF 12 SHEETS
KD-6411

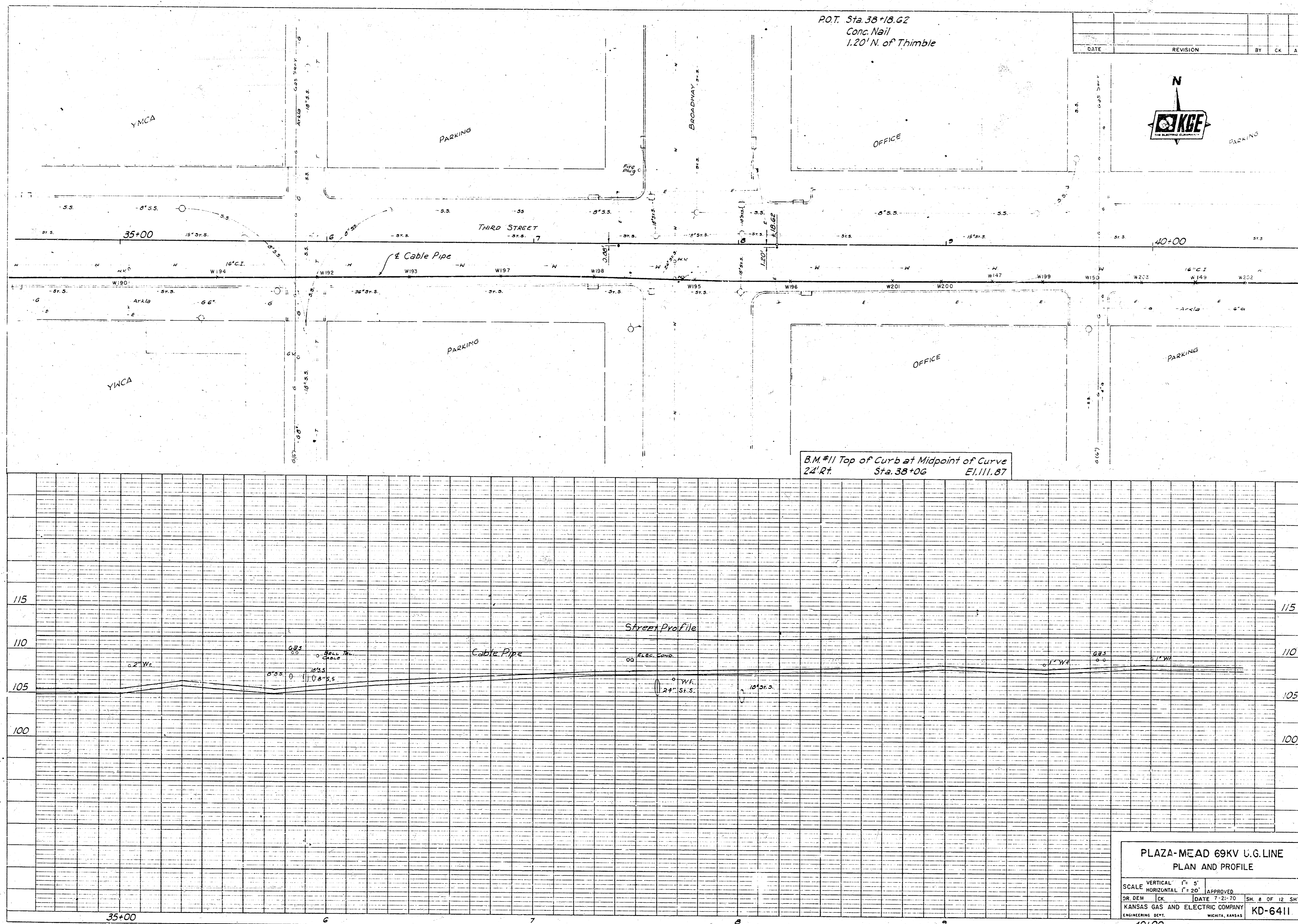


DATE	REVISION	BY	CHK	APP



B.M. #8 Top of Fire Plug
37' R/L Sta. 26+21 E.L. 112.02

PLAZA-MEAD 69KV U.G. LINE
PLAN AND PROFILE
 SCALE VERTICAL 1" = 5'
 HORIZONTAL 1" = 25'
 DR. DEM. [OK] DATE 7-21-70 SH. 6 OF 12 SHTS.
 KANSAS GAS AND ELECTRIC COMPANY
 ENGINEERING DEPT. WICHITA, KANSAS **KD-6411**



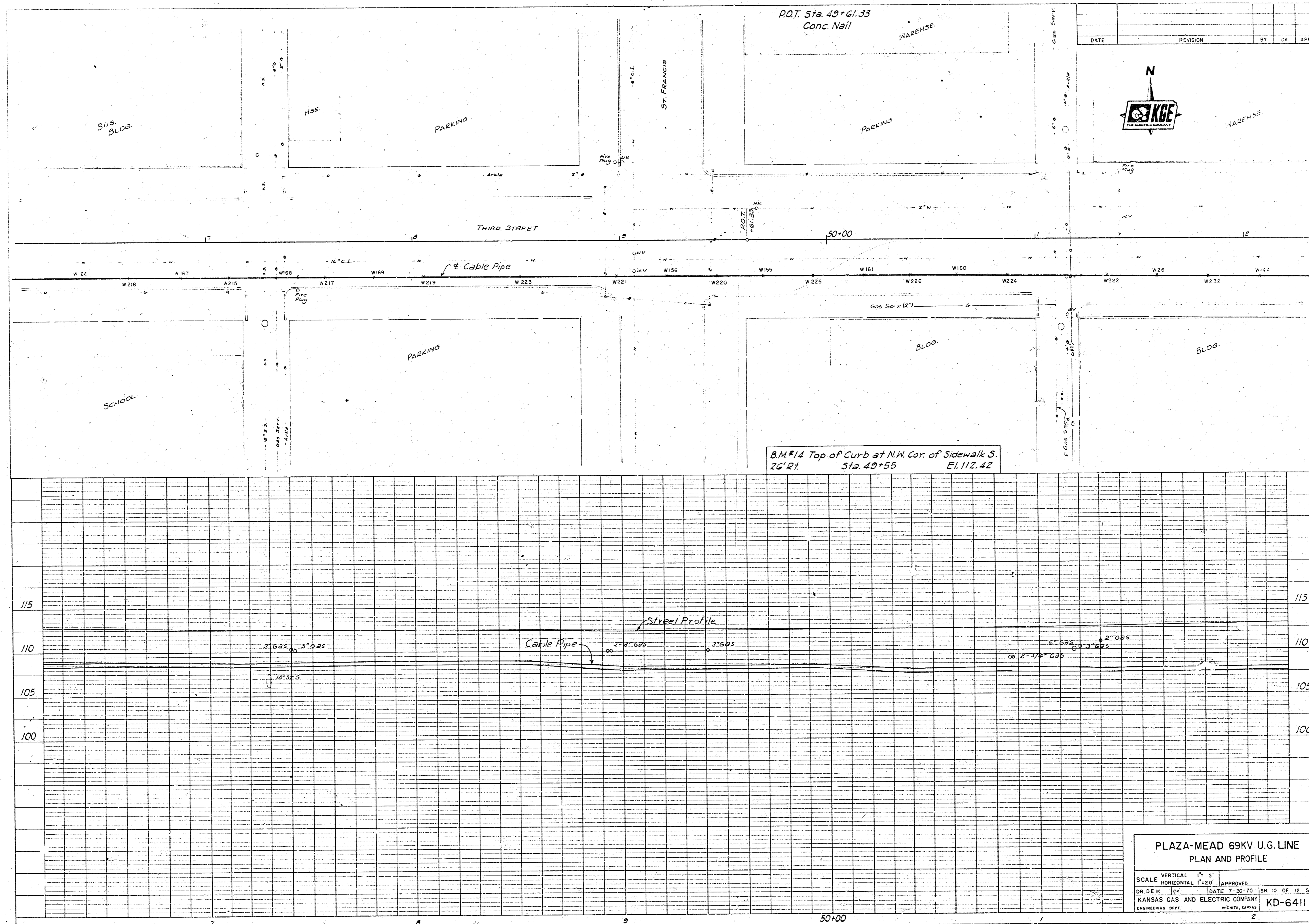
DATE	REVISION	BY	CK	APP



PLAZA-MEAD 69KV U.G. LINE
PLAN AND PROFILE

SCALE VERTICAL 1" = 5'
 HORIZONTAL 1" = 20' APPROVED

DR. DEW [Signature] DATE 7-25-70 SH. 8 OF 12 SHTS.
 KANSAS GAS AND ELECTRIC COMPANY
 ENGINEERING DEPT. WICHITA, KANSAS **KD-6411**
 40+00



DATE	REVISION	BY	CHK	APP.



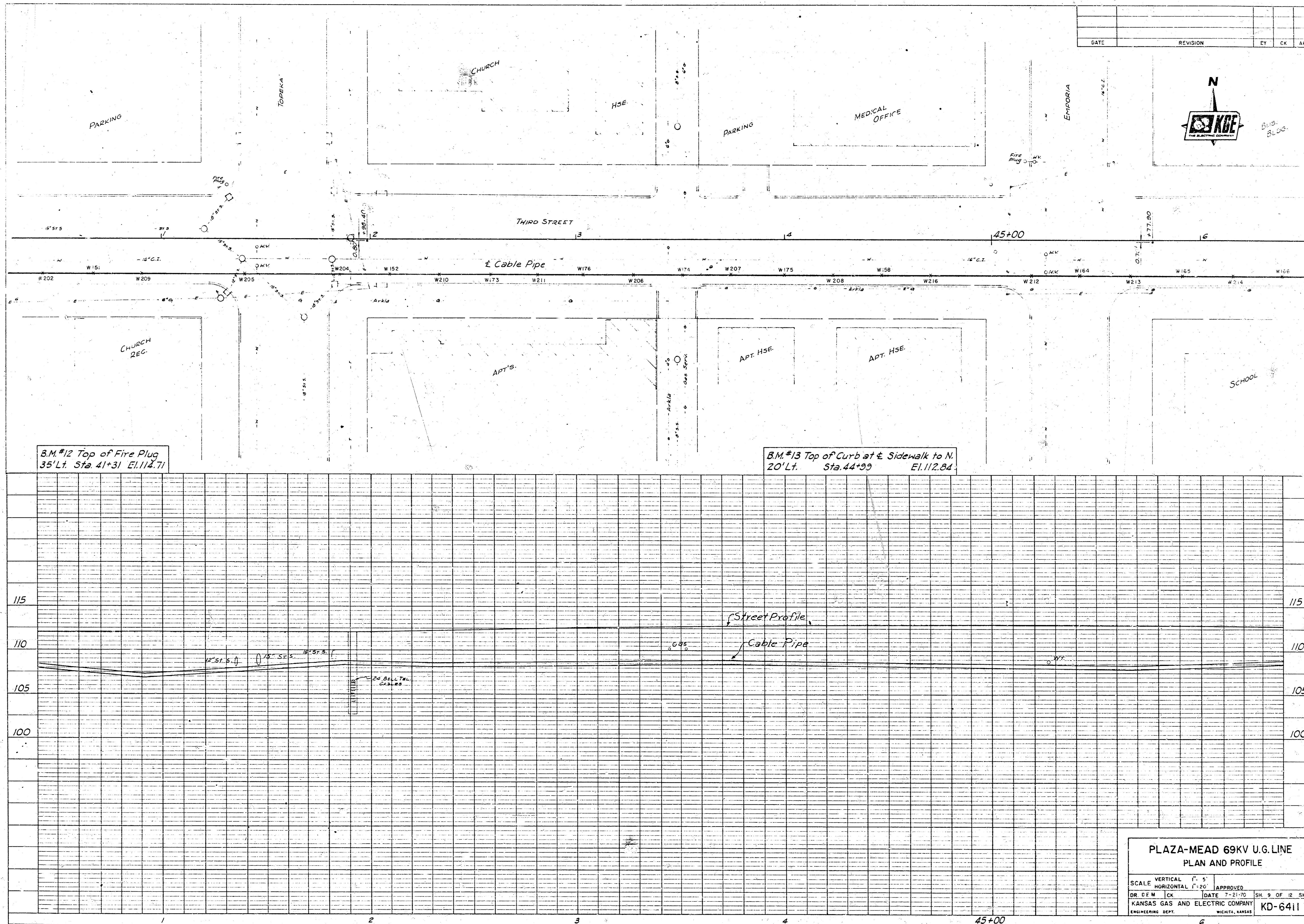
B.M. #14 Top of Curb at N.W. Cor. of Sidewalk S.
26' Rt. Sta. 49+55 El. 112.42

**PLAZA-MEAD 69KV U.G. LINE
PLAN AND PROFILE**

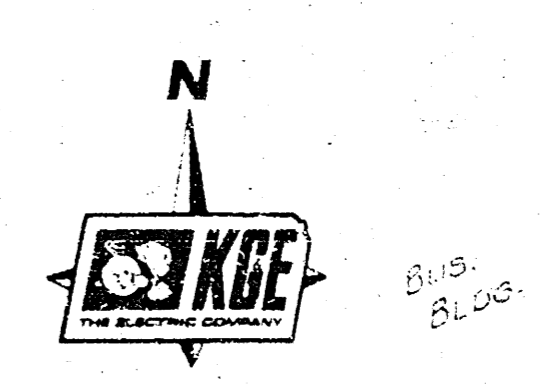
SCALE VERTICAL 1" = 5'
HORIZONTAL 1" = 20' APPROVED

DR. DEK. JCY DATE 7-20-70 SHEET 10 OF 12 SHTS.
KANSAS GAS AND ELECTRIC COMPANY
ENGINEERING DEPT. WICHITA, KANSAS **KD-6411**

50+00



DATE	REVISION	EY	CK	APP



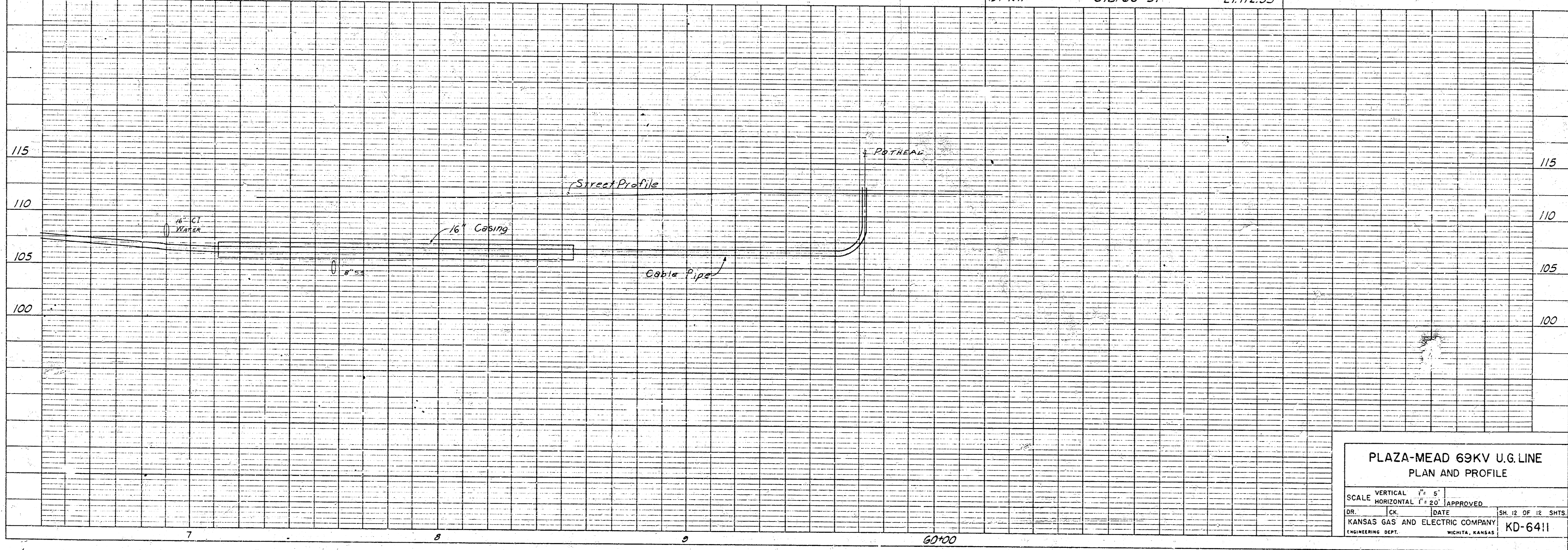
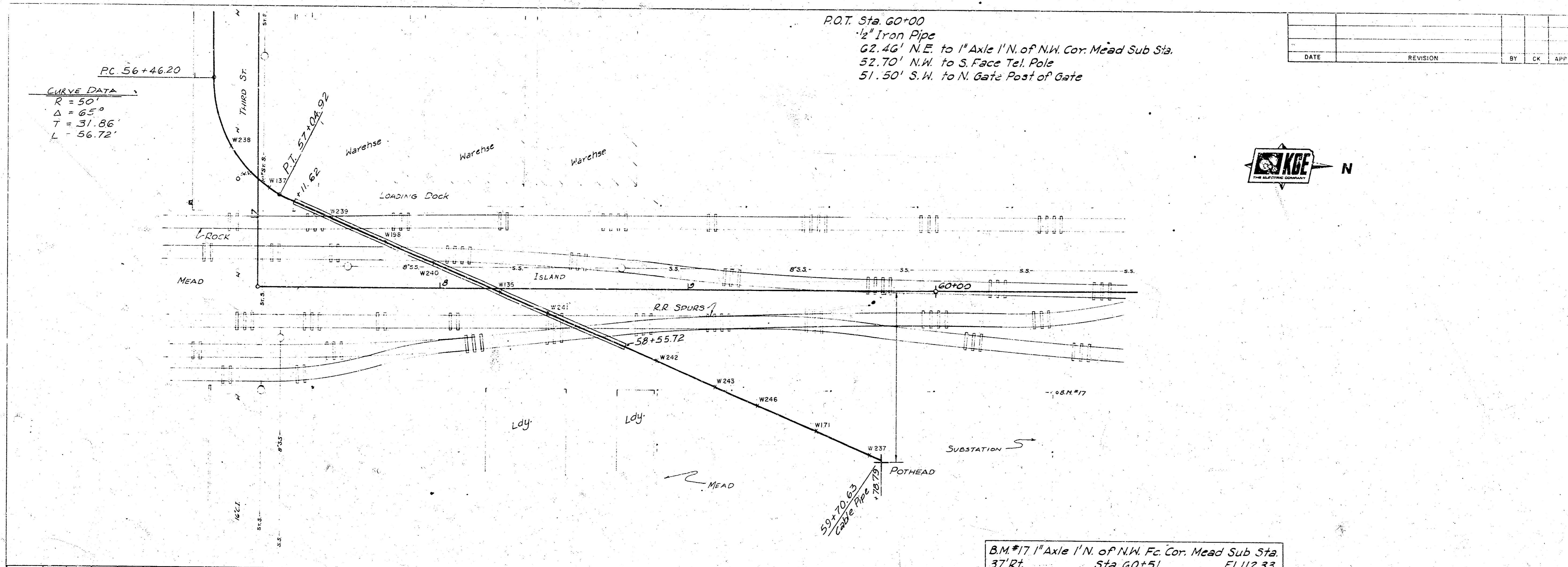
B.M.#12 Top of Fire Plug
35' Lt. Sta. 41+31 El. 112.71

B.M.#13 Top of Curb at S. Sidewalk to N.
20' Lt. Sta. 44+99 El. 112.84

**PLAZA-MEAD 69KV U.G. LINE
PLAN AND PROFILE**

SCALE VERTICAL 1" = 5'
HORIZONTAL 1" = 20'

DR. OF M. CK. DATE 7-21-70 SH. 9 OF 12 SHEETS
KANSAS GAS AND ELECTRIC COMPANY
ENGINEERING DEPT. WICHITA, KANSAS
KD-6411



PLAZA-MEAD 69KV U.G. LINE
 PLAN AND PROFILE

SCALE VERTICAL 1" = 5'
 HORIZONTAL 1" = 20'

DR. [] DATE [] APPROVED []
 KANSAS GAS AND ELECTRIC COMPANY
 ENGINEERING DEPT. WICHITA, KANSAS

SH. 12 OF 12 SHTS.
 KD-6411

60100