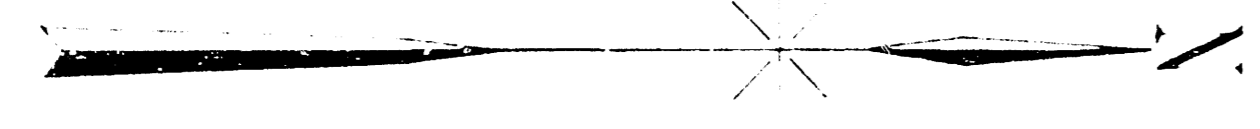


SEC. 9, T. 27 S., R. 1 E.

SEC. 16, T. 27 S., R. 1 E.

E A G L E



ST. FRANCIS AVE.

ST. FRANCIS AVE.

FERRELL'S  
SANTA FE AVE.  
TWELFTH ST.  
SECOND ADDN.

NORTH PARK ADDN.  
DEFFENBAUGH'S ADDN.  
NEW YORK ADDN.

SANTA FE AVE.

MEAD AVE.  
THE KANSAS MILLING CO.  
PARMENTER'S SECOND ADDN.  
GLAZE'S  
CEMENT STONE & SUPPLY CO.  
A. H. ROSINBERGER ET AL.  
THE CESSNA AIRCRAFT CO.

MOSLEY AVE.  
HODSON'S  
ALPINE ICE CO.

GLAZE & JOCELYN'S  
SECOND ADDN.

WASHINGTON AVE.

WASHINGTON AVE.

MILL'S ADDN.

MOSLEY AVE.  
GLAZE &  
JOCELYN'S  
SIXTEENTH ADDN.

ST.

ELEVENTH ST.

TWELFTH ST.

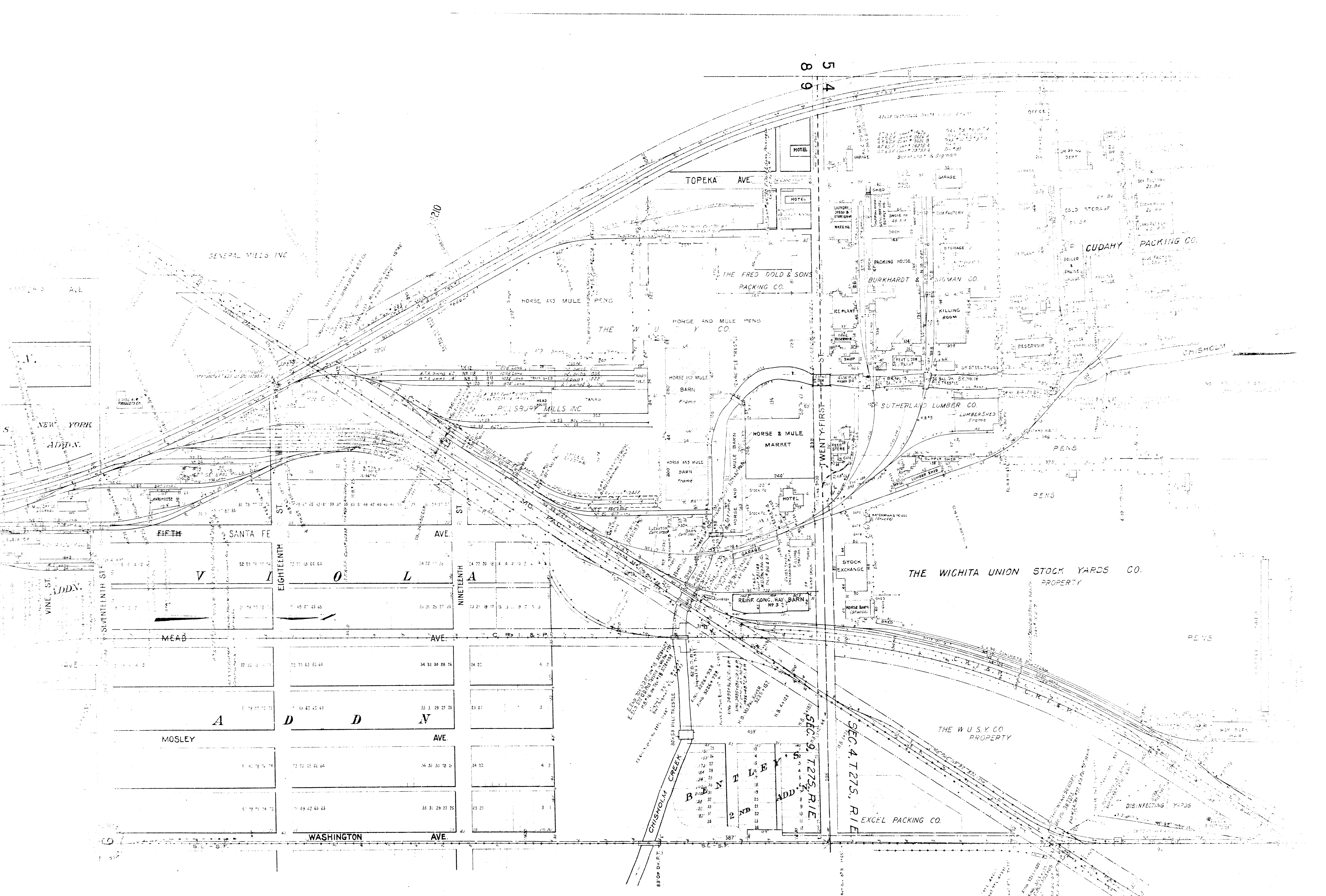
THIRTEENTH ST.

FOURTEENTH ST.

SIXTEENTH ST.

SEVENTH ST.

111672



Cont. #9885 Construction, maintenance and operation of an automatic interlocking plant and signal system for four crossings. Placed in service Feb. 10, 1949.

54  
3233

TWENTY-FIFTH ST.

MADISON AVE.

MOSLEY AVE.

WASHINGTON AVE.

ST. FRANCIS AVE.

SANTA FE AVE.

MEAD AVE.

MOSLEY AVE.

WASHINGTON AVE.

TWENTY-EIGHTH ST.

TWENTY-NINTH ST.

SEC. 33, T. 26 S., R. 1 E.

GOLDEN HULL REFINERY

KANSAS STATE

STORAGE TANK

STORAGE TANK

STEEL STORAGE TANK

BARECO OIL CO.

THE WICHITA TERMINAL ELEVATOR CO.

MADISON AVE.

MOSLEY AVE.

MOSLEY AVE.

MOSLEY AVE.

MOSLEY AVE.

MOSLEY AVE.

MOSLEY AVE.

MOSLEY AVE.

MOSLEY AVE.

MOSLEY AVE.

TWENTY-SIXTHS

TWENTY-SEVENTH

TWENTY-EIGHTH

TWENTY-NINTH

MADISON

MOSLEY

MOSLEY

MOSLEY

MOSLEY

MOSLEY

MADISON

MOSLEY

MOSLEY

MOSLEY

MOSLEY

MOSLEY

MADISON

MOSLEY

MOSLEY

MOSLEY

MOSLEY

MOSLEY

MADISON

MOSLEY

MOSLEY

MOSLEY

MOSLEY

MOSLEY

MADISON

MOSLEY

MOSLEY

MOSLEY

MOSLEY

MOSLEY

MADISON

MOSLEY

MOSLEY

MOSLEY

MOSLEY

MOSLEY

MADISON

MOSLEY

MOSLEY

MOSLEY

MOSLEY

MOSLEY

MADISON

MOSLEY

MOSLEY

MOSLEY

MOSLEY

MOSLEY

MADISON

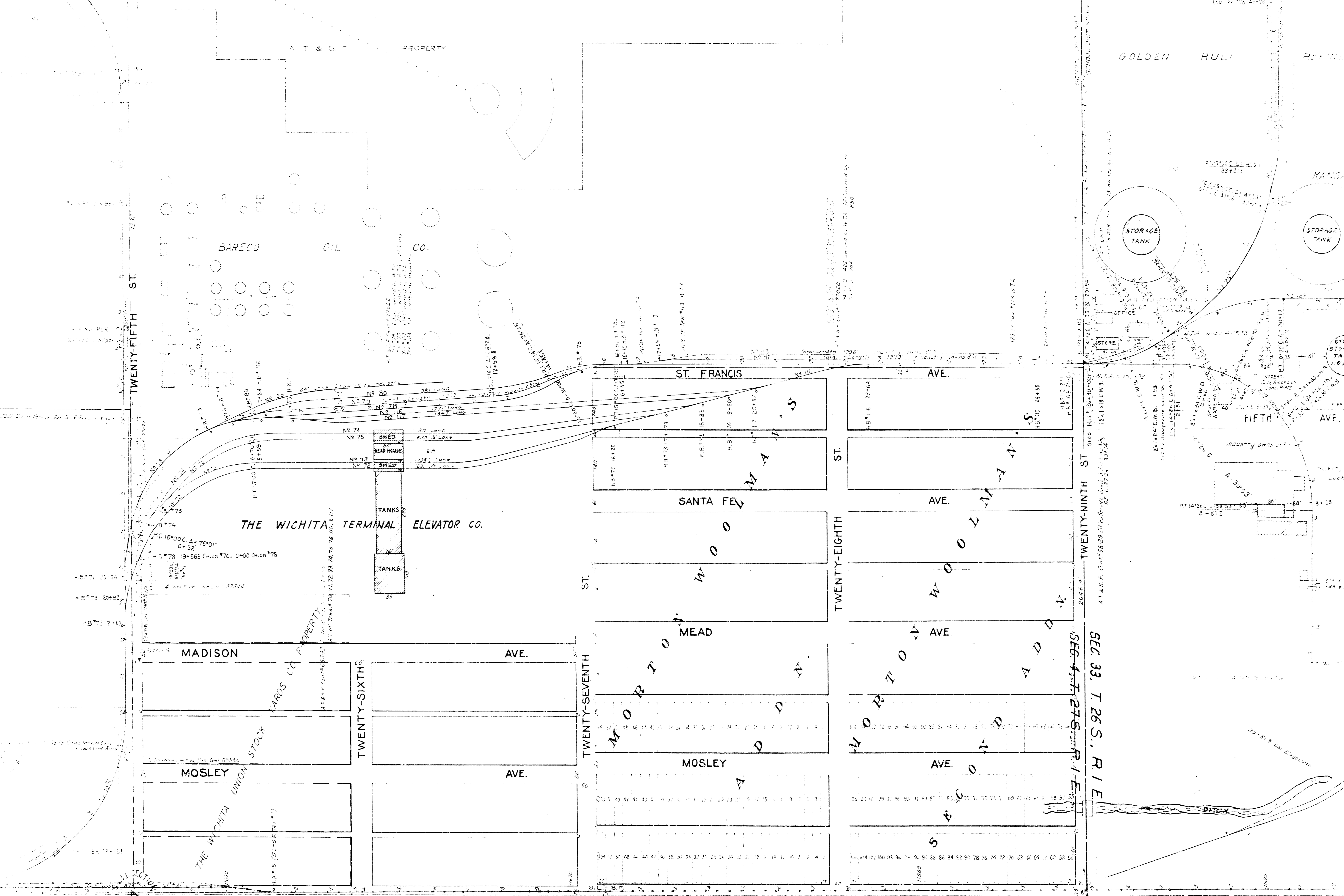
MOSLEY

MOSLEY

MOSLEY

MOSLEY

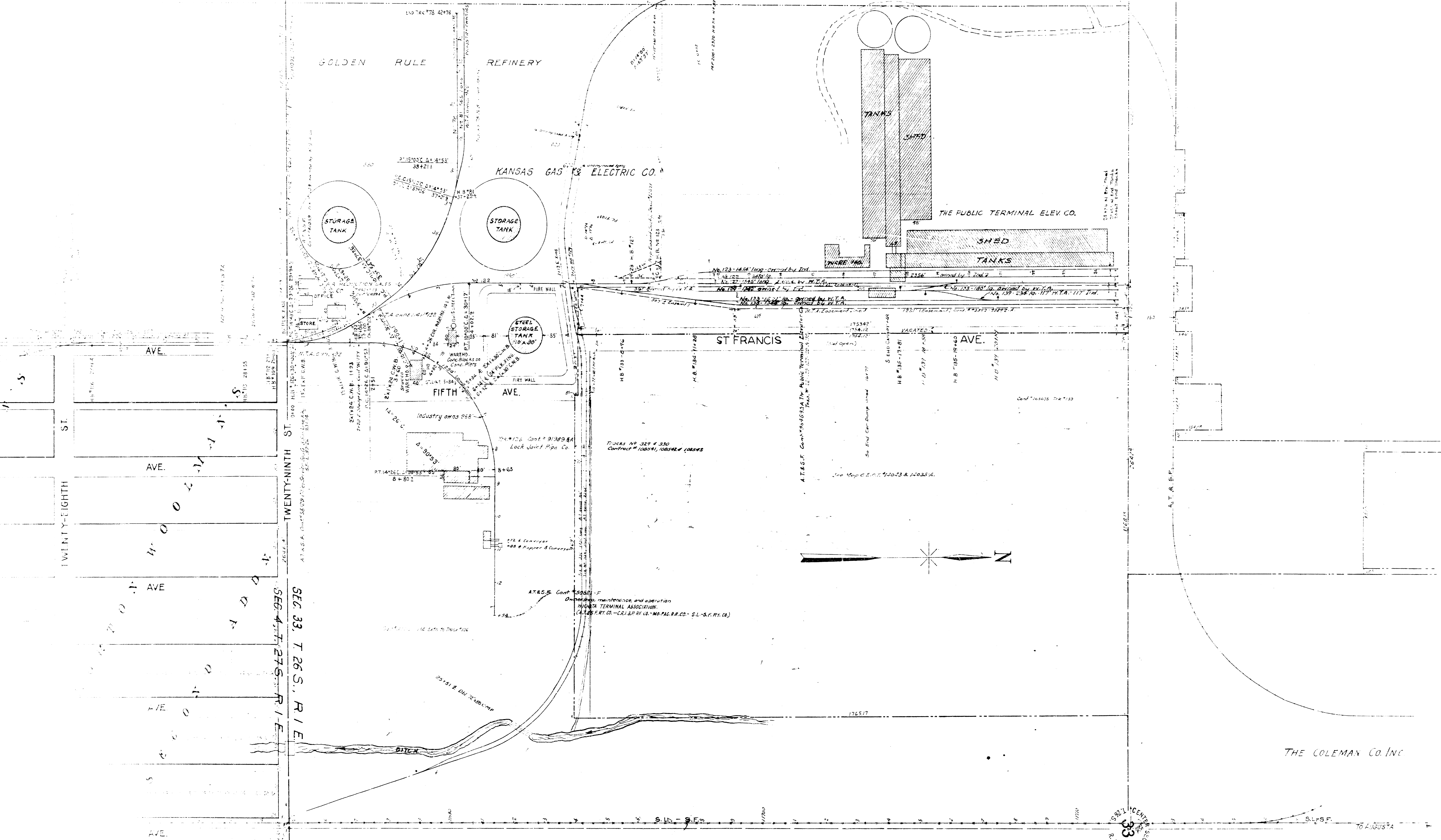
MOSLEY



SECTION 33, T. 26 S., R. 1 E.

ADDN

32 33  
S 4



STATION MAP - TRACKS AND STRUCTURES  
**WICHITA**  
 SEDGWICK COUNTY, KANSAS  
 WICHITA TERMINAL ASSOCIATION  
 COMPILED BY  
 THE AT.&S.F. RY CO. THE CR.I.&P. RY CO.

33  
SECTION  
 176517

16 AUGUST 1916