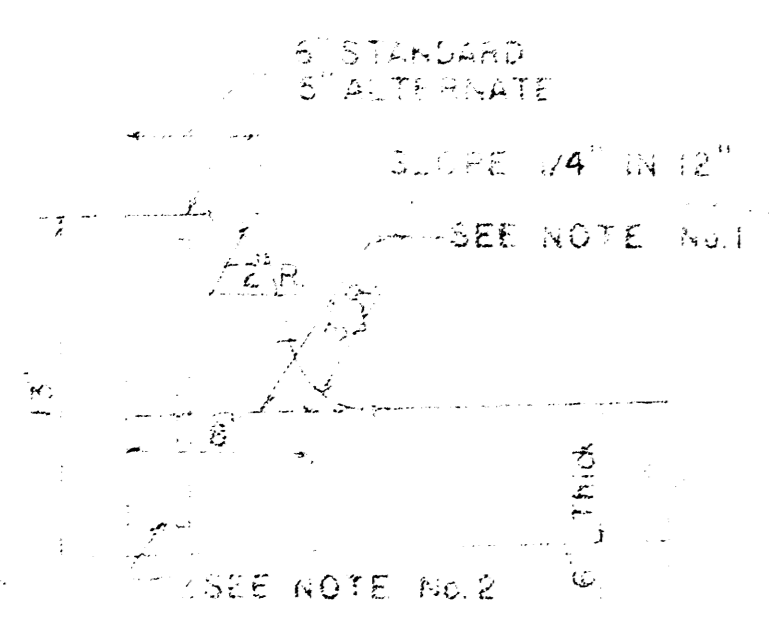
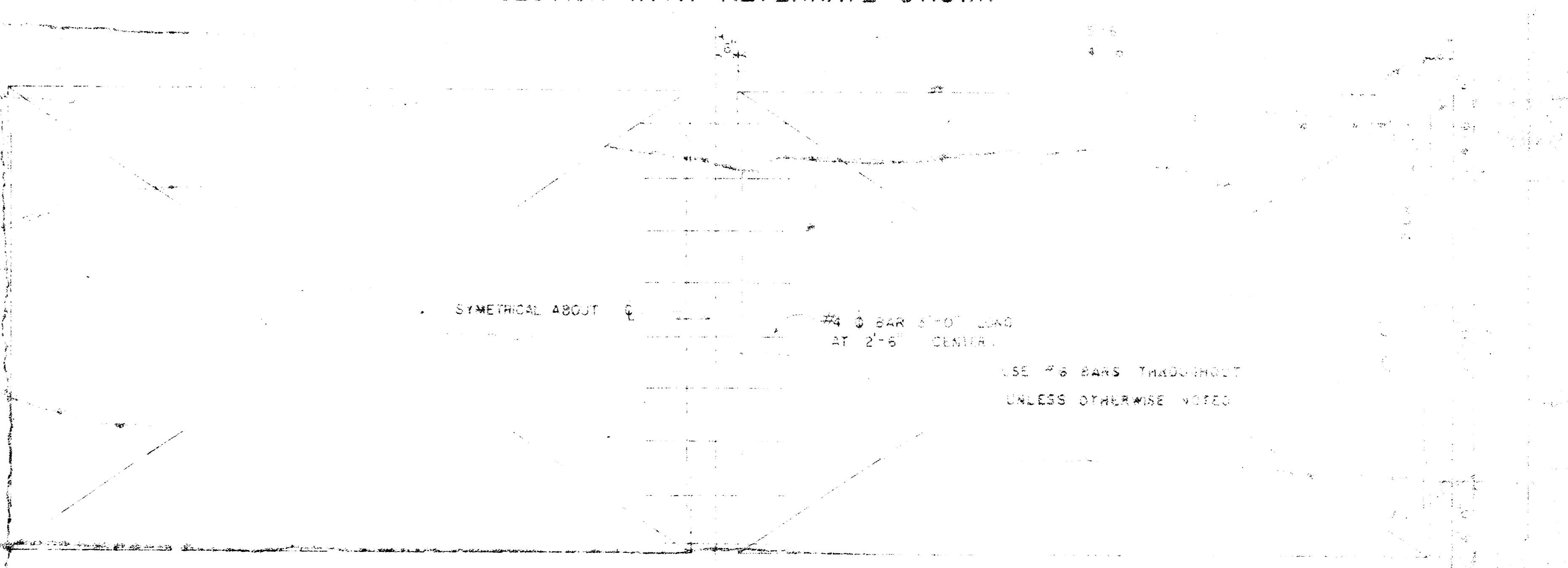
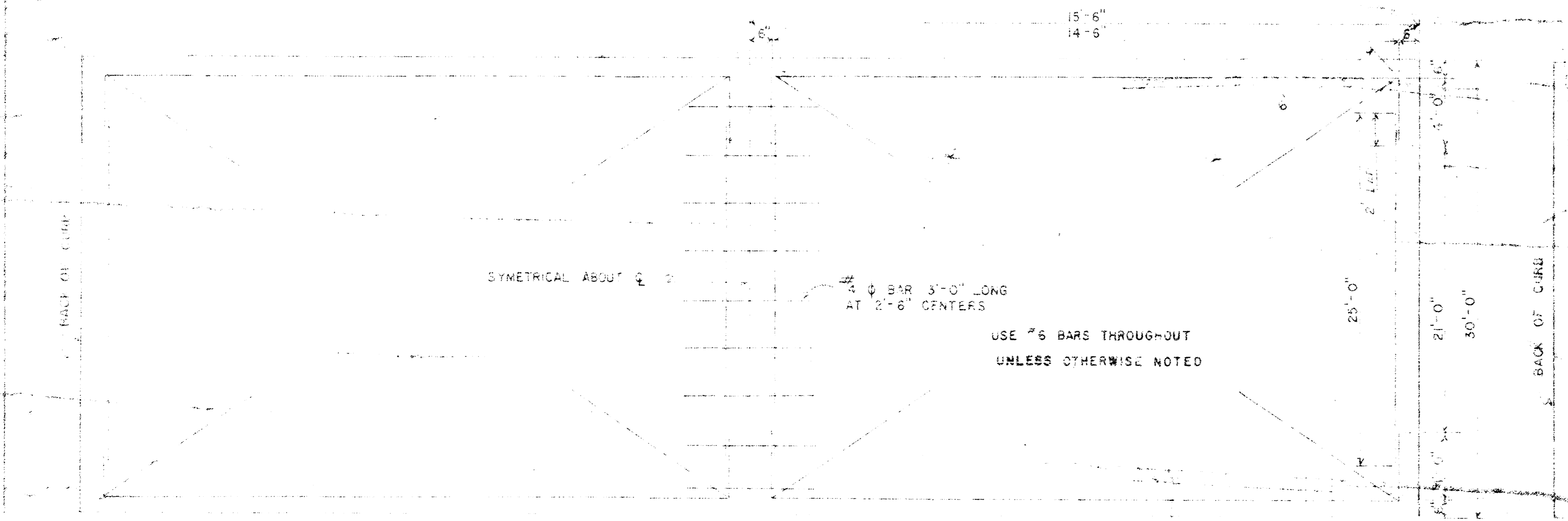
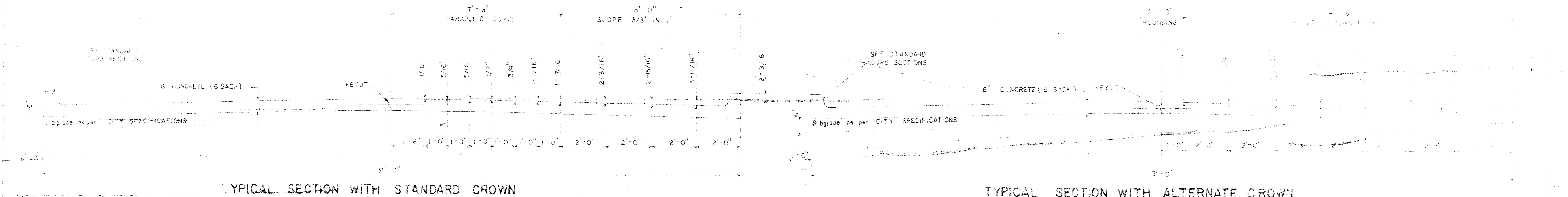
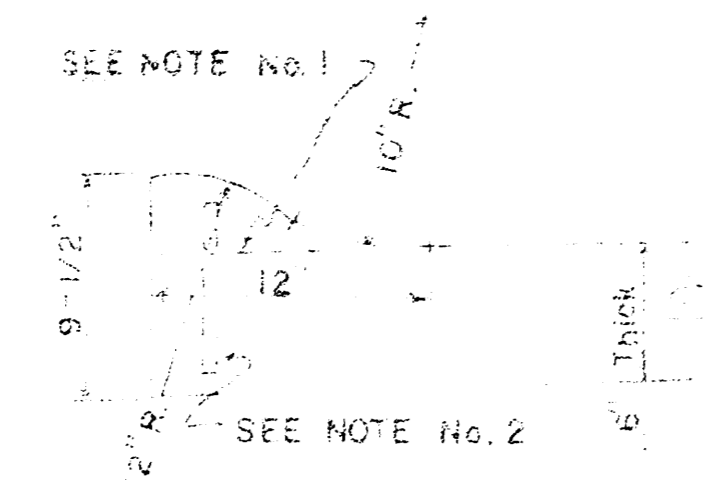


BOYD AVE.

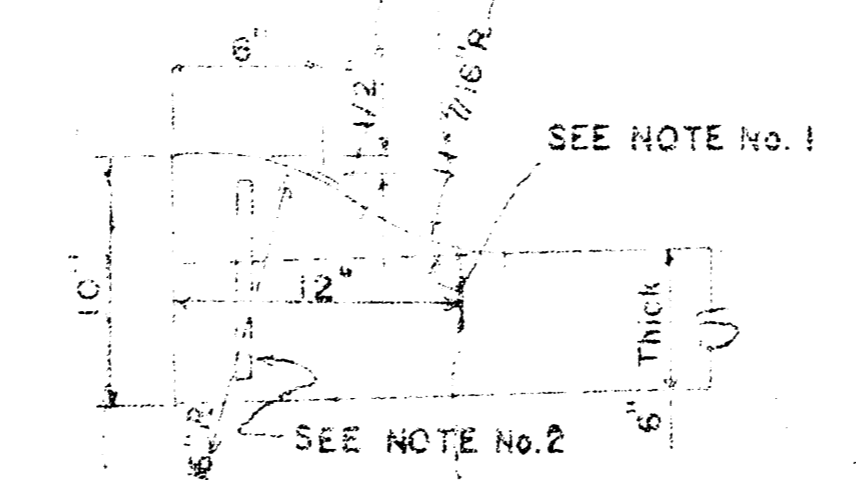
TYPICAL SECTIONS OF 30' CONCRETE PAVEMENT



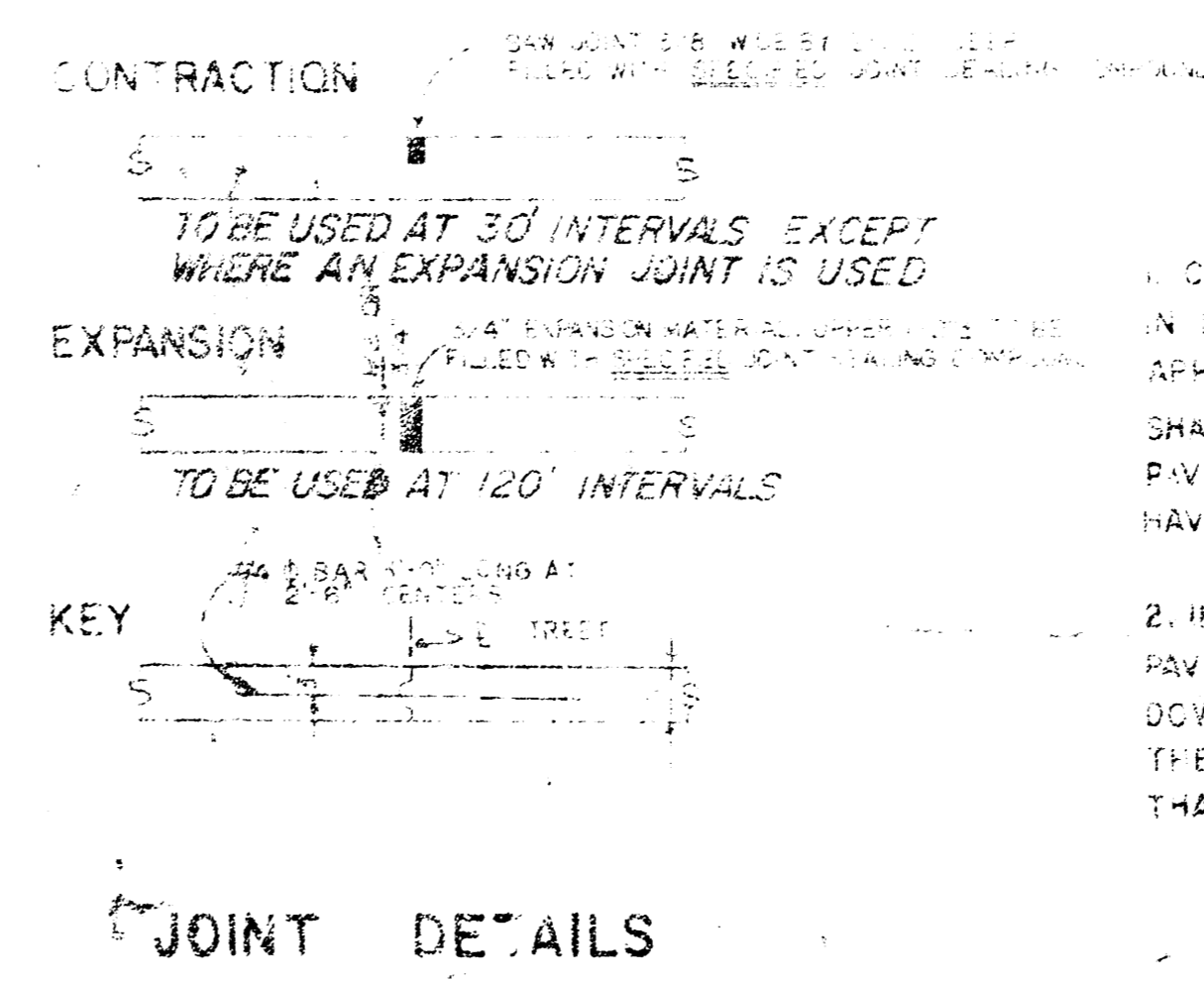
INTEGRAL CURB



ROLL-TYPE



ALTERNATE ROLL-TYPE



GENERAL NOTES

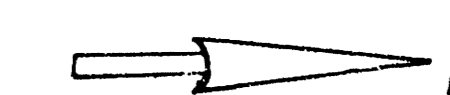
- CONTRACTION JOINTS MAY BE CONSTRUCTED IN INTEGRAL CURB BY SAWING WITH AN APPROVED CONCRETE SAW. THE SAW CUT SHALL EXTEND THROUGH THE CURB TO THE PAVEMENT. SAWED CONTRACTION JOINTS SHALL HAVE A MAXIMUM SPACING OF 100'.
- INTEGRAL CURB SHALL BE TIED TO THE PAVEMENT BASE WITH SHORT DEFORMED DWEL BARS SPACED AT 2'-6" INTERVALS. THESE DWEL BARS SHALL NOT BE LESS THAN 1/2" OR MORE THAN 3/4" IN DIAMETER.

CITY OF WICHITA, KANSAS
 DEPARTMENT OF ENGINEERING
 E. W. BRUGGEMAN - DIRECTOR OF ENGINEERING CITY OF WICHITA, KANSAS
 DATE: 1958 DRAWING NO. 472 76 245 80195 000 000 001

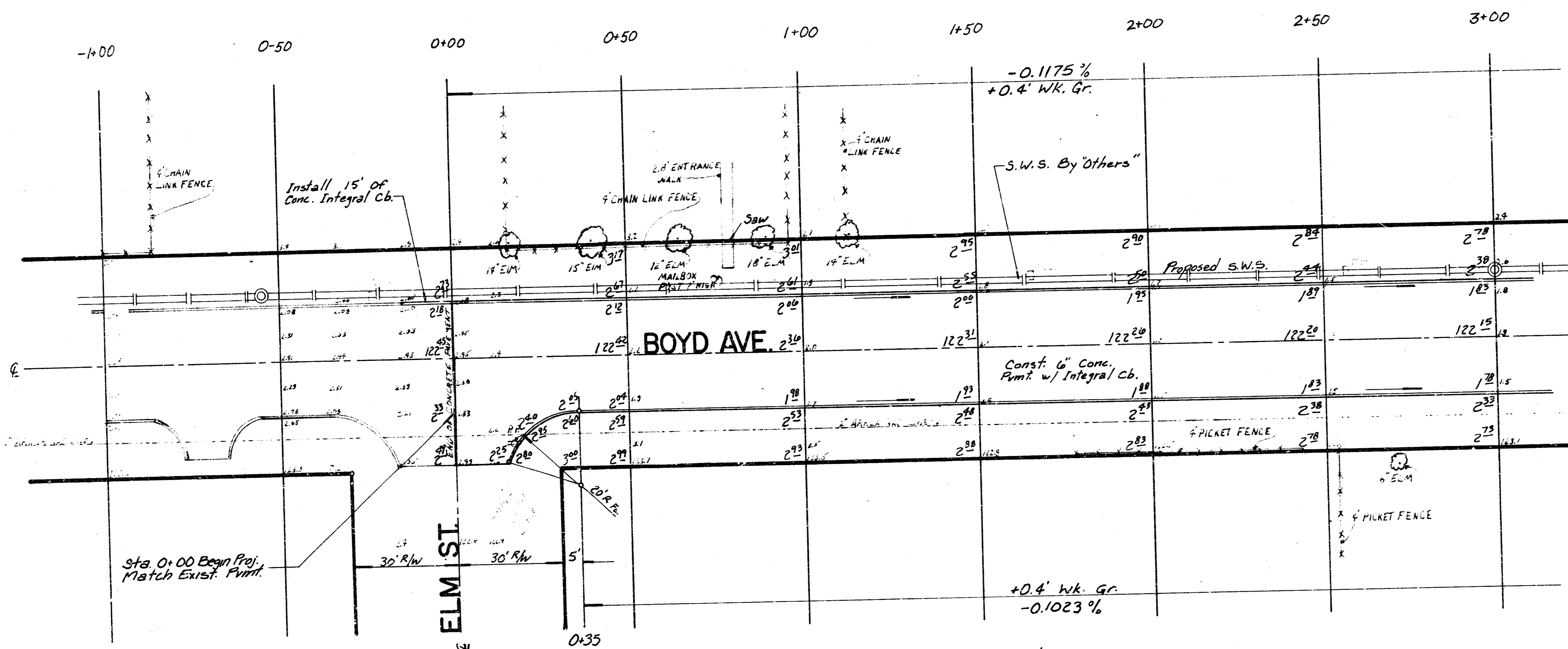
FILMED FROM THE BEST AVAILABLE COPY

B.M. = 124.36 N.E. CORNER CONCRETE STEP TO HOUSE AT 751 N. BOYD
 B.M. = 122.28 R. R. SPIKE S. FC. P.P. N. E. COR. BOYD & CENTRAL.
 B.M. = 123.29 CITY DISC. HOOVER & CENTRAL, 34' E. & 42' N. OF C. BOTH.

Boyd



SCALE: 1"=20'



Note: Contractor to co-ordinate work with Sewer Contractor.

85.5	6
364	
465	
871	
1.1	

TYPE OF SUBGRADE FOUND...
 THROUGH...
 PROPOSED...
 COMPACT...
 TYPE...

EARTHWORK

X-SECTION	EXCAVATION	
	PROP.	CITY
10%	570.7 C.Y.	351 C.Y.
TOTAL	571 C.Y.	35 C.Y.
	627.8 C.Y.	38.6 C.Y.

BOYD AVE.
 C.L. ELM TO S.L. MURDOCK
 6" CONCRETE PAVEMENT W/ INTERNAL CURB
CITY OF WICHITA, KS.
 R. W. BRUGGEMAN
 DIRECTOR OF ENGINEERING/CITY ENGINEER
 PROJ. No. 472 76 245 80195 000 000 001 2/3

