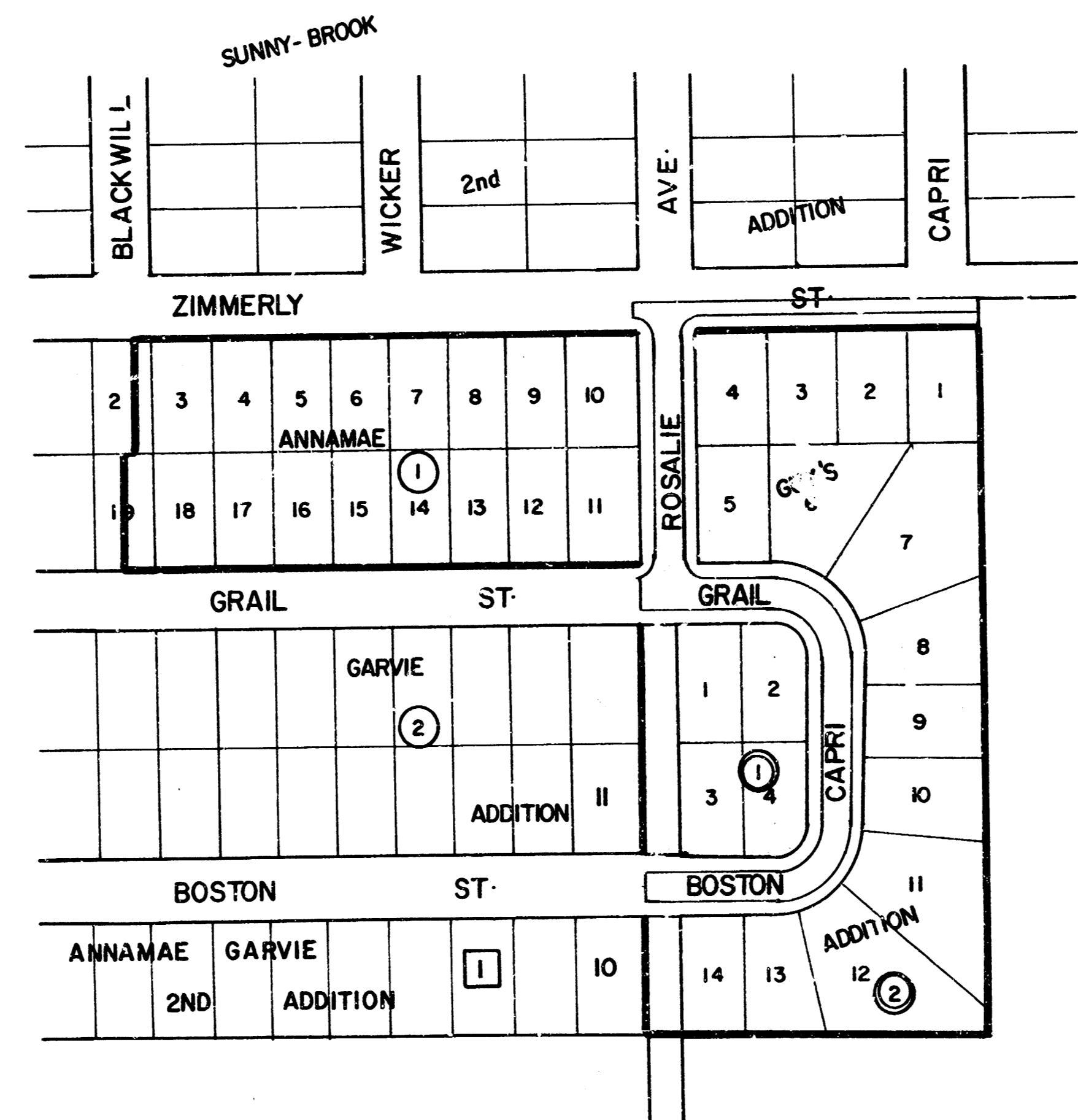


BOSTON, CAPRI, AND GRAIL FROM THE E.L. OF LOT II, BLOCK 2, ANNAMAE GARVIE ADDN. AND THE E.L. LOT 10, BLOCK I, ANNAMAE GARVIE 2ND ADDN TO THE W.L. ROSALIE.

ROSALIE FROM THE N.L. GRAIL TO THE S.L. ZIMMERLY.

SOUTH HALF OF ZIMMERLY FROM THE W.L. ROSALIE TO THE E.L. OF LOT I, BLOCK 2, GUYS ADDN.

PROJ NO. 472-76-245-81143-000-000-001



- = BENEFIT DISTRICT
- = PROPOSED PAVEMENT

NOTE: NO MORE THAN 5 - 20' DRIVES TO BE CONSTRUCTED ON THIS PROJECT.

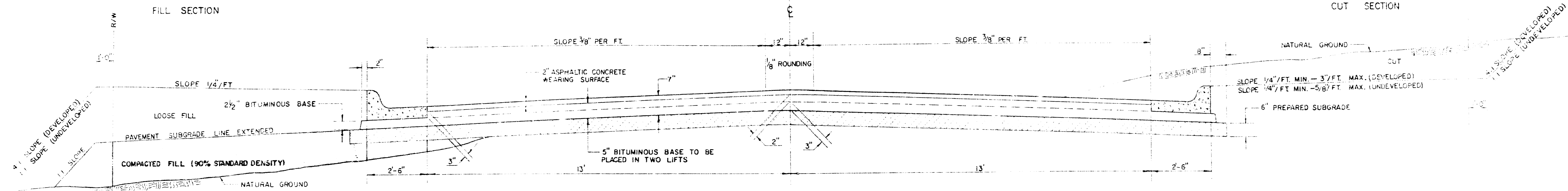
CITY OF WICHITA, KANSAS
R.W. BRUGGEMAN DIRECTOR OF ENGINEERING/CITY ENGINEER.

FILMED FROM THE BEST AVAILABLE COPY

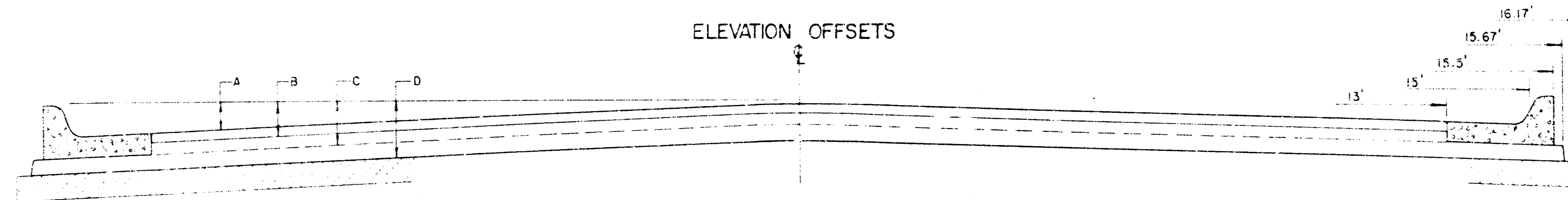
TYPICAL 31' PAVEMENT DETAILS

2/10

TRANSVERSE SECTION

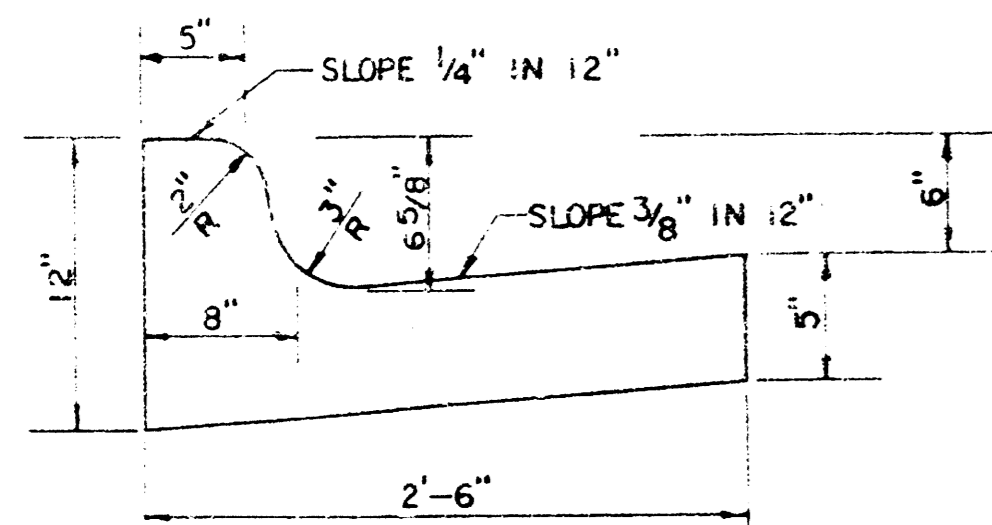


ELEVATION OFFSETS

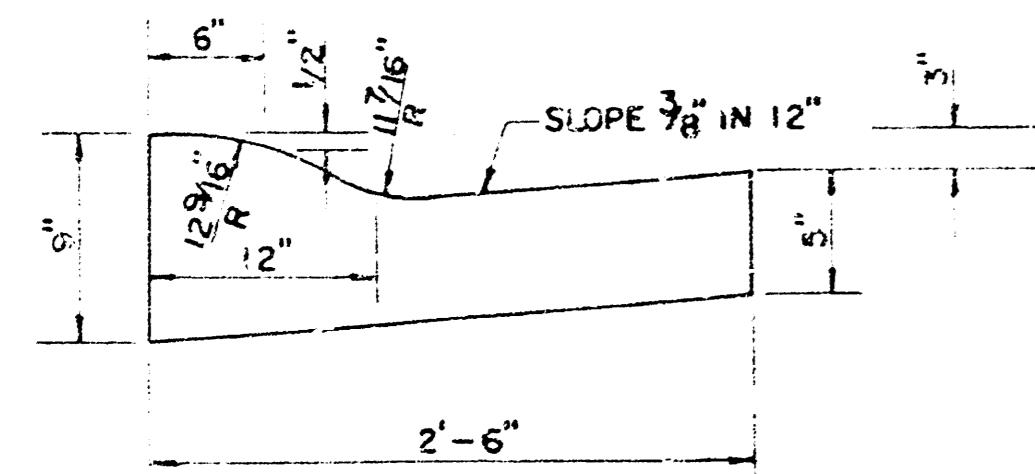


	DISTANCE FROM CENTERLINE (LT. & RT.)											
	0'	2'	4'	6'	7.5'	10'	12'	13'	15'	15.5'	15.67'	16.17'
A: TOP OF CURBS TO TOP OF SURFACE LIFT	0.10	0.14	0.21	0.27	0.32	0.33	0.46	0.49	—	—	—	—
B: TOP OF CURBS TO TOP OF UPPER BASE LIFT	0.27	0.31	0.38	0.44	0.49	0.56	0.63	0.66	—	—	—	—
C: TOP OF CURBS TO TOP OF LOWER BASE LIFT	0.44	0.49	0.57	0.54	0.70	0.79	0.87	0.90	0.98	1.00	1.00	—
D: TOP OF CURBS TO TOP OF SUBGRADE	0.89	0.73	0.80	0.87	0.93	1.01	1.08	1.12	1.19	1.21	1.21	1.23

COMBINED CURB & GUTTER



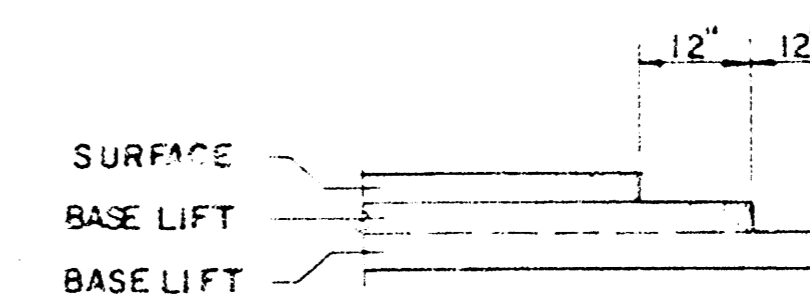
ROLL TYPE COMBINED CURB & GUTTER



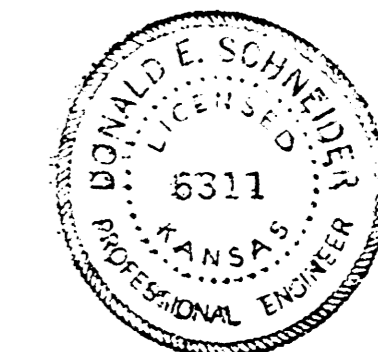
GENERAL NOTES

- 1) THE ASPHALTIC CONCRETE PAVEMENT BETWEEN THE COMBINED CURB AND GUTTER SHALL BE PAID AS SQUARE YARDS OF 7" ASPHALTIC CONCRETE (5" BITUMINOUS BASE).
- 2) THE BITUMINOUS BASE UNDER AND BEHIND THE COMBINED CURB AND GUTTER SHALL BE PAID AS SQUARE YARDS OF 2 1/2" BITUMINOUS BASE.
- 3) A TACK COAT OF EMULSIFIED ASPHALT (SC-1H OR CSS-1H) SHALL BE APPLIED AT AN APPROXIMATE RATE OF 0.05 GALLONS PER SQUARE YARD BETWEEN EACH LIFT OF ASPHALTIC MATERIAL.
- 4) BITUMINOUS BASE AND ASPHALTIC CONCRETE WEARING SURFACE SHALL BE PLACED WITH A LAYDOWN MACHINE HAVING AUTOMATIC CONTROLS FOR LINE AND GRADE.
- 5) CONSTRUCTION JOINTS IN EACH LIFT SHALL BE STAGGERED A MINIMUM DISTANCE OF ONE (1) FOOT FROM JOINTS IN PRECEDING LIFTS AND PLACED SO THAT A JOINT WILL BE CONSTRUCTED ON THE CENTERLINE OF THE TOP LIFT.
- 6) CONTRACTOR TO BID ONLY ONE SUBGRADE TREATMENT ALTERNATE WHEN ALTERNATES ARE PROVIDED IN THE PROPOSAL AND CONTRACT. THE ALTERNATE CHOSEN BY THE SUCCESSFUL BIDDER SHALL BE USED IN CONSTRUCTING THIS PROJECT.

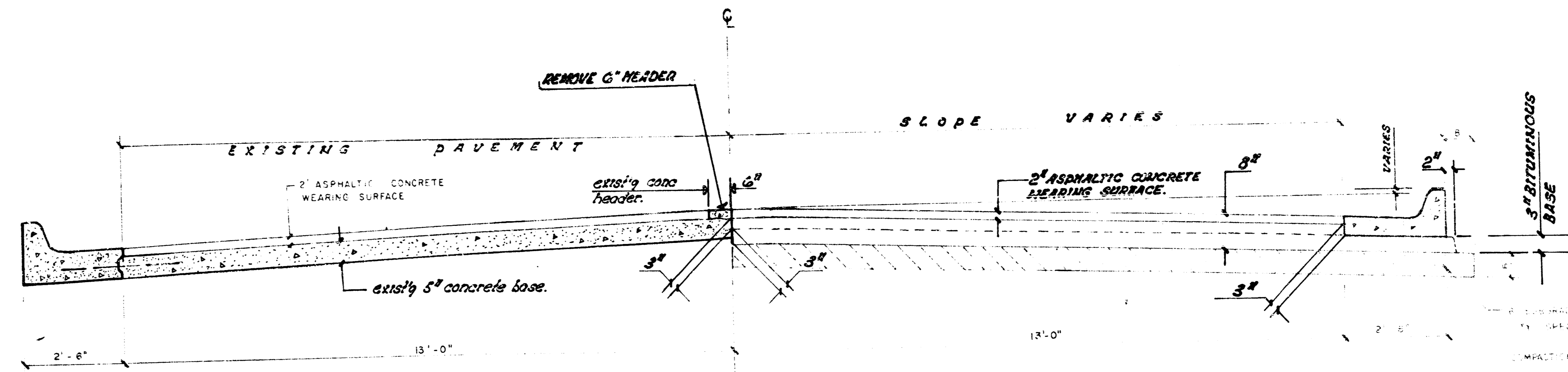
TRANSVERSE CONSTRUCTION JOINTS



TRANSVERSE CONSTRUCTION JOINTS SHALL BE CONSTRUCTED IN FLEXIBLE BASE PAVEMENTS AT LOCATIONS WHERE PAVEMENT TEMPORARILY ENDS AS SHOWN BY THE DETAIL. THE COST OF CONSTRUCTION JOINTS SHALL BE INCLUDED IN THE BID PRICE FOR SQUARE YARDS 7" ASPHALTIC CONCRETE (5" BITUMINOUS BASE).



7 INCH RESIDENTIAL ASPHALTIC CONCRETE
PAVEMENT WITH 5 INCH BITUMINOUS BASE
CITY OF WICHITA, KANSAS
PROJECT NUMBER
412-76-245-81143-000-000-001



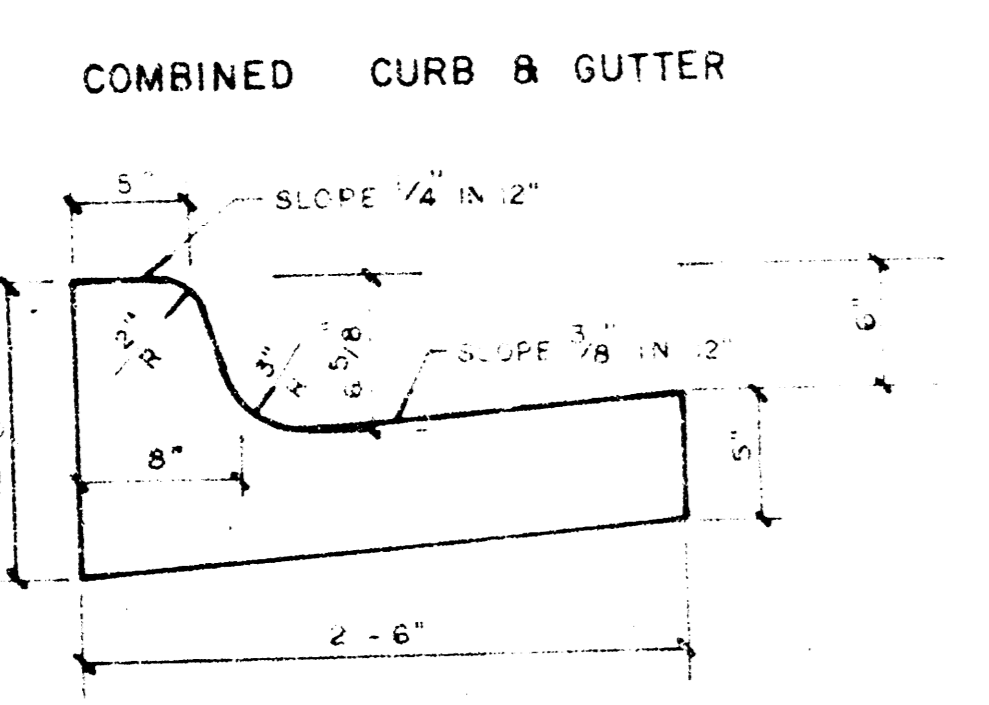
TYPICAL SECTION

15.5' ASPHALTIC CONCRETE PAVEMENT WITH BITUMINOUS BASE

A TACK COAT OF EMULSIFIED ASPH(55-IN or 655-IN) SHALL BE APPLIED AT AN APPROXIMATE RATE 0.05 GALLONS PER SQ YD BETWEEN LIFTS OF ASPHALTIC MATERIALS WHEN ORDERED BY THE ENGINEER. TACK COAT WILL NOT BE PAID DIRECTLY AND SHALL BE CONSIDERED AS SUBSIDIARY TO PRICE BID FOR ASPHALTIC PAVEMENT.

BITUMINOUS BASE AND ASPHALTIC CONCRETE WEARING SURFACE SHALL BE PLACED WITH A LAYDOWN MACHINE HAVING AUTOMATIC CONTROLS FOR CROWN AND GRADE. CONSTRUCTION JOINTS IN EACH LIFT SHALL BE STAGGERED A MINIMUM DISTANCE OF 1' WITH JOINTS IN PRECEDING LIFTS AND PLACED SUCH THAT A JOINT WILL BE CONSTRUCTED ON THE CENTERLINE IN THE TOP LIFT.

THE A.C. PAVEMENT BETWEEN THE COMBINED CURB AND GUTTER SHALL BE PAID AS 52 YDS 8" A.C. PAVEMENT 6" BITUMINOUS BASE. THE BITUMINOUS BASE UNDER THE COMBINED CURB AND GUTTER SHALL BE PAID AS 53 YDS 3" BITUMINOUS BASE.

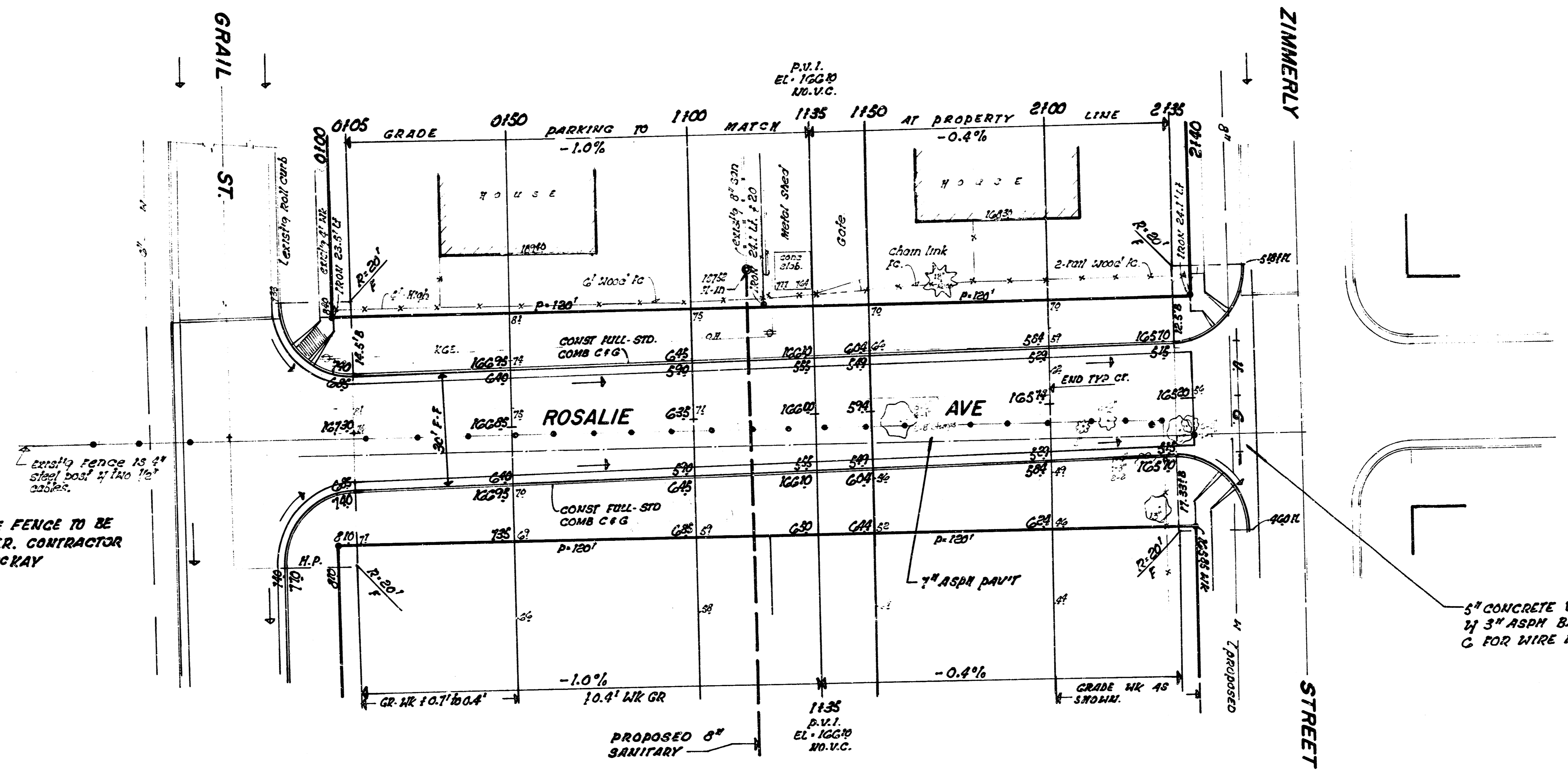
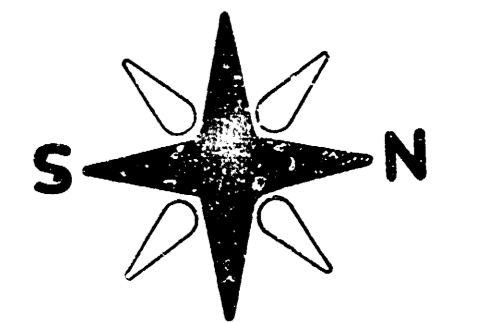


CITY OF WICHITA, KANSAS
 South One-Half ZIMMERLY STREET.

FILMED FROM THE BEST AVAILABLE COPY....

S.M. 16521 CITY OF WICHITA DISC. ROSALIE and ZIMMERLY
32' W. 24.9' N. & BORN.

SURVEY BASE LINE IS 37.00' W. AND PARALLEL TO THE EL. ROSALIE.



NOTE: EXIST'G CAME FENCE TO BE SALVAGED BY OWNER. CONTRACTOR TO NOTIFY JOHN MCKAY
236 So. TOPEKA
PHONE 262-5491

NOTE: TO FIELD ENGINEER: PAVEMENT ON ROSALIE AVE IS NOT CENTERED IN RIGHT OF WAY. PARKING WIDTHS ARE SHOWN ON THE PLANS ON THE WEST SIDE OF ROSALIE AT STATION 0105 AND STA 2135.

5" CONCRETE VALLEY GUTTER
2" 3" ASPH BASE. (SEE SMT. C FOR WIRE MESH DETAIL)

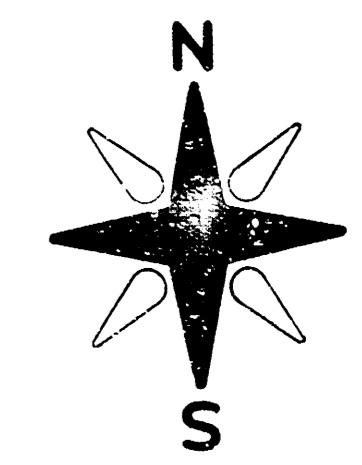
EXCAVATION
403.9 CU YDS
1.10% 46.3
444.2 CU YDS

ROSALIE AVENUE
N.L. GRAIL TO S.L. ZIMMERLY
472-76-245-81143-000-000-001
5/10

RAILROAD IN BR 22
Checked

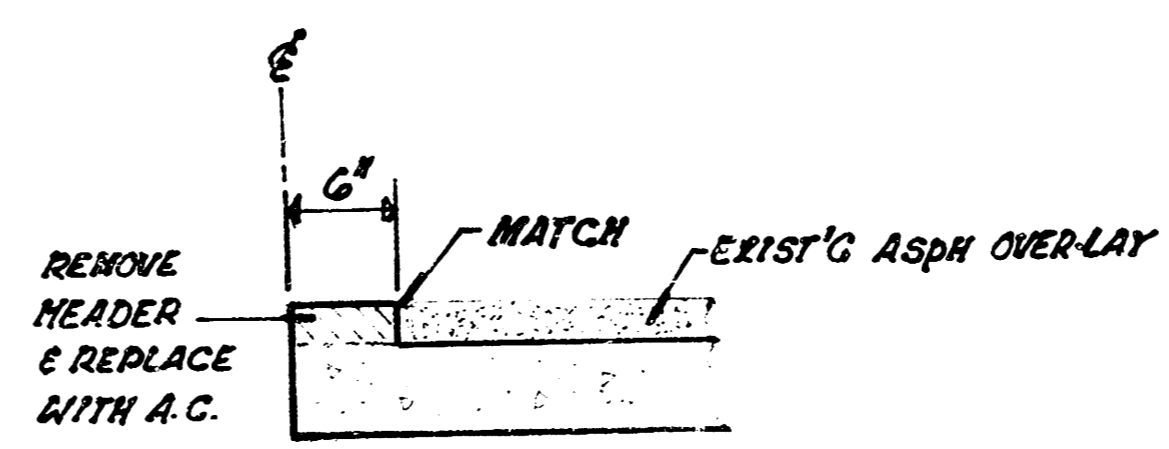
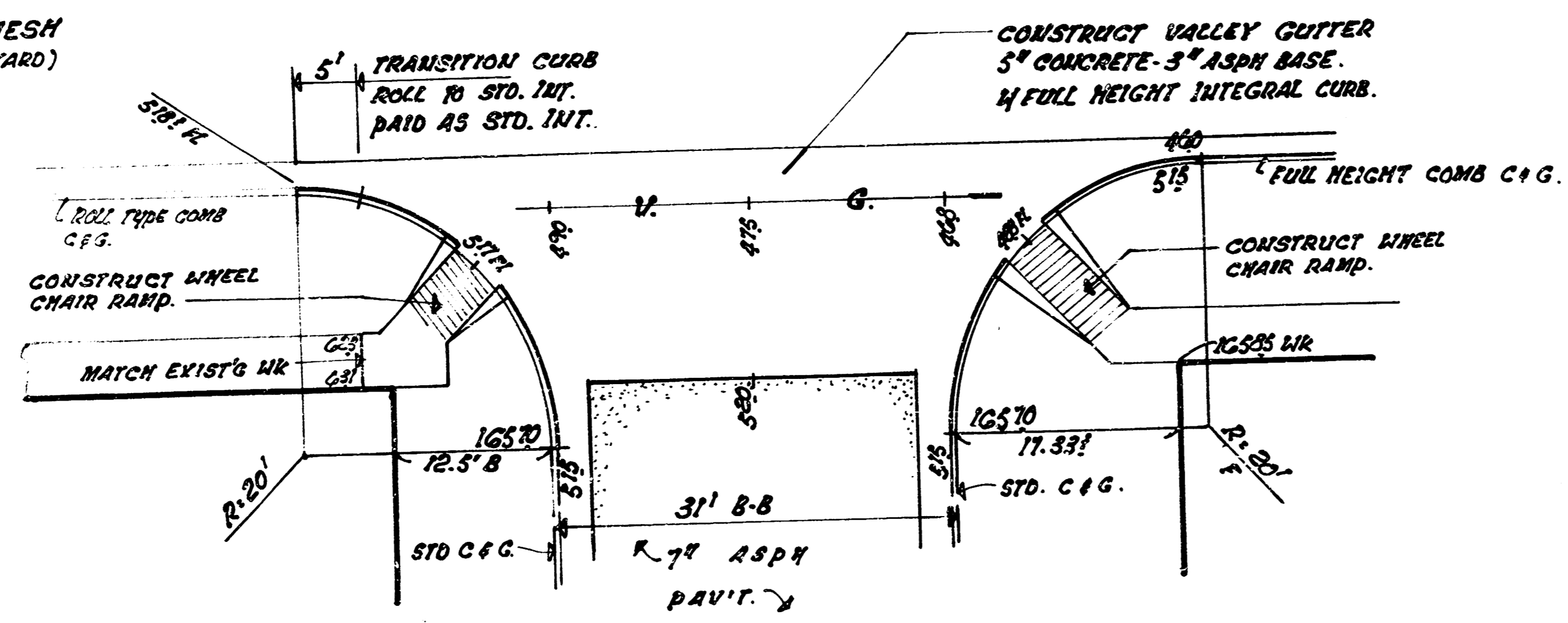
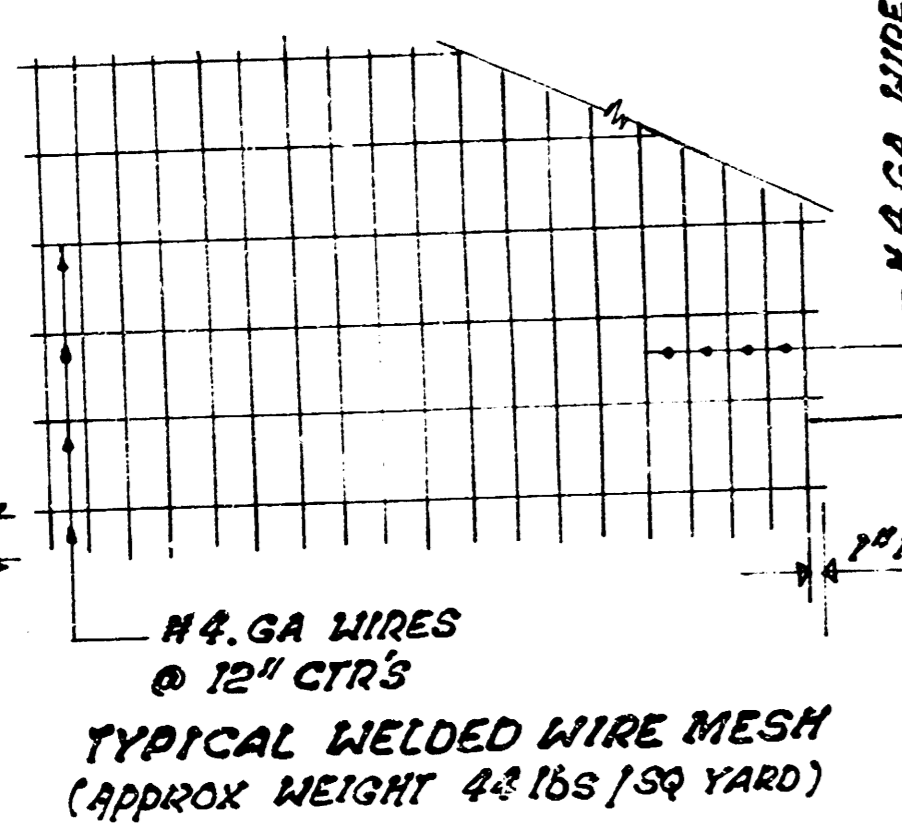
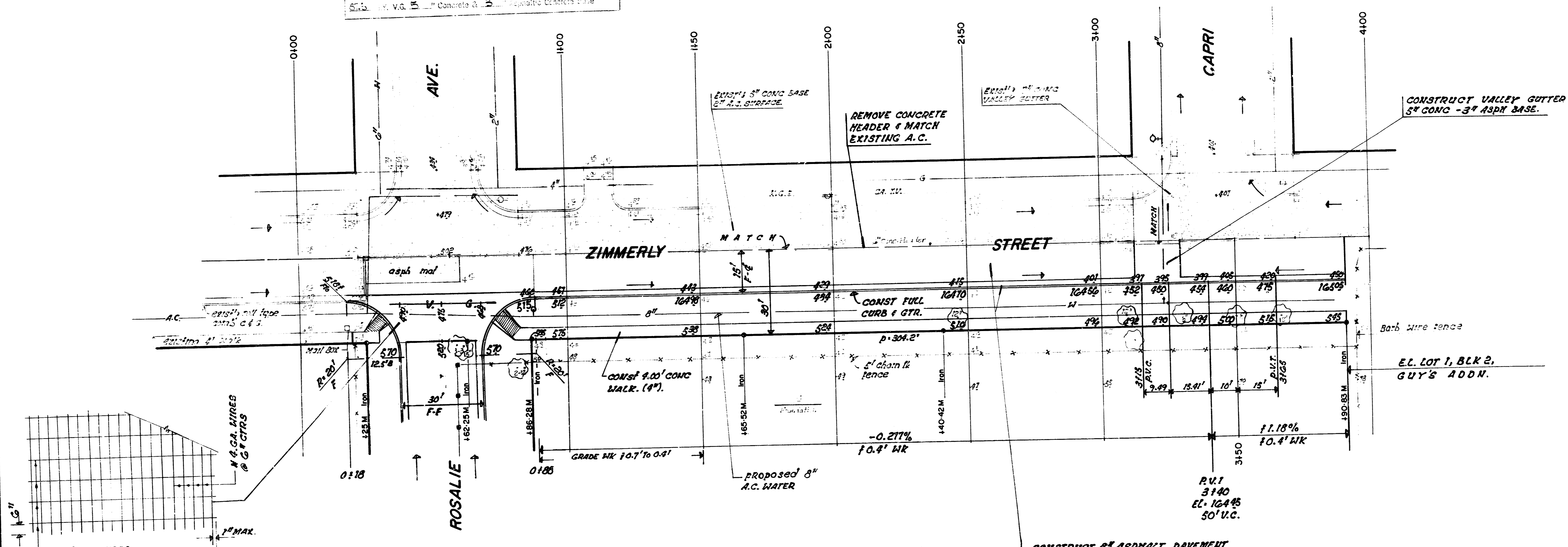
FILMED FROM THE BEST AVAILABLE COPY.....

B.M. 16571 CITY OF WICHITA BENCH MARK DISC. 32' N.
29.4' N. & BOTH.



CONSTRUCTION SPECIFICATIONS

14.4	S.Y.	1	ASPHALTIC CONC PAVT	1.5"	BITUMINOUS BASE
50.0	S.Y.	2	Asphaltic Conc. Pavement	1.5"	Bituminous Base
3.0	S.Y.	2 1/2	Bituminous Base		
12.1	L.F.	Combined	Concrete		
12.1	L.F.	Integral	Concrete		
	S.P.	4"	Concrete		
	S.P.	4"	Concrete		
	C.Y.	Excavation			
	C.Y.	Compacted Fill			
	Lbs.	Reinforcing Steel			
151.9	S.Y.	Maintenance			
		Lime or Cement			
67.5	S.Y.	Concrete & Bit	Asphaltic Concrete Base		



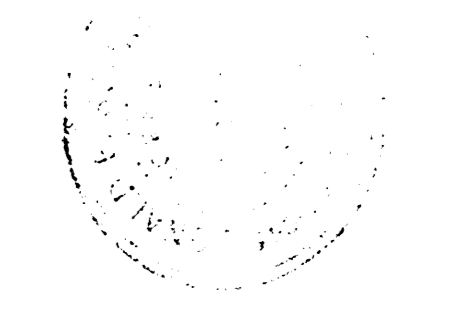
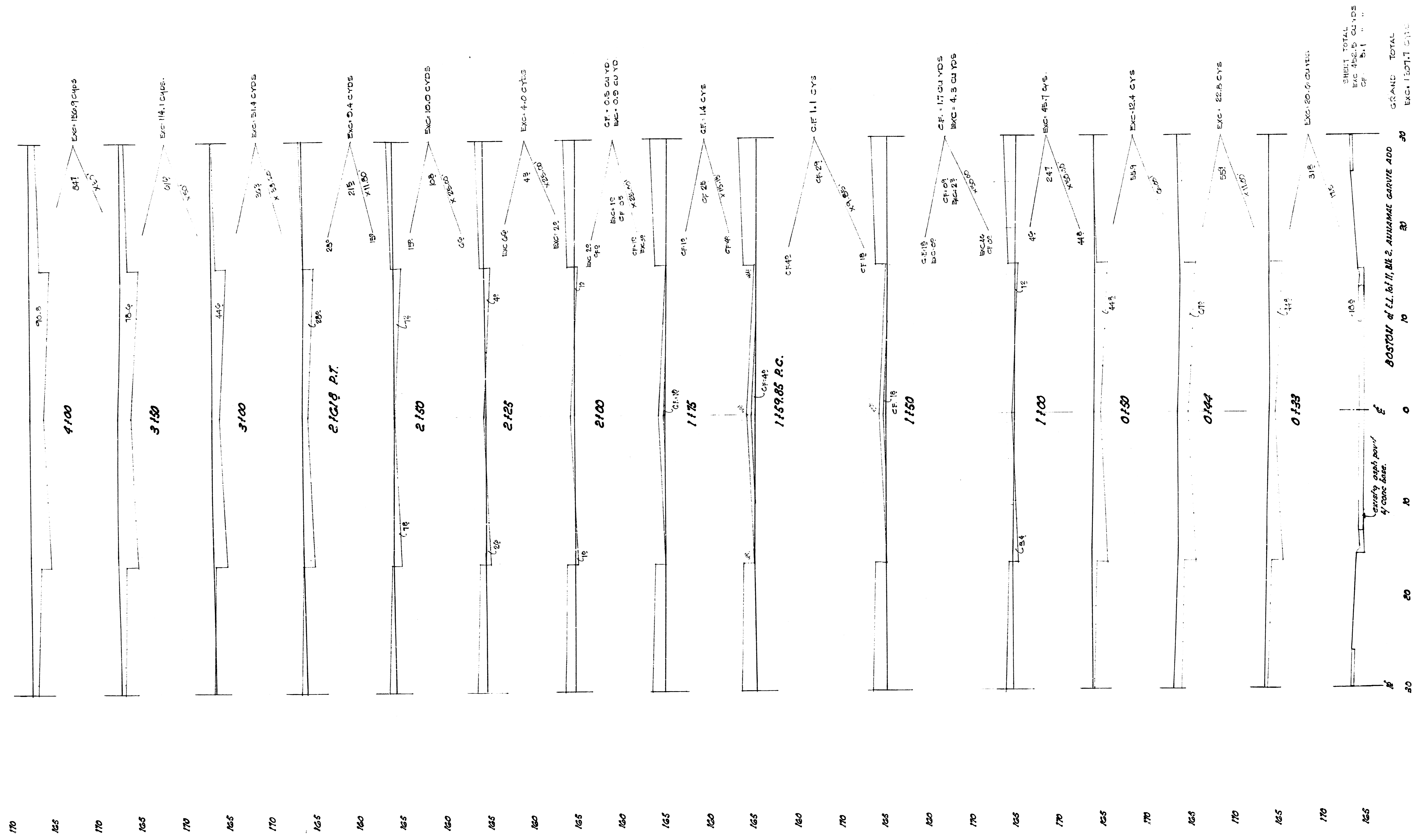
NOTE: REMOVAL OF 6" CONC HEADER AND REPLACING WITH 2" ASPHALTIC CONC IS TO BE CONSIDERED INCIDENTAL TO COST OF OTHER BID ITEMS.

EXCAVATION	COMP FILL
227.8 CU YDS	21.8 CU YDS
110% 22.8	2.2
250.6 CU YDS	24.0 CU YDS

PROJECT DESCRIPTION
So. 1/2 ZIMMERLY STREET
 W.L. ROSALIE TO E.L. LOT 1, BLK 2,
 GUY'S ADDN.
 PROJECT NUMBER
 472-72-245-81143-000-000-001

SURVEY BY: [Name]
 PLAN: ELLIOTT
 ETC

FILMED FROM THE BEST AVAILABLE COPY....



SHEET TOTAL
 EXC 482.5 CU YDS
 CF 51.1 " " " "

GRAND TOTAL
 EXC 1137.7 CU YDS
 CF 133.0 " " " "

BOSTON of E.L. 1st 11, BK 2, ANIMAME GARVE ADD
 20 10 0 1155.5

BOSTON, CAPRI. & GRAIL
 PROJ. NO. 472-76-245-01143-000-001

FILMED FROM THE BEST AVAILABLE COPY....

