

GENERAL NOTES:

- UTILITY SERVICE LINES, POLES, VALVE BOXES, METERS, AND ETCETERA ARE TO BE ADJUSTED AS NECESSARY BY OTHERS PRIOR TO CONSTRUCTION UNLESS THE PLANS SPECIFICALLY CALL FOR THEIR ADJUSTMENT BY THE CONTRACTOR OR UNLESS THE PLANS SPECIFICALLY IDENTIFY A UTILITY TO BE ADJUSTED BY ITS OWNER DURING CONSTRUCTION. EXISTING UTILITIES AND THEIR LOCATION, AS SHOWN ON THE PLANS, REPRESENT THE BEST INFORMATION OBTAINABLE FOR DESIGN. THE CONTRACTOR WILL BE REQUIRED TO WORK AROUND EXISTING UTILITIES WITHIN THE RIGHT-OF-WAY WHICH DO NOT CONFLICT WITH PROPOSED CONSTRUCTION.
- THE CONTRACTOR IS SOLELY RESPONSIBLE TO NOTIFY AND TO MAKE ANY NECESSARY ARRANGEMENTS WITH UTILITY COMPANIES FOR ANY NEEDED ADJUSTMENTS OF UTILITY FACILITIES PRIOR TO START OF WORK.
- CONTRACTOR WILL BE REQUIRED TO PROVIDE AS MINIMUM ADVANCE NOTICE OF FORTY-EIGHT (48) HOURS TO UTILITY COMPANIES PRIOR TO STARTING ANY EXCAVATION AS FOLLOWS:

KANSAS ONE CALL	687-2470
SOUTHWESTERN BELL TELEPHONE COMPANY	1-316-571-2611
CABLEVISION	262-4270 OR 263-2061
KPL GAS SERVICE	263-7511
KANSAS GAS & ELECTRIC	264-1141
CITY OF WICHITA WATER DEPARTMENT	268-4908
CITY OF WICHITA SEWER DEPARTMENT	268-4071
ARLA GAS COMPANY	942-8530 OR 263-8161
PARK DEPARTMENT FOR MARKING THEIR UTILITY LINES	264-1642
BOTANICA OFFICE	264-0451
- RUBBLE FROM THE REMOVAL OF MISCELLANEOUS STRUCTURES AND EXCAVATION WHICH IS TO BE WASTED SHALL BE DISPOSED OF ON SITES TO BE PROVIDED BY THE CONTRACTOR. THESE SITES SHALL BE APPROVED BY THE ENGINEER AS TO SUITABILITY, APPEARANCE AND SITE LOCATION. LOCATIONS THAT, IN THE OPINION OF THE ENGINEER, WILL LEAVE AN UNSIGHTLY APPEARANCE WILL NOT BE APPROVED. ALL DISPOSAL SITES MUST BE APPROVED BY THE KANSAS DEPARTMENT OF HEALTH AND ENVIRONMENT. MATERIAL EITHER STOCKPILED OR DISPOSED OF IN A FLOOD PLAIN WOULD REQUIRE A KANSAS STATE BOARD OF AGRICULTURE PERMIT. ANY MATERIAL DUMPED IN WATERS OF THE UNITED STATES OR WETLANDS IS SUBJECT TO U.S. CORPS OF ENGINEERS PERMITTING REGULATIONS. ANY MATERIAL BURIED OR STOCKPILED BEYOND APPROVED CONSTRUCTION LIMITS WOULD REQUIRE ADDITIONAL ARCHAEOLOGICAL INVESTIGATIONS UNLESS BURIED IN A PREVIOUSLY APPROVED BORROW LOCATION. THE COST OF DISPOSING OF RUBBLE FROM THE REMOVAL OF MISCELLANEOUS STRUCTURES, INCLUDING LOADING AND HAULING SHALL BE SUBSIDIARY TO THE OTHER BID ITEMS.
- THERE ARE UNDERGROUND SPRINKLER SYSTEMS WITHIN THE LIMITS OF THIS PROJECT WHICH CONFLICT WITH THE NEW CONSTRUCTION. CONTRACTOR WILL BE REQUIRED TO REMOVE SUCH IMPROVEMENTS SHOULD THEY NOT BE REMOVED BY THEIR OWNER AT THE TIME OF CONSTRUCTION OF THE PROJECT. THE CONTRACTOR WILL BE REQUIRED TO SALVAGE ALL SPRINKLER HEADS AND/OR VALVES AND GIVE SUCH MATERIAL TO THEIR OWNER. PORTIONS OF UNDERGROUND SPRINKLER SYSTEMS NOT IN CONFLICT WITH NEW CONSTRUCTION SHALL BE PROTECTED FROM DAMAGE AND SHALL REMAIN IN PLACE. ALL WORK IN CONNECTION WITH UNDERGROUND SPRINKLER SYSTEMS SHALL BE CONSIDERED AS SUBSIDIARY TO THE CONTRACT PAY ITEMS OF WORK.
- TREES AND SHRUBS IN PUBLIC RIGHT-OF-WAY WHICH ARE IN DIRECT CONFLICT WITH PROPOSED NEW CONSTRUCTION SHALL BE REMOVED BY THE CONTRACTOR WITH THE ENGINEER'S APPROVAL. TREES AND SHRUBS WHICH ARE NOT IN DIRECT CONFLICT WITH PROPOSED NEW CONSTRUCTION SHALL BE SAVED AND PROTECTED FROM DAMAGE. THIS COST IS SUBSIDIARY TO OTHER BID ITEMS.
- THE CONTRACTOR SHALL BE RESPONSIBLE FOR PRESERVING PROPERTY IRONS. THE CONTRACTOR WILL BE REQUIRED TO RE-ESTABLISH ANY PROPERTY IRONS WHICH ARE DAMAGED OR DESTROYED BY HIS CONSTRUCTION OPERATIONS. SUCH IRONS SHALL BE RE-ESTABLISHED BY A LICENSED LAND SURVEYOR OR A LICENSED PROFESSIONAL ENGINEER IN ACCORDANCE WITH STATE LAWS.
- ANY FENCE REMOVED FOR CONSTRUCTION SHALL BE REPAIRED IN A CONDITION EQUAL TO, OR BETTER THAN ORIGINAL, AT NO ADDITIONAL COST TO THE OWNER. THIS COST SHALL BE CONSIDERED AS SUBSIDIARY TO OTHER BID ITEMS.
- THE CONTRACTOR SHALL GIVE ALL PROPERTY OWNERS AND/OR TENANTS OF DEVELOPED PROPERTY ABUTTING THE PROJECT LIMITS A MINIMUM OF TEN (10) DAYS ADVANCE NOTICE PRIOR TO START OF CONSTRUCTION.
- THE CONTRACTOR MUST EXAMINE THE CONSTRUCTION SITE PRIOR TO BIDDING AND BE SATISFIED AS TO THE WORK SHOWN FOR COMPLETION. AFTER BIDS HAVE BEEN RECEIVED, THE CONTRACTOR SHALL NOT ASSERT THAT THERE WAS A MISUNDERSTANDING OF THE QUANTITIES OF WORK OR OF THE NATURE OF THE WORK TO BE COMPLETED.
- ALL CONSTRUCTION AND MATERIALS, UNLESS OTHERWISE NOTED, TO COMPLY WITH CITY OF WICHITA SPECIFICATIONS AND STANDARDS.
- RAILROAD TIES AND POWER POLES WITHIN THE LIMITS OF THIS PROJECT ARE STOCKPILED FOR OWNER. THIS COST IS SUBSIDIARY TO THE SITE PREPARATION AND RESTORATION BID ITEM.
- EARTHWORK COMPUTATION FOR BOTH ALTERNATES ARE BASED ON ALTERNATE 2 WHICH IS TO THE BOTTOM OF THE 5" RECYCLED ASPH. BASE.

BOTANICA PARKING LOT EXPANSION

PROJ. NO. 472-82571

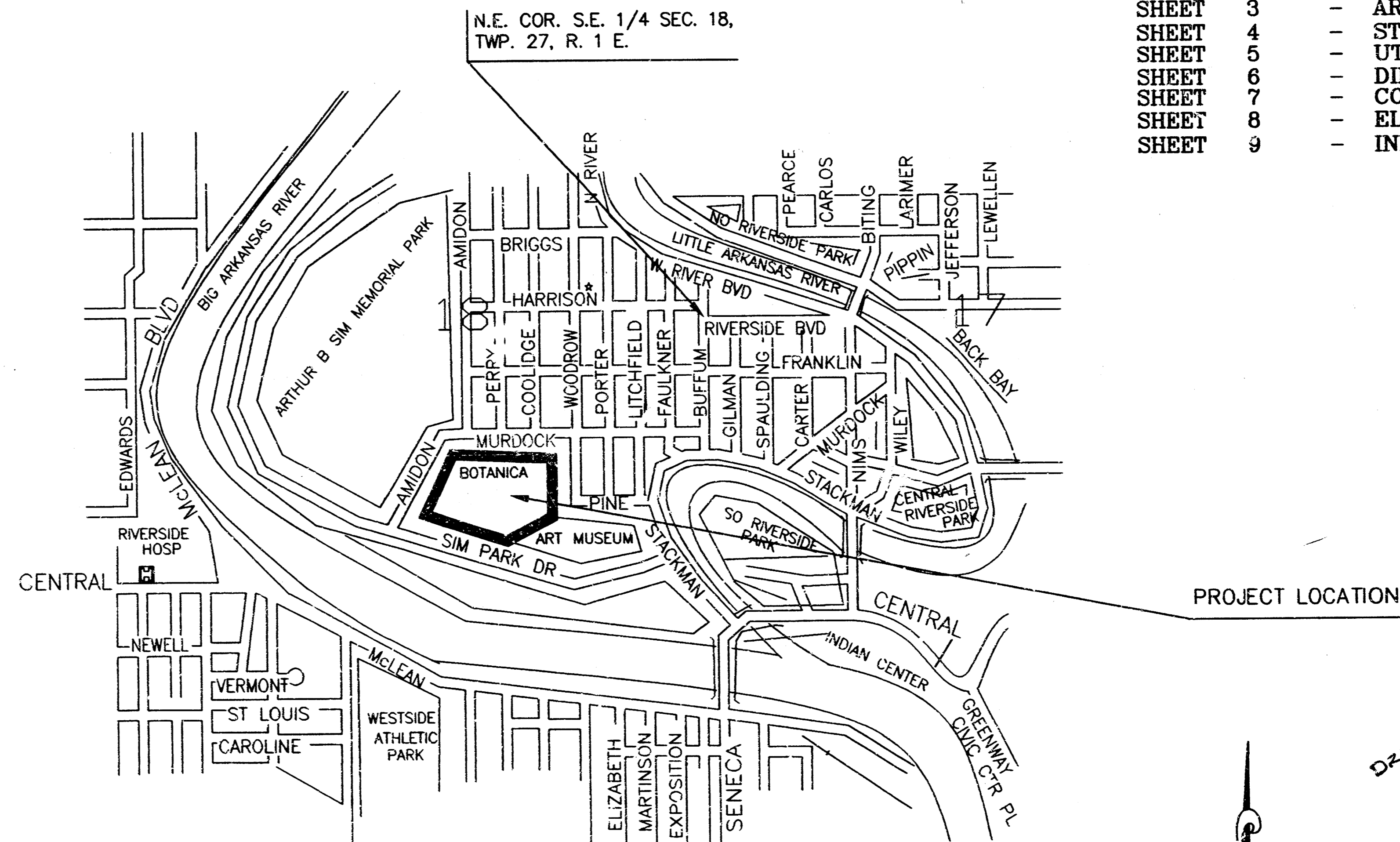
INDEX NO. 791160

CITY OF WICHITA, KANSAS

M. E. LINDEBAK - CITY ENGINEER

INDEX OF SHEETS

SHEET 1	-	TITLE SHEET
SHEET 2	-	EXISTING TOPO.
SHEET 3	-	AREAS TO BE REMOVED
SHEET 4	-	STORM WATER SEWER PLAN
SHEET 5	-	UTILITY CONDUIT PLAN
SHEET 6	-	DIMENSIONS & CURVE DATA
SHEET 7	-	COORDINATES DATA
SHEET 8	-	ELEVATIONS & CONSTRUCTION DATA
SHEET 9	-	INLET DETAILS



DRAINAGE BOOKED
12-19-95
M.E.L.
0-273

M. E. Lindebak
 3/13/95

BOTANICA PARKING LOT
 TITLE SHEET
 INDEX # 791160
 SHEET 1 OF 9
 DRAWN BY: [] DESIGN BY: []

NORTH

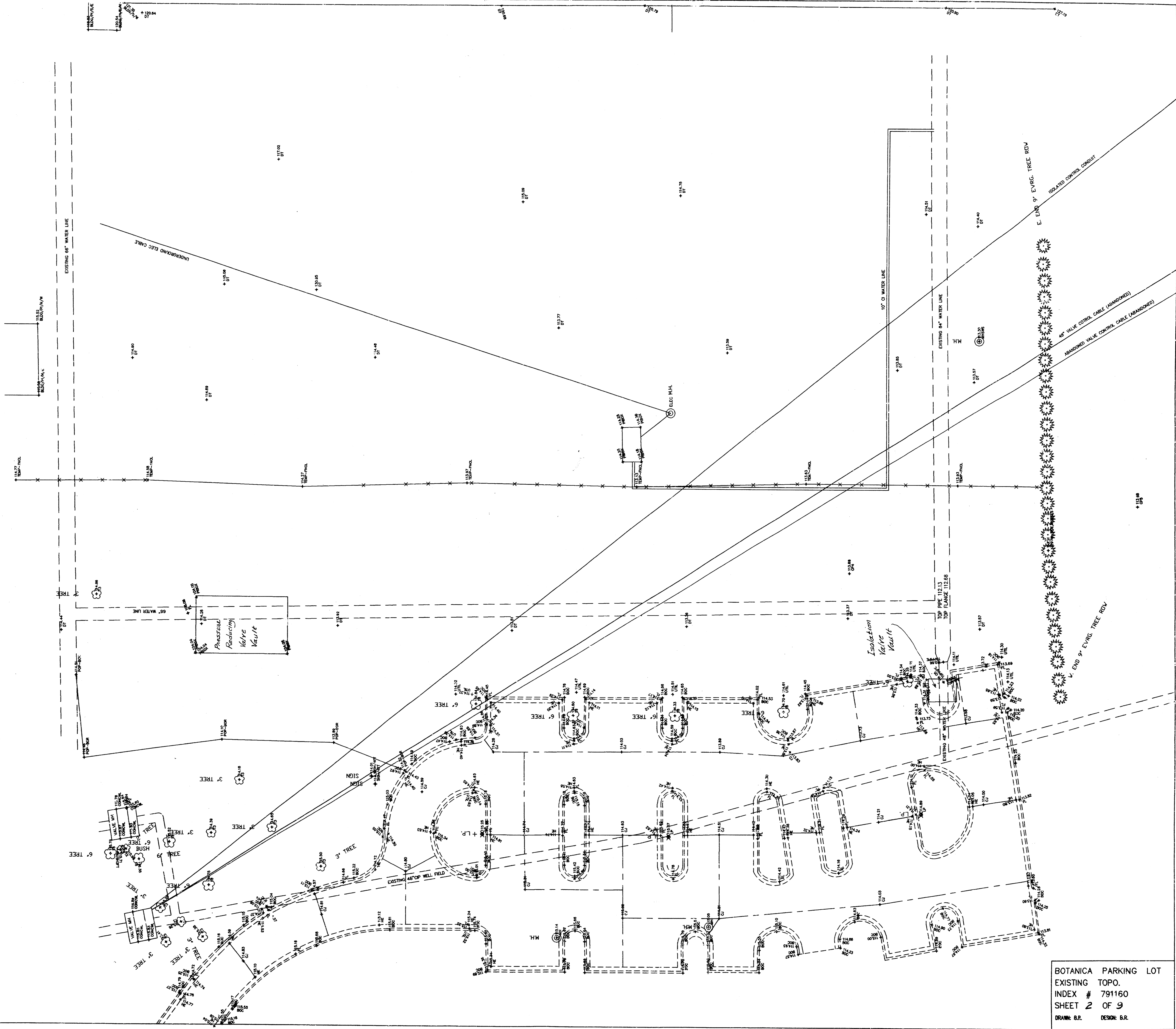


SCALE 1" = 20'

CL MURDOCK

EXISTING TOPO. FOR
BOTANICA PROPOSED PARKING LOT EXPANSION

AMIDON



BOTANICA PARKING LOT
 EXISTING TOPO.
 INDEX # 791160
 SHEET 2 OF 9
 DRAWN: B.R. DESIGN: B.R.

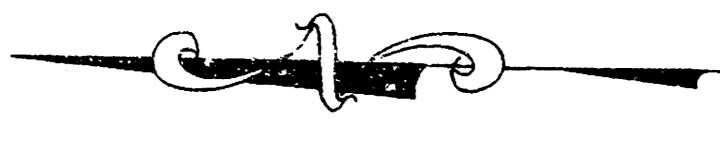
CL MURDOCK
231.34' 14.02'

AMIDON

AREAS TO BE REMOVED FOR
BOTANICA PROPOSED PARKING LOT EXPANSION

AREA TO BE REMOVED

SCALE 1" = 20'



N 1000.00
E 3000.00

AMIDON

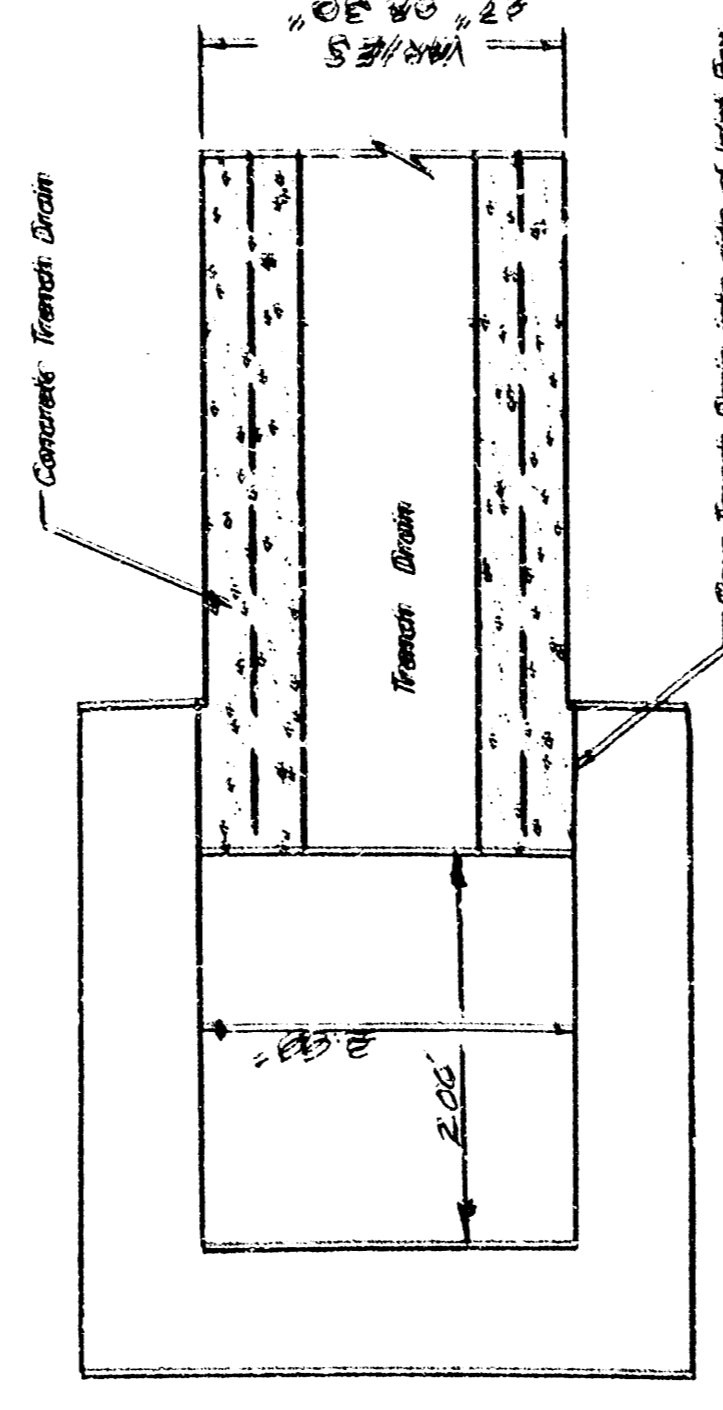
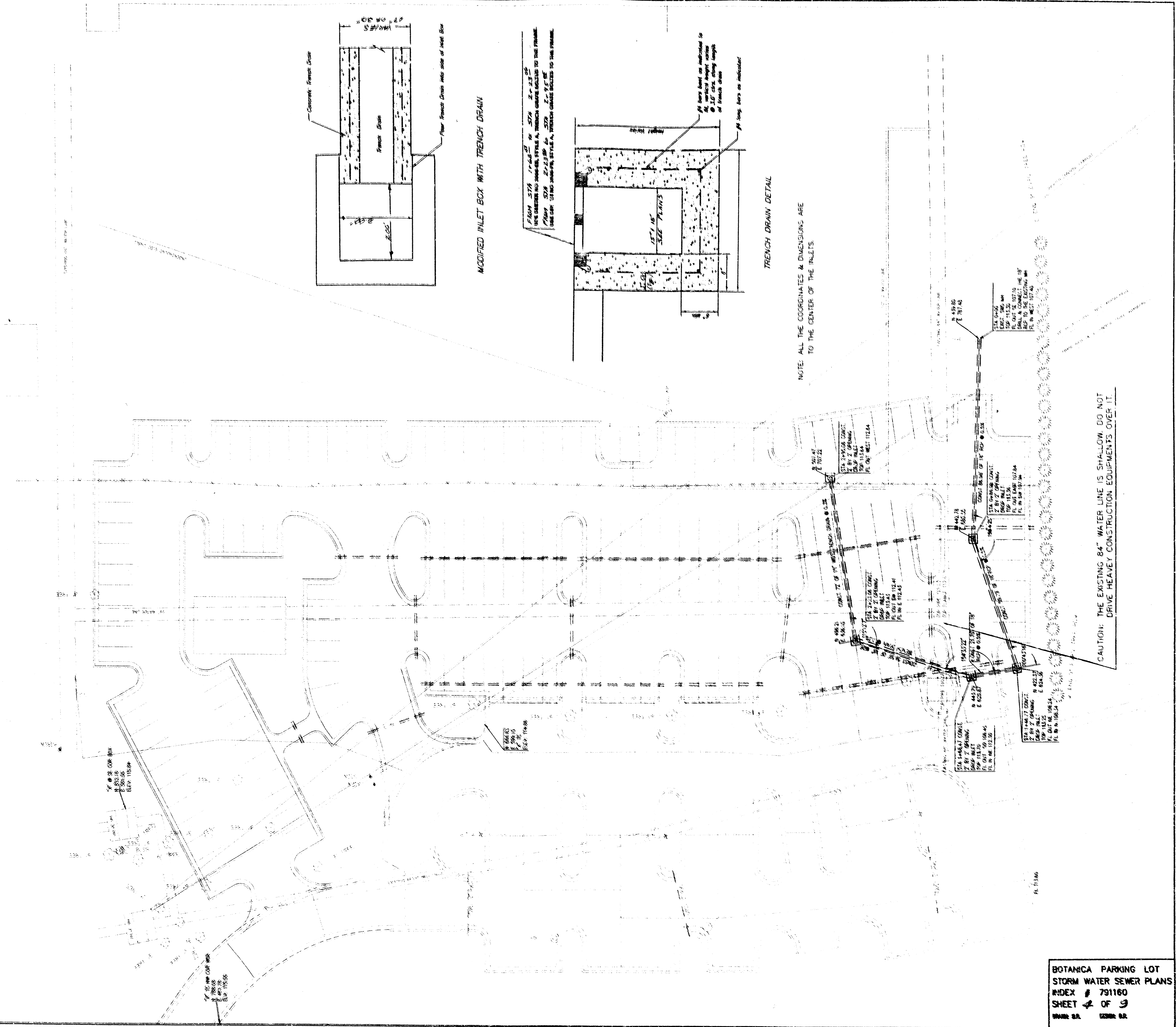
CL MURDOCK

N 1000.00
E 3000.00

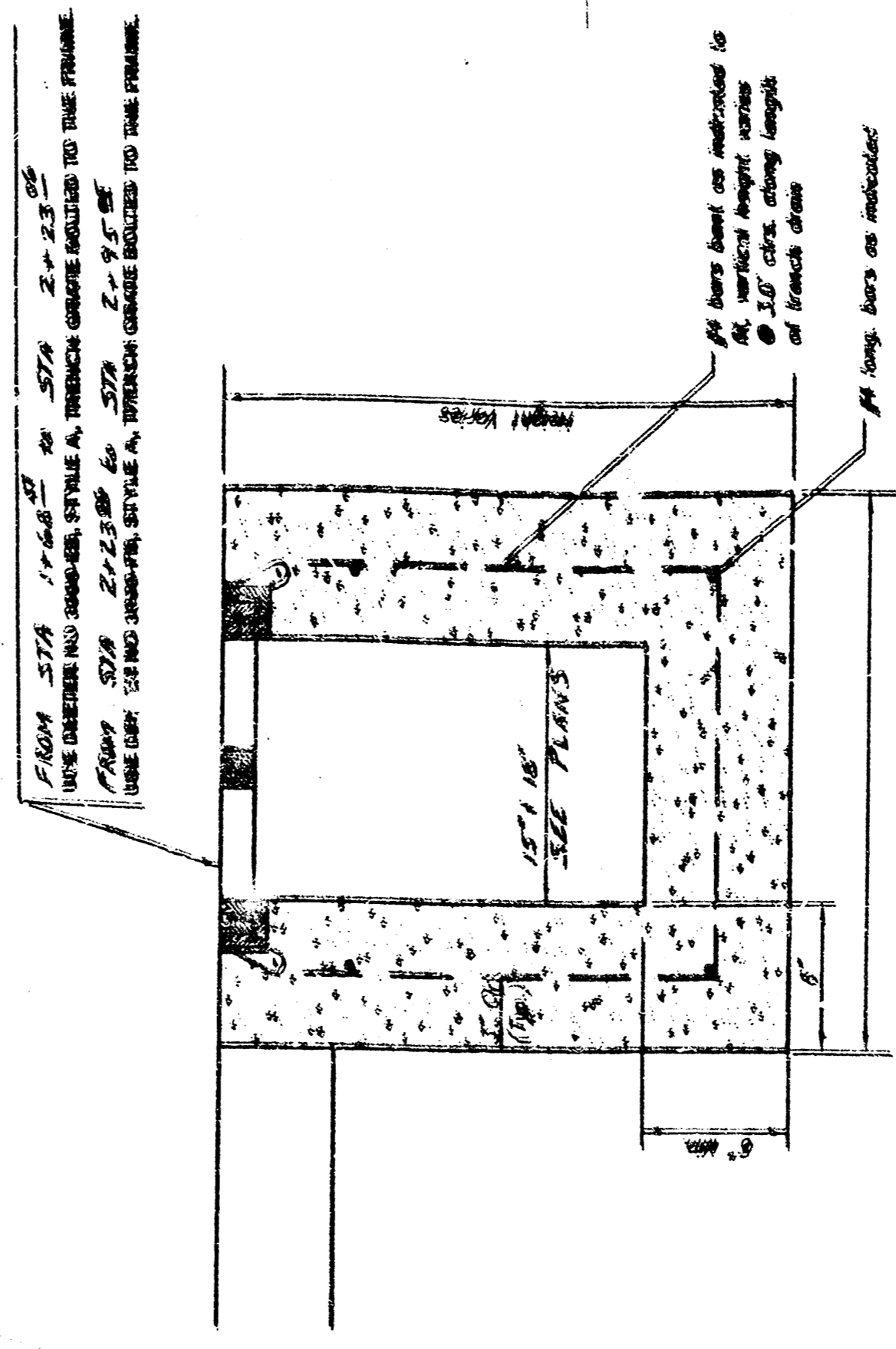
STORM WATER SEWER PLANS FOR BOTANICA PROPOSED PARKING LOT EXPANSION

SCALE 1" = 20'

BENCH MARK: 115.09
SQUARE CUT ON TOP OF CURB 20.4' W. & 98.4' N. OF CL AMIDON & MURDOCK



MODIFIED INLET BOX WITH TRENCH DRAIN



TRENCH DRAIN DETAIL

NOTE: ALL THE COORDINATES & DIMENSIONS ARE TO THE CENTER OF THE INLETS.

CAUTION: THE EXISTING 84" WATER LINE IS SHALLOW. DO NOT DRIVE HEAVY CONSTRUCTION EQUIPMENTS OVER IT.

BOTANICA PARKING LOT
 STORM WATER SEWER PLANS
 INDEX # 791160
 SHEET 4 OF 9
 DRAWN BY: [signature]
 CHECKED BY: [signature]

N 1000.00
E 500.00
MILE

N 1000.00
E 875.36
POINT

AMIDON

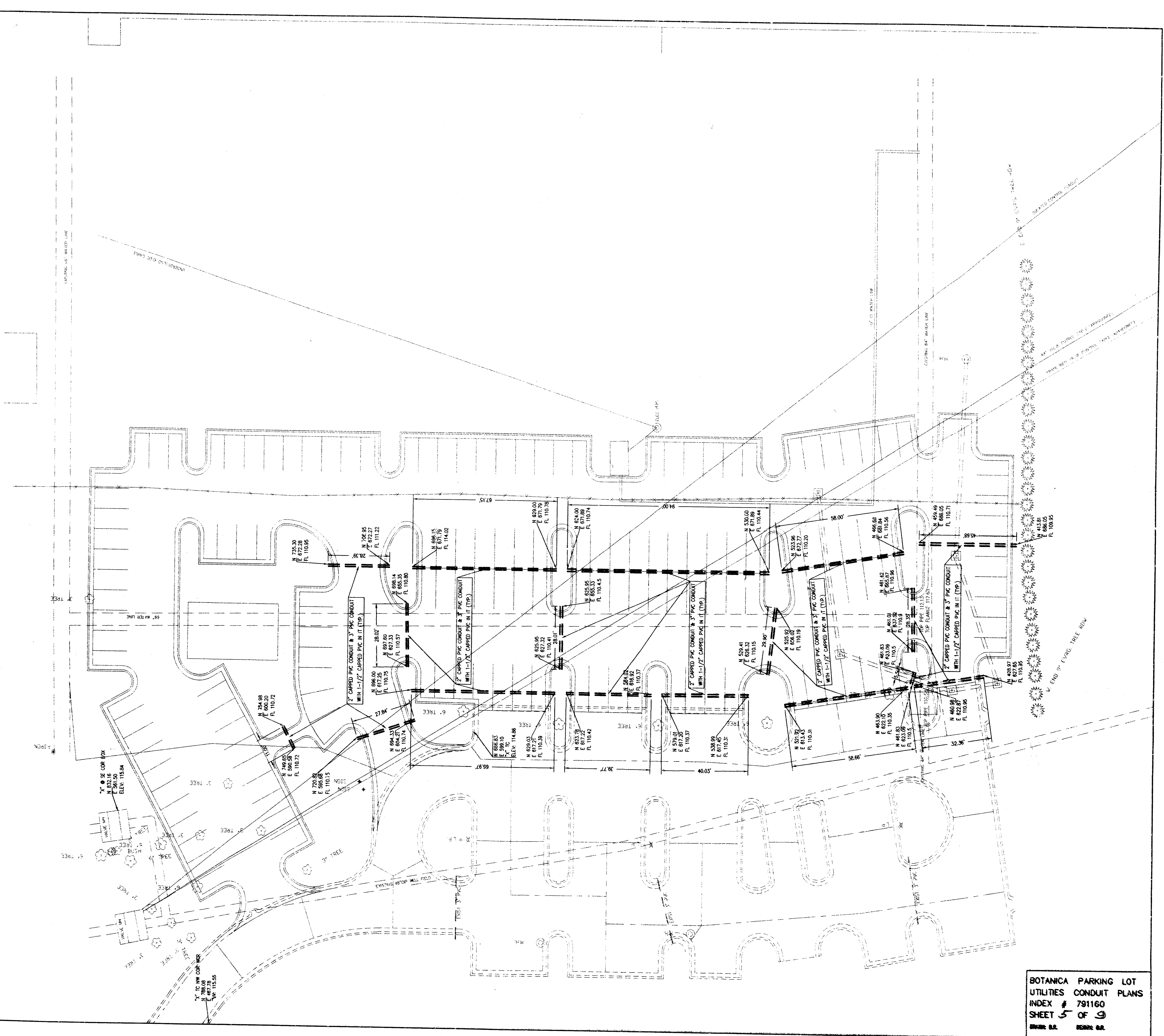
CL MURDOCK

UTILITIES CONDUIT PLANS FOR BOTANICA PROPOSED PARKING LOT EXPANSION

SCALE 1" = 20'

NOTE: ALL COORDINATES & ELEVATIONS ARE FOR THE 3" PVC. THE 2" PVC IS 1" TO THE WEST OR NORTH & 5' ABOVE IT. THE 1" PVC IS FOR FUTURE ELECTRICAL CONDUIT. THE 3" PVC CONDUIT IS 1-1/2" CAPPED PVC IN IT IS FOR FUTURE IRRIGATION SYSTEM.

B.M. 115.05 SOURCE OUT ON TOP OF CURB 20.4' W & 54.4' N. OF CL. AMIDON & MURDOCK.



BOTANICA PARKING LOT
UTILITIES CONDUIT PLANS
INDEX # 791160
SHEET 5 OF 9
SCALE: 1" = 20'

N 1000.00
E 500.00

144.02'

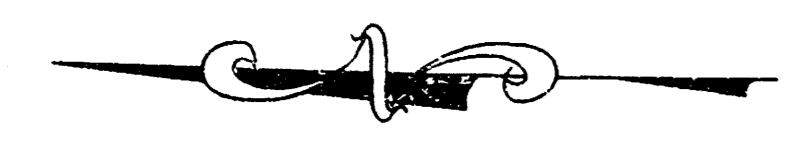
153.00'

231.34'

N 1000.00
E 500.00

CL MURDOCK

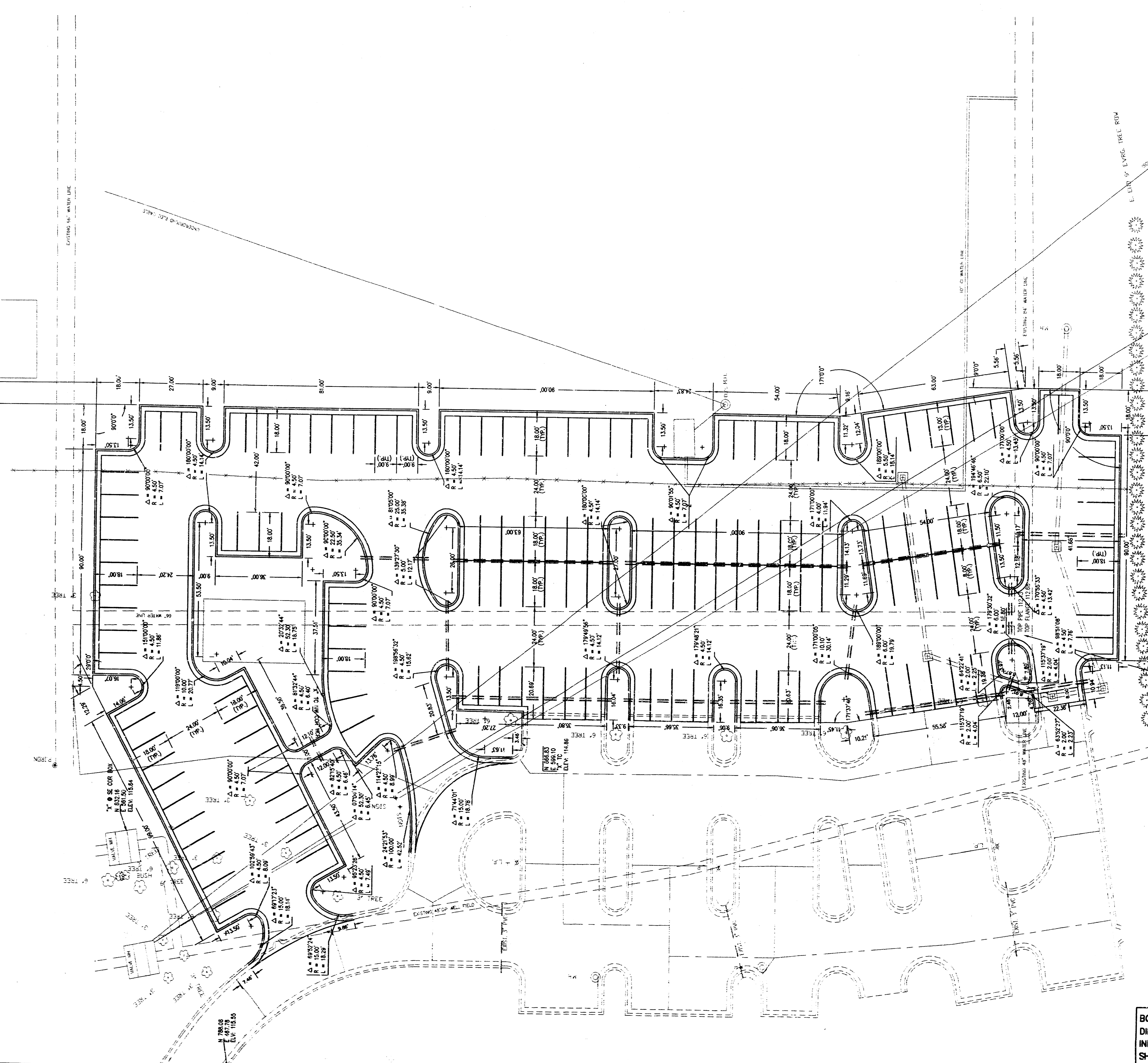
AMIDON



SCALE 1" = 20'

**DIMENSIONS & CURVE DATA FOR
BOTANICA PROPOSED PARKING LOT EXPANSION**

NOTE: ALL OF THE DIMENSIONS AND CURVE DATA ARE TO THE BACK OF CURB.
BENCH MARK: 115.09
SQUARE CUT ON TOP OF CURB 20.4' W. & 56.4' N. OF CL AMIDON & MURDOCK.



CAUTION: THE EXISTING 84" WATER LINE IS SHALLOW. DO NOT
DRIVE HEAVY CONSTRUCTION EQUIPMENTS OVER IT.

**BOTANICA PARKING LOT
DIMENSIONS & CURVE DATA
INDEX # 791160
SHEET 6 OF 9**

DATE: D.D. DESIGN: D.A.

N 1000.00
E 893.38
IRON

N 1000.00
E 893.38
IRON

CL MURDOCK

AMIDON

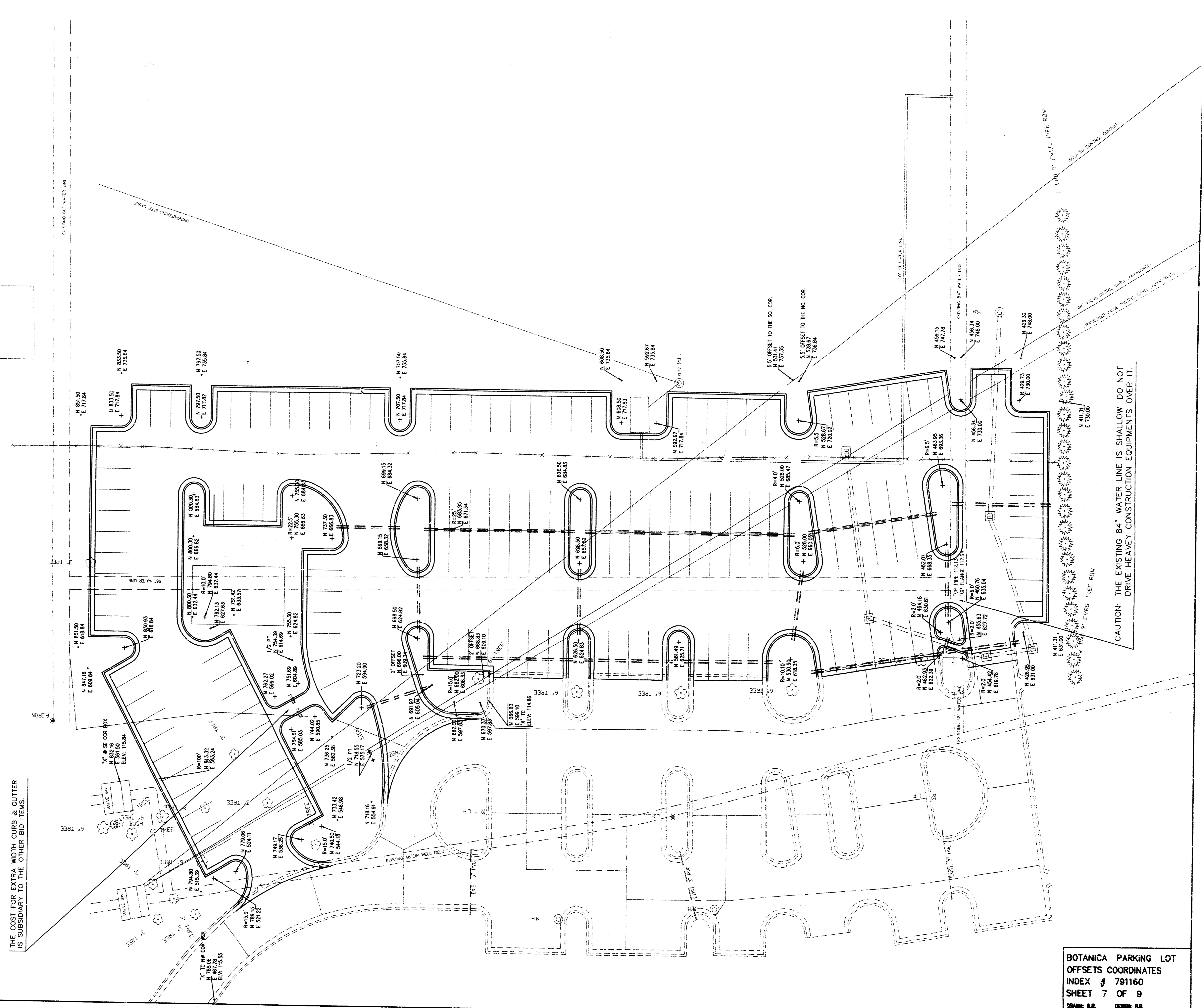
OFFSETS & CENTER COORDINATES FOR BOTANICA PROPOSED PARKING LOT EXPANSION

NOTE: ALL OF THE COORDINATES GIVEN FOR STAKING OFFSETS ARE
4.5' TO THE BACK OF CURB UNLESS OTHERWISE NOTED.
ALL OF THE DIMENSIONS AND CURVE DATA ARE TO THE BACK OF CURB.
ALL OF THE RADII ARE 4.5' TO THE BACK OF CURB UNLESS
OTHERWISE NOTED.

BENCH MARK: 115.09
SQUARE CUT ON TOP OF CURB 20.4' W. & 56.4' N. OF CL AMIDON & MURDOCK.

THE COST FOR EXTRA WIDTH CURB & GUTTER
IS SUBSIDIARY TO THE OTHER BID ITEMS.

SCALE 1" = 20'

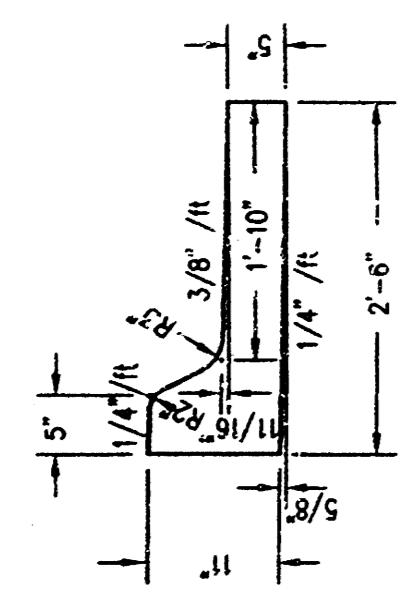


BOTANICA PARKING LOT
 OFFSETS COORDINATES
 INDEX # 791160
 SHEET 7 OF 9
 DRAWN: B.L. DESIGN: B.L.

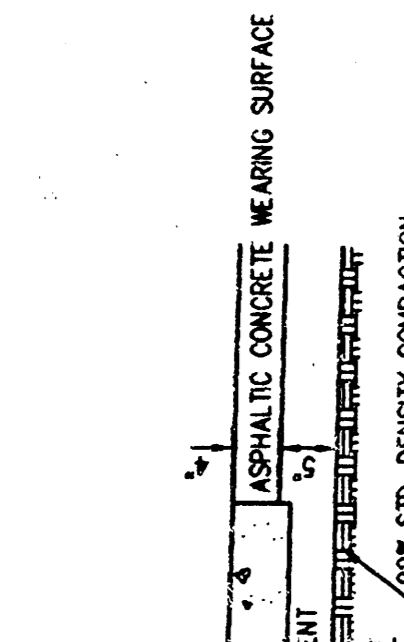
N 1000.00
E 5000.00
RIP
AMIDON

CL MURDOCK

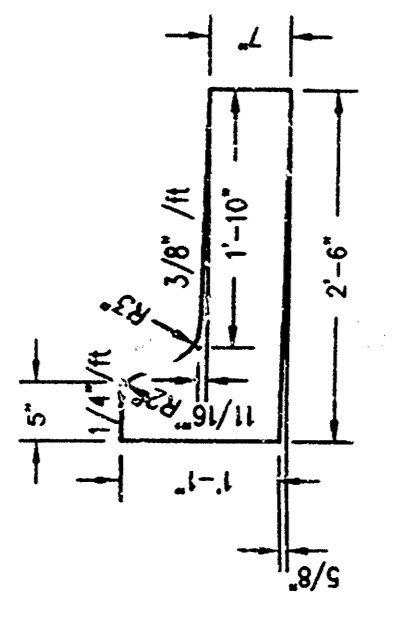
ELEVATIONS & CONSTRUCTION INFORMATION FOR
BOTANICA PROPOSED PARKING LOT EXPANSION



ALTERNATE NO. 2
Not to Scale



ALTERNATE NO. 1
Not to Scale



SCALE 1" = 20'

PAVEMENT SURFACE
USE SQUARES
JOINT SPACING (MIN. DIM.)
1/2" COIL BOND
BREAKER
JOINT TO BE SAWS IN TWO
SEPARATE OPERATIONS
INDUCED CRACKING



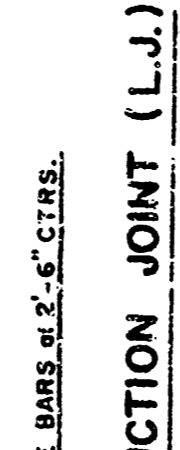
DETAIL A
Not to Scale



LONGITUDINAL JOINT DETAIL (L.J.)
Not to Scale



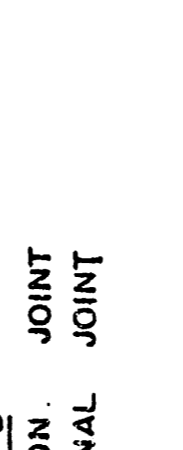
OPTIONAL LONGITUDINAL CONSTRUCTION JOINT (L.C.J.)
(Alternate L.J.)
Not to Scale



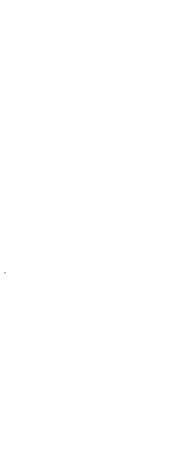
CONTRACTION JOINT DETAIL (C.J.)
Not to Scale



KEYWAY DETAIL
Not to Scale



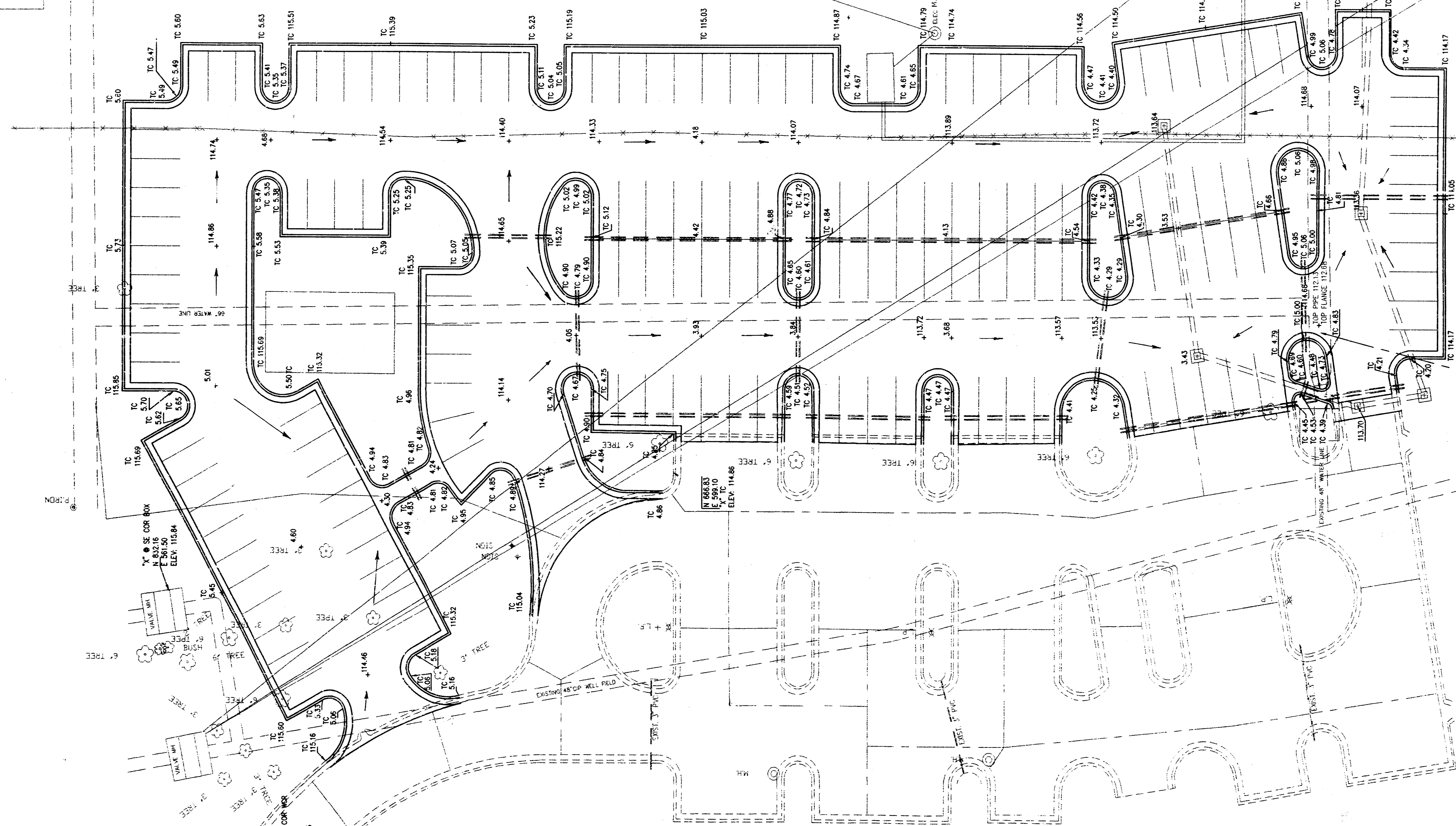
OPTIONAL CONTRACTION CONSTRUCTION JOINT (C.C.J.)
(Alternate C.J.)
Not to Scale



EXPANSION JOINT
Not to Scale



LEGEND
C.J. IDENTIFIES CONTRACTION JOINT
L.J. IDENTIFIES LONGITUDINAL JOINT



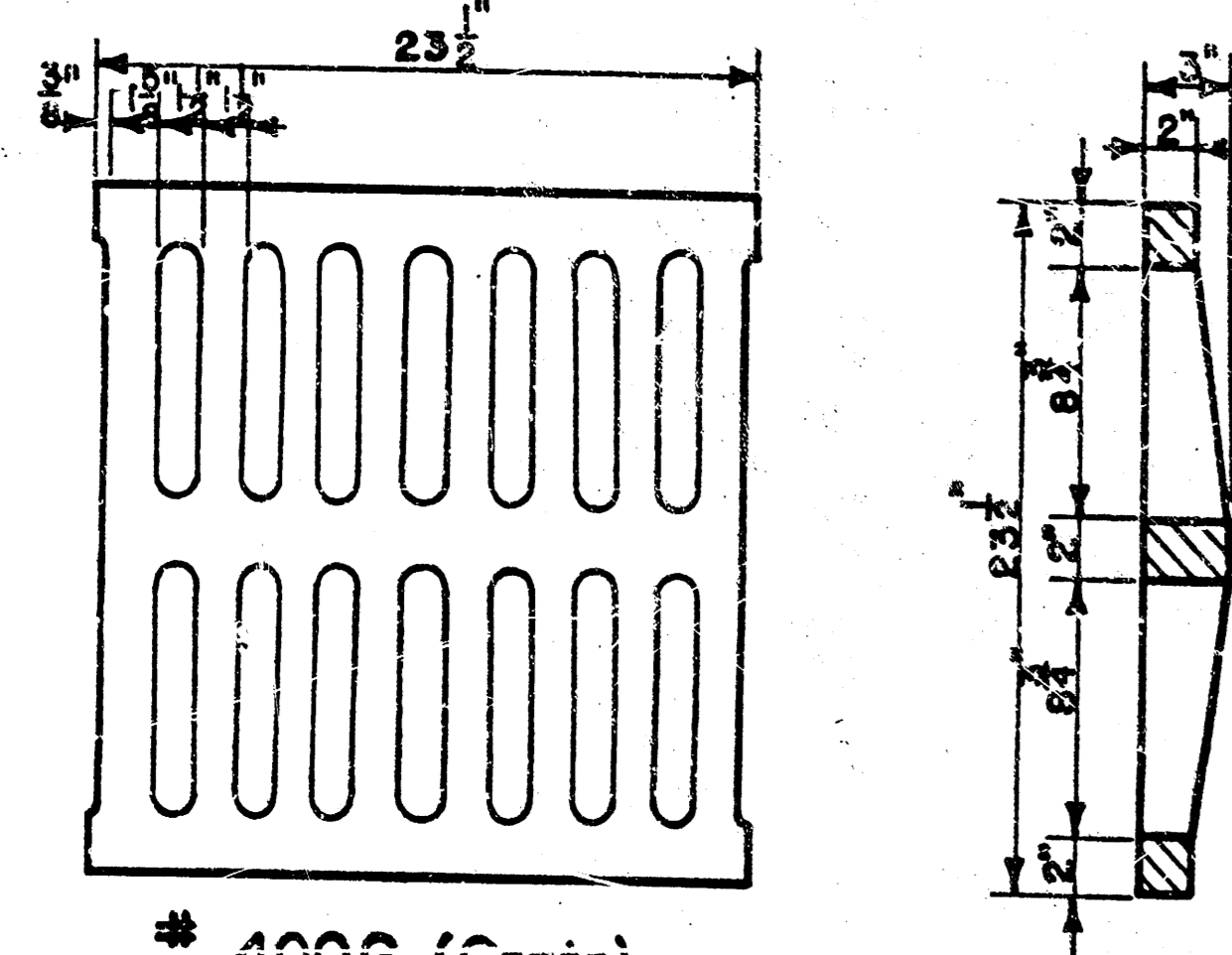
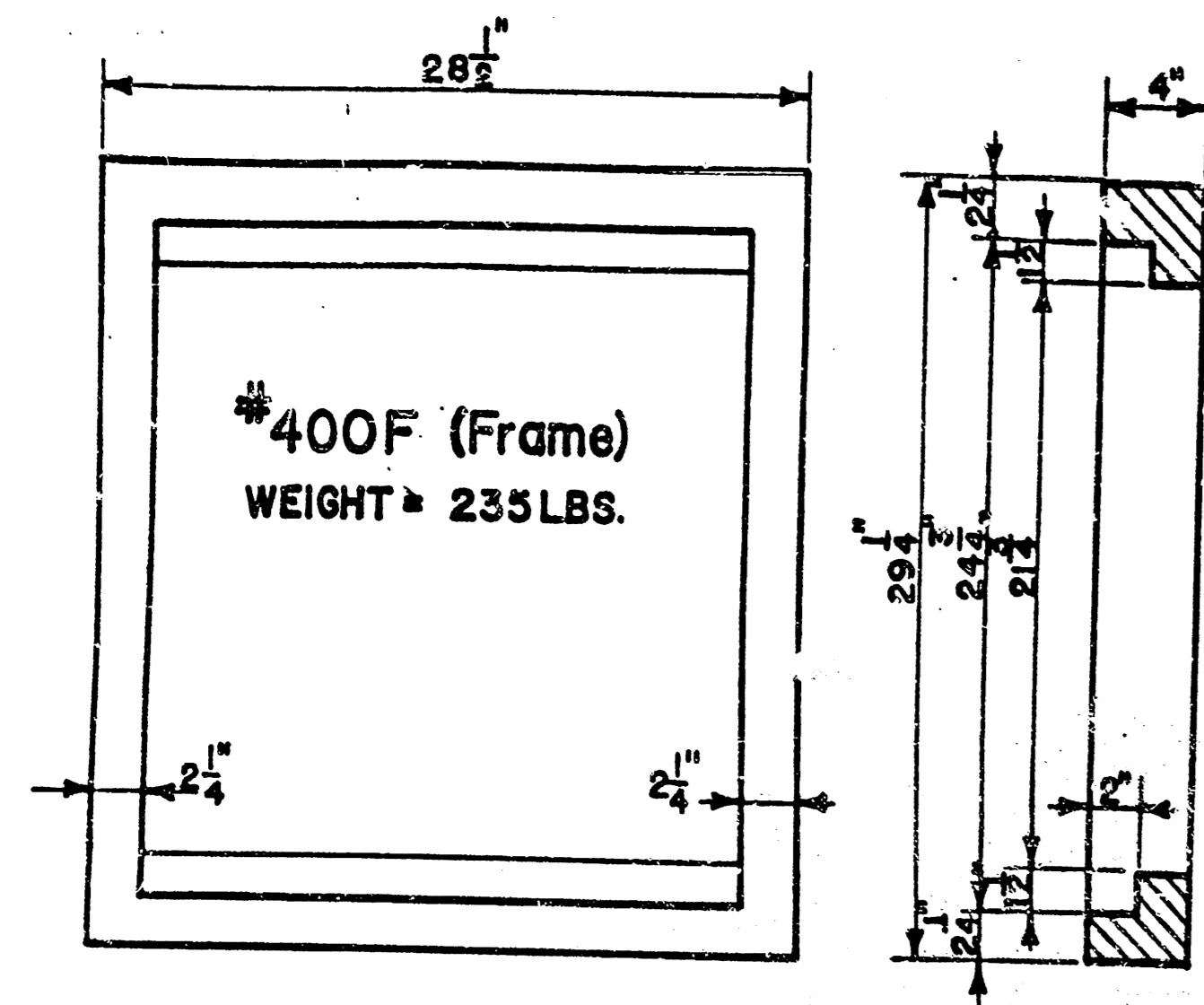
BENCH MARK: 115.09
SQUARE CUT ON TOP OF CURB 20.4' W. & 56.4' N. OF CL. MIDON & MURDOCK.

CAUTION: THE EXISTING 84" WATER LINE IS SHALLOW. DO NOT
DRIVE HEAVY CONSTRUCTION EQUIPMENTS OVER IT.

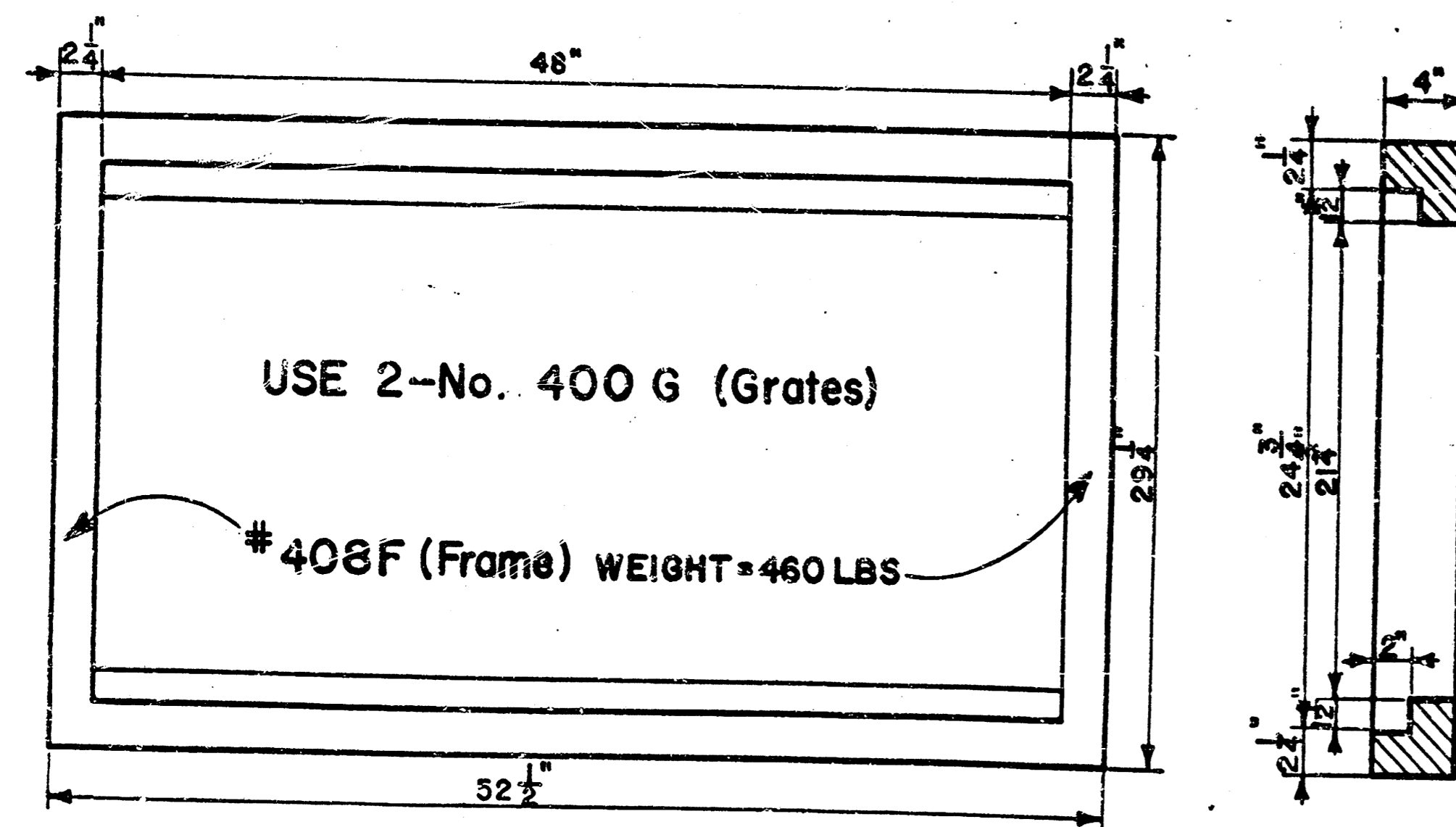
BOTANICA PARKING LOT
ELEV. & CONST. PLAN
INDEX # 791160
SHEET 8 OF 9
DRAWN BY: DESIGN BY:

10-0-0-01

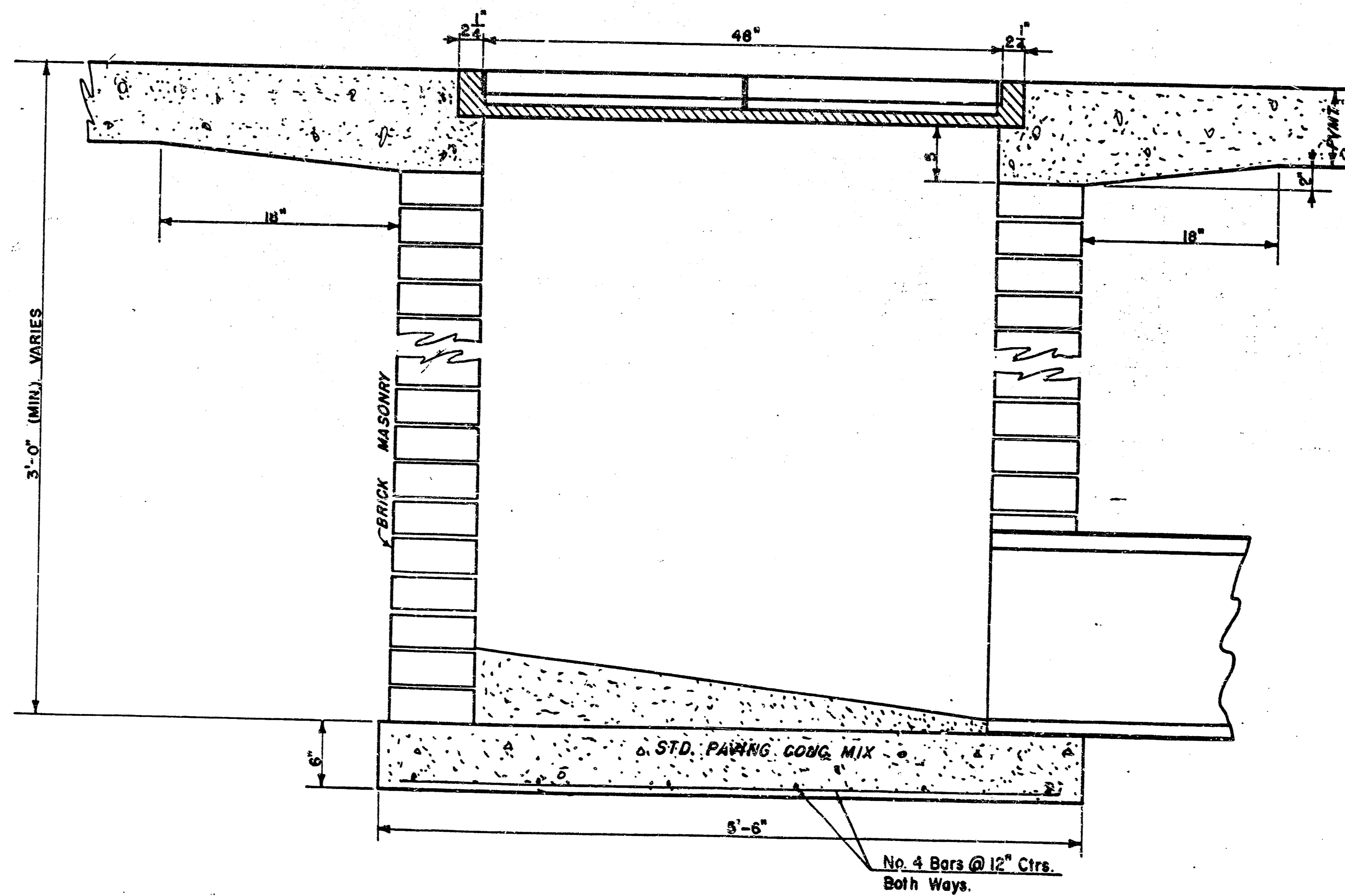
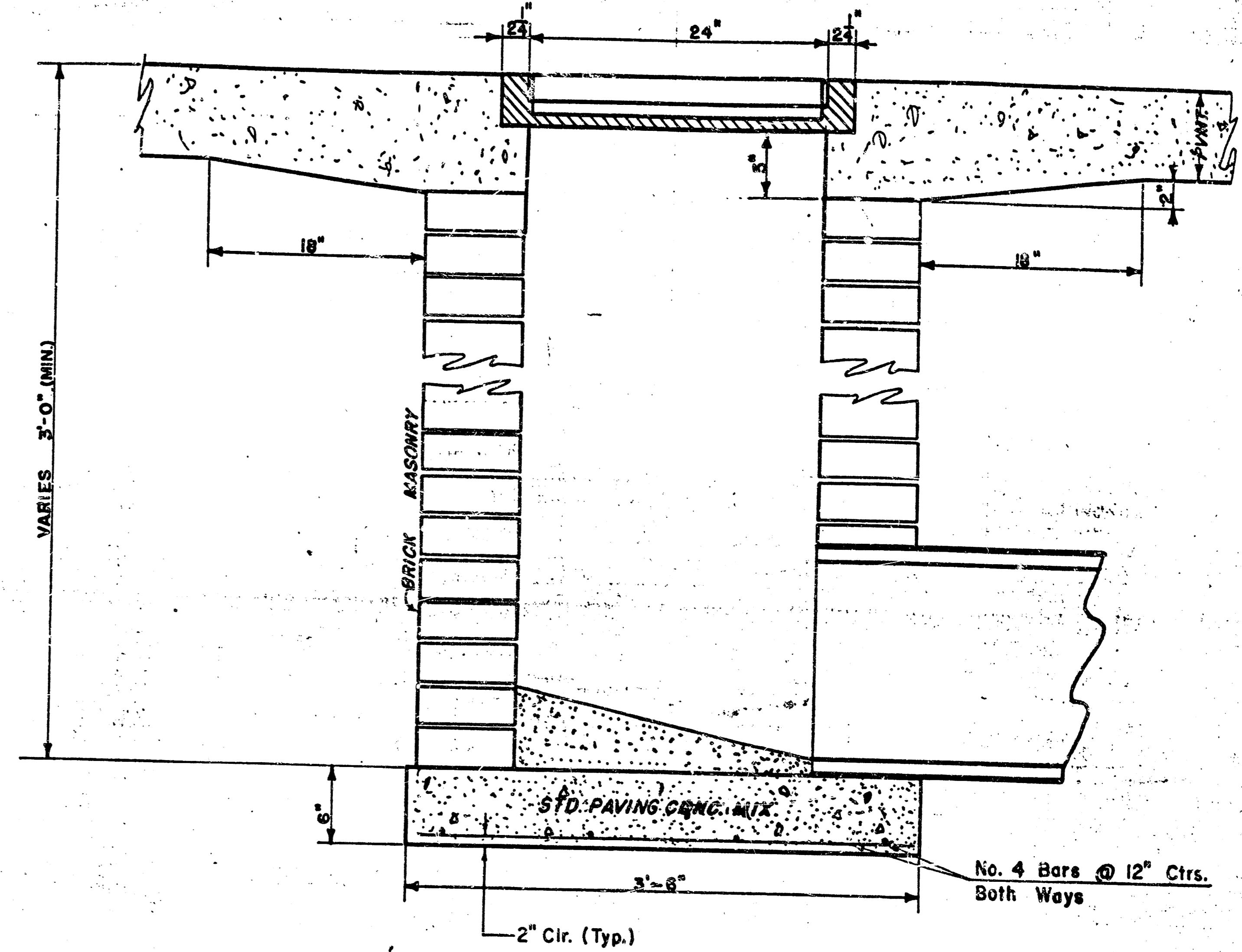
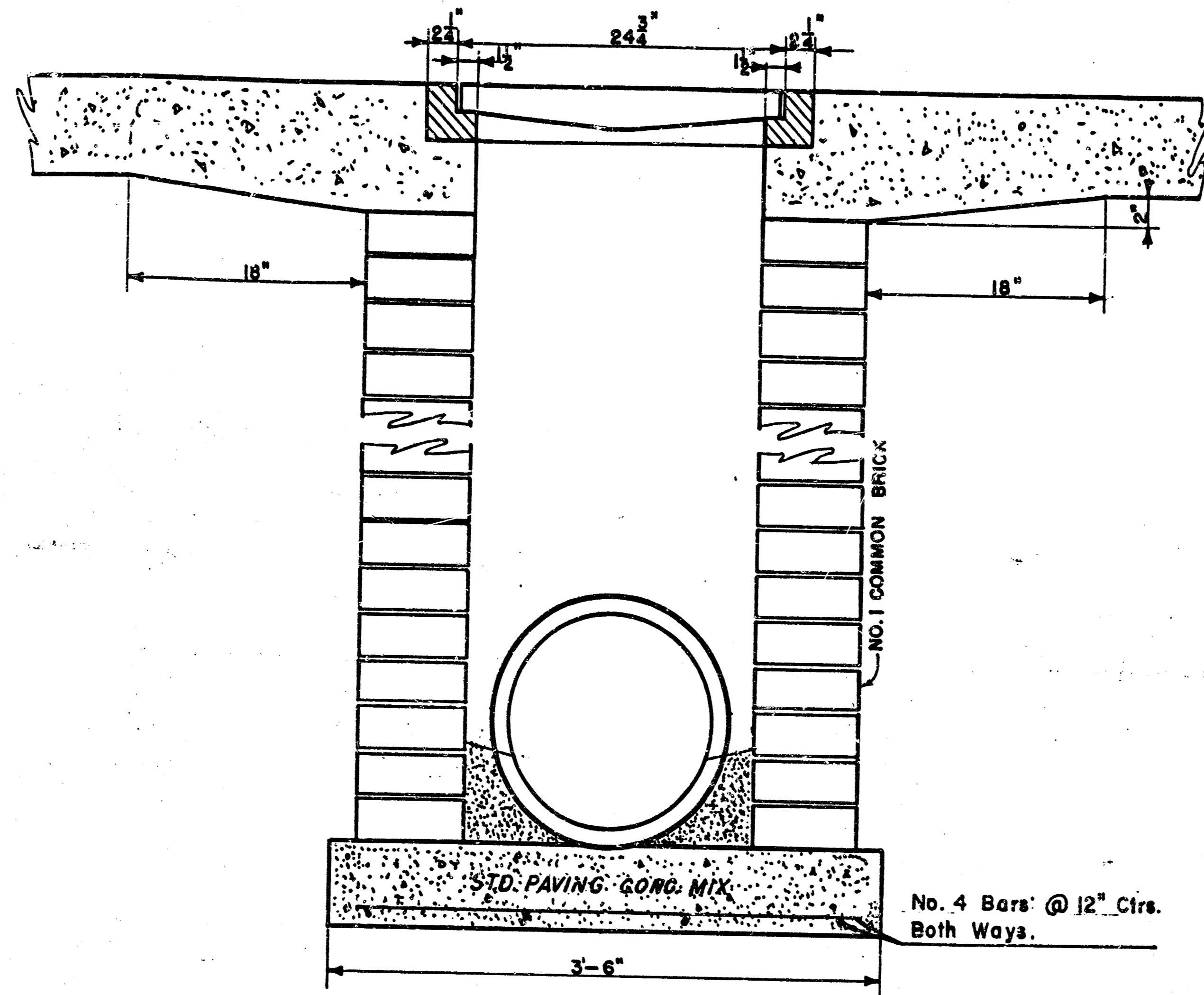
NOTE: Grates shall be imprinted on the top surface with "CITY OF WICHITA" using letters at least 1" in height. Other marking methods may be used only if approved by the engineer.



24"x24" Frame & Grate Detail



Double 24"x24" Frame Detail



DROP INLET DETAILS

M.E. Lindebak, City Engineer
 City of Wichita, Kansas
 Project INDEX NO. 79/160
 Project No. 472-82571

Date: _____ SHEET
 Scale: 1-1/2" = 1'-0" 9 OF 9