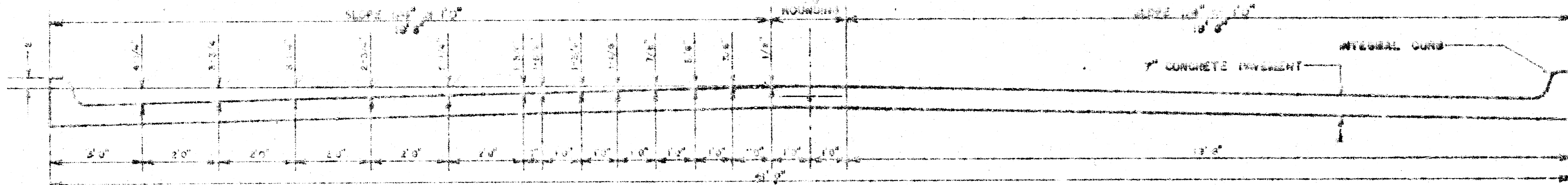


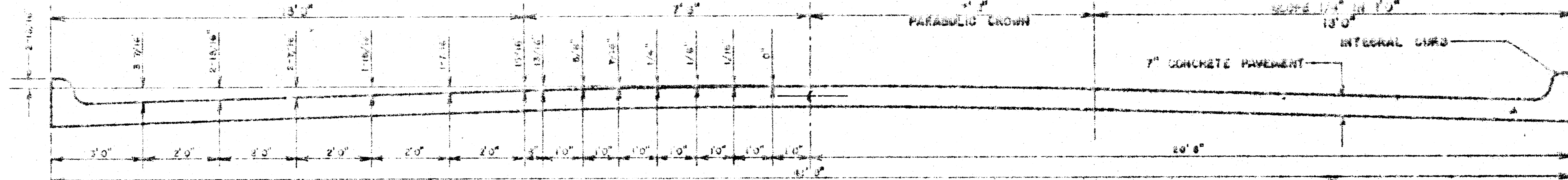
**BOUNOUS STREET**

PROJ. NO. DAKS577089  
CITY OF WICHITA, KANSAS  
R. W. LINN, CITY ENGINEER

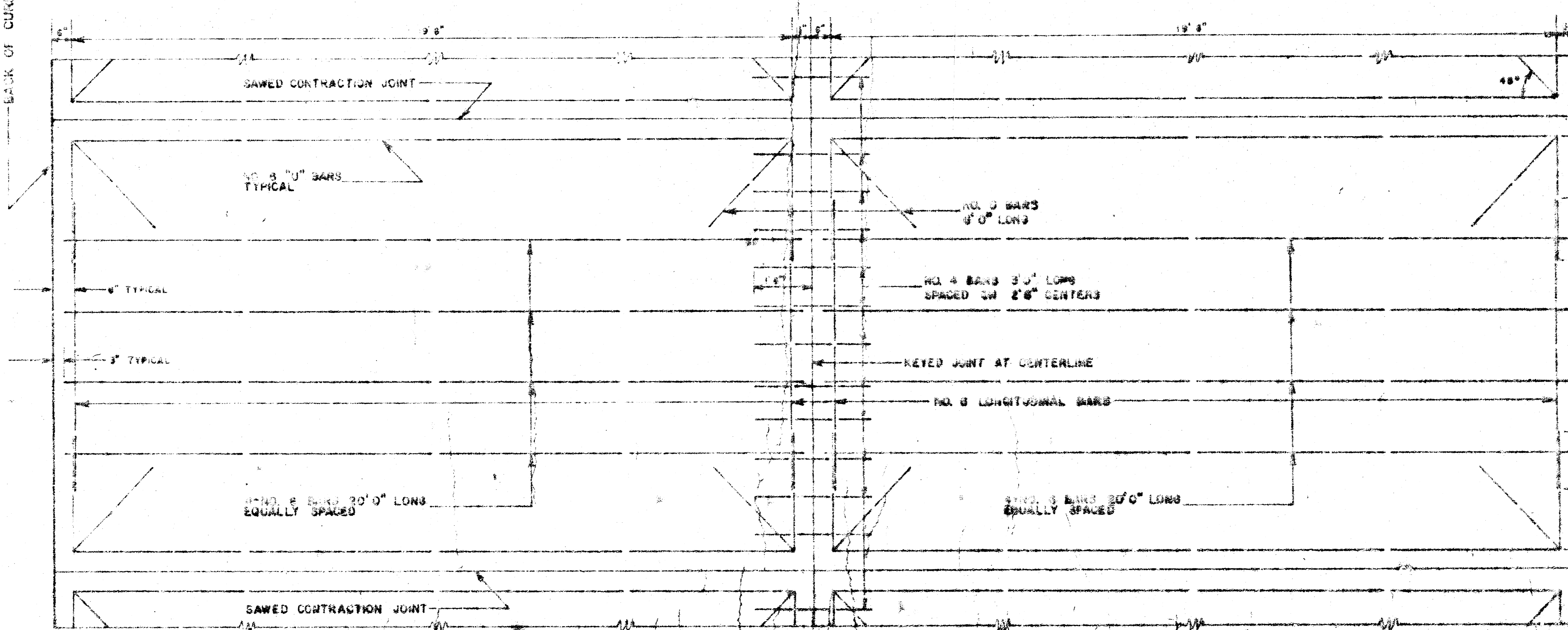
SYMMETRICAL ABOUT CENTERLINE



TYPICAL SECTION WITH ALTERNATE CROWN  
40' 0" CONCRETE PAVEMENT

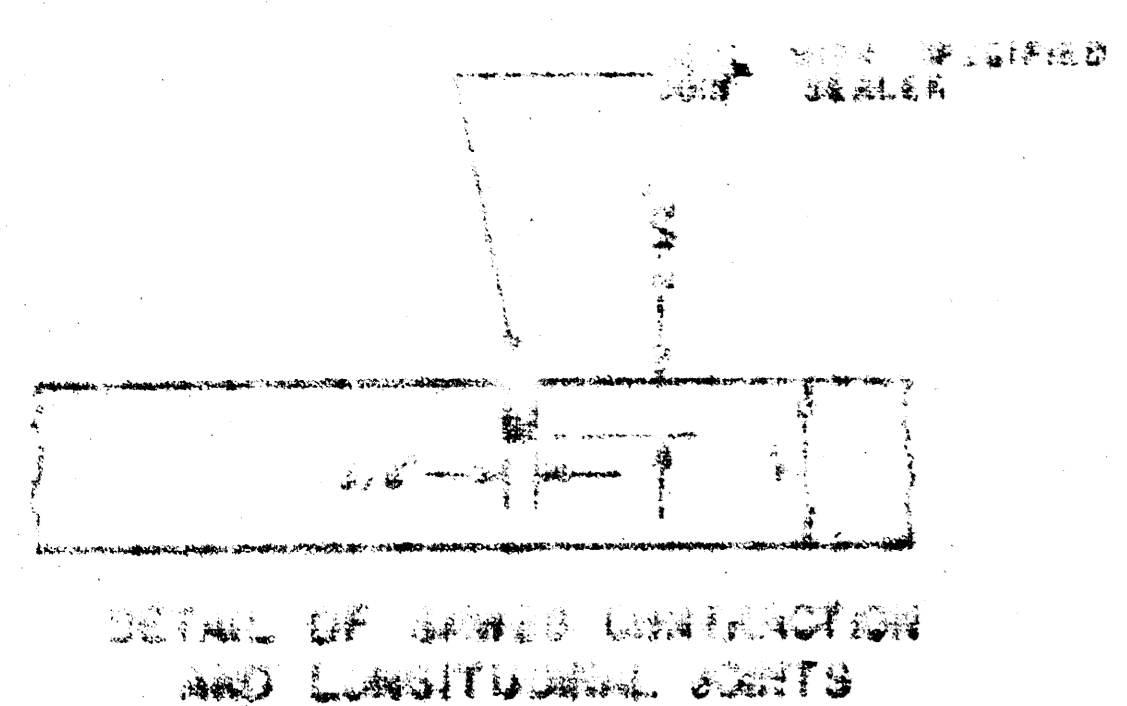


TYPICAL SECTION WITH STANDARD CROWN  
40' 0" CONCRETE PAVEMENT



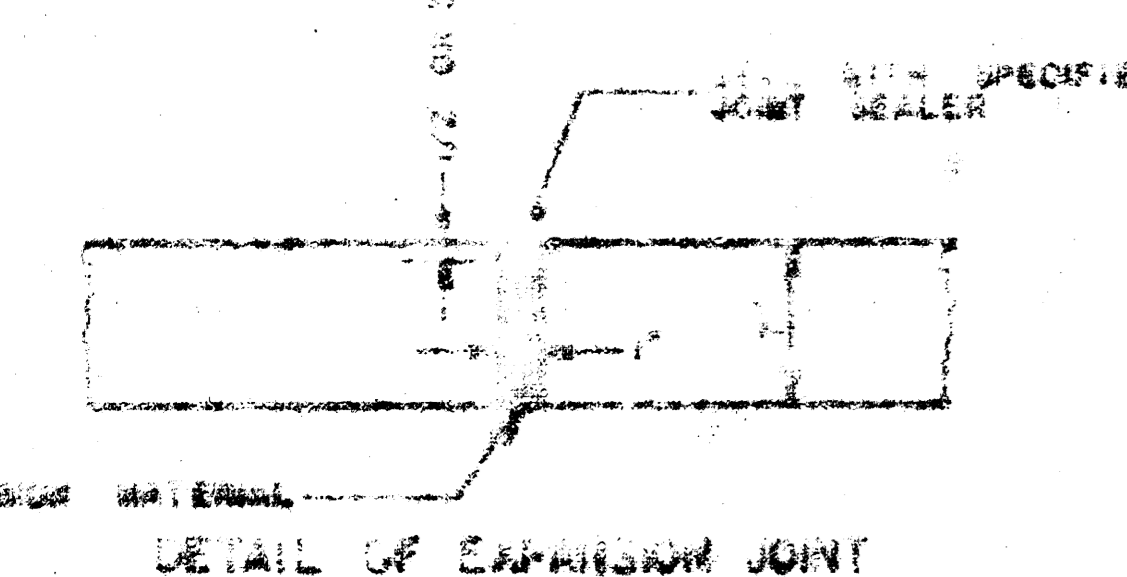
TYPICAL STEEL PATTERN

SAWED CONTRACTION JOINTS ARE TO BE CONSTRUCTED AT 20' 0" INTERVALS EXCEPT WHERE AN EXPANSION JOINT IS USED.

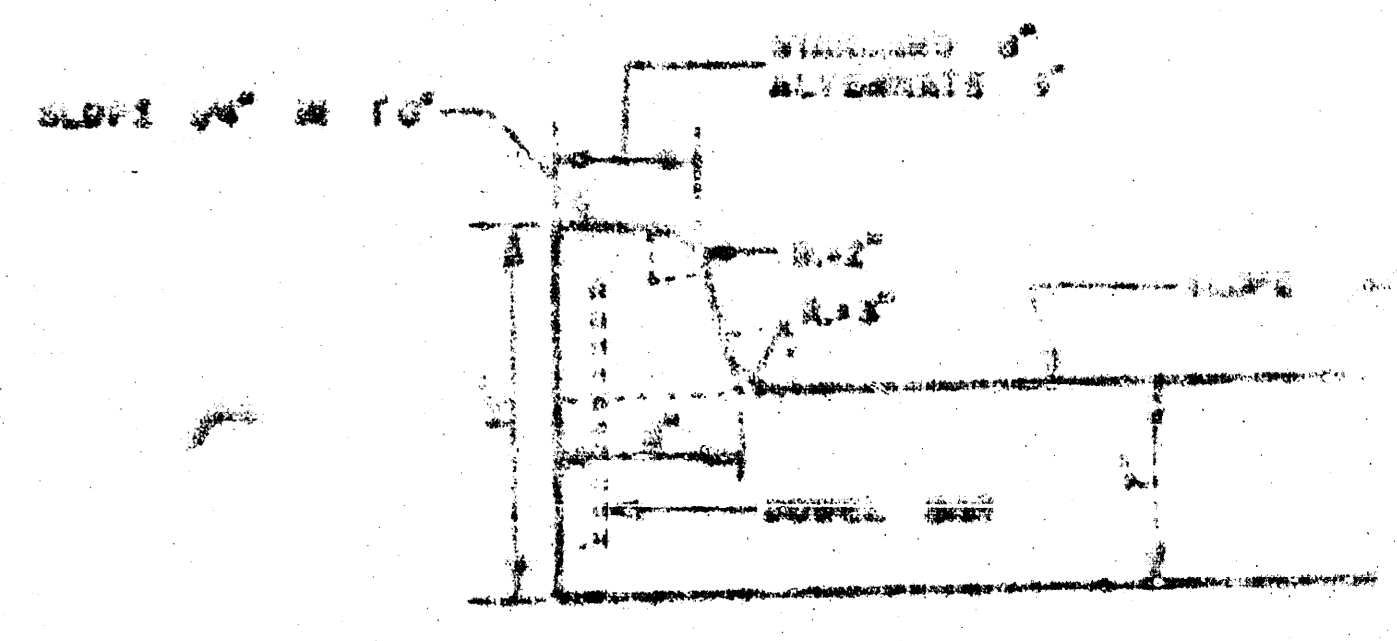


DETAIL OF SAWED CONTRACTION AND LONGITUDINAL JOINTS

EXPANSION JOINTS ARE TO BE CONSTRUCTED AT MAXIMUM INTERVALS OF 120' 0".



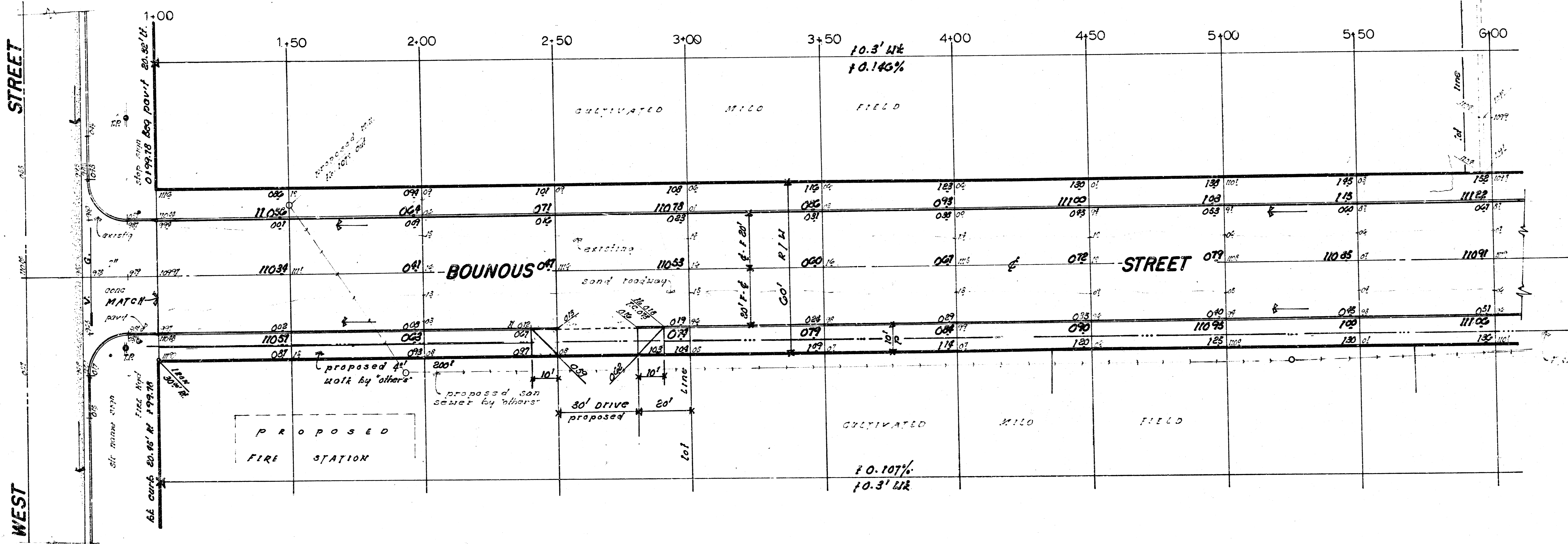
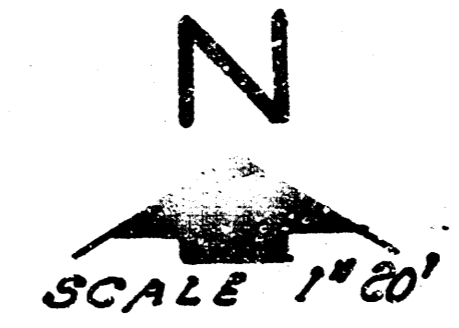
DETAIL OF EXPANSION JOINT



DETAIL OF INTEGRAL CURB

INTEGRAL CURB SHALL BE CAST THROUGH PAVEMENT AT CURB AND DISTANCE OF 10' FROM TEN FOOT INTERVALS BETWEEN EXPANSION JOINTS HAVING THE SAME NUMBER. THE EXPANSION JOINTS IN THE PAVEMENT SHALL BE CONSTRUCTED IN THE INTEGRAL CURB AT SPECIFIED LOCATIONS NUMBER 4 ON DRAWING. SHALL BE INSTALLED IN THE INTEGRAL CURB WITH AN APPROXIMATE 1/2" GUTTER. PAVEMENT GRADES SHOWN ON PLANS ARE STANDARD CROWN.

B.M. 111.49 R.R. Spike in N.E. side of P. pole @ S.W. corner of MCCOMAS & HARRY STREET.  
 B.M. 112.28 " chisel mark in N.E. corner of conc sidewalk of south entrance to plastic job Co. 1030 MCCOMAS AVE.  
 B.M. 112.15 R.R. Spike in N. side of P. pole approx 40' South & 35' West of & both WEST & BOUNOUS.



**SUB-GRADE**  
 TYPE OF SUB-GRADE TREATMENT SHALL BE DETERMINED BY THE FIELD ENGINEER. SUB-GRADE TREATMENT MAY CONSIST OF LIME TREATMENT, CEMENT TREATMENT, SUB-GRADE MODIFICATION, OR ANY COMBINATION OF THESE.

"CITY"		"PROPERTY"	
Excavation	Comp fill	Excavation	Comp fill
9.3 cu yds	6.6 cu yds	791.4 cu yds	198.2 cu yds
+10% .9 "	+10% .7 "	+10% 79.7 "	+10% 19.8 "
10.2 cu yds	7.3 cu yds	870.5 cu yds	218.0 cu yds

"PROPERTY"	
Excavation	Comp fill
791.4 cu yds	198.2 cu yds
+10% 79.7 "	+10% 19.8 "
870.5 cu yds	218.0 cu yds
3305 sq yds Manipulation	



2  
4

**BOUNOUS STREET**  
 E.L. WEST STR To E.L.M. AVE.  
**CITY of WICHITA, KANSAS**  
 (40' F.F. Pav't - 7' Conc.)  
 R.W. LINN CITY ENGINEER  
 Date \_\_\_\_\_ Proj No. DAK557

