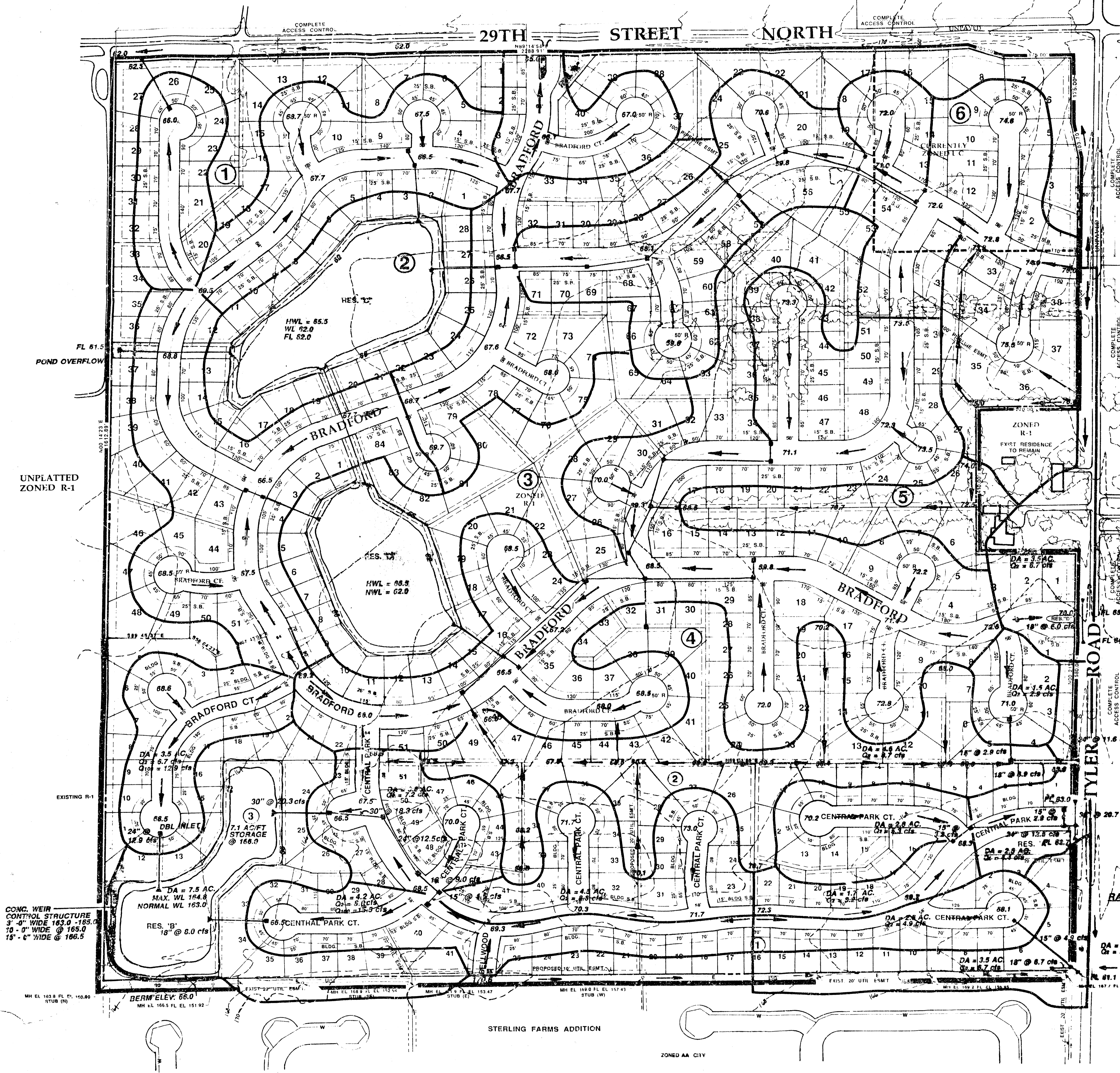


UNPLATTED ZONED R-1

UNPLATTED ZONED LIGHT COMMERCIAL



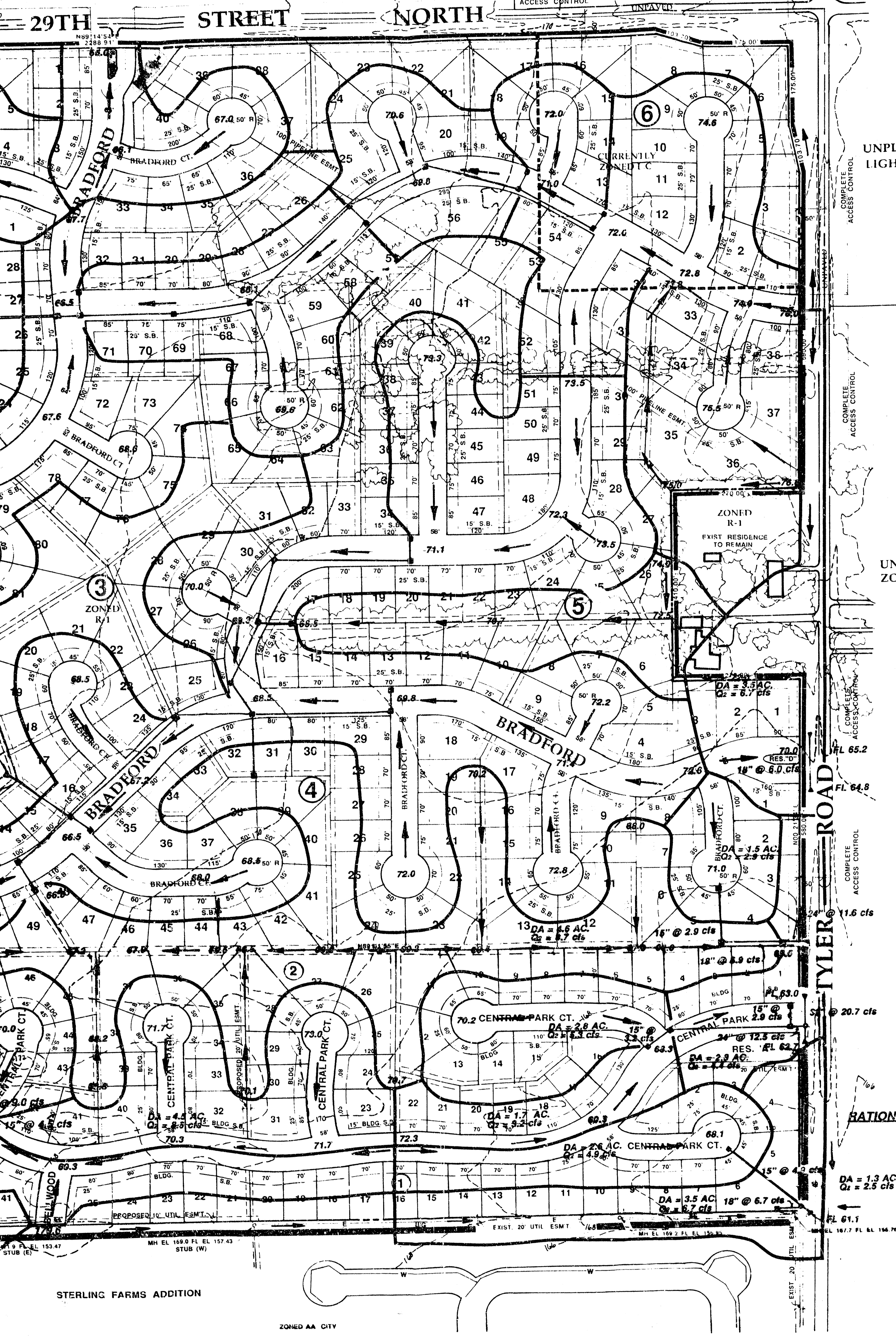
PRELIMINARY PLAT/BRADFORD DRAINAGE CONCEPT/BRADFORD SOUTH DRAINAGE PLAN

BRADFORD

OWNER: JAY RUSSELL, P.O. BOX 9007 WICHITA, KS 67212 PH. (316) 722-2417 DATE: Apr. 25, 1984

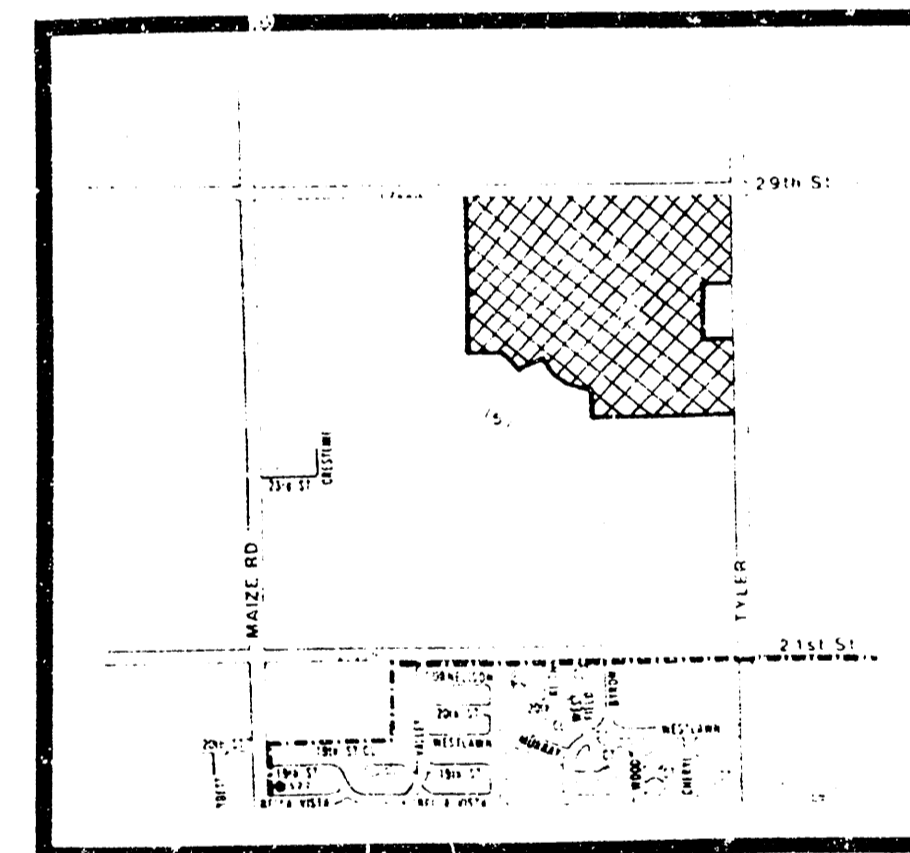
UNPLATTED
ZONED R-1

UNPLATTED ZONED
LIGHT COMMERCIAL



UNPLATTED ZONED
LIGHT COMMERCIAL

UNPLATTED
ZONED R-1



LOCATION MAP
NO SCALE

RATIONAL FORMULA COEFFICIENTS

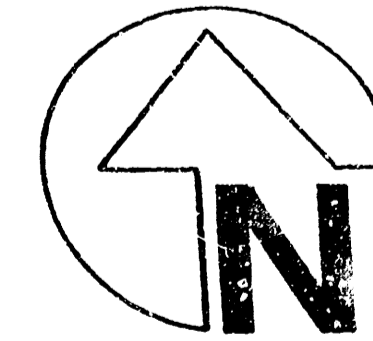
Tc = 15 MIN.
Iz = 3.8, I100 = 7.36
C = 0.5

DA = 1.3 AC
Q = 2.5 cfs

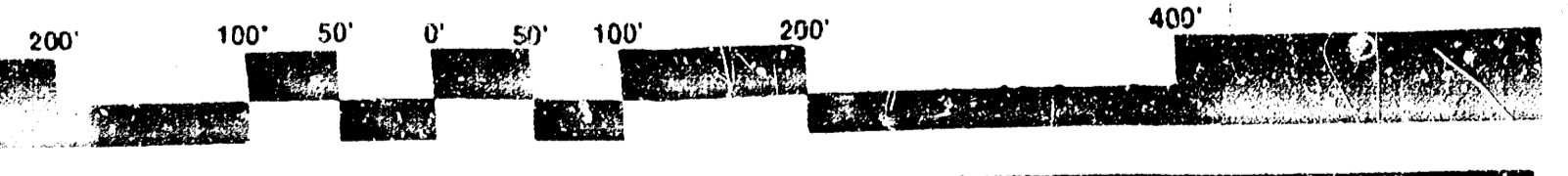
STERLING FARMS ADDITION

ZONED AA CITY

DRAINAGE CONCEPT/BRADFORD SOUTH DRAINAGE PLAN



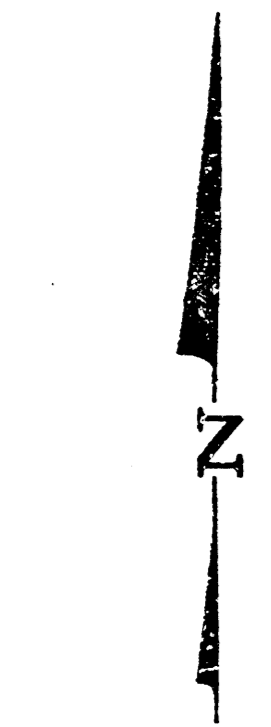
SCALE: 1"=100'



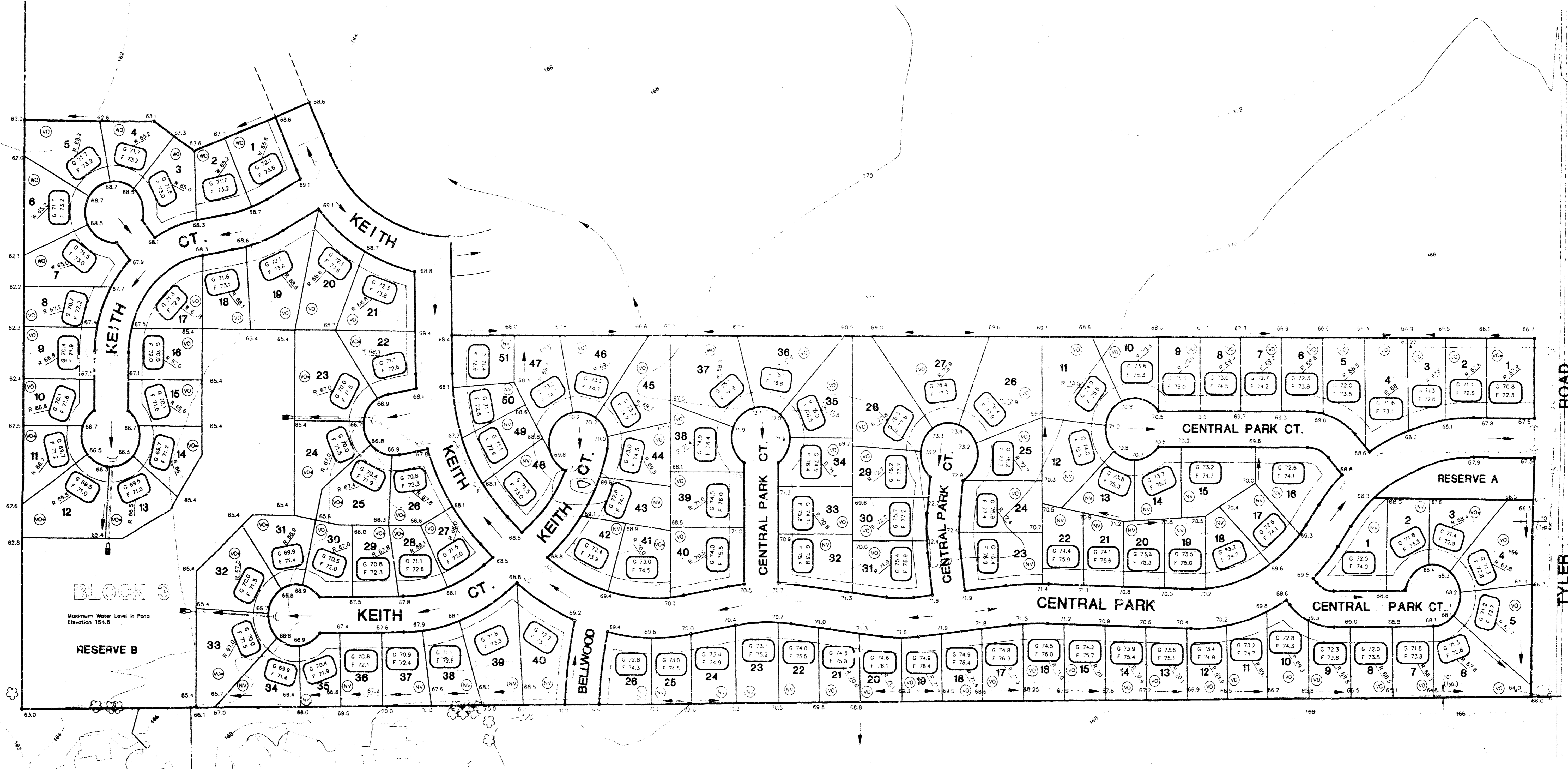
YUNG DESIGN GROUP

LEGEND

- Top of Rear Wall (Viewout Basement)
- Garage Floor
- Top of Foundation
- Top of Rear Wall (Walkout Basement)
- Viewout Basement (3' High Rear Wall)
- Viewout Basement (3.5' High Rear Wall)
- No Viewout
- Walkout Basement
- Basement



Scale: 1" = 100'



LOT GRADING PLAN BRADFORD SOUTH

AN ADDITION TO WICHITA, SEDGWICK COUNTY, KANSAS

POE & ASSOCIATES OF KANSAS, INC.

Consulting Engineers
434 N. Oliver, Suite 110 ■ Wichita, KS 67208 ■ 316/685-4114

DATE: July 19, 1994
Rev. August 31, 1995

**APPROVED
DRAINAGE PLAN**