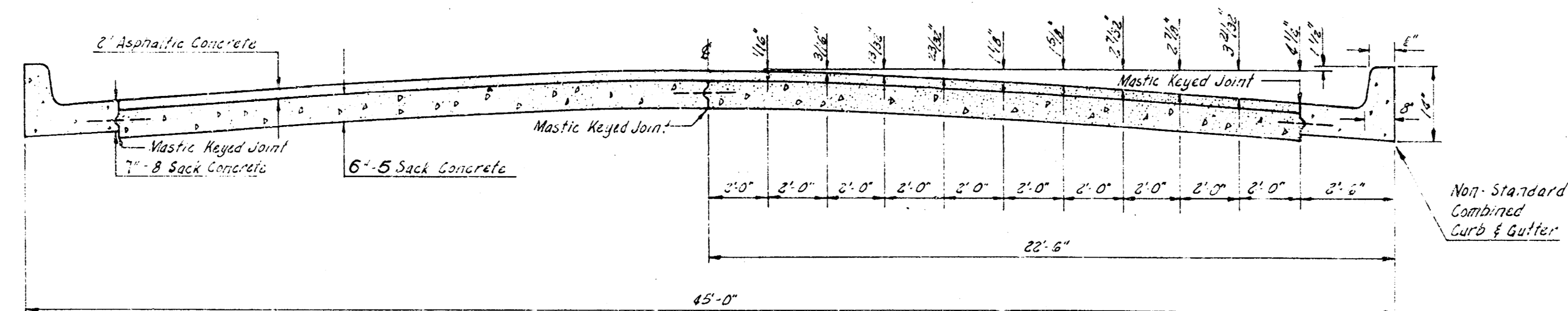


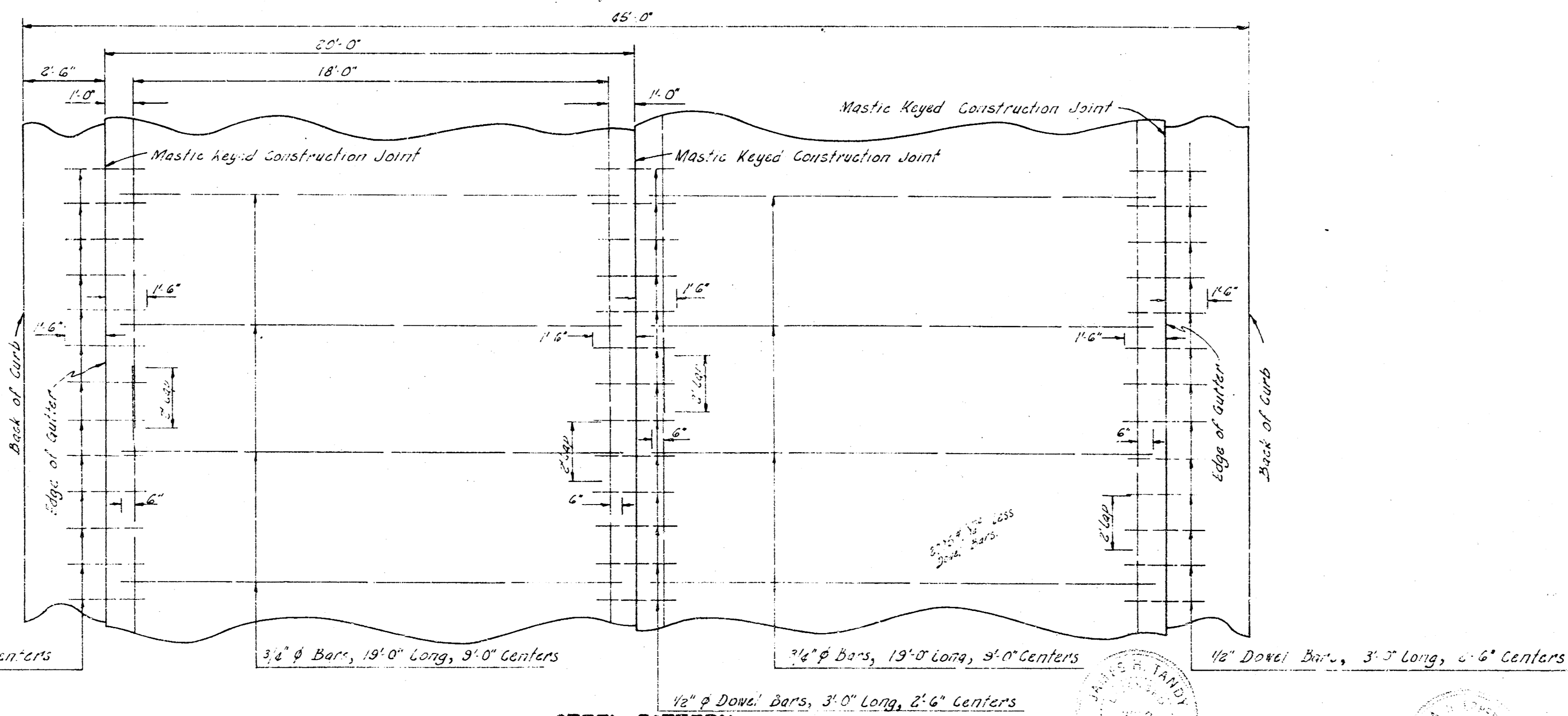
**CENTRAL AVE.**  
**WL WEST TO 300'W OF WL SHERIDAN**

C16 - 77

C16 - 78



**TYPICAL SECTION**  
NOT TO SCALE



1/2"  $\phi$  Dowel Bars, 3'0" Long, 2'6" Centers

3/4"  $\phi$  Bars, 19'0" Long, 3'0" Centers

3/4"  $\phi$  Bars, 19'0" Long, 3'0" Centers

1/2" Dowel Bars, 3'0" Long, 6' Centers

**STEEL PATTERN**  
NOT TO SCALE  
USE 3/4"  $\phi$  BARS EXCEPT WHERE NOTED

1/10

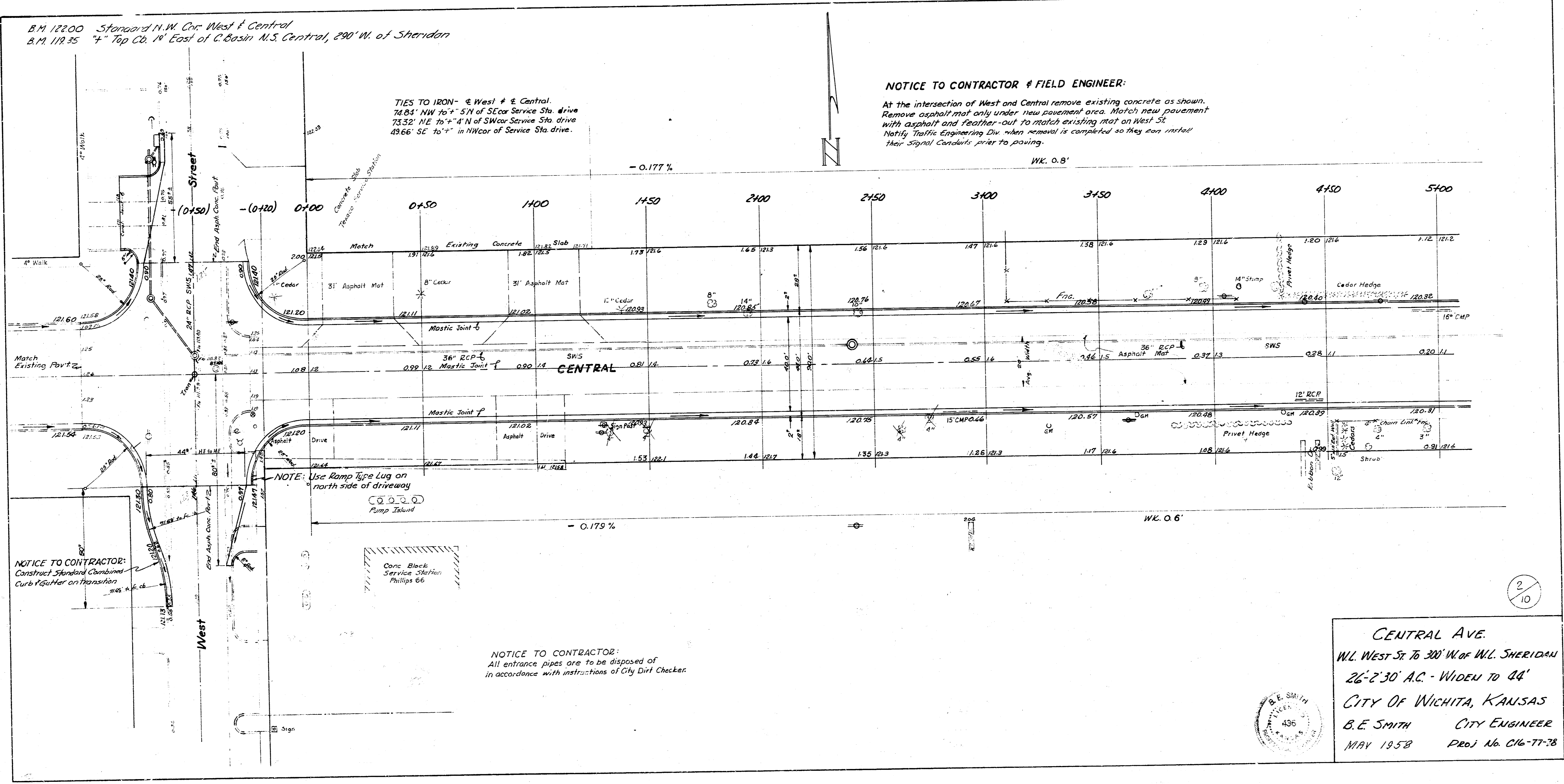
B.M. 12200 Standard N.W. Cor. West & Central  
 B.M. 11935 " + Top Co. 14' East of C. Basin N.S. Central, 290' W. of Sheridan

TIES TO IRON - E. West & Central.  
 74.84' NW to 4" 5/8" of SE Cor. Service Sta. drive  
 73.32' NE to 4" 4" N of SW Cor. Service Sta. drive  
 49.66' SE to 4" in NW Cor. of Service Sta. drive.

**NOTICE TO CONTRACTOR & FIELD ENGINEER:**

At the intersection of West and Central remove existing concrete as shown. Remove asphalt mat only under new easement area. Match new pavement with asphalt and feather-out to match existing mat on West St. Notify Traffic Engineering Div. when removal is completed so they can install their Signal Conduits prior to paving.

Young Greene Jan-10



**NOTICE TO CONTRACTOR:**  
 Construct Standard Combined Curb/Gutter on Transition

**NOTE:** Use Ramp Type Lug on north side of driveway

**NOTICE TO CONTRACTOR:**  
 All entrance pipes are to be disposed of in accordance with instructions of City Dirt Checker.

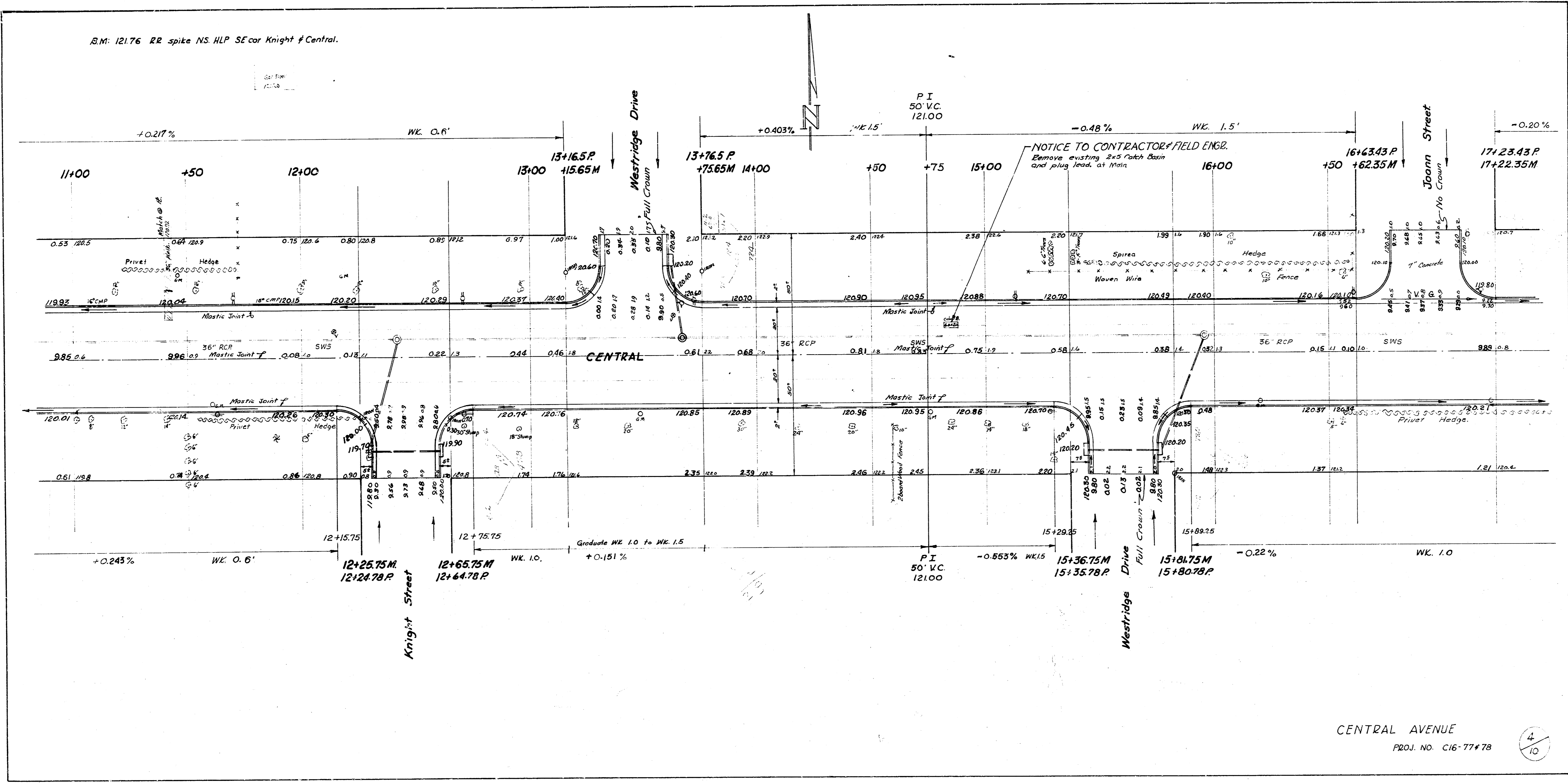


**CENTRAL AVE.**  
 W. West St. to 300' W. of W. Sheridan  
 26'-2'30" A.C. - WIDEN TO 44'  
 CITY OF WICHITA, KANSAS  
 B.E. SMITH CITY ENGINEER  
 MAY 1958 Proj. No. 016-77-78

2/10



B.M. 121.76 RR spike NS. HLP SE cor Knight # Central.

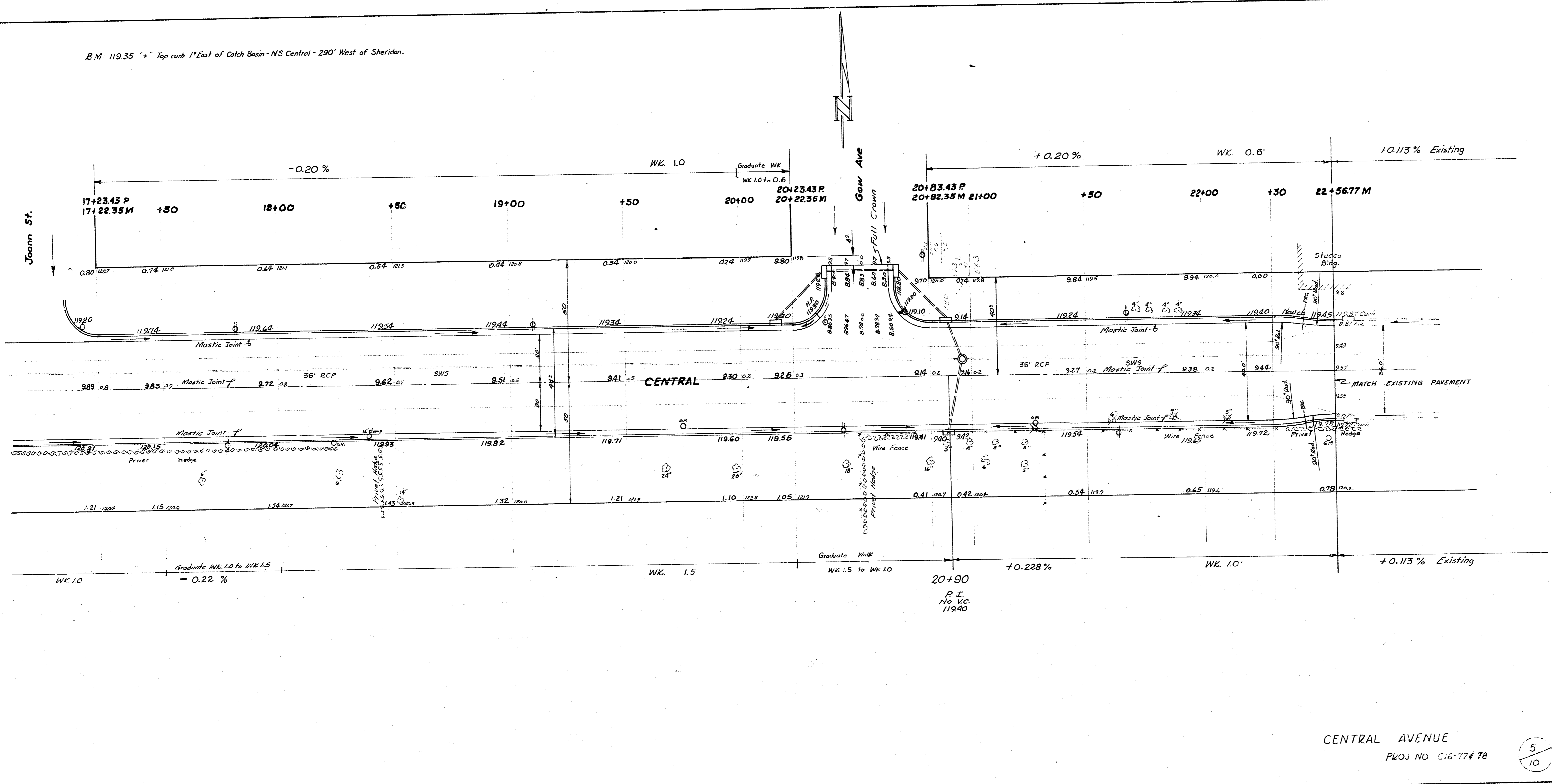


CENTRAL AVENUE

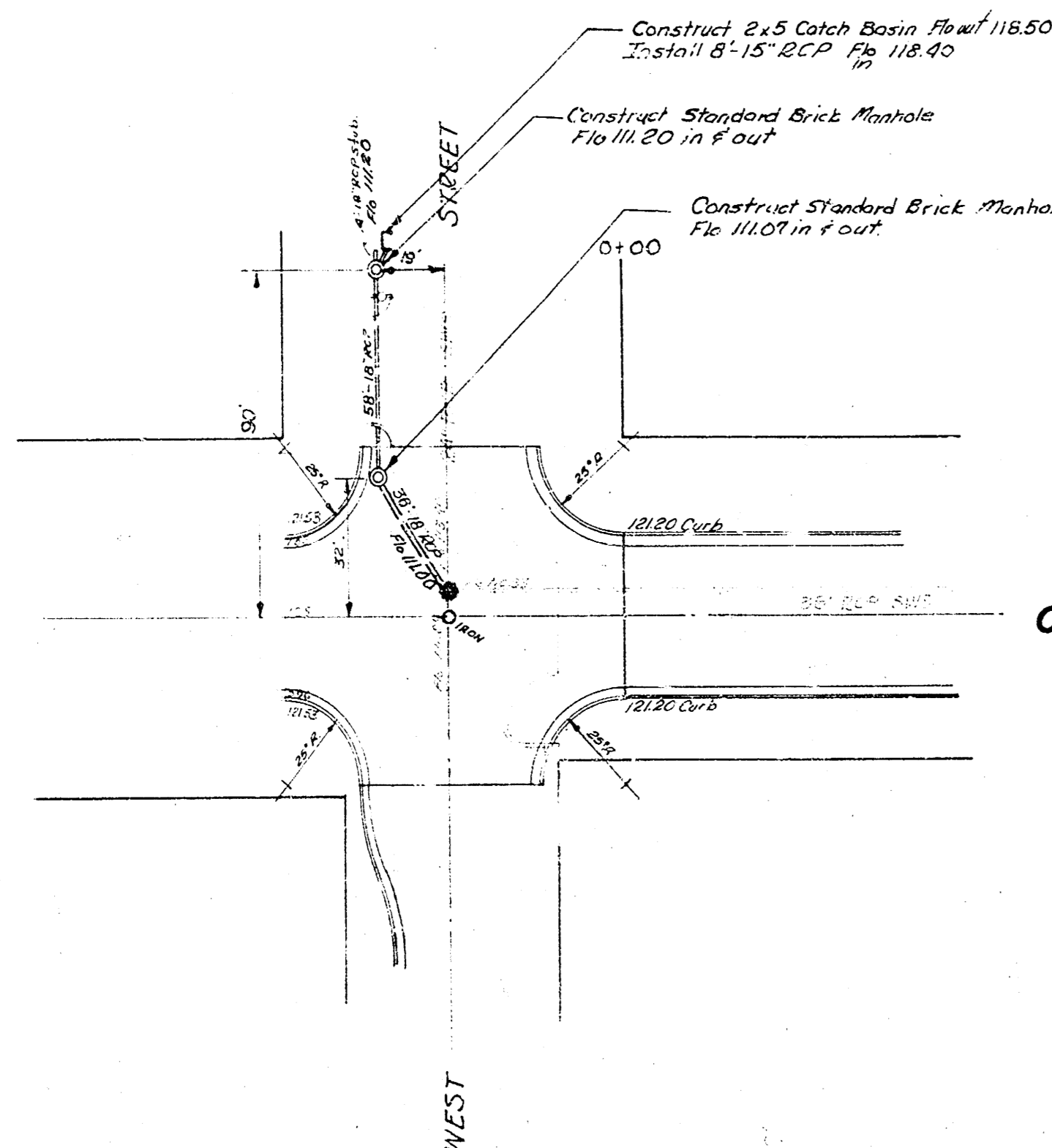
PROJ. NO. C16-77478

4/10

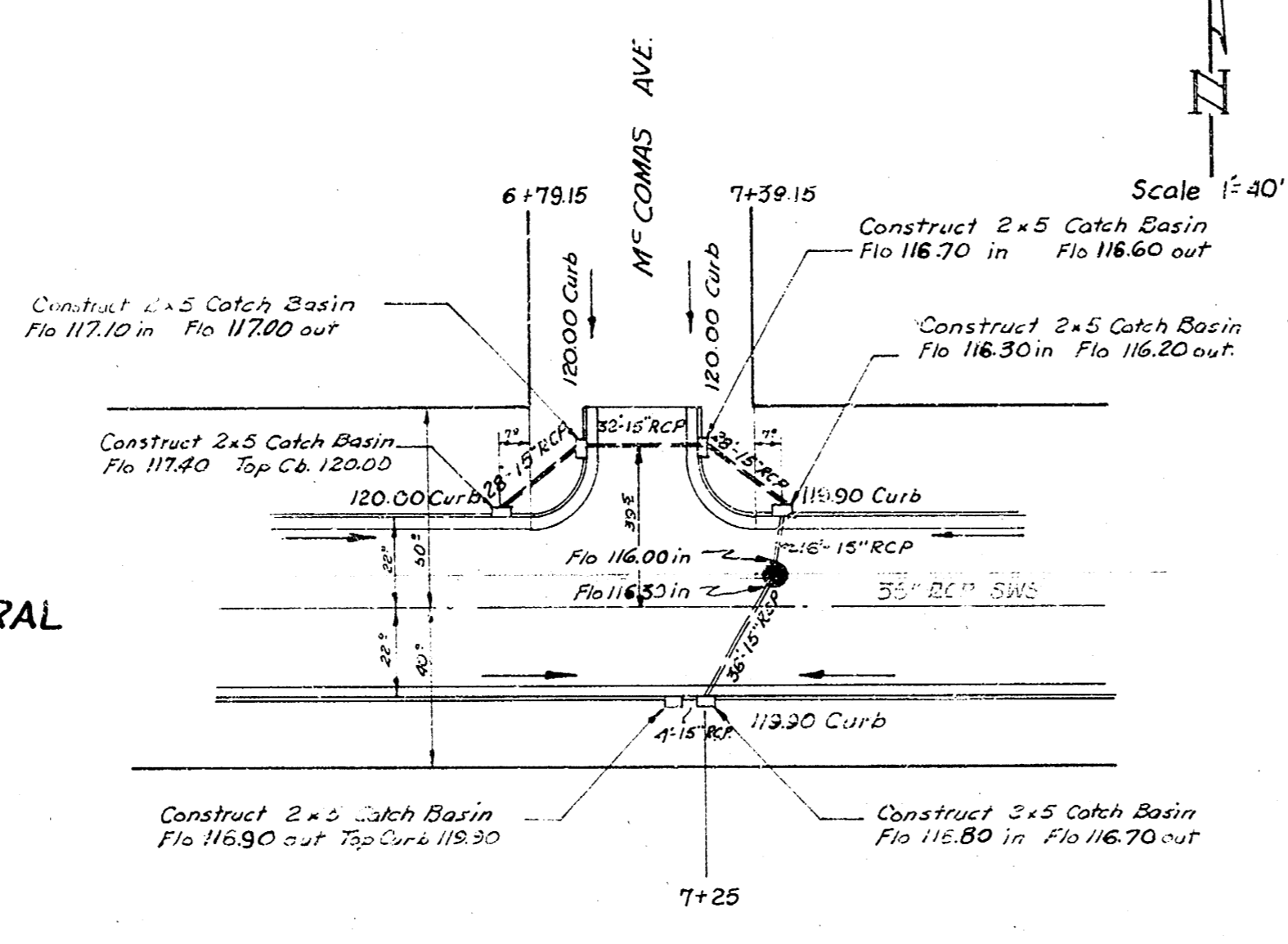
B.M. 119.35 "+ Top curb 1' East of Catch Basin - NS Central - 290' West of Sheridan.



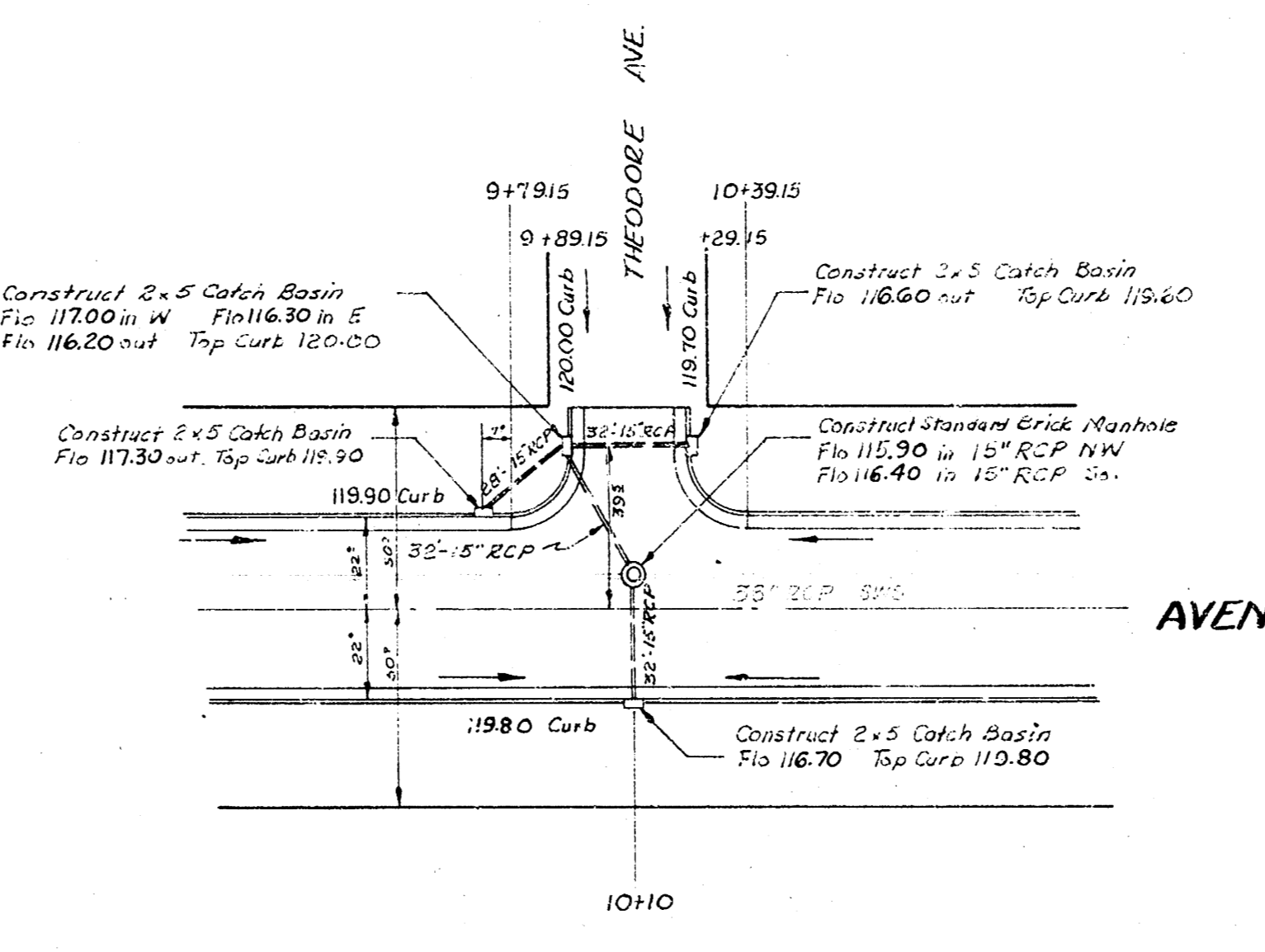
BM 122.00 Standard NW cor. West of Central.  
 BM 119.35 Top of curb 1' East of Catch Basin NS Central 290' W of Sheridan.



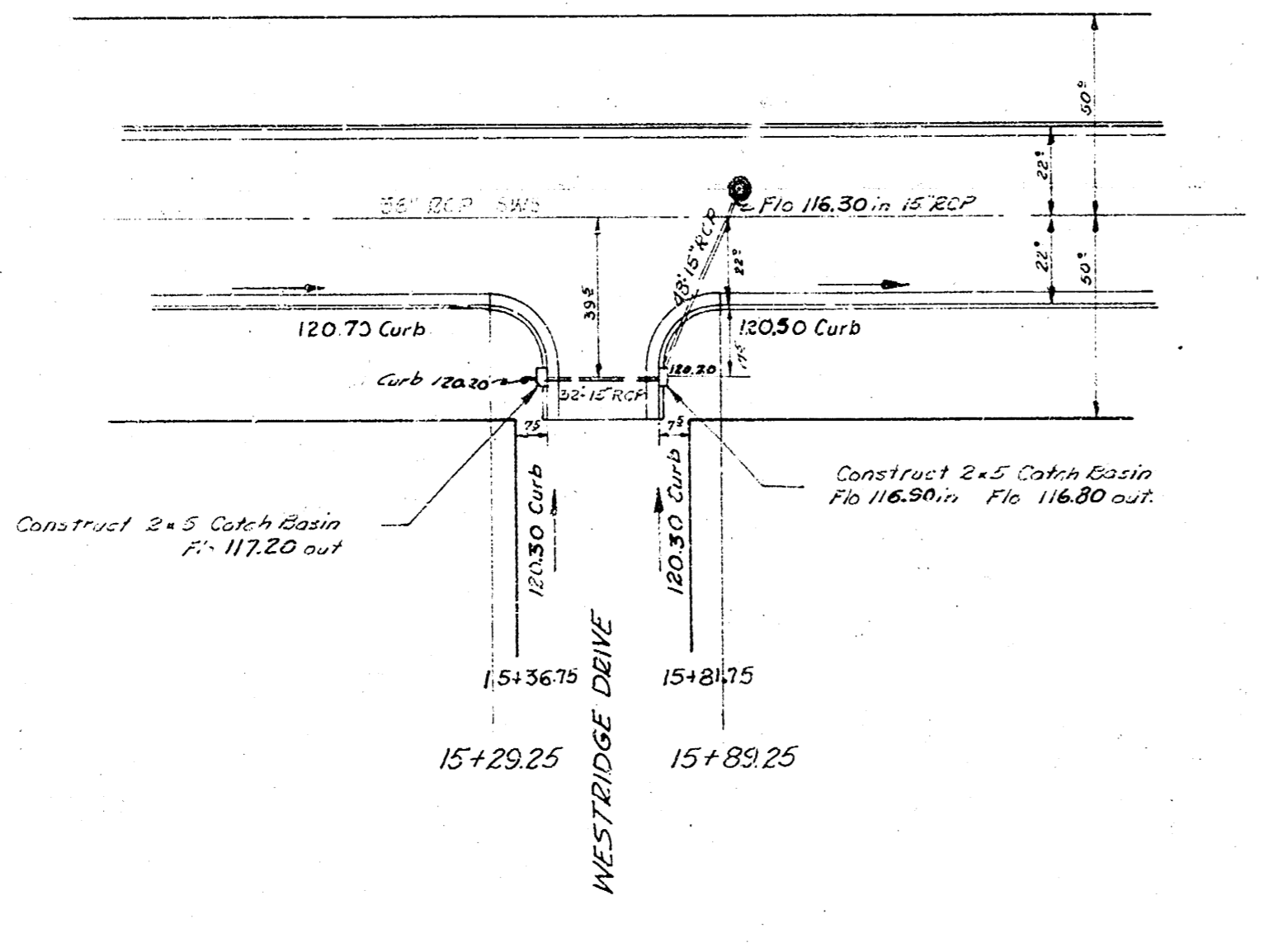
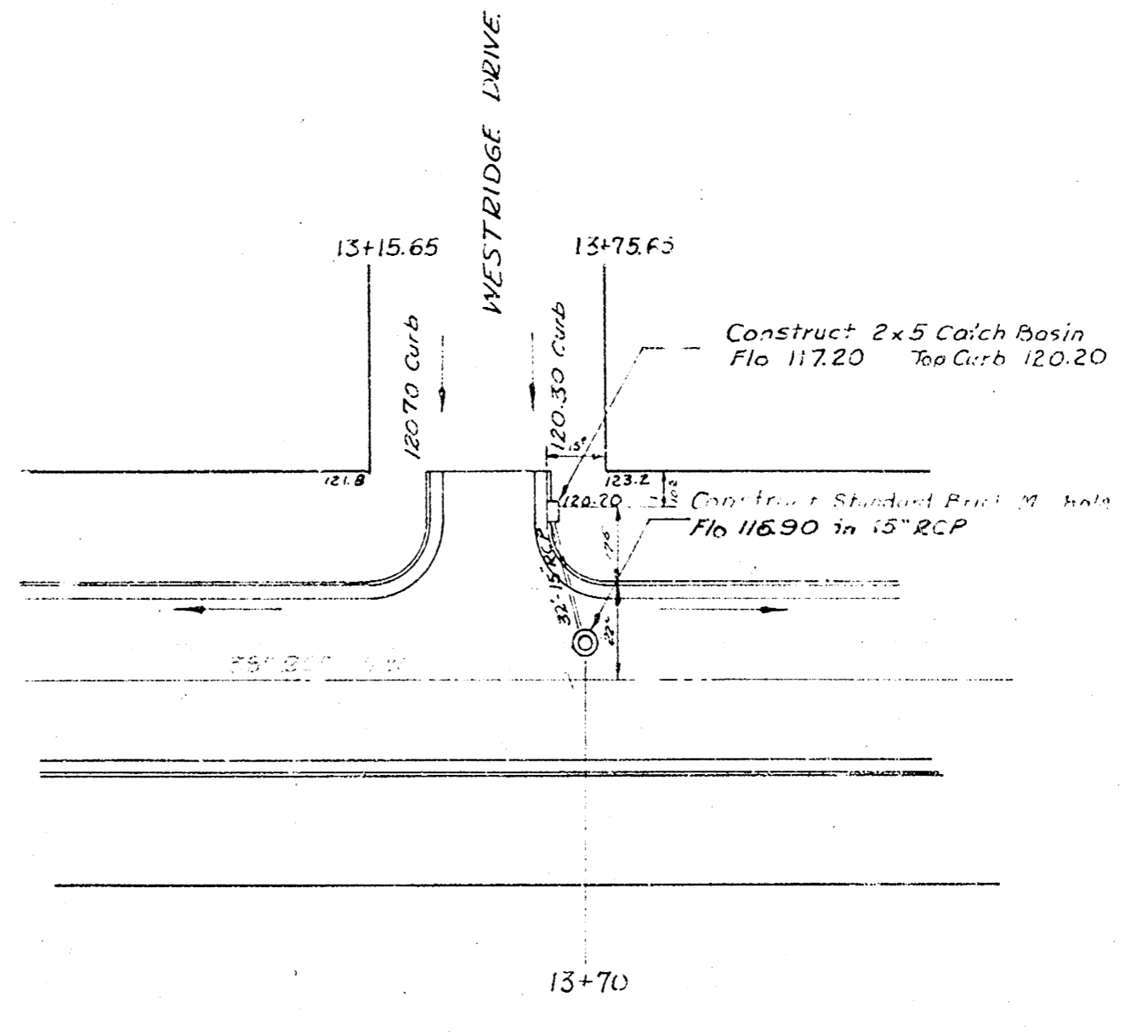
CENTRAL



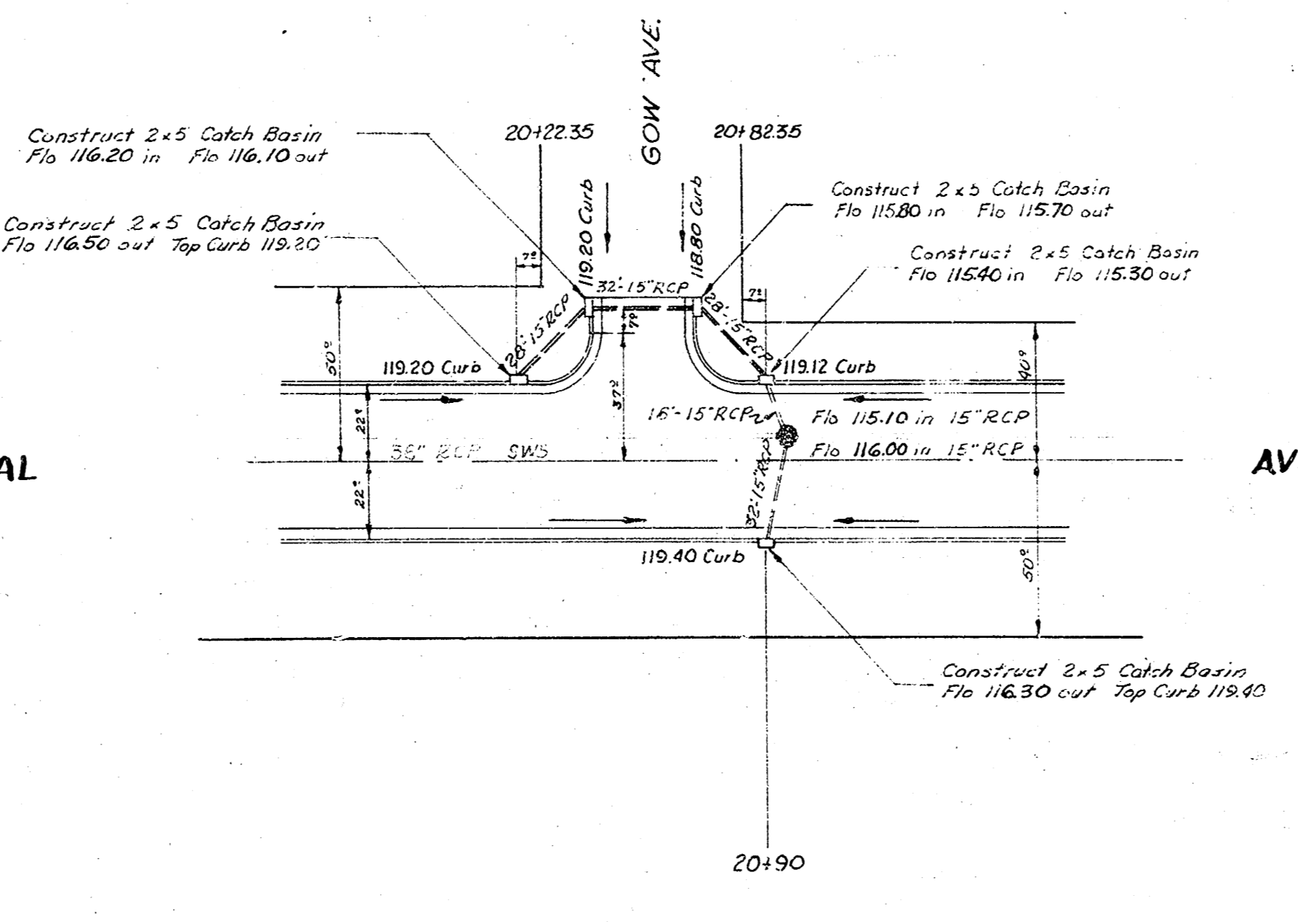
Scale 1"=40'



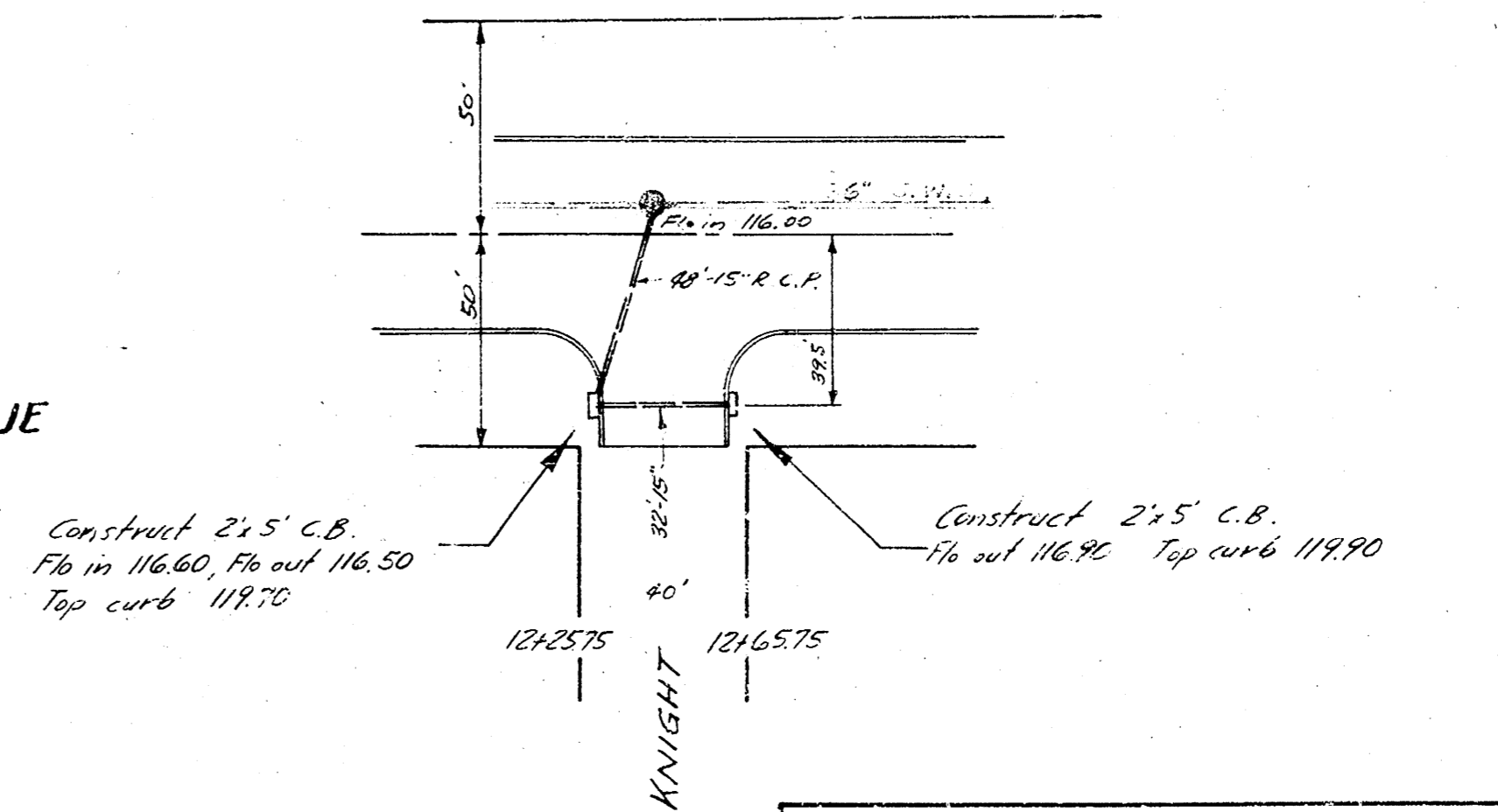
AVENUE



CENTRAL



AVENUE



INCIDENTAL DRAINAGE  
 in connection with the paving of CENTRAL  
 from W. West St. to 300' W of W. Sheridan  
 CITY OF WICHITA, KANSAS  
 B. E. SMITH CITY ENGINEER  
 MAY 1958 PEG 10006-77-73