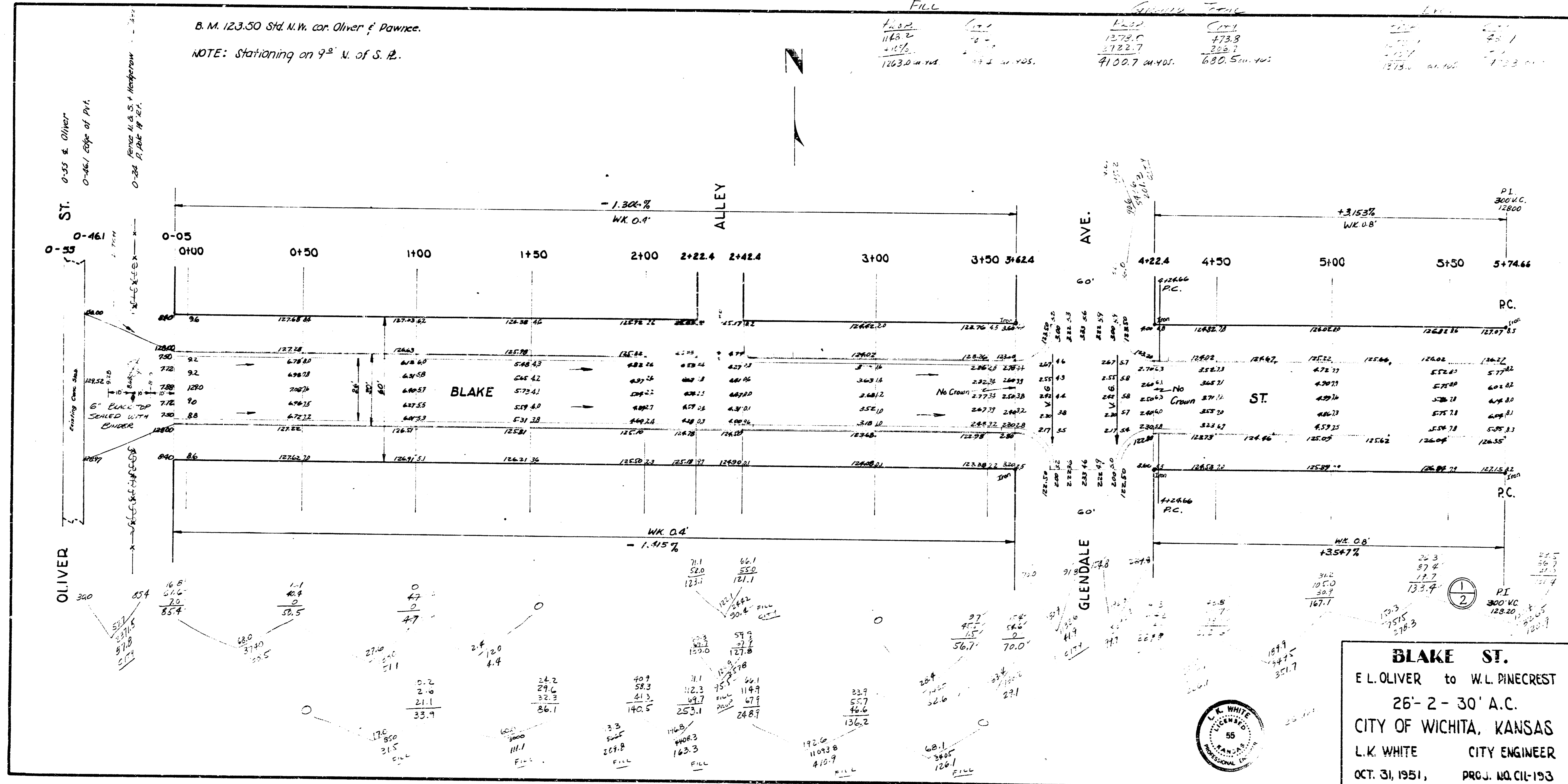


32 1-3

B. M. 123.50 Std. N.W. cor. Oliver & Pawnee.
NOTE: Stationing on 9th N. of S. B.

Station	1+00	1+50	2+00	2+50	3+00	3+50	4+00	4+50	5+00	5+50	6+00
123.50	118.2	115.7	113.2	110.7	108.2	105.7	103.2	100.7	98.2	95.7	93.2
123.50	118.2	115.7	113.2	110.7	108.2	105.7	103.2	100.7	98.2	95.7	93.2



BLAKE ST.
 E. L. OLIVER to W. L. PINECREST
 26'-2 - 30' A.C.
 CITY OF WICHITA, KANSAS
 L. K. WHITE CITY ENGINEER
 OCT. 31, 1951, PRG. NO. CIL-193



BA = 3-3

