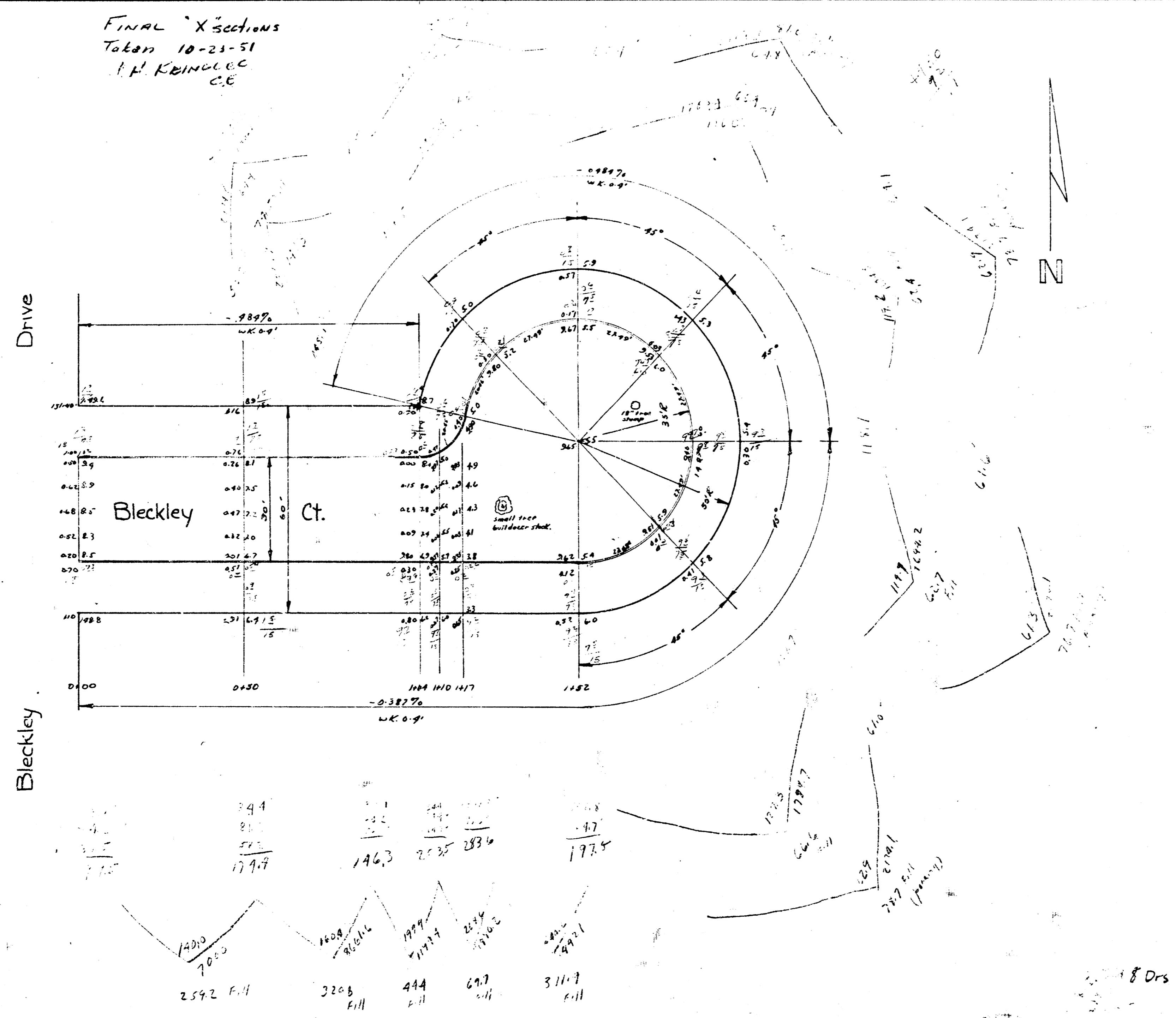
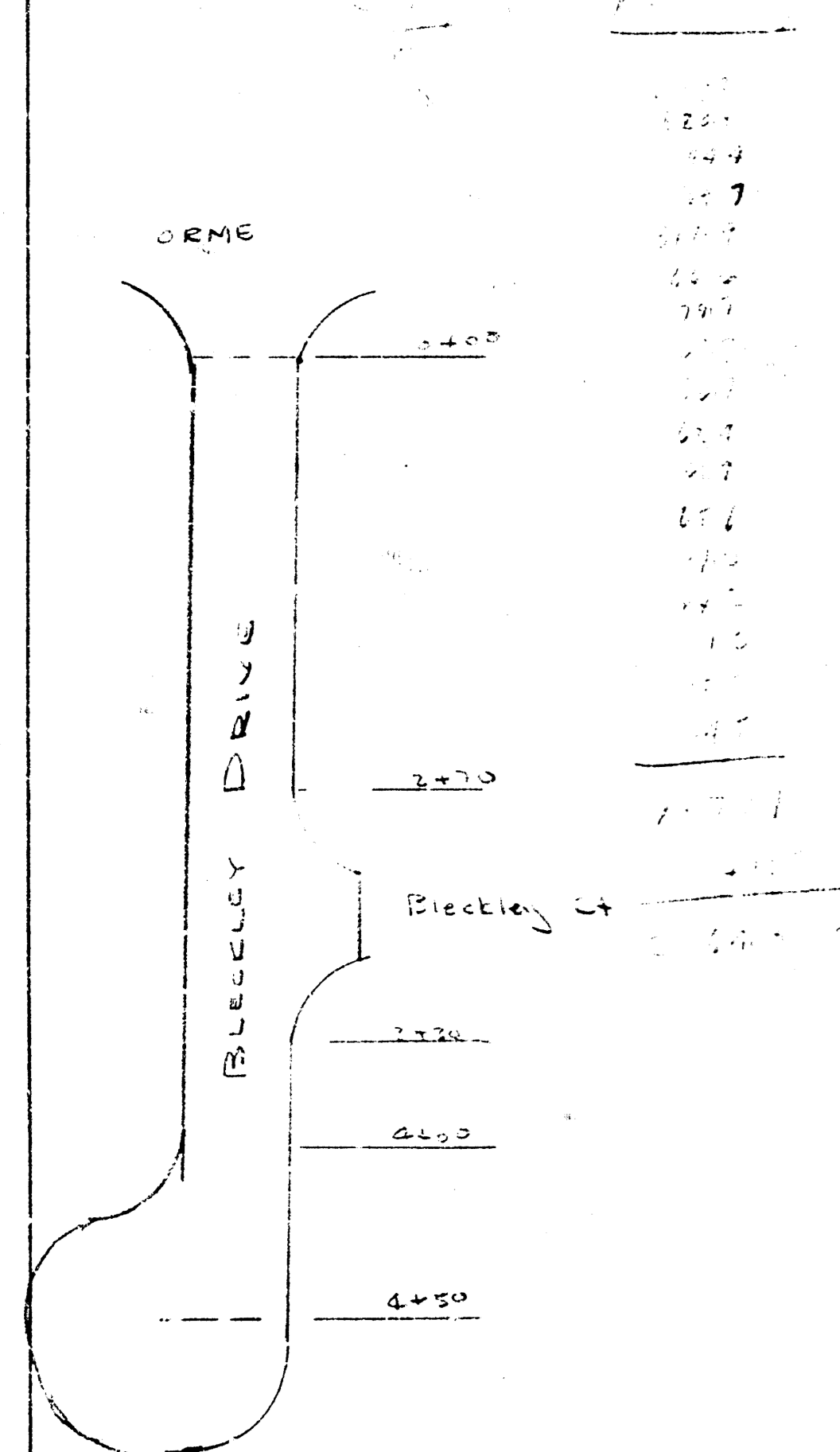


BM 120.95 ~ R in Pitche, N. of Orme, E. L. Bleckley Drive.

FINAL X-sections  
Taken 10-23-51  
L. K. BINGLER  
C.E.



Bleckley Court  
30' conc. curb  
City of Wichita, Kansas  
L.K. White ~ City Engineer  
Sept. 1950 Proj. C-10-68



