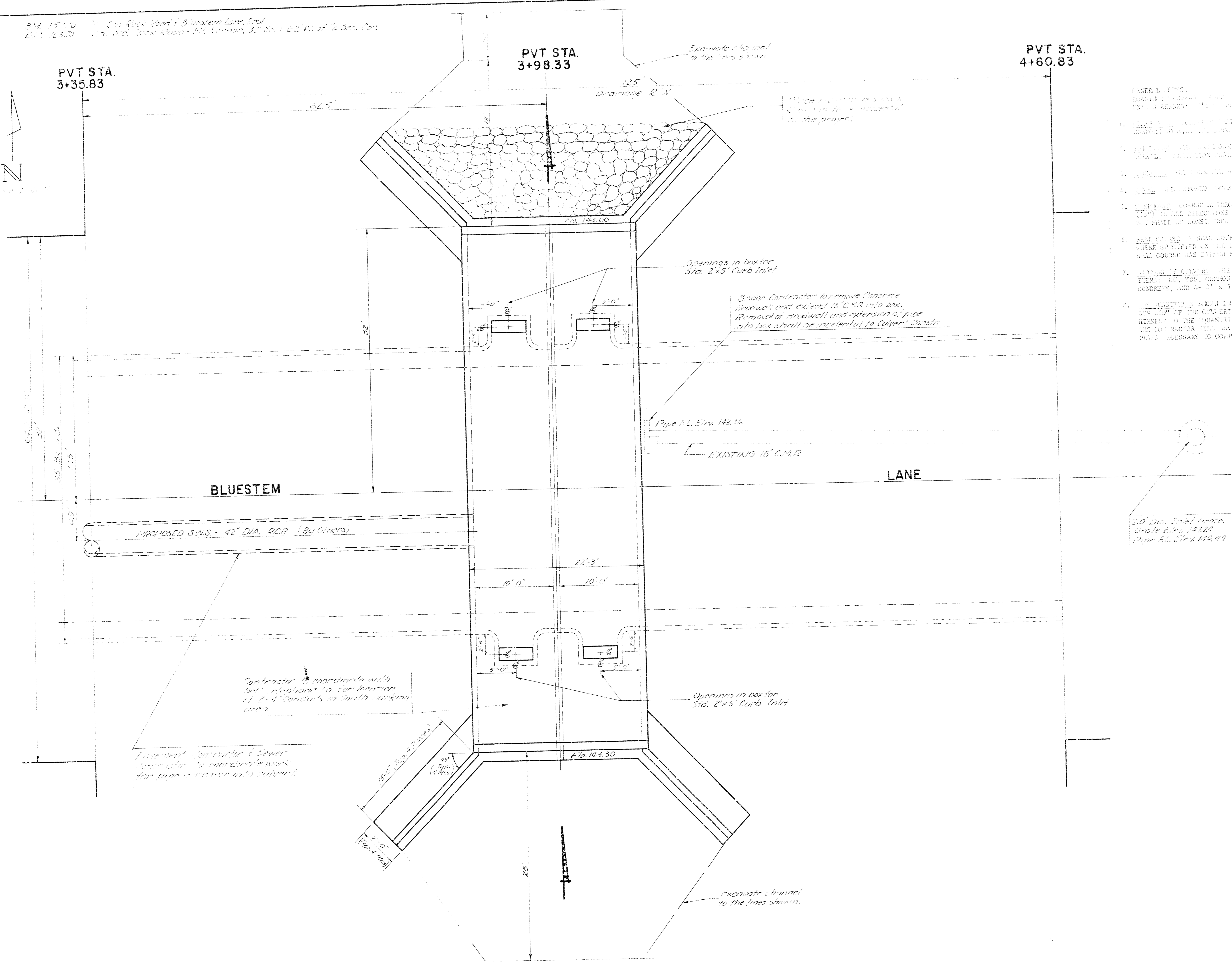
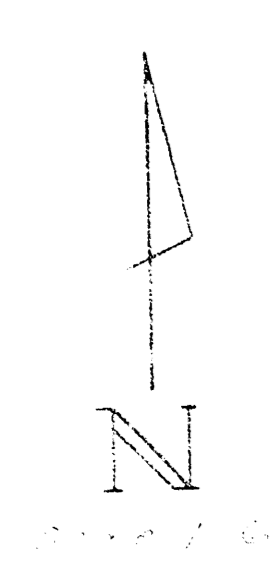


B.M. 177.0  
201.128.0  
Cedar Lakes Road & Bluestem Lane East  
City and Block - Cedar Lakes, 32' x 1' 0" W of 1/2 Sec. 20

PVT STA.  
3+35.83

PVT STA.  
3+98.33

PVT STA.  
4+60.83



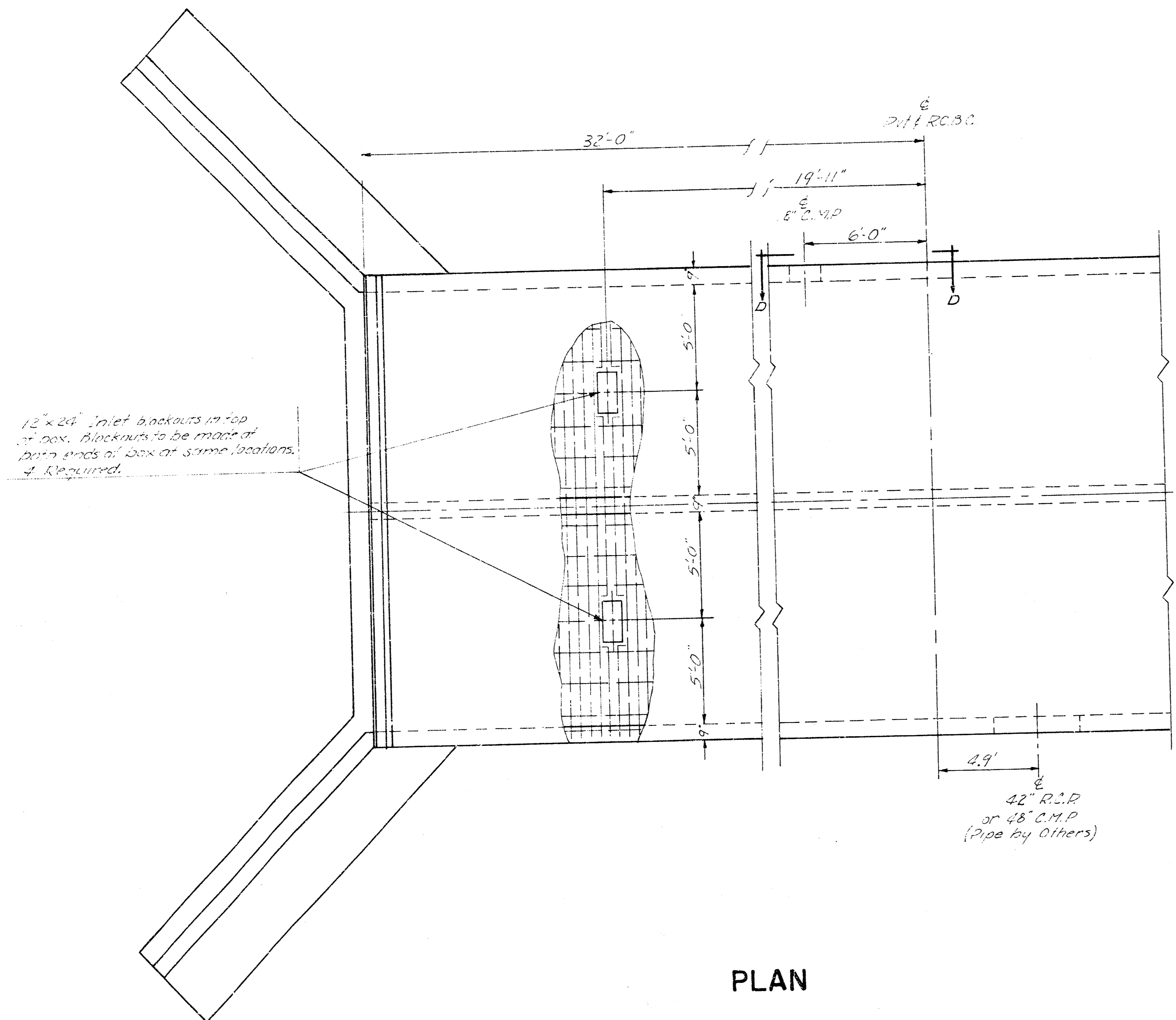
- GENERAL NOTES:
1. ALL WORK SHALL BE DONE IN ACCORDANCE WITH THE STANDARD SPECIFICATIONS FOR HIGHWAY CONSTRUCTION, 1988 EDITION, AS AMENDED, AND THE CITY OF WICHITA, KANSAS, STANDARD SPECIFICATIONS FOR HIGHWAY CONSTRUCTION, 1988 EDITION, AS AMENDED.
  2. THE CONTRACTOR SHALL BE RESPONSIBLE FOR OBTAINING ALL NECESSARY PERMITS AND APPROVALS FROM THE CITY OF WICHITA, KANSAS, AND THE KANSAS DEPARTMENT OF TRANSPORTATION.
  3. THE CONTRACTOR SHALL BE RESPONSIBLE FOR OBTAINING ALL NECESSARY PERMITS AND APPROVALS FROM THE CITY OF WICHITA, KANSAS, AND THE KANSAS DEPARTMENT OF TRANSPORTATION.
  4. THE CONTRACTOR SHALL BE RESPONSIBLE FOR OBTAINING ALL NECESSARY PERMITS AND APPROVALS FROM THE CITY OF WICHITA, KANSAS, AND THE KANSAS DEPARTMENT OF TRANSPORTATION.
  5. THE CONTRACTOR SHALL BE RESPONSIBLE FOR OBTAINING ALL NECESSARY PERMITS AND APPROVALS FROM THE CITY OF WICHITA, KANSAS, AND THE KANSAS DEPARTMENT OF TRANSPORTATION.
  6. THE CONTRACTOR SHALL BE RESPONSIBLE FOR OBTAINING ALL NECESSARY PERMITS AND APPROVALS FROM THE CITY OF WICHITA, KANSAS, AND THE KANSAS DEPARTMENT OF TRANSPORTATION.
  7. THE CONTRACTOR SHALL BE RESPONSIBLE FOR OBTAINING ALL NECESSARY PERMITS AND APPROVALS FROM THE CITY OF WICHITA, KANSAS, AND THE KANSAS DEPARTMENT OF TRANSPORTATION.
  8. THE CONTRACTOR SHALL BE RESPONSIBLE FOR OBTAINING ALL NECESSARY PERMITS AND APPROVALS FROM THE CITY OF WICHITA, KANSAS, AND THE KANSAS DEPARTMENT OF TRANSPORTATION.

20' Dia. Steel Pipe  
Grade Elev. 143.20  
Pipe E.L. Elev. 143.49

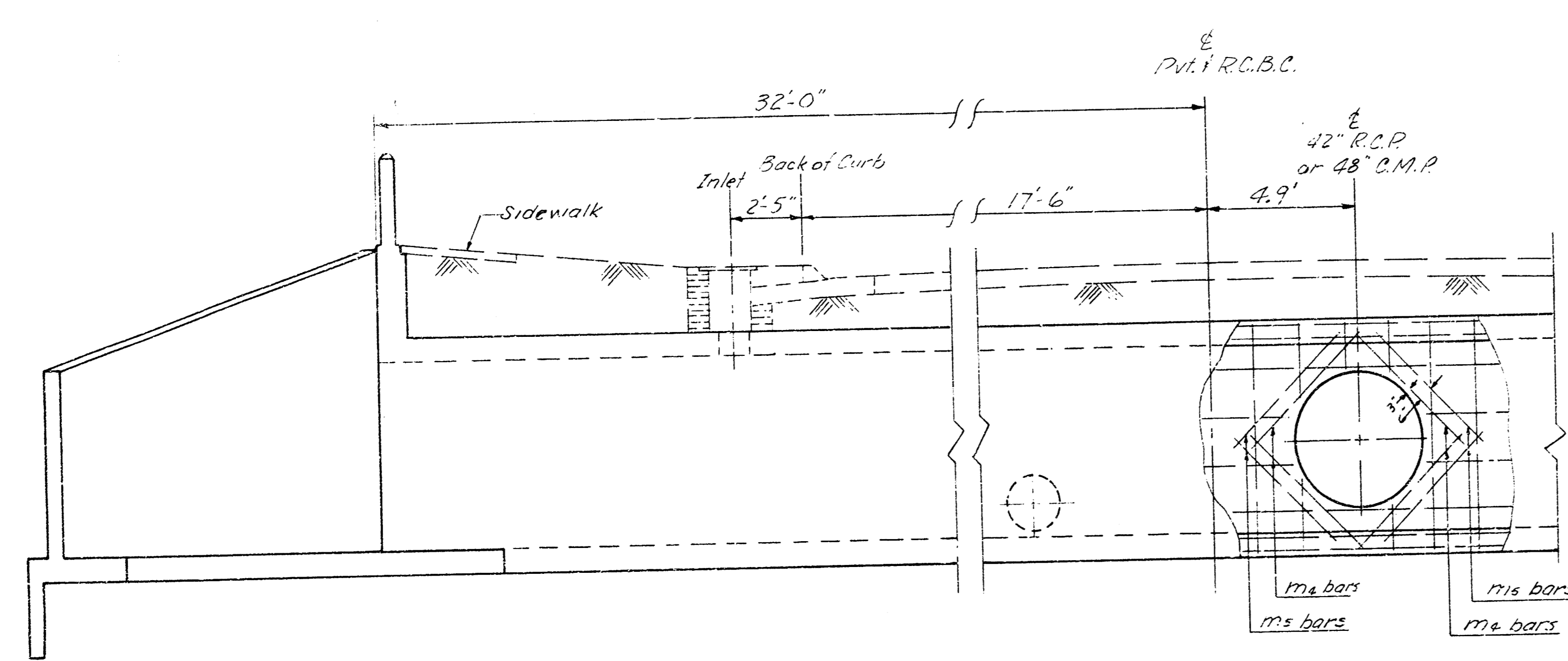
**2-10x6 REINFORCED CONCRETE  
BOX CULVERT**  
IN CONNECTION WITH PAVING OF  
BLUESTEM LANE FROM E.L. ROCK RD.  
TO E.L. CEDAR LAKES VILLAGE 2<sup>ND</sup> ADD<sup>ITION</sup>  
CITY OF WICHITA, KANSAS  
R.W. LINN CITY ENGINEER  
DATE PROJECT NO. DAKS 573

1/5

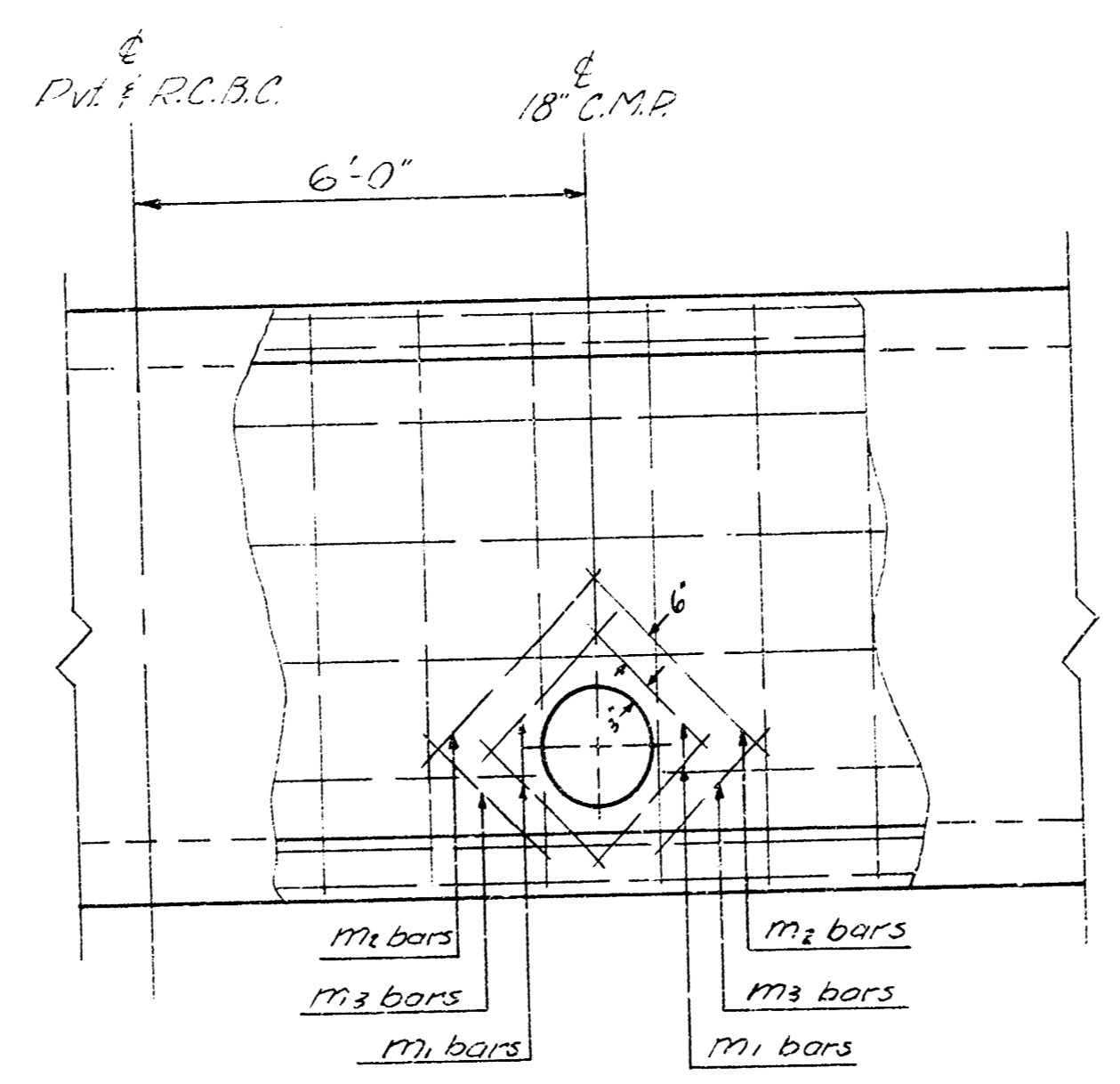
FILMED FROM THE BEST AVAILABLE COPY



PLAN



SIDE ELEVATION



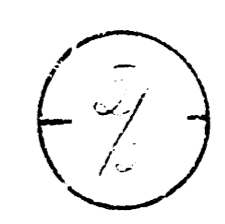
D-D

BILL OF MATERIALS		
ITEM	QUANTITY	UNIT
Class A AF Concrete	1473	CY
Reinforcing Steel	18000	LBS
Hand Excavation	100	CY
Concrete Formwork	1200	SF
Common Excavation	100	CY
Unimproved E.	100	SF
Borrow Excavation	100	CY
Class B Concrete	100	CY
2'x5' Inlets	2	EA

Lump Sum Bid

Bid Items

2-10x6 REINFORCED CONCRETE BOX CULVERT IN CONNECTION WITH PAVING OF BLUESTEM LANE



DAKS 573071

FILMED FROM THE BEST AVAILABLE COPY .....