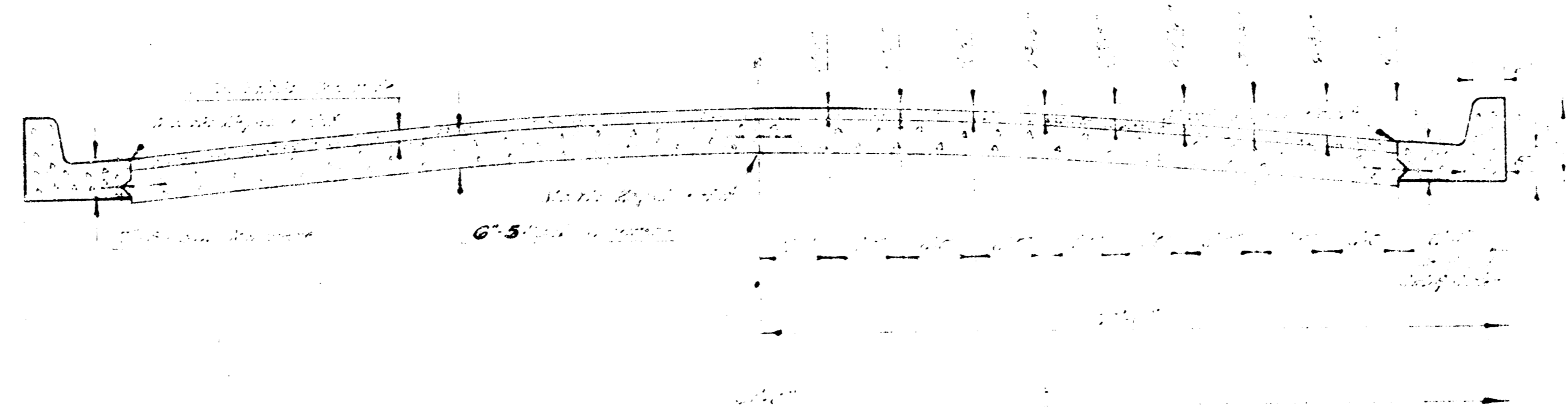
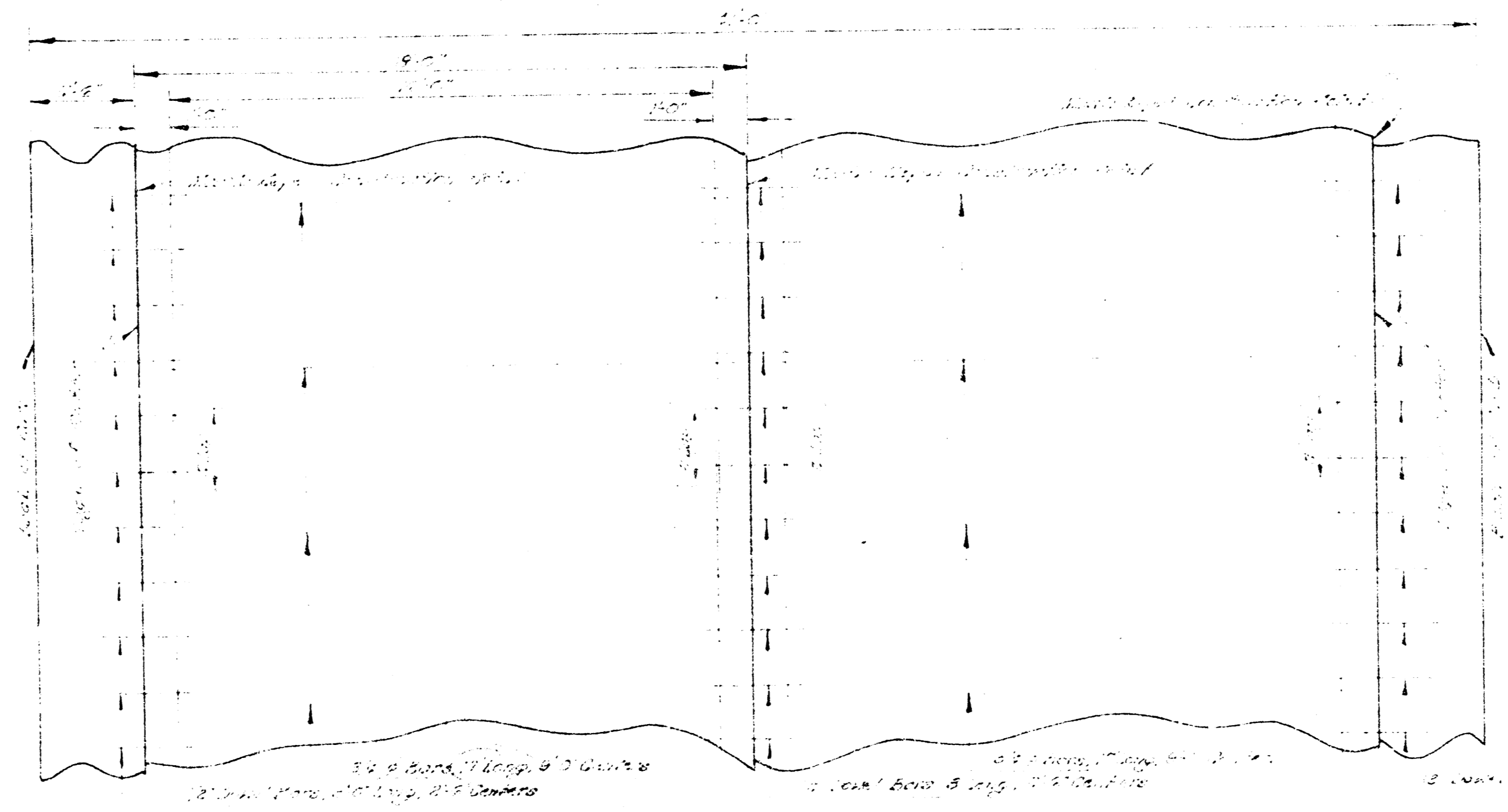


BLUFF AVENUE
FROM S.L. COLONIAL PARK 2ND. ADDITION TO S.L. 31ST. STREET SOUTH
B.E. SMITH CITY ENGINEER CITY OF WICHITA KANSAS

PROJECT NO. C 18 - 33



TYPICAL SECTION
NOT TO SCALE



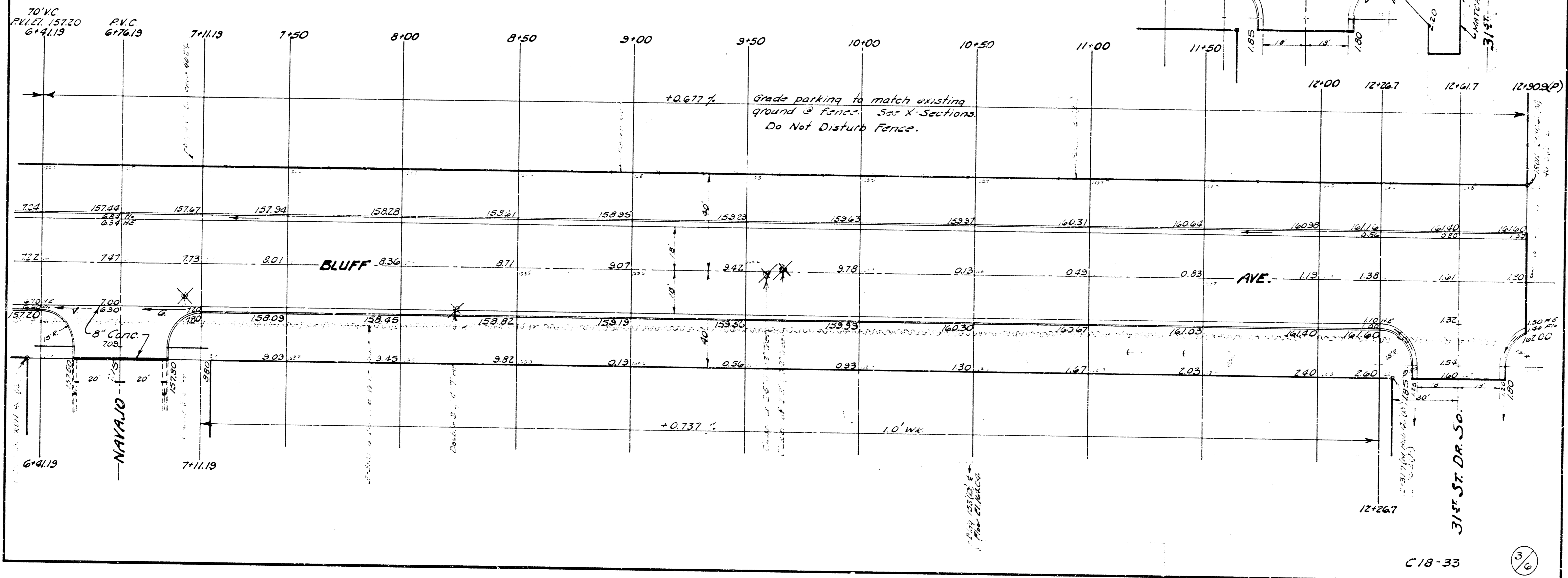
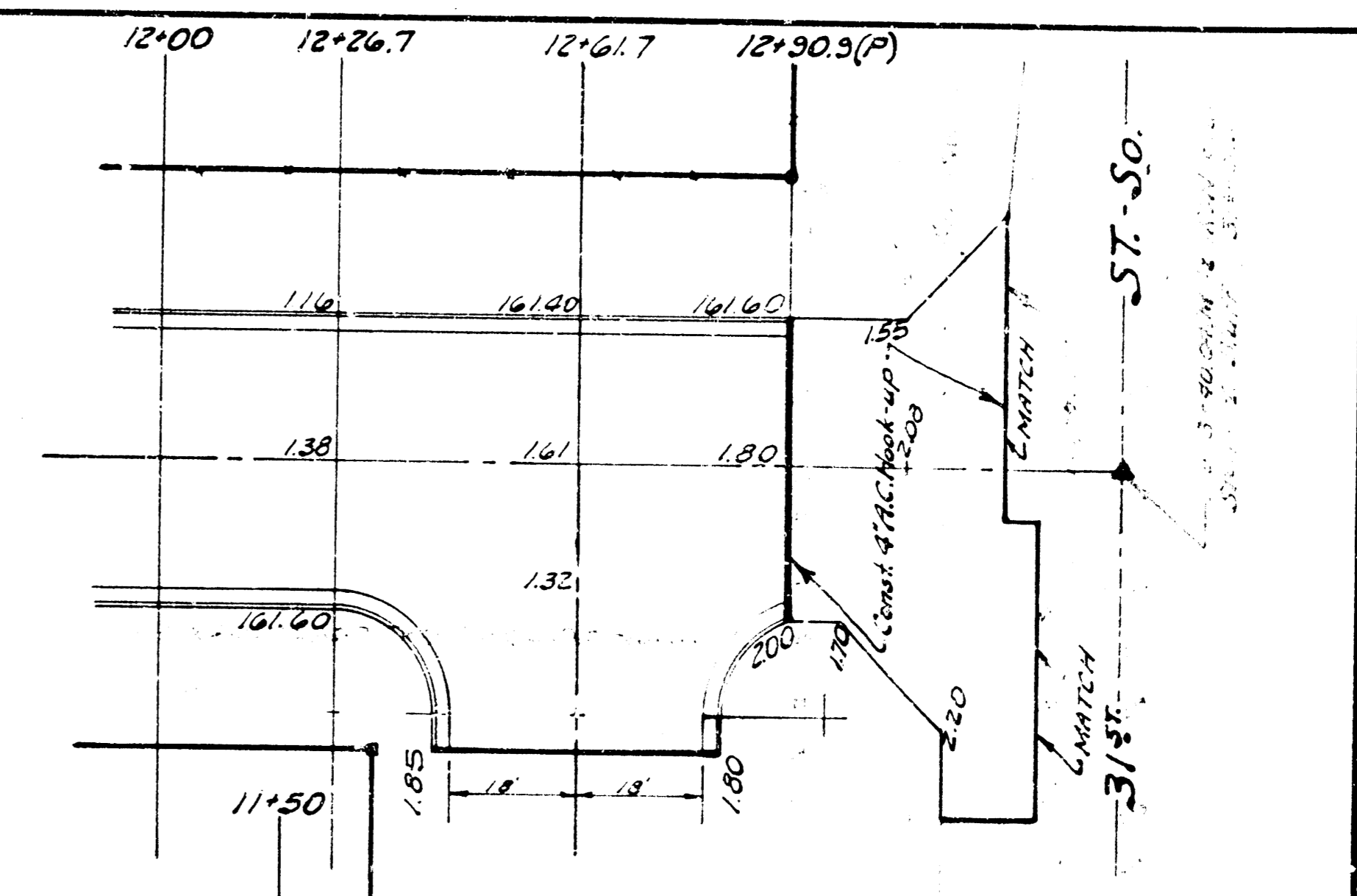
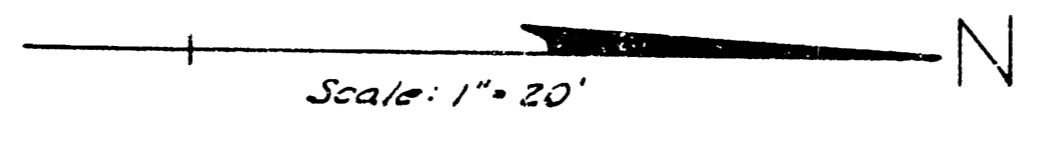
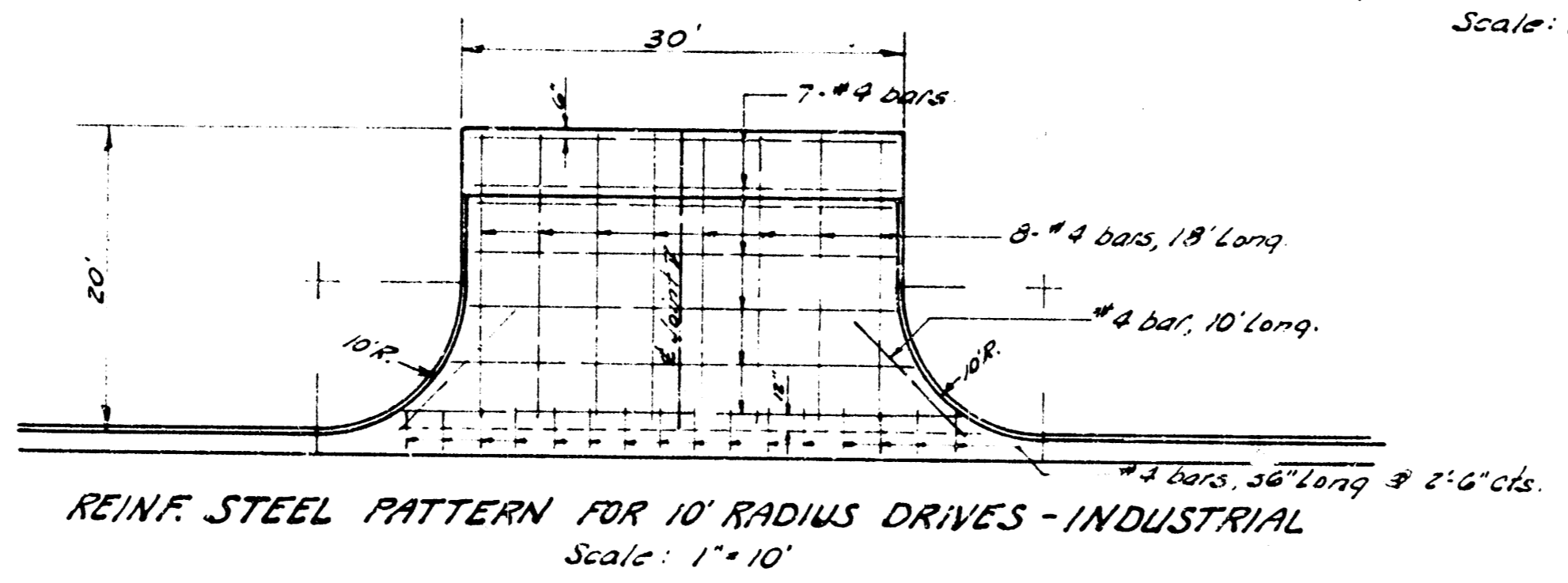
STEEL PATTERN
USE 3/4" dia. BARS EXCEPT WHERE NOTED
NOT TO SCALE



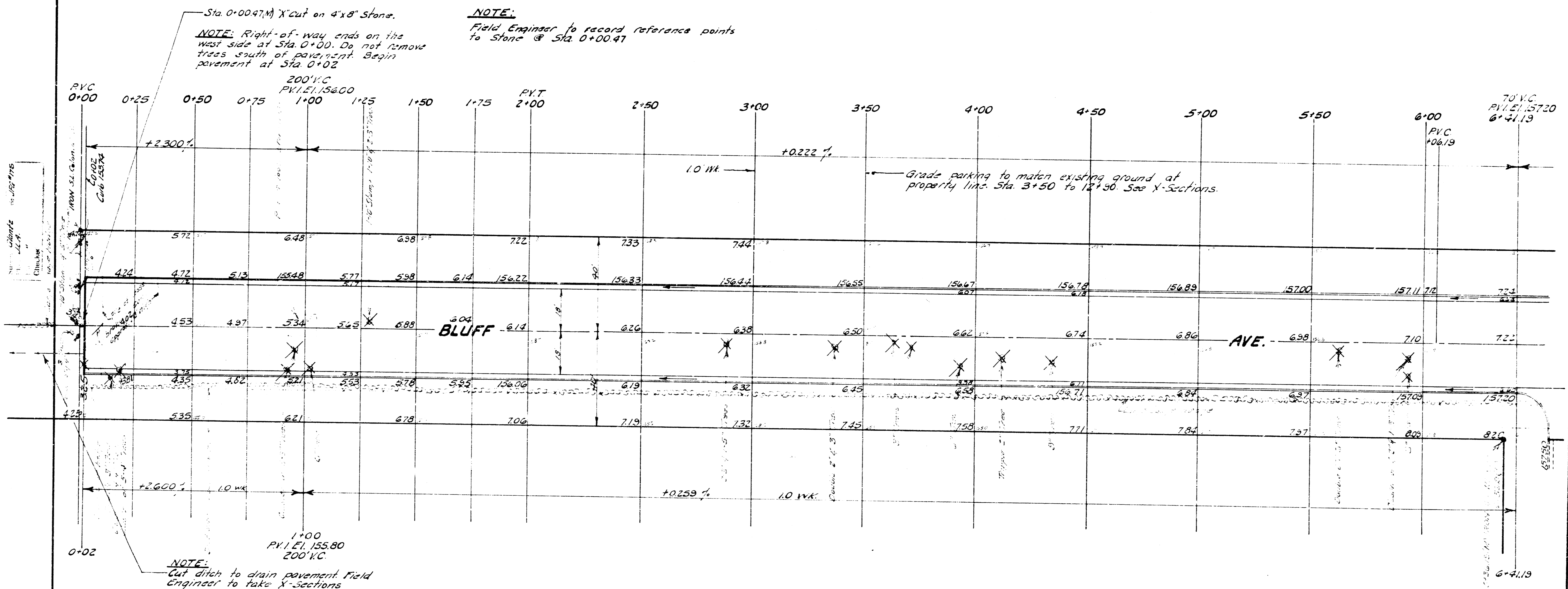
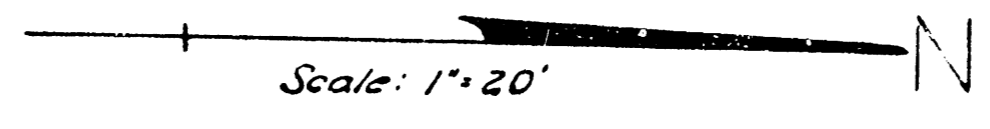
B.M. 16171 10" cut top E. curb Davidson at N.L. 31st Street South.

B.M. 15190 N.E. corner conc porch Ho #3167 Yale.

NOTE:
Use G-Sack Rock Mix in driveways.



B.M. 155.68 RR spike E side large hedge trees & W.L. Bluff & S.L. Colonial Park 2nd Addn. Sta. 0+00



PROPERTY		CITY	
EXCAVATION	COMP. FILL	EXCAVATION	COMP. FILL
4121 Cu Yds	75 Cu Yds	320 Cu Yds	2 Cu Yds
412	7	32	
Totals 4533 Cu Yds.	82 Cu Yds.	352 Cu Yds.	2 Cu Yds.

BLUFF AVE.
 S.L. COLONIAL PARK 2ND ADDN.
 TO S.L. 31ST STREET SOUTH
 36-2-40 ASPH. CONC.
 B.E. SMITH, CITY ENGINEER
 CITY OF WICHITA, KANSAS
 Date: Sept. 1968
 Project No. C.18-33

2/6