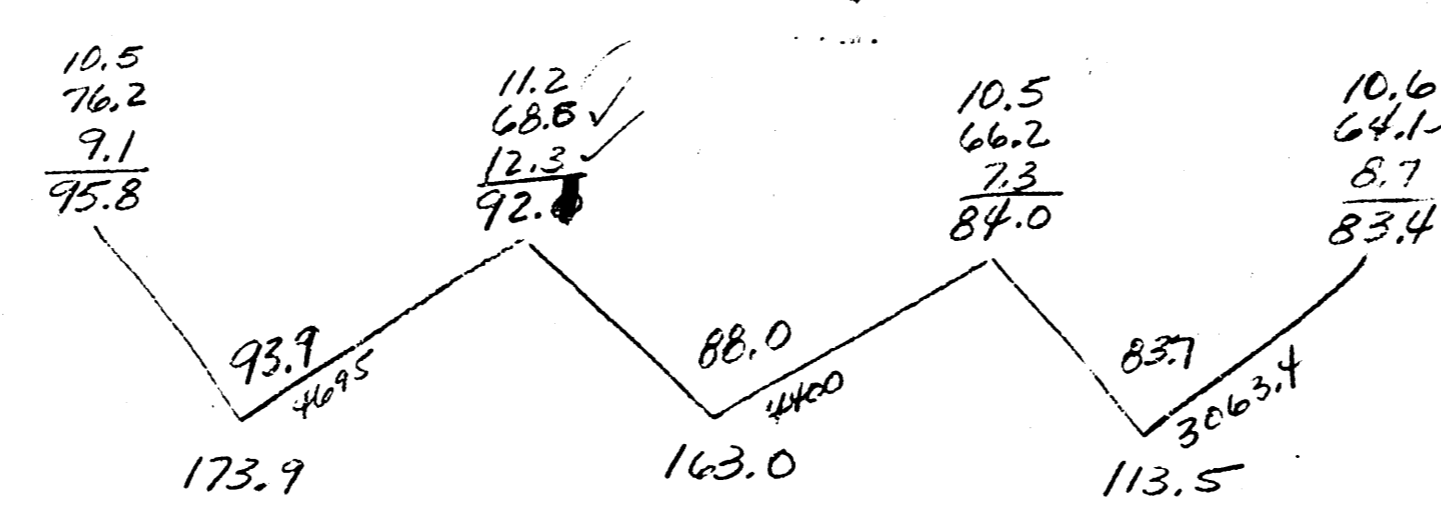
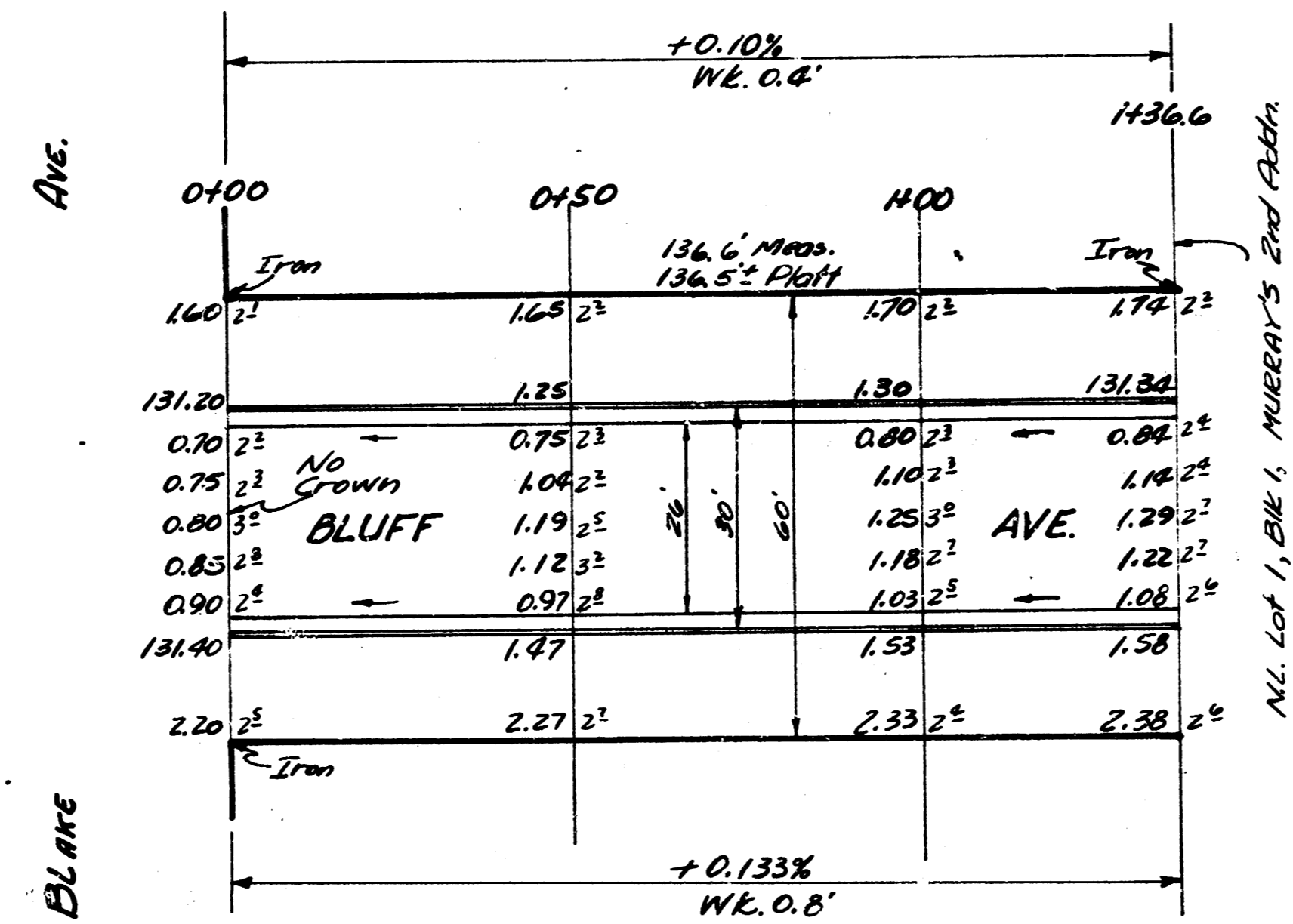


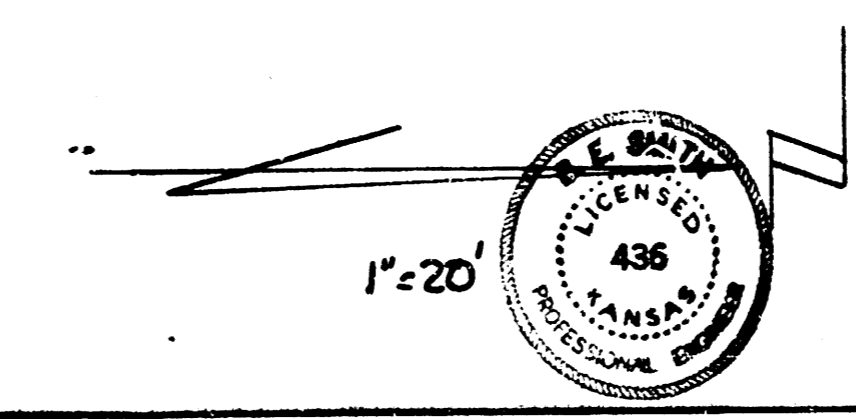
B.M. 134.79 S.W. cor. conc. porch to N.E. cor. Fountain & Blake

Excav.

Prop.	City
173.9	0
163.0	
113.5	
<u>450.4</u>	cu. yds.
+10%	45.0
Total	495.4



PREPARED BY  
 DATE  
 CHECKED BY  
 DATE



BLUFF AVE.  
 N.E. BLAKE to N.E. cor. Dixie & Murray's End  
 26'-2'-30" AC.

CITY OF WICHITA, KANSAS  
 BE. SMITH CITY ENGINEER  
 Jan. 21, 1953 Proj. No. C12-212