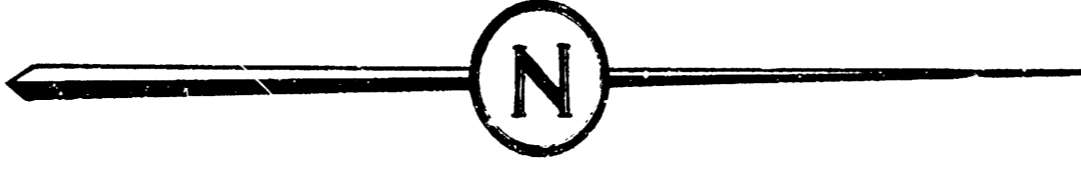
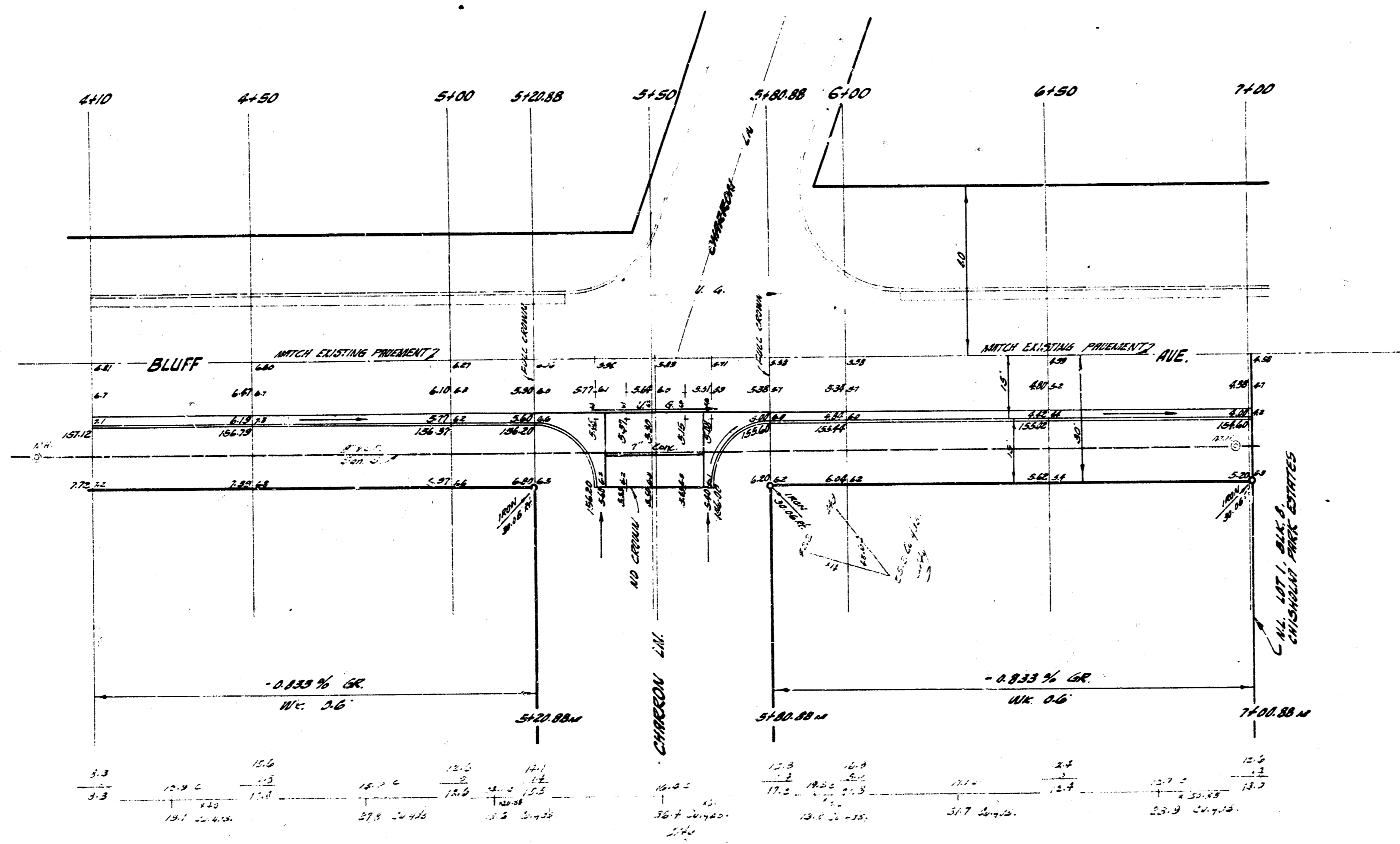


B.M. 16475 TOP OF N.E. 4" VERT. PIPE OF GAS METER @ C.W. BRADY'S SCHOOL W.S. BLUFF S. OF CHARDON L.I.E. STATIONING FROM SOUTH TO NORTH ALONG & BLUFF AVE.



Scale: 1"=20'



Survey done by
 B.E. Smith
 Checked by
 J.E. Smith



DATE	DESCRIPTION	BY
1922-3		B.E.S.
1925-5-5		B.E.S.
1927-2-25		B.E.S.



BLUFF AVE
 100 N. OF N.W. 27TH ST. TO N.W. COR. 1ST & CHARDON
 13²-2²-15² AC.
 CITY OF WICHITA, KANSAS
 B.E. SMITH CITY ENGINEER
 DATE APRIL 1922, PROJECT NO. C18-22