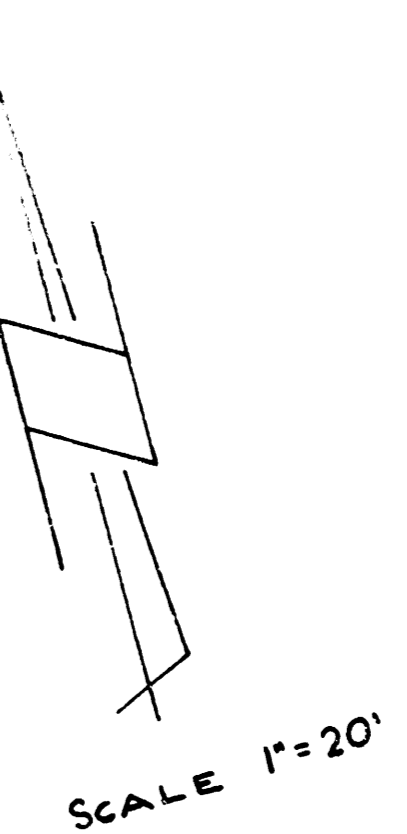
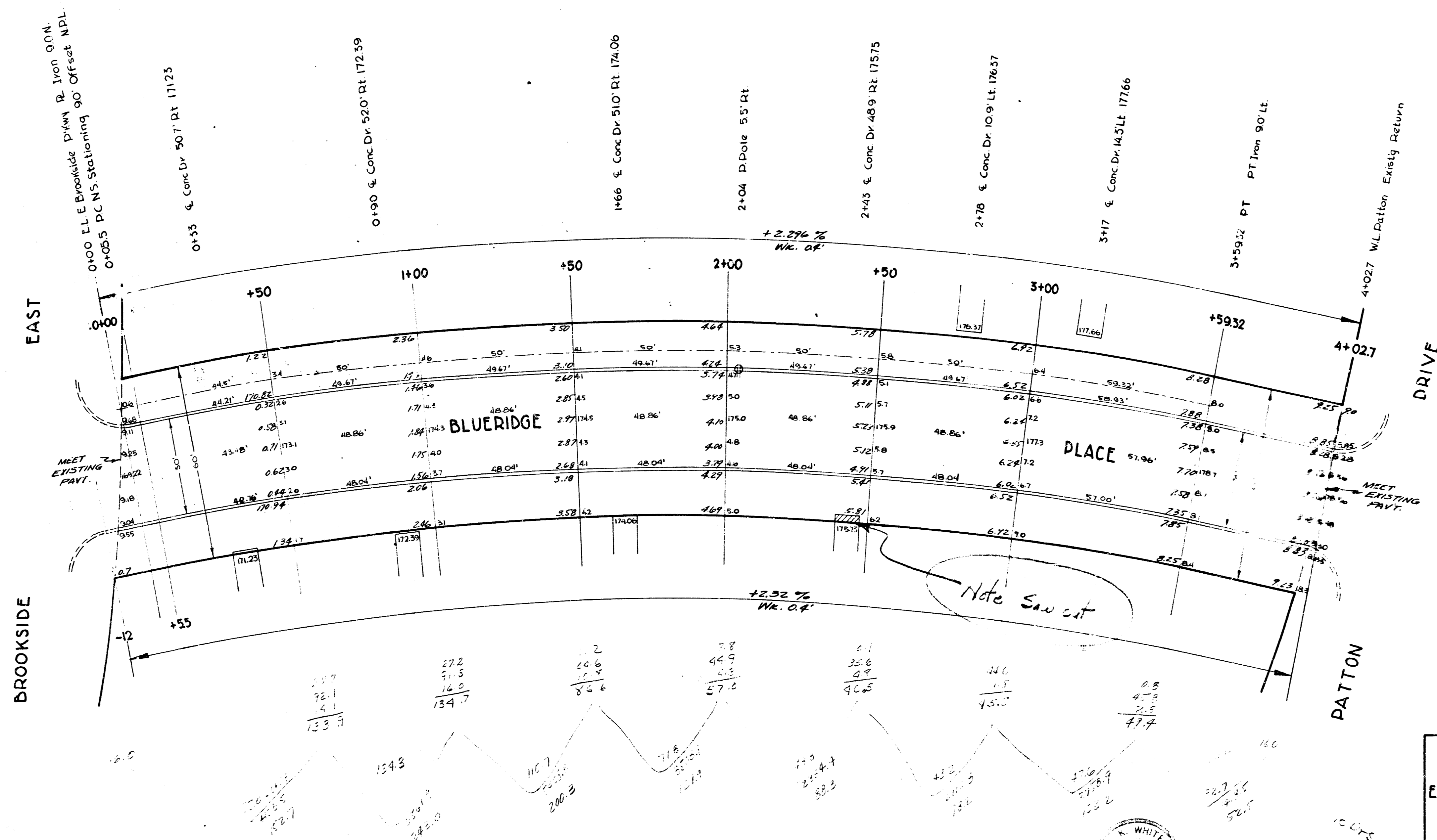


S-5

B.M. 17071 '6" in Globe E. end radius N.E. Cor. Second & W.B.Y. side Pkwy
B.M. 17683 '6" in Globe 10' S. of S. end radius E.S. Patton & S.S. Second



BLUE RIDGE PLACE
 EL. BROOKSIDE PKWY. TO W.L. PATTON DR.
 30' Conc. & Cb
 CITY OF WICHITA, KANSAS
 L.K. WHITE CITY ENGINEER
 SEPT. 1951 PROJ. NO. C11-85

