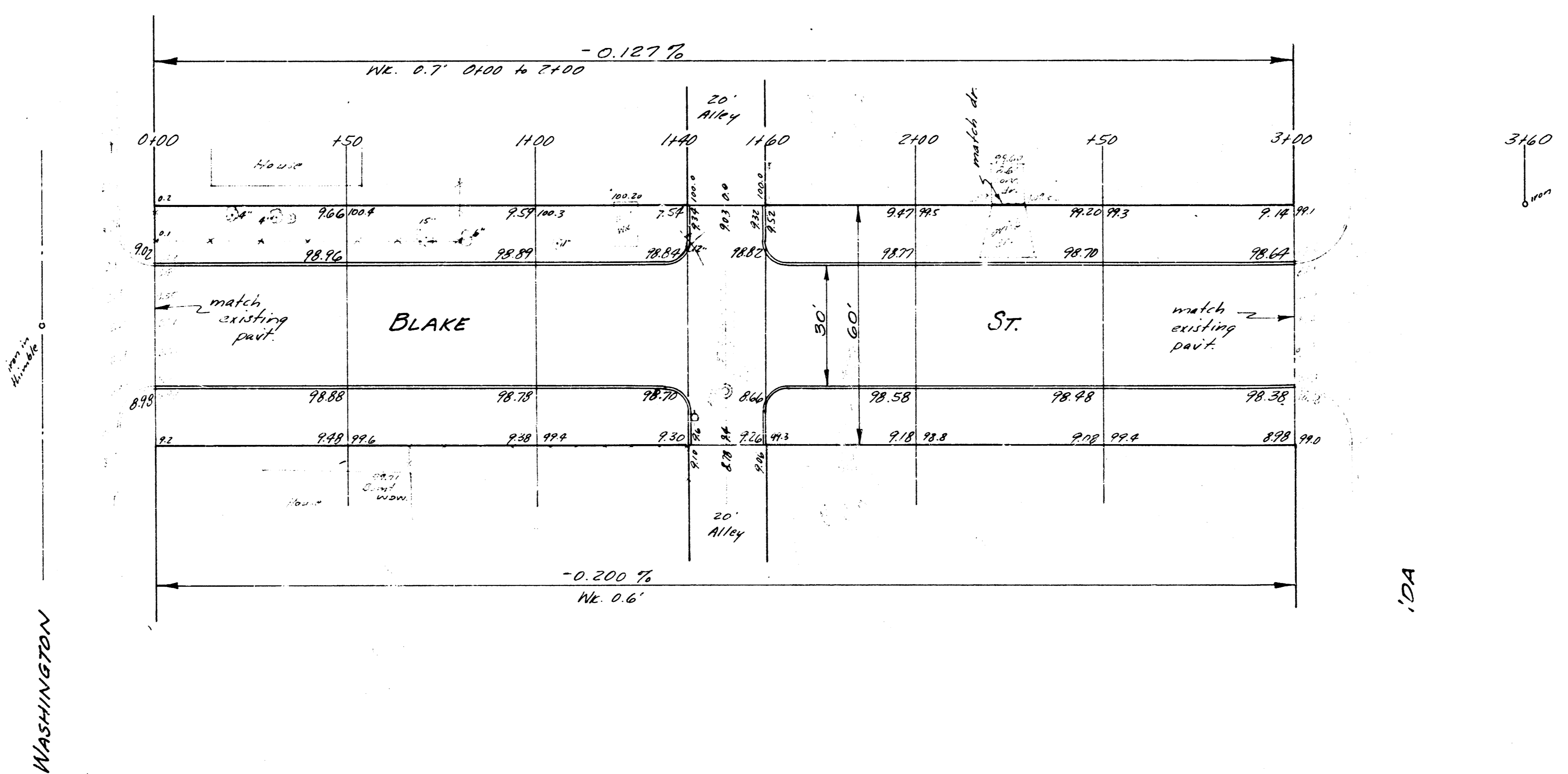


B.M. 4913 'J' in Jones N. end 4' wt. south, S.W. Cor. Blake & Washington  
 B.M. 98.56 'S' in Globe E. End radius, N.S. Blake & E.L. Ida



Plans  
 1/2" = 10'  
 1/4" = 5'  
 1/8" = 2.5'  
 1/16" = 1.25'

WASHINGTON

IDA

BLAKE ST  
 E.L. WASHINGTON TO W.L. IDA  
 30' CONCRETE & CURB  
 CITY OF WICHITA, KANSAS  
 B.E. SMITH CITY ENGINEER  
 JUN 1963 PROJ. C17-33

1/2