

Surveyed by
 Phil ULA
 City Engineer
 1971

Scale: 1" = 20'

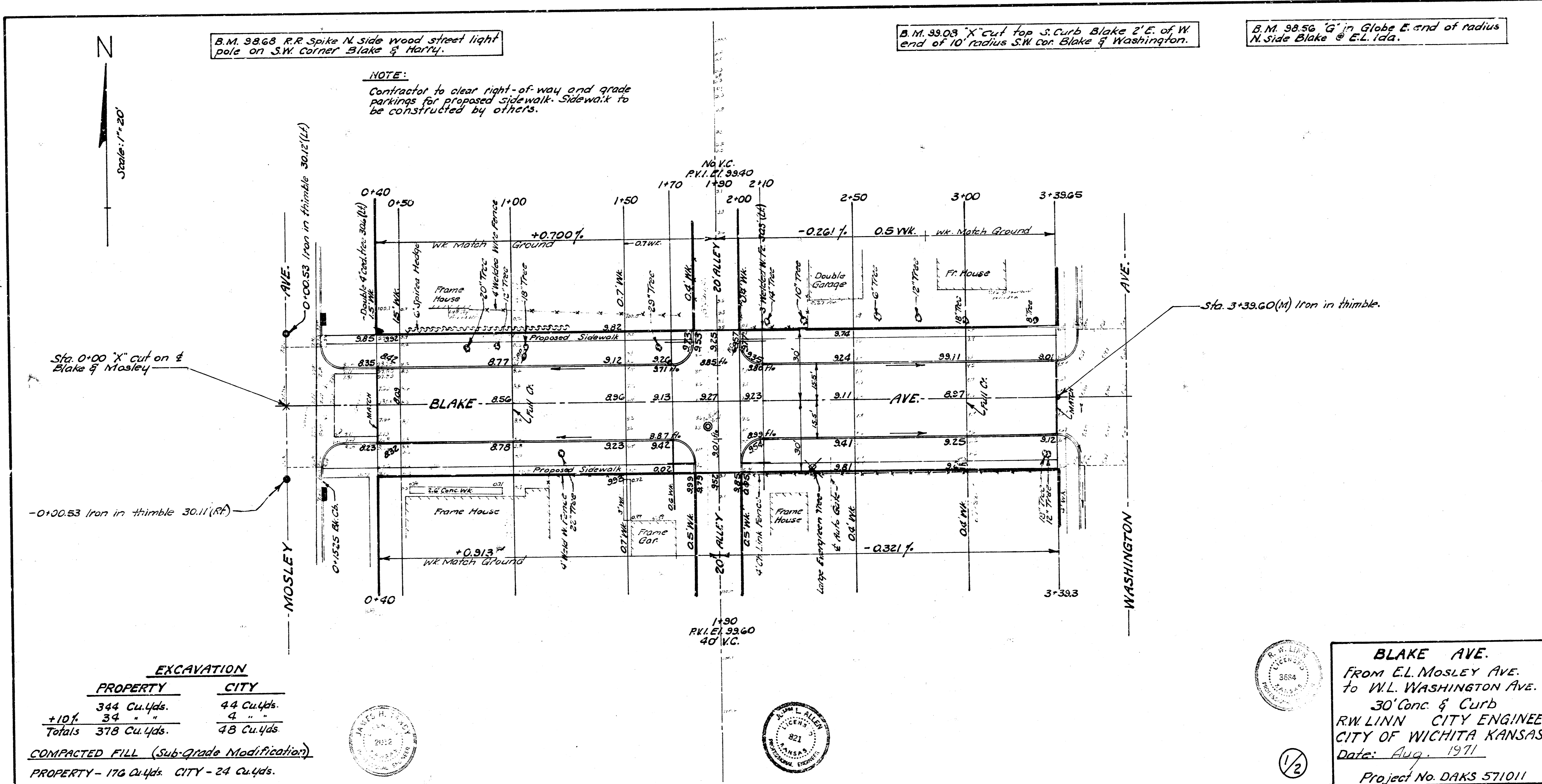
B.M. 98.68 R.R. Spike N. side wood street light pole on S.W. corner Blake & Hartz.

B.M. 99.03 "X" cut top S. curb Blake 2' E. of W. end of 10' radius S.W. cor. Blake & Washington.

B.M. 98.56 "G" in Globe E. end of radius N. side Blake @ E.L. Ida.

NOTE:

Contractor to clear right-of-way and grade parkings for proposed sidewalk. Sidewalk to be constructed by others.



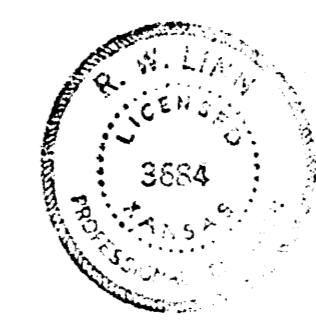
Sta 0+00 "X" cut on E Blake & Mosley

-0+00.53 Iron in thimble 30.11 (RF)

Sta. 3+39.60 (M) Iron in thimble.

EXCAVATION	
PROPERTY	CITY
344 Cu.Yds.	44 Cu.Yds.
+10% 34 "	4 "
Totals 378 Cu.Yds.	48 Cu.Yds.

COMPACTED FILL (Sub-Grade Modification)
 PROPERTY - 176 Cu.Yds. CITY - 24 Cu.Yds.



1/2

BLAKE AVE.
 FROM E.L. MOSLEY AVE.
 TO W.L. WASHINGTON AVE.
 30' CONC. & CURB
 R.W. LINN CITY ENGINEER
 CITY OF WICHITA KANSAS
 Date: Aug. 1971
 Project No. DAKS 571011