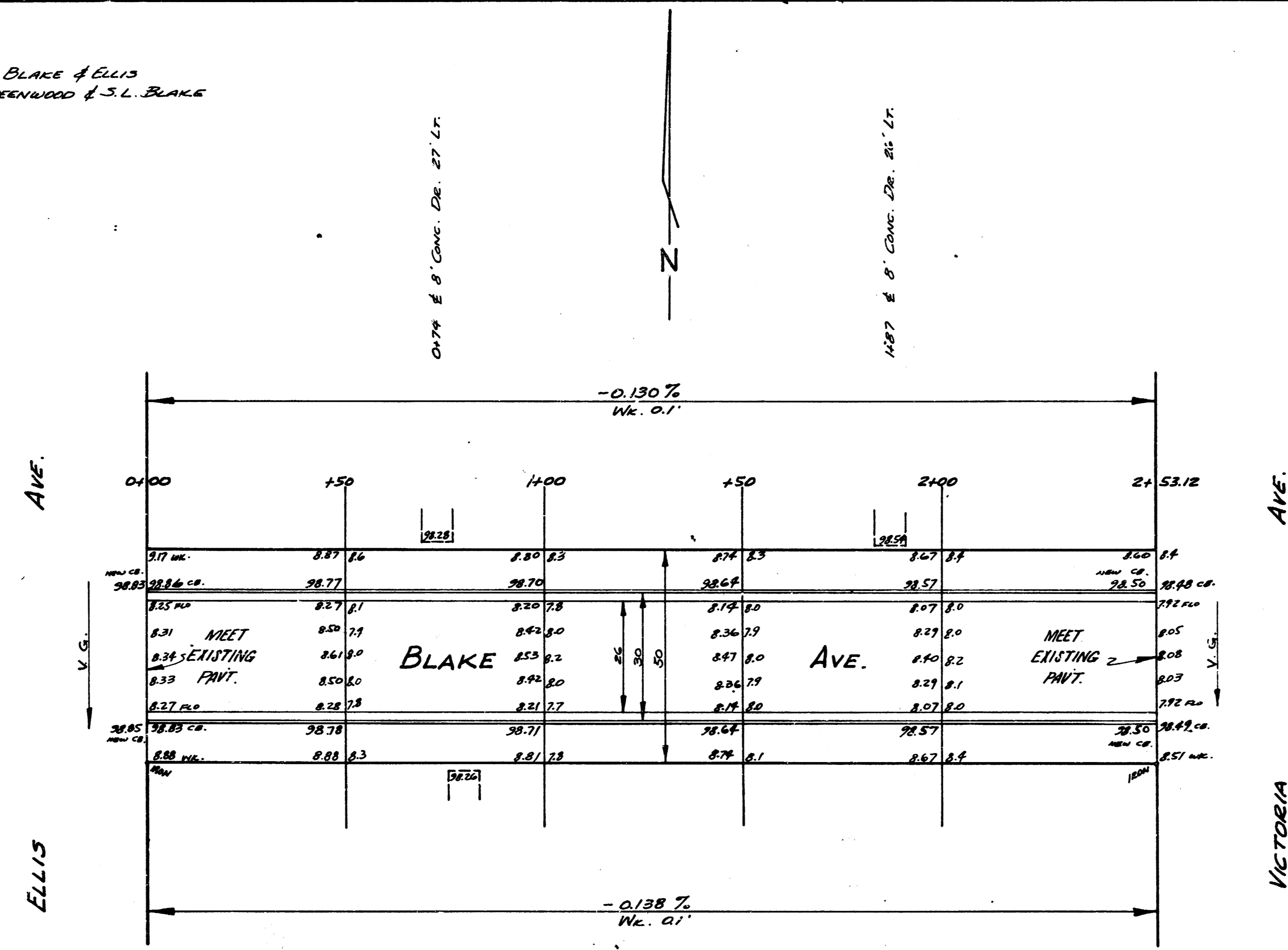


B.M. 38.47 "R" IN RITCHE SEND SE. RET. @ BLAKE & ELLIS
 B.M. 37.90 "G" IN GLOBE N. END W. CO. @ GREENWOOD & S.L. BLAKE



0+00 & 8' CONC. DE. 27' LT.
 18.6
 15.7
 5.5
 17.8
 2.7
 4.2
 2.0
 7.8
 5.6
 4.3
 11.1
 12.6
 4.5
 2.5
 17.6
 15.6
 5.5
 30.7
 18.6



BLAKE
 E.L. ELLIS TO W.L. VICTORIA
 26-2-30 A.C.
 CITY OF WICHITA, KANSAS
 L.K. WHITE - CITY ENGINEER
 JULY 1952 PROJ. C12-63