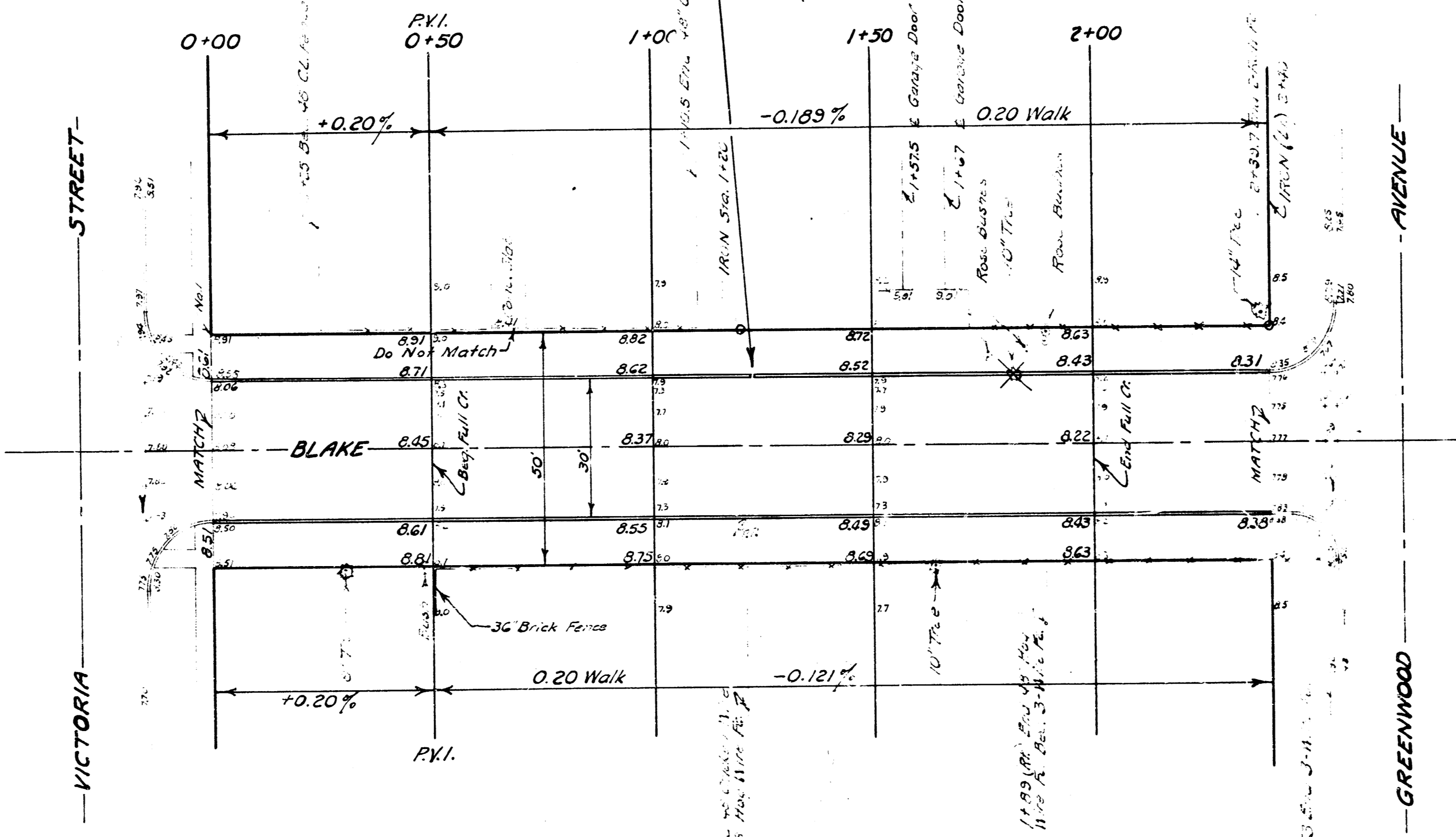
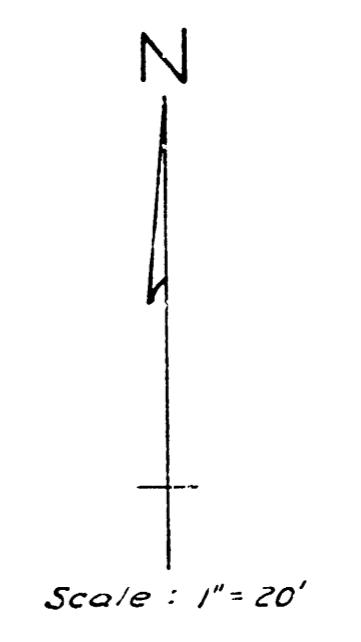


B.M. 100.55 S.E. cor. conc. patch  
House # 2303 S.W. cor. Blake & Victoria

NOTE: Sta. 1+22 (lt) Leave an  
8" Space in Reinf. Integral Curb.



Excavation	Compacted Fill
70 Cu. Yds.	8.1 Cu. Yds.
+10% 7 - "	0.8 - "
77 - "	8.9 - "

**BLAKE STREET**  
E.L.VICTORIA TO W.L.GREENWOOD  
6" Concrete Integral Curb  
CITY OF WICHITA, KANSAS  
B.E. SMITH, CITY ENGINEER  
APRIL 1941  
Proj. No. C10-116

0.85  
1.12  
1.12

