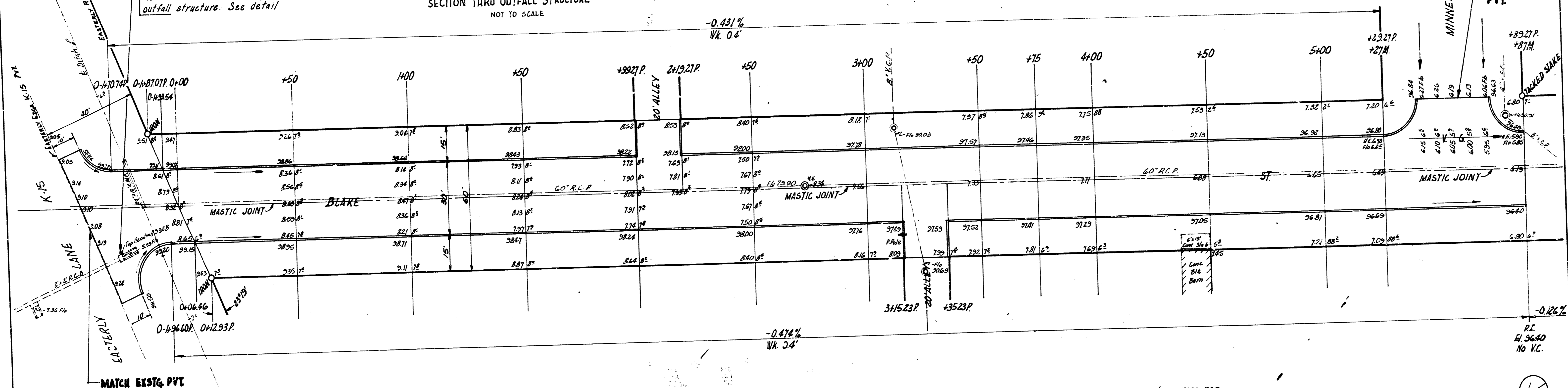
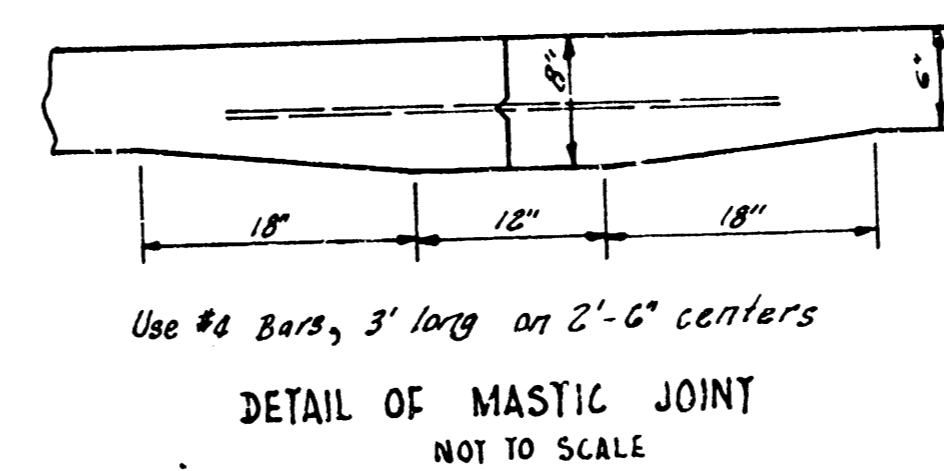
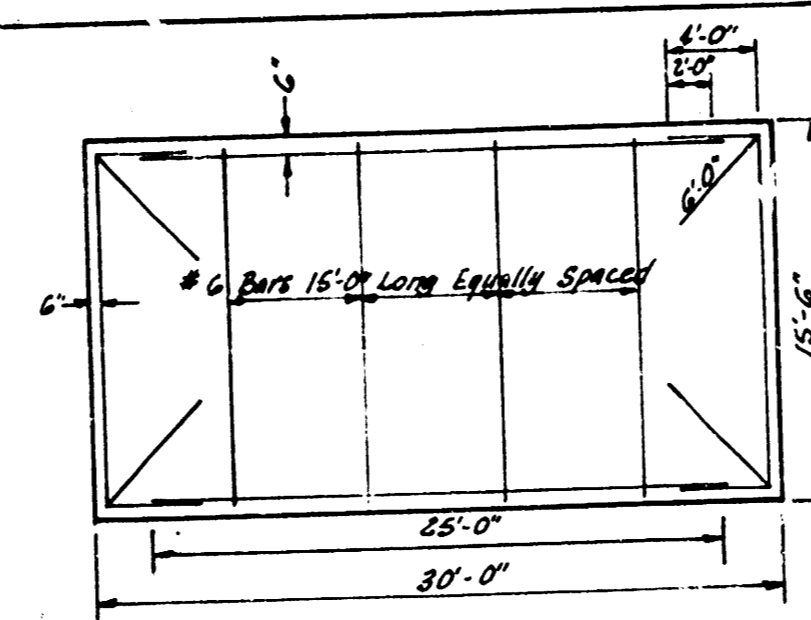
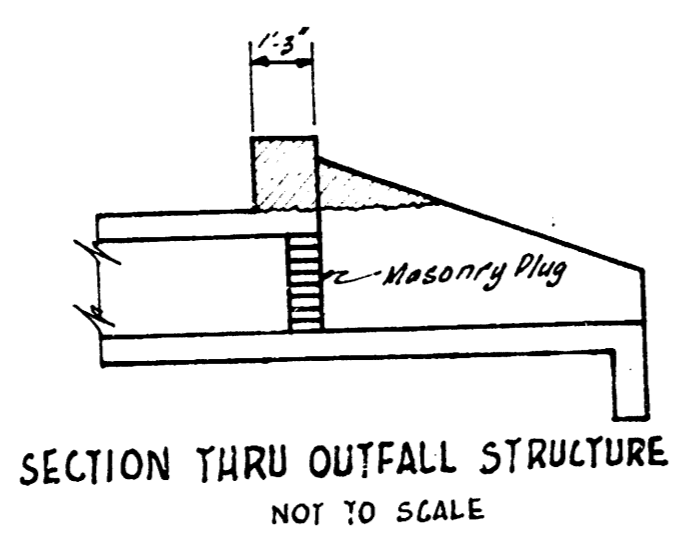


B.M. 9932 "M" in Mueller Top F.P. N.W. cor. Minnesota & Stafford.
 B.M. 9664 "P" in P.K.S. top E. cb. Minnesota N.L. Blake
 B.M. 9934 Step B.M. S.S. Pole @ N.E. cor. S.E. Dr. & Blake

Chaining E. on & Blake

NOTE:
 Remove headwall and plug
 outfall structure. See detail



NOTE TO FIELD ENGINEER & CONTRACTOR
 Re-cross section to determine amount of
 loose fill to be removed & replaced with
 sand fill in old creek bed between
 Sta 4+50 & Sta 5+39, appr.

1/2

BLAKE ST.
 E.L. SOUTHEAST BLVD. - E.L. MINNESOTA
 30' CONC. & CB.
 CITY OF WICHITA, KANS.
 B.E. SMITH CITY ENGINEER
 SEPT. 1955 PROJ. NO. C14-66

