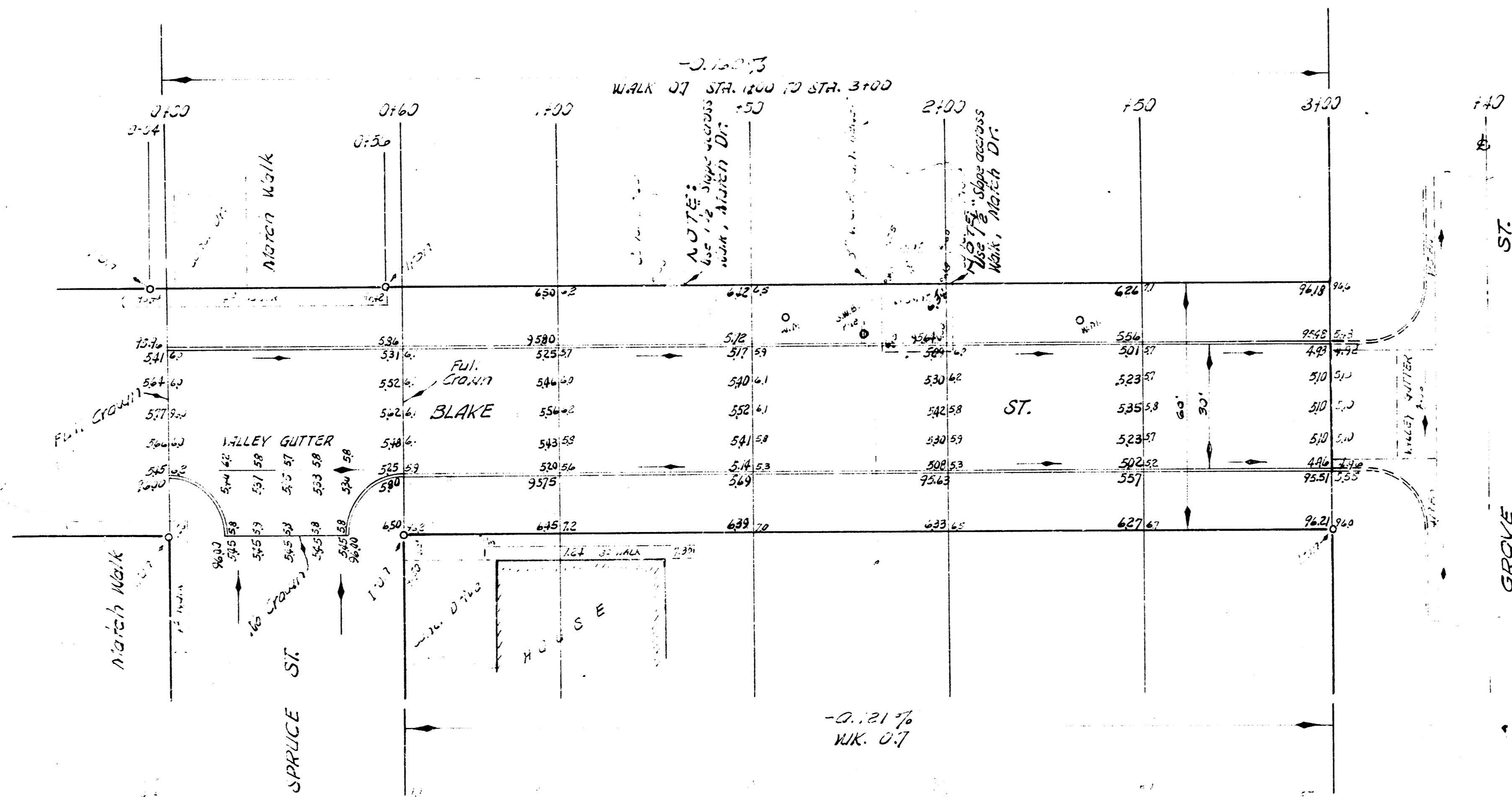


B.M. 95.33 Pin S. P.K. S. E. of Grove & Blake.
 B.M. 99.06 NW corner Pine north NW Standard & Grove.
 3.55 14 8

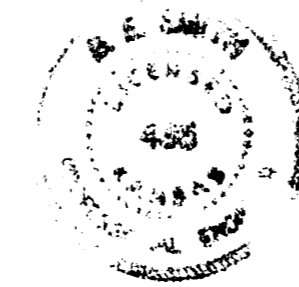
SCALE 1" = 20'



C.A. MC
 C. MC
 C. MC

EXCAVATION

CITY	PROP.
51.2	358.5
51.1	35.9
56.3	3944 Cu. Yds.



BLAKE ST.
 WL SPRUCE TO WL GROVE
 30' CONC. & CB.
 CITY OF WICHITA, KANSAS
 B. E. SMITH CITY ENGINEER
 OCT. 1958 PROJ. NO. C13-179