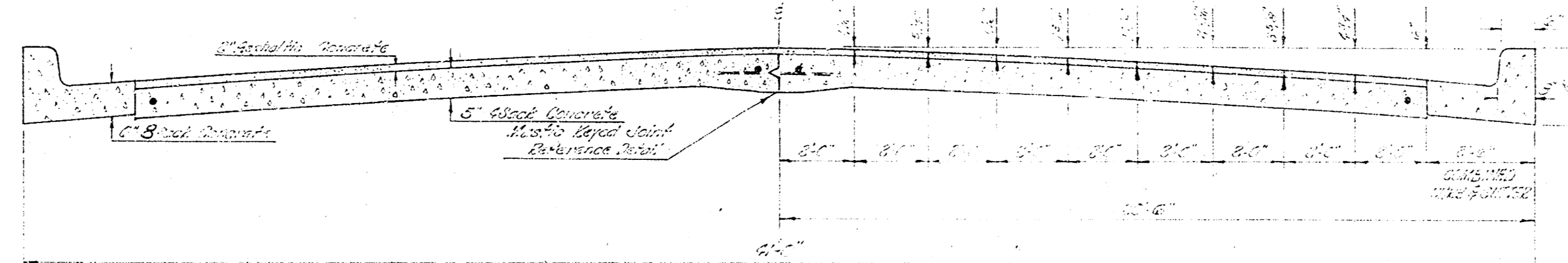
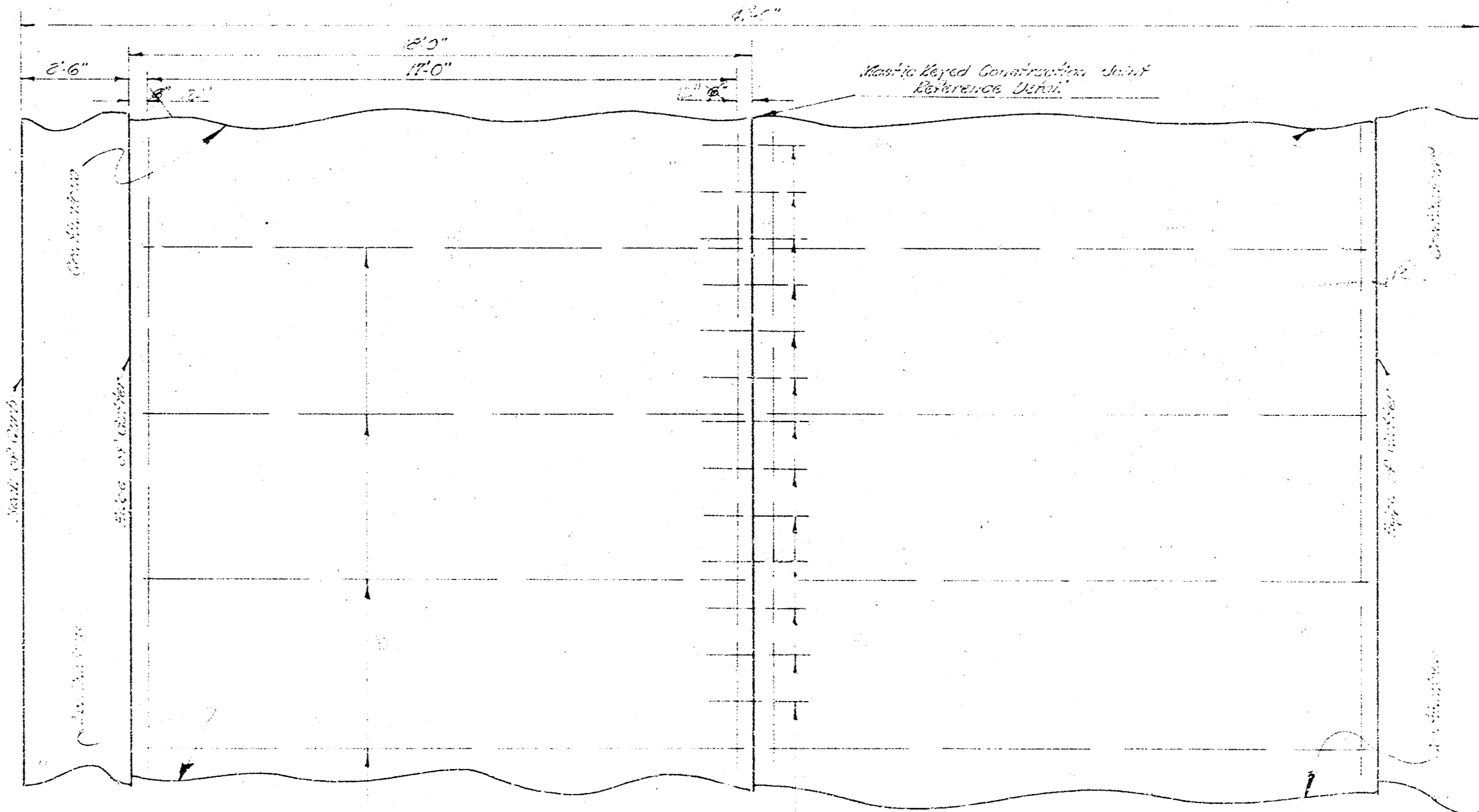


CENTRAL AVENUE

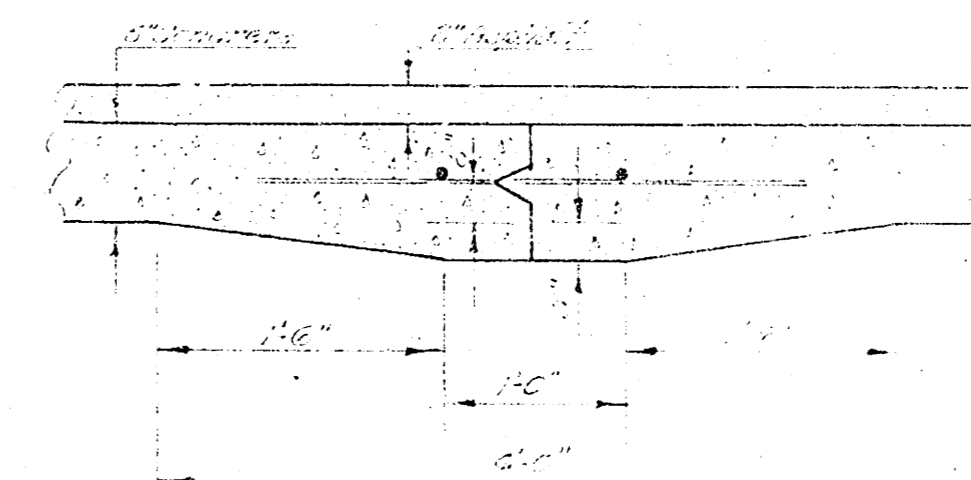
FROM 300' W. OF W.L. OF SHERIDAN AVE. TO MC LEAN BLVD.
CI3-114
CI3-115



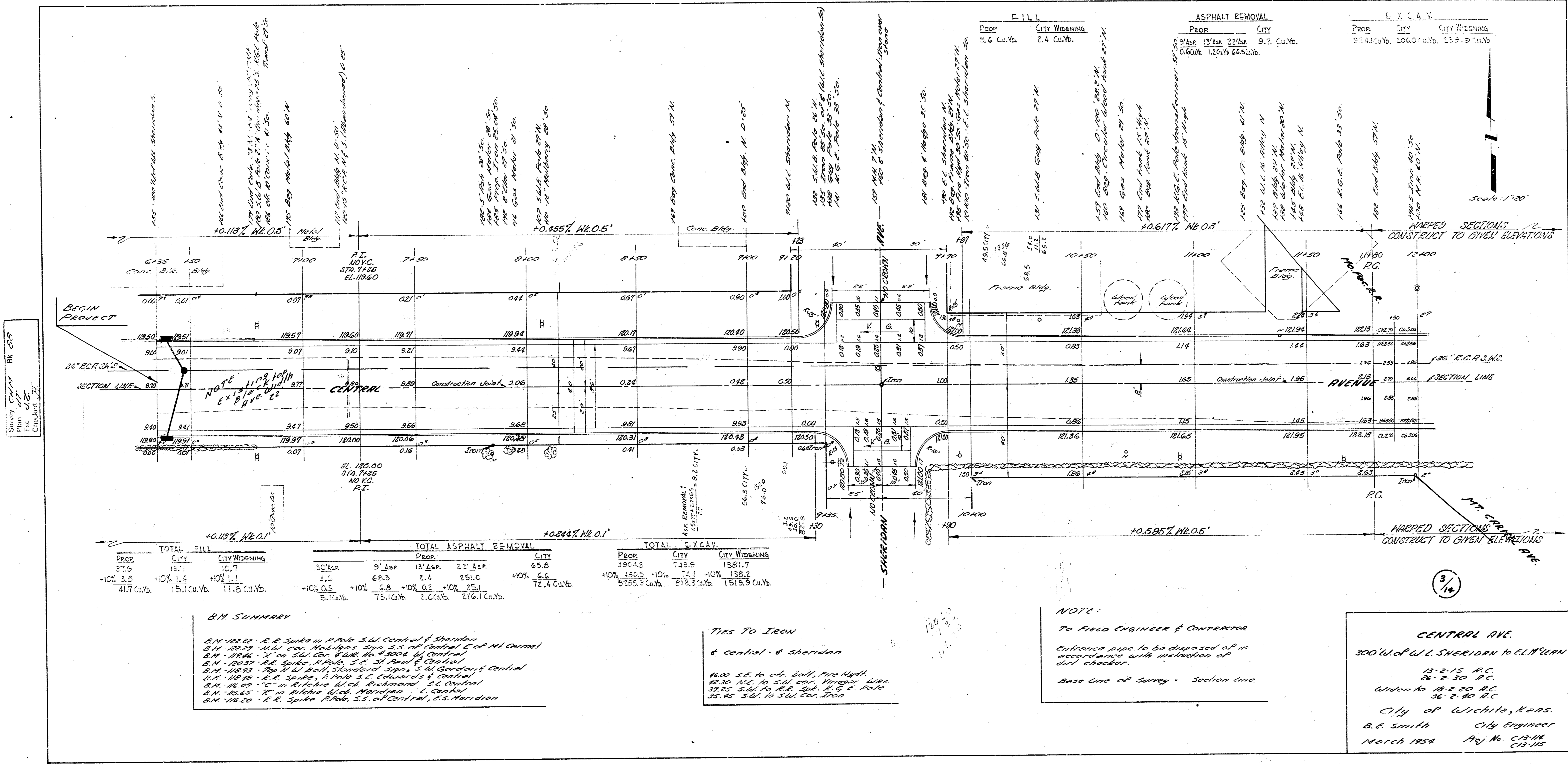
TYPICAL SECTION
NOT TO SCALE



STEEL PATTERN
USE 3/4" BARS EXCEPT WHERE NOTED
NOT TO SCALE



DETAIL OF MASTIC KEYED JOINT
NOT TO SCALE



FILL			ASPHALT REMOVAL			E. X. C. A. V.		
PEOP.	CITY	CITY WIDENING	PEOP.	CITY	CITY WIDENING	PEOP.	CITY	CITY WIDENING
5.6 Cu.Yb.		2.4 Cu.Yb.	9.4 Cu.Yb.	13.7 Cu.Yb.	22.4 Cu.Yb.	9.2 Cu.Yb.		
			0.6 Cu.Yb.	1.2 Cu.Yb.	6.4 Cu.Yb.	9.2 Cu.Yb.	10.0 Cu.Yb.	11.9 Cu.Yb.

TOTAL FILL			TOTAL ASPHALT REMOVAL						TOTAL EXCAV.			
PEOP.	CITY	CITY WIDENING	PEOP.	9' ASP.	15' ASP.	22' ASP.	CITY	PEOP.	CITY	CITY WIDENING		
37.5	13.7	10.7	1.0	6.3	2.4	251.0	65.0	10%	280.5	7.7	10%	138.2
41.7 Cu.Yb.	15.1 Cu.Yb.	11.8 Cu.Yb.	5.1 Cu.Yb.	75.1 Cu.Yb.	2.6 Cu.Yb.	216.1 Cu.Yb.	72.4 Cu.Yb.	5255.3 Cu.Yb.	81% 3 Cu.Yb.	1519.9 Cu.Yb.		

B.M. SUMMARY

B.M. 102.22 - E. Spike in P. Hole S.W. Corner of Sheridan
 B.M. 102.27 - N.W. cor. Main & Spr. S.S. of Central E. of N.W. Corner
 B.M. 102.46 - " " on S.W. cor. Main & Spr. S.S. of Central
 B.M. 102.57 - E. Spike in P. Hole S.E. of Main & Central
 B.M. 102.93 - Top of N.W. Bolt, Standard Sign S.W. Corner of Central
 B.M. 102.98 - E. Spike in P. Hole S.E. of Main & Central
 B.M. 103.09 - " " in B. Hole S.W. of Main & Central
 B.M. 103.65 - " " in B. Hole S.W. of Main & Central
 B.M. 104.00 - E. Spike in P. Hole S.S. of Central, S.S. of Sheridan

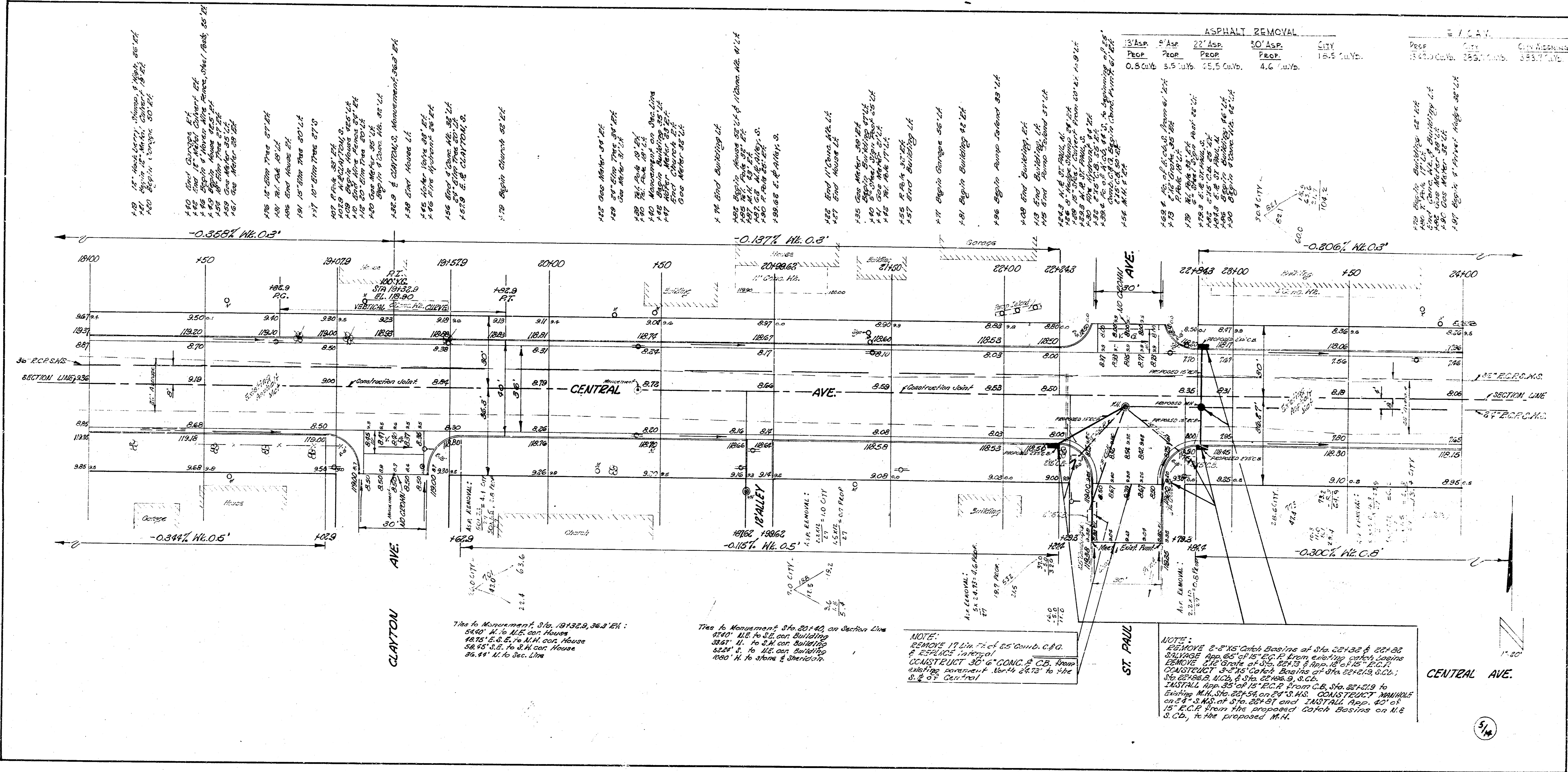
Ties To Iron
 to Central & Sheridan
 100 S.E. to ch. Bolt, Fire Hydr.
 10.30 N.E. to S.W. cor. Vinegar Bldg.
 37.25 S.W. to P.H. Spt. S.W. E. Pole
 25.75 S.W. to S.W. cor. Main

NOTE:
 To Field Engineer & Contractor
 Balance pipe to be disposed of in accordance with instruction of dirt checker.
 Base Line of Survey - Section line

CENTRAL AVE.
 300' W. of W.L. SHERIDAN to E.L. ILLIEN
 13-2-15 P.C.
 26-2-30 P.C.
 Under No. 10, 2-20 P.C.
 36-2-30 P.C.
 City of Wichita, Kans.
 B.E. Smith City Engineer
 March 1924 Proj. No. C13-104
 C13-115

Scale 1"=20'

3/14



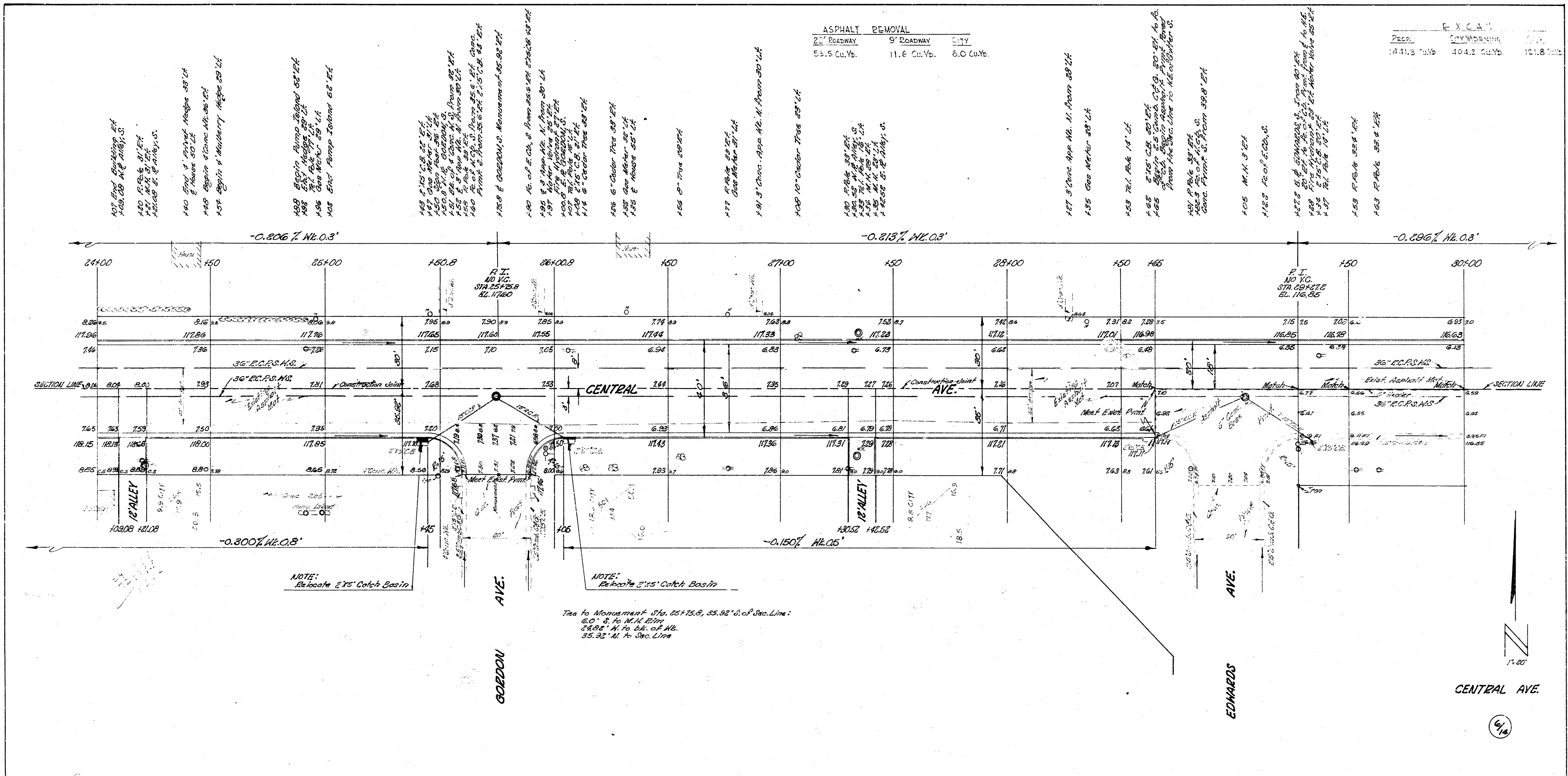
ASPHALT REMOVAL				CITY	
12' Asp	18' Asp	24' Asp	30' Asp	16.5 Cu Yd.	18.5 Cu Yd.
Prep	Prep	Prep	Prep		
0.5 Cu Yd.	3.5 Cu Yd.	7.5 Cu Yd.	4.6 Cu Yd.		

Tree to Monument, Sta. 19+82.9, 36.3' DI:
 54'0" N. to N.E. cor. House
 48'0" E. to E. to N.W. cor. House
 58'0" S. to S.W. cor. House
 36.3' N. to Sec. Line

Tree to Monument, Sta. 20+42, on Section Line
 47'0" N. to N.E. cor. Building
 33'0" E. to E. to N.W. cor. Building
 33'0" S. to S.W. cor. Building
 48'0" N. to Stone & Ironing

NOTE:
 REMOVE 17' DIA. 7' of 65' CONC. C.B. &
 REPLACE INTERIOR
 CONSTRUCT 30" 6" CONC. C.B. FROM
 EXISTING CONCREMENT. Mark 4' x 12' to Sta.
 3+25' Central

NOTE:
 REMOVE 8' x 15' Catch Basins at Sta. 20+32 & 20+36
 SALVAGE App. 65' of 15" E.C.P. from existing catch basins
 REMOVE 212' Grade of Sta. 20+33 & App. 12' of 15" E.C.P.
 CONSTRUCT 30" 6" CONC. C.B. Basins at Sta. 20+33, 20+36;
 15" 24" DIA. M.C.D. & Sta. 20+32, 20+36, S.C.D.
 INSTALL App. 33' of 15" E.C.P. from C.B. No. 20+29 to
 existing M.C.D. 20+32 on 24" S.W. CONSTRUCT MANHOLE
 on S.W. S.N.S. of Sta. 20+31 and INSTALL App. 40' of
 15" E.C.P. from the proposed Catch Basins on N.E.
 S.C.D. to the proposed M.C.



142 12\"/>

143 12\"/>

144 12\"/>

145 12\"/>

146 12\"/>

147 12\"/>

148 12\"/>

149 12\"/>

150 12\"/>

151 12\"/>

152 12\"/>

153 12\"/>

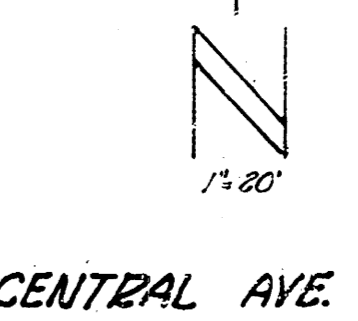
ASPHALT REMOVAL		
2 1/2\"/>		
55.5 Cu.Yd.	11.6 Cu.Yd.	6.0 Cu.Yd.

E.X.C.A.		
PREP.	CITY WIDENING	TOTAL
141.5 Cu.Yd.	404.2 Cu.Yd.	545.7 Cu.Yd.

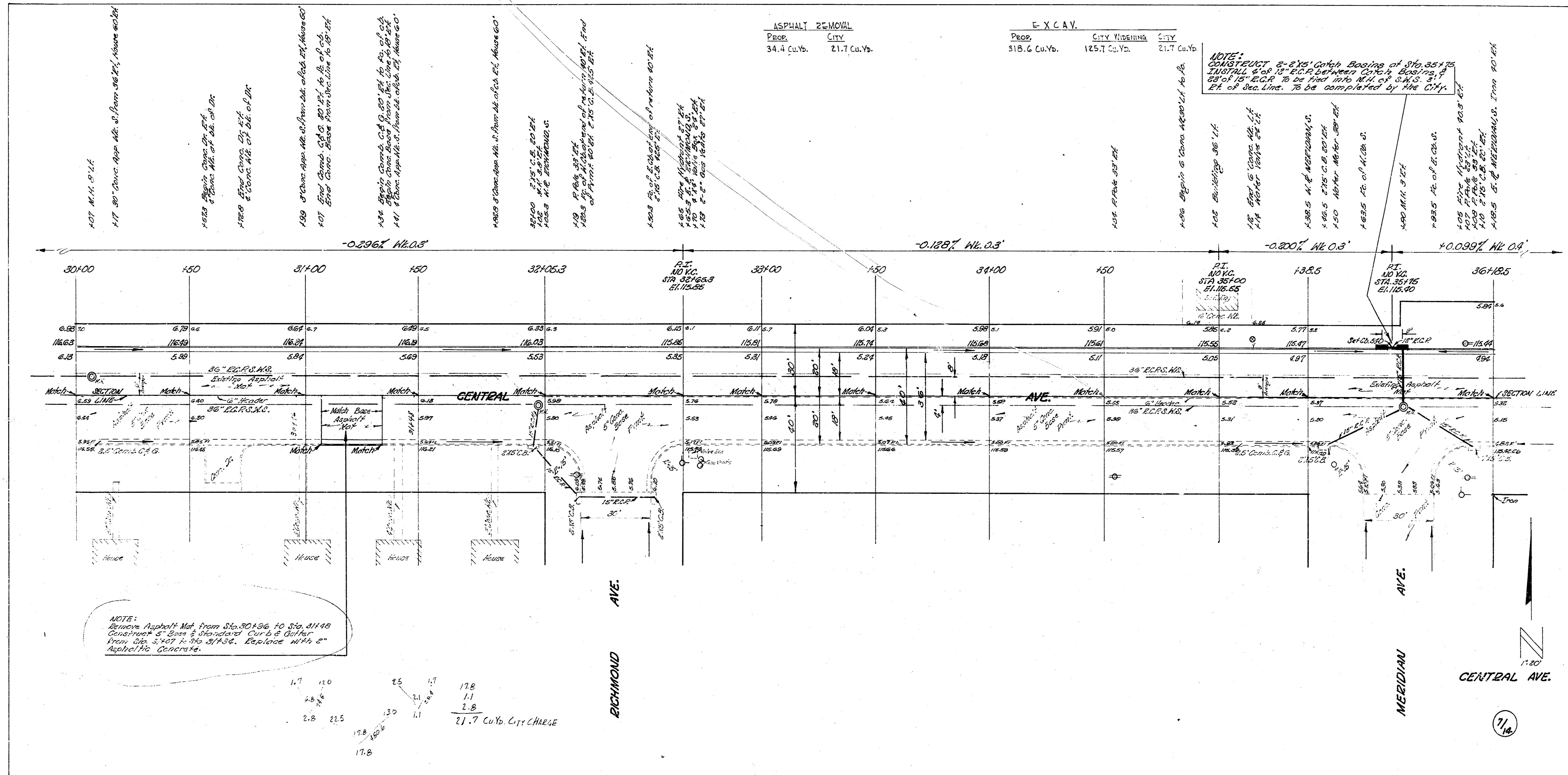
NOTE: Relocate 24\"/>

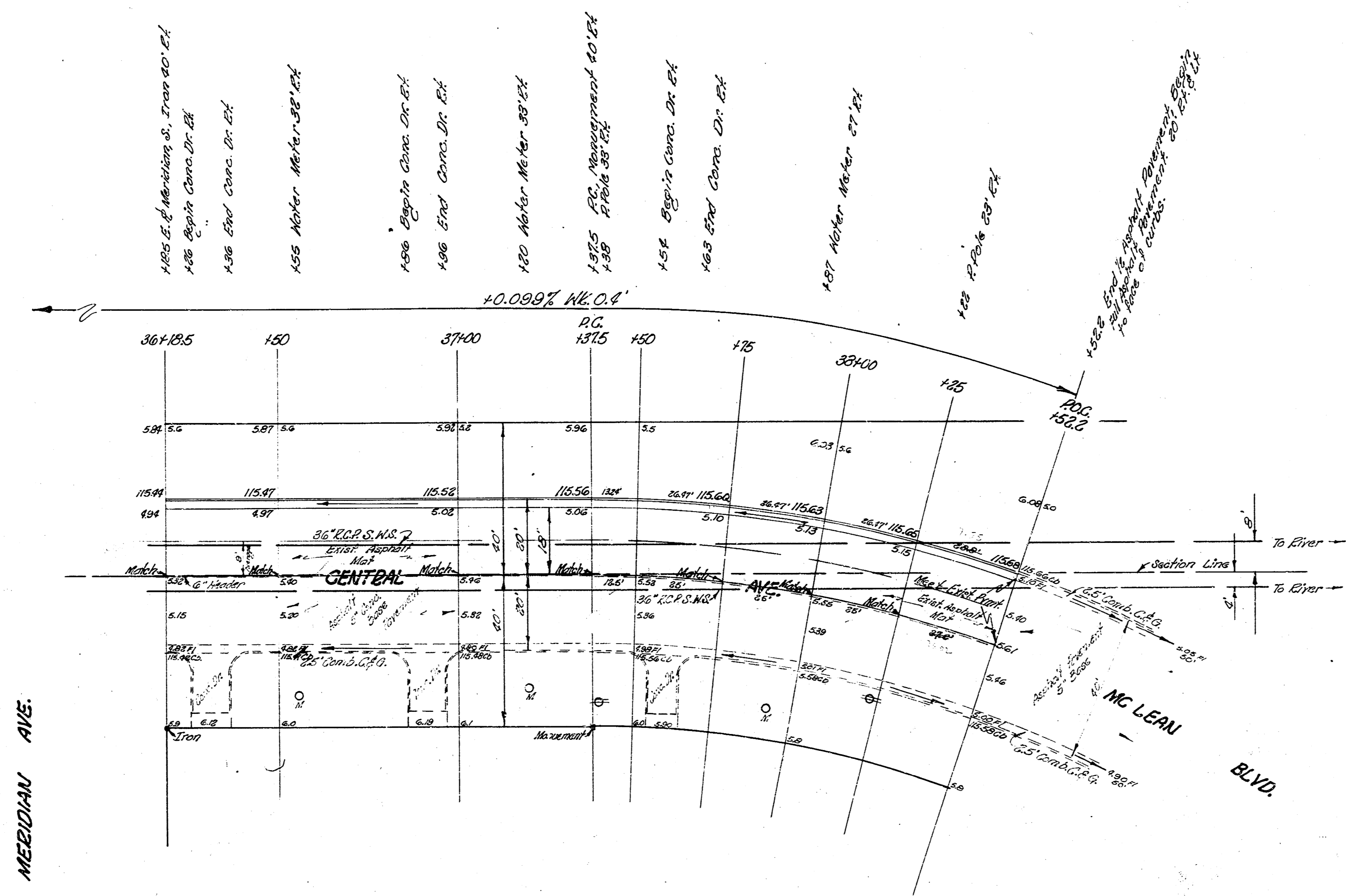
NOTE: Relocate 24\"/>

Tie to Monument Sta. 25+75.5, 35.32' S. of Sec. Line:
 60' S. to Mark 25+
 24.92' N. to Ck. of Rd.
 35.32' N. to Sec. Line



CENTRAL AVE.



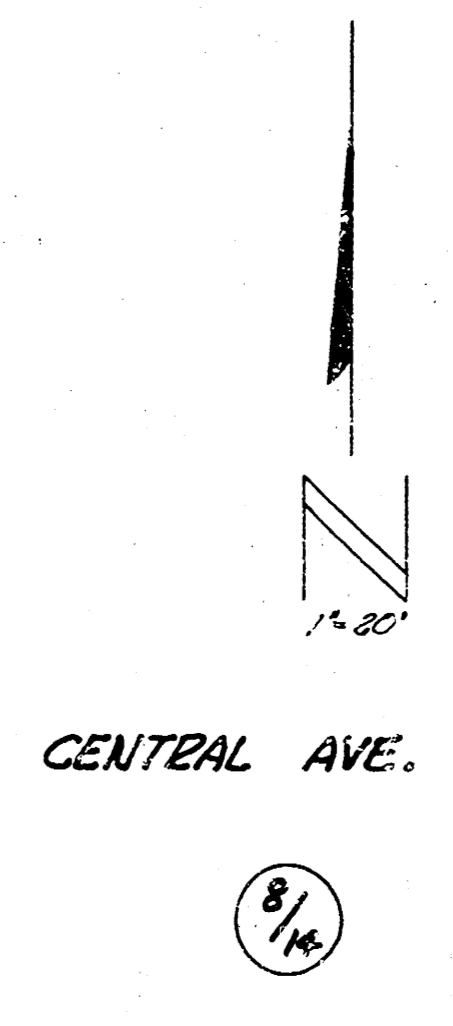


ASPHALT REMOVAL
 PROP.
 15.0 Cu.Yd.

E. C. A. S.
 2500
 60.7 Cu.Yd. 140.0 Cu.Yd.

CURVE DATA FROM STA 37185 TO STA 38152.2
 Set Pointed on North Edge of Existing Pavement
 P=3.40

STATION ON N. EDGE OF EXIST. PAVT.	CHORD LENGTH FOR N. EDGE OF EXIST. PAVT.	CHORD LENGTH FOR S. EDGE OF EXIST. PAVT.	DEFLECT. ANGLE	TOTAL DEFLECTION
37185	12.0'	13.46'	1°08'	1°8'
150	25'	26.91'	2°07'	3°15'
175	25'	26.91'	2°06'	5°21'
38100	25'	26.91'	2°06'	7°27'
185	25'	26.91'	2°06'	9°33'
152.2	27.2'	28.89'	2°15'	11°48'



8/14